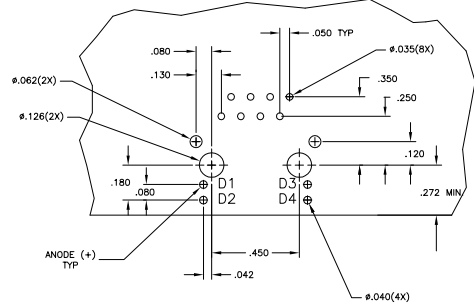
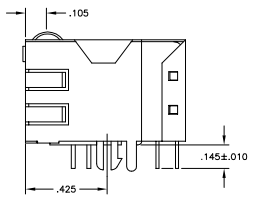
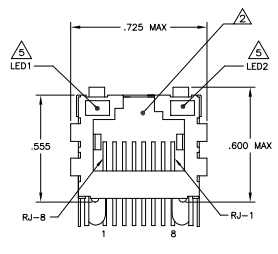
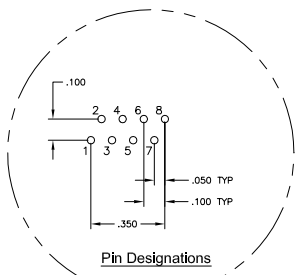
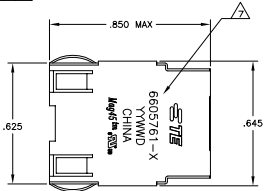


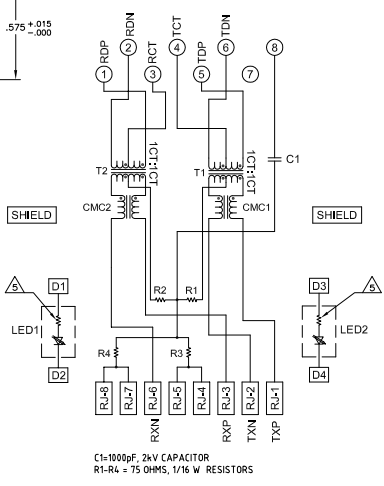
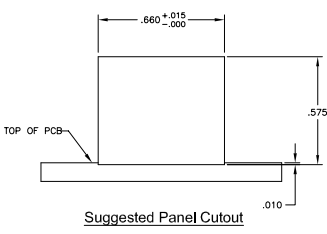
THIS DRAWING IS UNCLASSIFIED
 RECLASSIFIED FOR PROTECTION
 © 2008 TE Connectivity Corporation ALL RIGHTS RESERVED

REV	DATE	DESCRIPTION	BY	CHK	APP
AA	22				
D		PER 600-11-013336			30JAN2011 RZ KZ
E		ECCO-11-015766			30MAY2011 EL LR

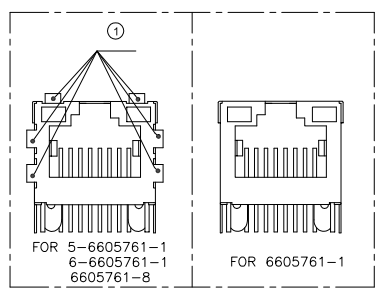
MECHANICAL:



ELECTRICAL:
 726ET SERIES MAGNETIC CIRCUIT



C1=1000pF, 2kV CAPACITOR
 R1-R4 = 75 OHMS, 1/16 W RESISTORS



- MATERIALS:**
- HOUSING - THERMOPLASTIC PET POLYESTER FLAMMABILITY RATING UL 94V-0.
 - SHIELD - .010" THICK, C26800 BRASS PREPLATED WITH 30μINCH MIN SEMI-BRIGHT NICKEL, SOLDER TABS POST DIPPED WITH 100μINCH MIN SAC SOLDER.
 - HOD JACK CONTACTS - 0.015" x 0.018" PHOSPHOR BRONZE, 50μINCH MIN OVERALL NICKEL UNDERPLATE, WITH SELECT 50μINCH MIN HARD GOLD FINISH PLATE.
 - SOLDERTAILS WITH 100μINCH MIN MATTE TIN AND/OR SAC SOLDER DIP.
 - LIGHT EMITTING DIODE(LED) - DIFFUSED EPOXY LENS, .020" x .020" CARBON STEEL WIREFRAME LEADS PRE-PLATED WITH 80μINCH SILVER OVER 4μINCH NICKEL UNDERPLATE OVER 40μINCH COPPER UNDERPLATE, POST-PLATED WITH 100μINCH MIN MATTE TIN AND/OR SAC SOLDER DIP OR PURE TIN SOLDER DIP.
- MAGNETICS**
- IMPEDANCE: 100 OHMS
 - TURNS RATIO (CHP CABLE): TX = 11, RX = 11
 - OPEN CIRCUIT INDUCTANCE (OCL): 350μH MIN @100kHz, 0.1VRMS, 8mA DC BIAS FROM -40°C TO +85°C, TX AND RX
 - PERFORMANCE @ 25°C
 - INSERTION LOSS (IL): 1.1dB MAX FROM 0.5MHz TO 100MHz
 - RETURN LOSS (RL): 18dB MIN FROM 0.5MHz TO 30MHz
 - 18-20LOG(I/F) MIN FROM 30.1MHz TO 60MHz
 - 12dB MIN FROM 60.1MHz TO 80MHz
 - CROSSTALK ATTENUATION: 35dB MIN FROM 0.5MHz TO 4.0MHz
 - 33-20+LOG(I/F) MIN FROM 4.0.1MHz TO 100MHz
 - COMMON MODE REJECTION RATIO (CMRR): 30dB MIN FROM 0.5MHz TO 100MHz
 - ISOLATION VOLTAGE: 2250VDC (MAX) FOR 60 SECONDS WITH A RISE TIME OF 500V/SEC.
- 4. OPERATING TEMPERATURE:** FROM -40°C TO +85°C INDUSTRIAL TEMPERATURE RATED.
- LED WITH 250 OHM RESISTORS, LED IS DRIVEN WITH 5V VOLTAGE AND THE MAX OPERATING CURRENT IS 20mA.**
- LED COLOR - DOMINANT WAVELENGTH (λD):** GREEN 568 nm TYP @ VF=5V
FORWARD CURRENT (IF): GREEN 12 mA TYP @ VF=5V
DOMINANT WAVELENGTH (λD): YELLOW 588 nm TYP @ VF=5V
FORWARD CURRENT (IF): YELLOW 13 mA TYP @ VF=5V
- LED WITHOUT RESISTORS, LED IS DRIVEN WITH CONSTANT CURRENT AT APPROX 20mA**
- LED COLOR - DOMINANT WAVELENGTH (λD):** GREEN 568 nm TYP. at IF=20mA
FORWARD VOLTAGE (VF): GREEN 2.2V TYP. at IF=20mA
DOMINANT WAVELENGTH (λD): YELLOW 588 nm TYP. at IF=20mA
FORWARD VOLTAGE (VF): YELLOW 2.1V TYP. at IF=20mA
- INDICATED CONNECTIONS ARE FOR NIC CONFIGURATION. THE MAGNETICS ARE SYMMETRICAL, AND SUPPORTS AUTO-IND/MIDX.**
- TE CONNECTIVITY LOGO, TE CONNECTIVITY PART NUMBER, DATE CODE, COUNTRY OF ORIGIN AND AGENCY APPROVAL MARKING IN APPROXIMATE LOCATION SHOWN.**
- 8. THESE PARTS ARE RECOMMENDED FOR WAVE SOLDERING PROCESS. PREHEAT TEMPERATURE IS 120°C TO 160°C, 120 SECONDS TO 180 SECONDS, PEAK SOLDERING TEMPERATURE IS 260 °C MAX, 10 SECONDS MAX.**

YES	W/O	GREEN	W/O	YELLOW	6605761-8
NO	W/	GREEN	W/	YELLOW	6605761-1
YES	W/	GREEN	W/	GREEN	6-6605761-1
YES	W/	GREEN	W/	YELLOW	5-6605761-1

TABS (1) WITH RESISTOR (250 Ohms) LED1 (1) WITH RESISTOR (250 Ohms) LED2 (2) PART NUMBER

THIS DRAWING IS A CONTROLLED DOCUMENT. THE USER IS ADVISED THAT THIS DRAWING IS THE PROPERTY OF TE CONNECTIVITY. IT IS TO BE USED ONLY FOR THE PURPOSES AND IN THE MANNER SPECIFIED BY THE USER'S ORDER. IT IS NOT TO BE REPRODUCED OR TRANSMITTED IN ANY FORM OR BY ANY MEANS, ELECTRONIC OR MECHANICAL, INCLUDING PHOTOCOPYING, RECORDING, OR BY ANY INFORMATION STORAGE AND RETRIEVAL SYSTEM. WITHOUT THE WRITTEN PERMISSION OF TE CONNECTIVITY.

TE CONNECTIVITY
 1X1 MAG45(TM), MODULAR JACK, 726ET INDUSTRIAL TEMP SCHEMATIC, 726ET SERIES CIRCUIT, DECOUPLING CAPACITOR, WITH RESISTOR LEADS

DATE: 08/07/08
 SIZE: 008 (3mm x 3mm)
 PART NUMBER: 6605761-1

CUSTOMER DRAWING