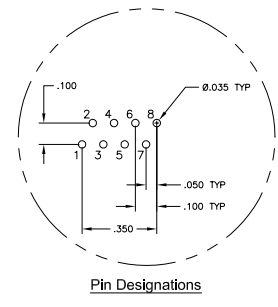
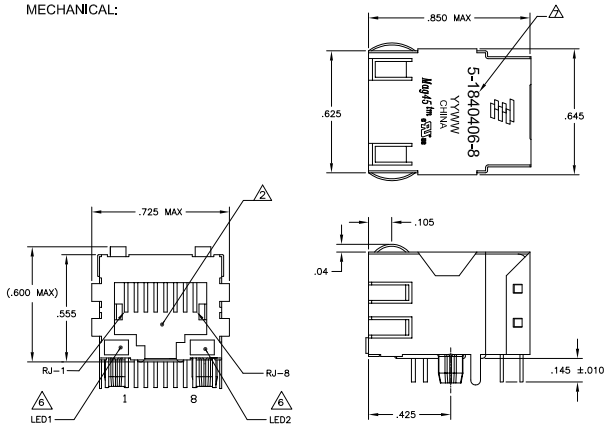


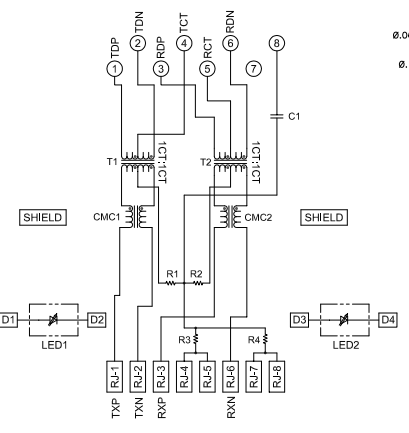
MECHANICAL:



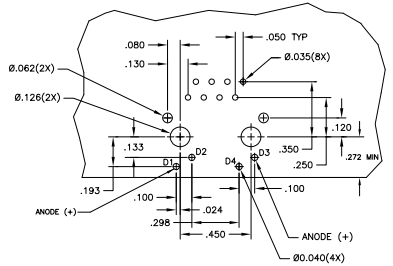
Pin Designations

ELECTRICAL:

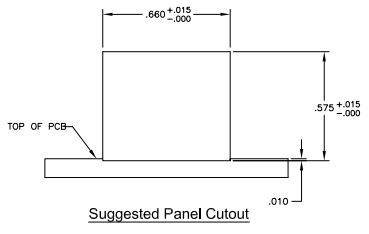
326P13 MAGNETIC CIRCUIT



C1=1000pF, 2KV CAPACITOR
R1-R4=75 OHMS, 5%, 1/16W RESISTORS

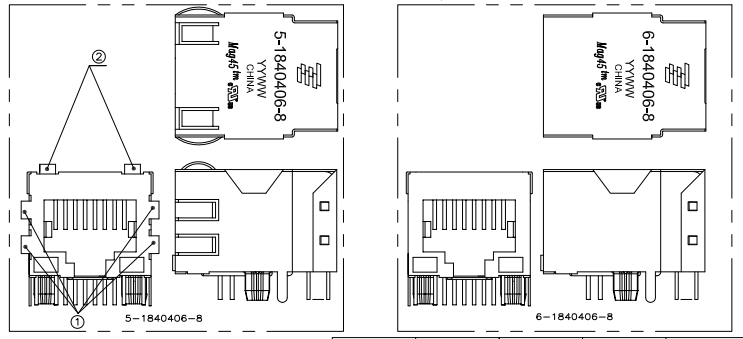


Suggested PCB Layout
(Component Side)



Suggested Panel Cutout

- △ MATERIALS:
 - HOUSING - THERMOPLASTIC PET POLYESTER FLAMMABILITY RATING UL 94-V0
 - SHIELD - .010" THICK, C26800 BRASS PREPLATED WITH 30μinch SEM-BRIGHT NICKEL; SOLDER TABS POST-DIPPED WITH 100μinch MIN SAC SOLDER
 - MOD JACK CONTACTS - .0157" x .018" THICK, PHOSPHOR BRONZE, 50μinch MIN OVERALL NICKEL UNDERPLATE, WITH SELECT 50μinch MIN HARD GOLD FINISH PLATE, SOLDER TAILS WITH 100μinch MATTE TIN AND/OR SAC SOLDER DIP.
 - LIGHT EMITTING DIODE(LED) - DIFFUSED EPOXY LENS, .020" x .020" CARBON STEEL WIREFRAME LEADS PREPLATED WITH 80 μinch SILVER OVER 40 μinch NICKEL UNDERPLATE OVER 40μinch COPPER UNDERPLATE; POST-PLATED WITH 100 μinch MIN MATTE TIN AND/OR SAC SOLDER DIP OR PURE TIN SOLDER DIP.
- △ RJ45 JACK CAVITY CONFORMS TO FCC RULES AND REGULATIONS PART 68, SUB PART F.
- △ MAGNETICS
 - APPLICATION: 10/100 BASE-T
 - IMPEDANCE: 100 OHMS
 - TURNS RATIO (CHIRPCABLE): TX = 1:1, RX = 1:1
 - OPEN CIRCUIT INDUCTANCE (OCL): 350uH MIN @100kHz, 0.1VRMS, 8mADC BIAS FROM 0°C TO 70°C, TX AND RX
 - PERFORMANCE @ 25°C:
 - INSERTION LOSS (IL): 1.1dB MAX FROM 0.5MHz TO 100MHz
 - RETURN LOSS (RL): 18dB MIN FROM 0.5MHz TO 30MHz
 - 18-20LOG(f/30)dB MIN FROM 30.1MHz TO 60MHz
 - 12dB MIN FROM 60.1MHz TO 80MHz
 - CROSSTALK ATTENUATION: 35dB MIN FROM 0.5MHz TO 40MHz
 - 33-20LOG(f/50)dB MIN FROM 40.1MHz TO 100MHz
 - COMMON MODE REJECTION RATIO (CMRR): 30dB MIN FROM 0.5MHz TO 100MHz
 - ISOLATION VOLTAGE: COMPLIES WITH IEEE802.3 2002, PARA 23.5.1.1, ITEM b.
- 4. OPERATING TEMPERATURE: FROM 0°C TO +70°C.
- △ THE MAGNETICS ARE SYMMETRICAL, AND SUPPORTS AUTO-MDI/MDX.
- △ LEADS WITHOUT BUILT-IN RESISTOR
 - LEDS ARE DRIVEN WITH CONSTANT CURRENT AT APPROX 20 mA
 - LED COLOR: DOMINANT WAVELENGTH (λD): GREEN 568 nm TYP @ IF=20 mA
 - FORWARD VOLTAGE (VF): GREEN 2.2V TYP @ IF=20 mA
 - DOMINANT WAVELENGTH (λD): YELLOW 588 nm TYP @ IF=20 mA
 - FORWARD VOLTAGE (VF): YELLOW 2.1V TYP @ IF=20 mA
- △ TYCO ELECTRONICS LOGO, PART NUMBER, DATE CODE, COUNTRY OF ORIGIN AND AGENCY APPROVAL MARKING IN APPROXIMATE LOCATION SHOWN.
- 8. THE PART IS RECOMMENDED FOR WAVE SOLDERING PROCESS. PEAK SOLDERING TEMPERATURE IS 265 °C MAX, 10 SECONDS MAX.



| NO | NO | GREEN | YELLOW | 6-1840406-8 |
|-----------|------------------------|-------|--------|-------------|
| YES | YES | GREEN | YELLOW | 5-1840406-8 |
| TOP FRONT | ② LEFT AND RIGHT FRONT | LED1 | LED2 | PART NUMBER |

| | | | | | |
|--|-----------|----------|----------|----------|----------|
| THIS DRAWING IS A CONTROLLED DOCUMENT. | REVISIONS | DATE | BY | CHK | APP |
| DESIGNER | APPROVED | DATE | BY | CHK | APP |
| DATE | DATE | DATE | DATE | DATE | DATE |
| 108-2100 | 108-2100 | 108-2100 | 108-2100 | 108-2100 | 108-2100 |
| 111 MAC42(TM), 402P13 10/100 ETHERNET SCHEMATIC, 326P13 MAGNETIC CIRCUIT, SHIELDED, DECOUPLING CAPACITOR, WITH LEADS | | | | | |
| REV | REV | REV | REV | REV | REV |
| A1 | 00779 | 1840406 | | | |
| CUSTOMER DRAWING | | | | | |