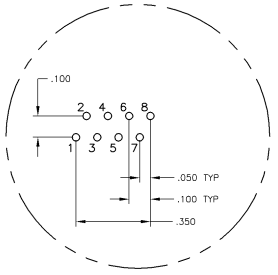
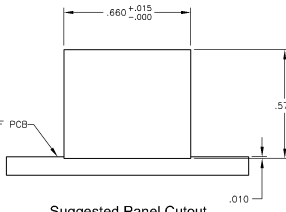
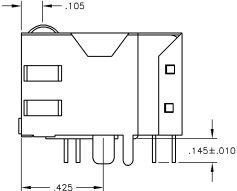
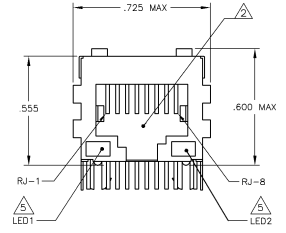
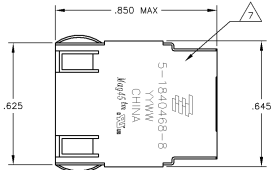
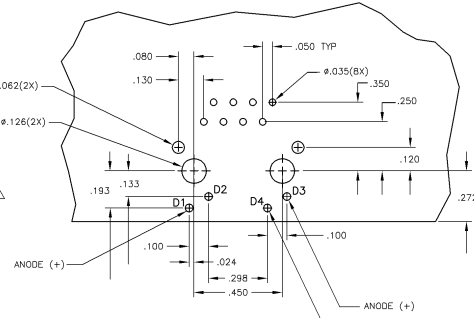


MECHANICAL:

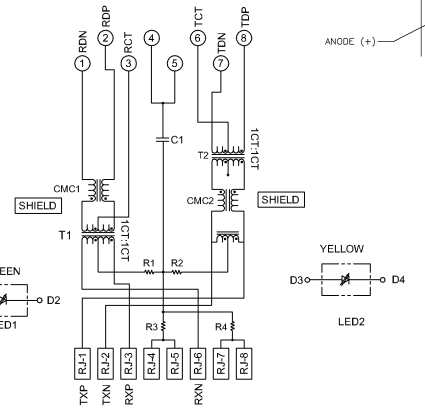


Pin Designations



Suggested PCB Layout (Component Side)

ELECTRICAL:
467P10 SERIES MAGNETIC CIRCUIT



C1=1000µF, 24V DECOUPLING CAPACITOR
R1-R4 = 75 OHMS, 1/16 W. RESISTORS

- △ MATERIALS
HOUSING - THERMOPLASTIC PET POLYESTER FLAMMABILITY RATING UL 94V-0
SHIELD - .010" THICK, C26800 BRASS PREPLATED WITH 30µINCH SEMI-BRIGHT NICKEL SOLDER TABS POST DIPPED WITH 100µINCH MIN SAC SOLDER
MOD JACK CONTACTS - 0.0157 x 0.018" PHOSPHOR BRONZE, 50µINCH MIN OVERALL NICKEL UNDERPLATE, WITH SELECT 50µINCH MIN HARD GOLD FINISH PLATE
SOLDERTAILS WITH 100µINCH MIN MATTE TIN AND/OR SAC SOLDER DIP
LIGHT EMITTING DIODE(LEDS) - DIFFUSED EPOXY LENS, .020" x .020" CARBON STEEL WIREFRAME LEADS PRE-PLATED WITH 80µINCH SILVER OVER 40µINCH NICKEL UNDERPLATE OVER 10µINCH COPPER UNDERPLATE, POST-PLATED WITH 100µINCH MIN MATTE TIN AND/OR SAC SOLDER DIP OR PURE TIN SOLDER DIP
- △ RJ45 JACK CAVITY CONFORMS TO FCC RULES AND REGULATIONS PART 48, SUB PART F
- △ MAGNETICS
-IMPEDANCE 100 OHMS
-TURNS RATIO (RHP CABLE) TX + 11 BX + 11
-OPEN CIRCUIT INDUCTANCE (OCL) 350µH MIN @100MHz, 0 IVRMS, 8mADC BIAS FROM 0°C TO 70°C, TX AND RX
-PERFORMANCE @ 25°C
INSERTION LOSS (IL) 1.1dB MAX FROM 0.5MHz TO 100MHz
RETURN LOSS (RL) 18dB MIN FROM 0.5MHz TO 30MHz
18-20LOG(S)/30dB MIN FROM 30 MHz TO 60MHz
12dB MIN FROM 60 MHz TO 80MHz
CROSSTALK ATTENUATION 35dB MIN FROM 0.5MHz TO 40MHz
33-20LOG(S)/50dB MIN FROM 40 MHz TO 100MHz
COMMON MODE REJECTION RATIO (CMRR) 30dB MIN FROM 0.5MHz TO 100MHz
-ISOLATION VOLTAGE 2550 VDC FOR 60 SECONDS DURATION
- 4. OPERATING TEMPERATURE FROM 0°C TO -70°C
- △ LEDS ARE DRIVEN WITH CONSTANT CURRENT AT APPROX 20 mA
LED COLOR
DOMINANT WAVELENGTH (λD) GREEN 568 nm TYP @ IF=20 mA
FORWARD VOLTAGE (VF) GREEN 2.2V TYP @ IF=20 mA
DOMINANT WAVELENGTH (λD) YELLOW 588 nm TYP @ IF=20 mA
FORWARD VOLTAGE (VF) YELLOW 2.1V TYP @ IF=20 mA
- △ INDICATED CONNECTIONS ARE FOR NDC CONFIGURATION. THE MAGNETICS ARE ASYMMETRICAL, AND DO NOT SUPPORT AUTO-MDM/MDIX
- △ TYCO ELECTRONICS LOGO, PART NUMBER, DATE CODE, COUNTRY OF ORIGIN AND AGENCY APPROVAL MARKING IN APPROXIMATE LOCATION SHOWN
- 8. THESE PARTS ARE RECOMMENDED FOR WAVE SOLDERING PROCESS, PREHEAT TEMPERATURE IS 120°C TO 160°C, 120 SECONDS TO 180 SECONDS, PEAK SOLDERING TEMPERATURE IS 260 °C MAX, 10 SECONDS MAX.

| | | | | | | | |
|--|------|-------------|-------------|-------------|-----|-------|-----|
| THIS DRAWING IS A CONTROLLED DOCUMENT. | | REV | DATE | DESCRIPTION | BY | CHK | APP |
| DESIGNED | BY | DATE | DESCRIPTION | BY | CHK | APP | |
| DRW | DATE | DESCRIPTION | BY | CHK | APP | | |
| 108-104004 | | | | | | | |
| 100779 | | | | | | | |
| CUSTOMER DRAWING | | SCALE | 1:1 | PAGE | 1 | TOTAL | 1 |