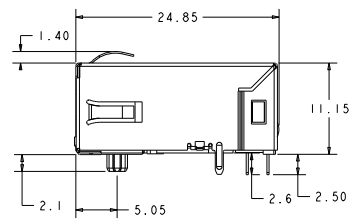
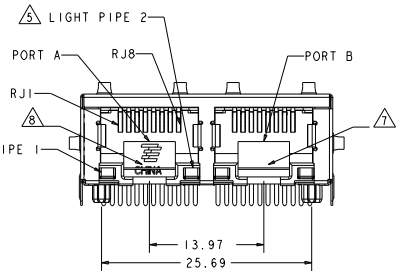
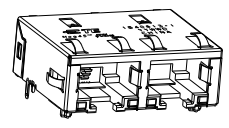
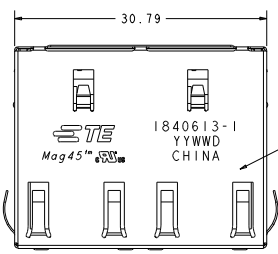
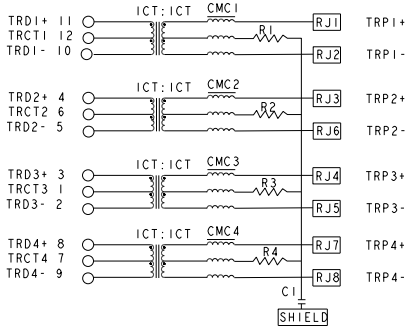


THIS DRAWING IS UNPUBLISHED. RELEASES FOR PUBLICATION BY . ALL RIGHTS RESERVED.

LOC	DATE	REV	DESCRIPTION	DATE	BY	APPV
AA	00	1	INITIAL RELEASE	15MAR2011	JO	KZ
		A	RELEASE PER ECO-11-024716	05DEC2011	TY	KZ



8G18 GIGABIT CIRCUIT

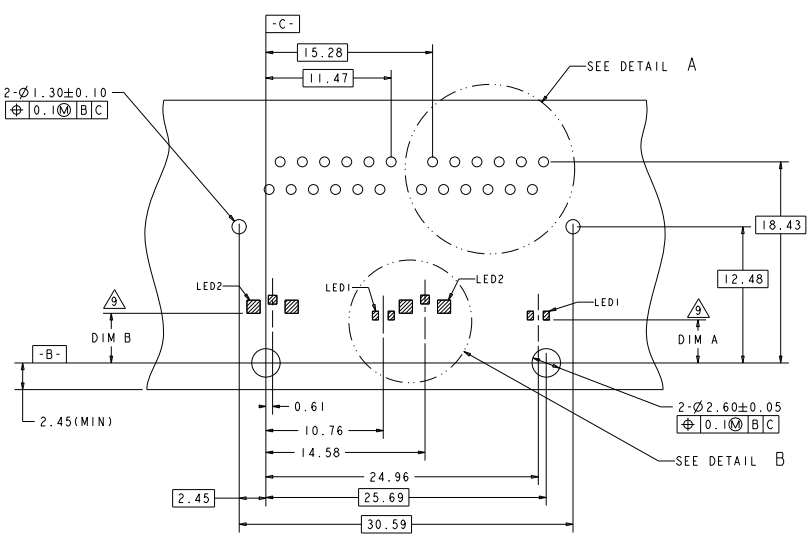


C1=1000 pF, 3kV, DECOUPLING CAP  
R1-R4=75 Ohms RESISTOR

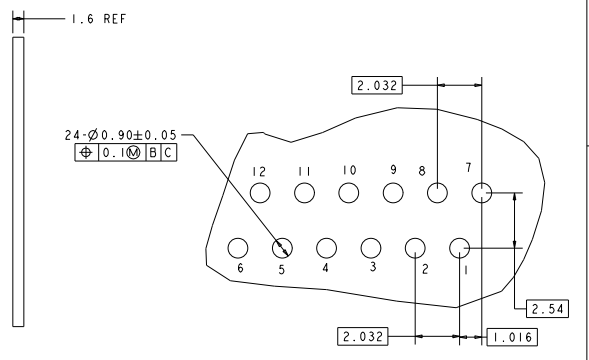
- △ MATERIALS:  
HOUSING: THERMOPLASTIC, BLACK, FLAMMABILITY RATING UL 94V-0  
SHIELD: BRASS, THICKNESS = 0.2mm, PREPLATED WITH MIN 0.76 μm SEMI-BRIGHT NICKEL, POST DIPPED WITH 2.54 μm MIN SAC 305 ALLOY LEAD FREE SOLDER AT GROUND PINS  
CONTACT: PHOSPHOR BRONZE, 0.25mm THICK, 0.46mm WIDE, PREPLATED WITH 1.27μm MIN NICKEL OVERALL UNDERPLATE AND SELECTIVE 1.27 μm MIN GOLD PLATED ON MATING INTERFACE  
CONTACT TAIL: PHOSPHOR BRONZE, 0.3mm THICK, WITH 1.27μm MIN NICKEL OVERALL UNDERPLATE AND 2.54 μm MIN MATTE TIN OVERALL PLATED  
LIGHT PIPE: POLYETHER SULFONE, TRANSPARENT, RATING UL 94V-0
- △ MAGNETIC:  
-APPLICATIONS: 10/100/1000 BASE-T  
-IMPEDANCE: 100 OHMS  
-TURNS RATIO (CHIP:CABLE): 1:1 ALL 4 PAIRS  
-OPEN CIRCUIT INDUCTANCE(OCL): 350 nH MIN AT 100kHz, 0.1VRMS 8mA DC BIAS, FROM 0°C TO 70°C. ALL 4 PAIRS  
-ALL 4 PAIRS ARE BI-DIRECTIONAL.  
-PERFORMANCE AT 25 °C:  
  -INSERTION LOSS(IL): 1.1dB MAX FROM 0.5MHz TO 100MHz.  
  RETURN LOSS(RL): 18dB MIN FROM 0.5MHz TO 40MHz.  
  CROSS TALK ATTENUATION: 35 dB MIN FROM 0.5MHz TO 40MHz.  
  33-20LOG(I/50)dB MIN FROM 40.1MHz TO 100MHz.  
COMMON MODE REJECTION RATIO (CMRR): 30dB MIN FROM 0.5MHz TO 100MHz  
-ISOLATION VOLTAGE: 2250VDC (MAX) FOR 60 SECONDS WITH A RISE TIME OF 500V/SEC AND WITH ALL PORTS CONNECTED.
- △ THE MAGNETIC CIRCUIT IS SYMMETRICAL AND SUPPORTS AUTO-MDIX OPERATION.
- 4. OPERATING TEMPERATURE: FROM 0°C TO 70°C.
- △ LIGHT PIPES PROVIDED TO GUIDE LIGHT FROM SURFACE MOUNT LEDS LOCATED ON CUSTOMER PC BOARD. RECOMMENDED LEDS ARE:  
LED 1 EVERLIGHT 27-210YK-SS30-X1-TR8 OR EQUIVALENT  
LED 2 EVERLIGHT 12-225URSVC/SS30-A3/E2/TR8 OR EQUIVALENT.
- 6. ALL DIMENSIONS ARE NOMINAL UNLESS OTHERWISE NOTED.
- △ RJ45 CAVITY CONFORMS TO FCC RULES AND REGULATIONS PART 68 SUBPART F.
- △ TE CONNECTIVITY LOGO, PART NO., DATE CODE, COUNTRY OF ORIGIN, AND AGENCY LOGO ARE TO BE MARKED AT APPROXIMATE LOCATION, DATE CODE: YYWW  
"YY" IS YEAR, "WW" IS WORK WEEK, "D" IS DAY OF WEEK WITH SUNDAY=1
- △ DIMENSION A AND DIMENSION B TO BE ESTABLISHED BY CUSTOMER. THESE DIMENSIONS SHOULD CONSIDER THE PROCESS TOLERANCES FOR THE CUSTOMER PCB TO ENSURE THAT LED'S ARE OPTIMALLY POSITIONED NEAR THE LIGHTPIPES. LED POSITION THAT DOES NOT FOLLOW THE RECOMMENDED POSITIONING MAY CAUSE MECHANICAL INTERFERENCE BETWEEN LED AND LIGHTPIPE OR IT MAY DEGRADE ILLUMINATION THROUGH THE LIGHTPIPE.

THIS DRAWING IS A CONTROLLED DOCUMENT.		DATE: 15MAR2011	1840613-1
DRAWN BY: JERRY O'CONNOR		DATE: 15MAR2011	PART NUMBER
CHECKED BY: TOWER YU/STAN LUI		DATE: 15MAR2011	
APPROVED BY: KEITH ZHU		DATE: 15MAR2011	
PRODUCT SPEC: TX2 MAG45 MODULAR JACK 8G18 GIGABIT CIRCUIT, TAB DOWN WITH LED LIGHTPIPE		APPLICATION SPEC: -	SIZE: CAGE CODE: DRAWING NO: -
MATERIAL: BRASS		WEIGHT: -	RESTRICTED TO: -
FINISH: -		CUSTOMER DRAWING: A200779	SCALE: 3:1 SHEET 1 OF 2 REV A

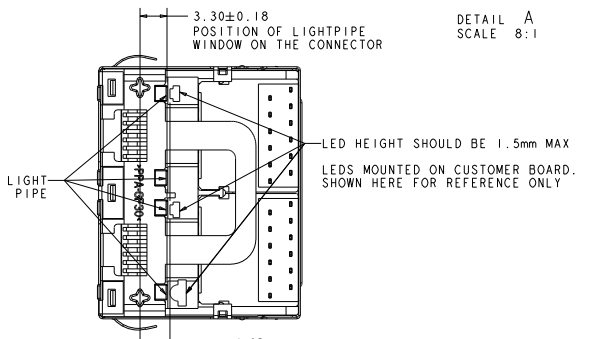
REVISONS			
NO	DATE	DESCRIPTION	BY
1		SEE SHEET 1	



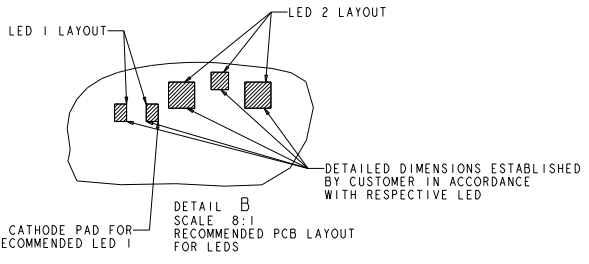
RECOMMENDED PCB LAYOUT  
COMPONENT SIDE



DETAIL A  
SCALE 8:1



RECOMMENDED LED POSITIONS  
BOTTOM VIEW



DETAIL B  
SCALE 8:1  
RECOMMENDED PCB LAYOUT  
FOR LEDs

THIS DRAWING IS A CONTROLLED DOCUMENT.		DATE: 15 MAR 2011	TE Connectivity	
DRAWN BY: JERRY QI/CHEN ZHOU		DATE: 15 MAR 2011	1X2 MAG45 MODULAR JACK 8G18 GIGABIT CIRCUIT, TAB DOWN WITH LED LIGHTPIPE	
CHECKED BY: TOWER YU/FRANK LIU		DATE: 15 MAR 2011	SIZE: CAGE CODE: DRAWING NO: A200779 © 1840613	
DESIGNED BY: KEITH ZHU		DATE: 15 MAR 2011	RESTRICTED TO: -	
APPROVED BY: KEITH ZHU		DATE: 15 MAR 2011	SCALE: 3:1 SHEET 2 OF 2 REV A	
MATERIAL: -		FINISH: -	CUSTOMER DRAWING	