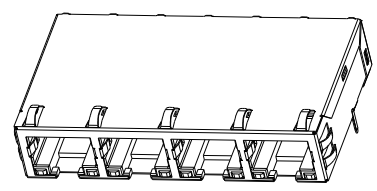
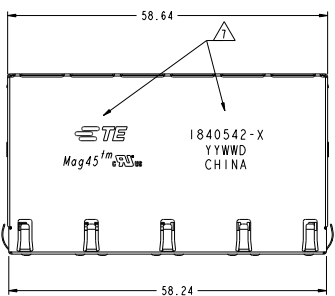


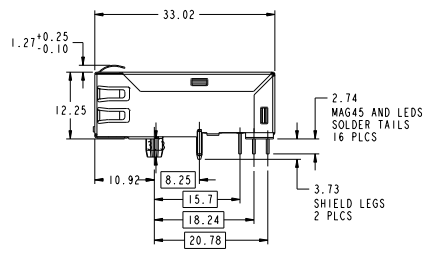
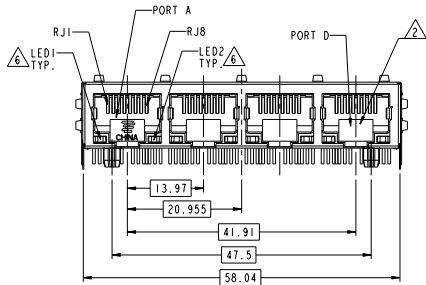
THIS DRAWING IS UNPUBLISHED. RELEASES FOR PUBLICATION
 © COPYRIGHT 20 TE CONNECTIVITY CORPORATION. ALL RIGHTS RESERVED.

LOC	DATE	REVISIONS	DATE	DRN	APPV
AA	00				
B		PER ECO-08-008255	4-JUN-08	LD	TX
C		ECO-10-013332	28JUN2010	RL	KZ
D		ECO-11-014535	01JUL2011	PP	LJ

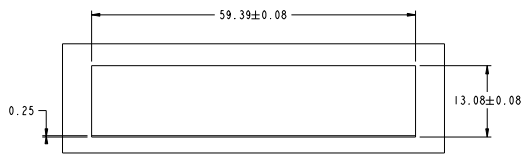


SCALE 2:1

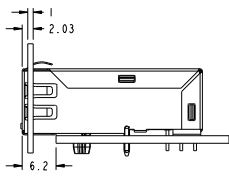
- △ MATERIALS
 HOUSING: THERMOPLASTIC, BLACK, FLAMMABILITY RATING UL 94V-0
 SHIELD: BRASS, 0.20mm THICK
 PREPLATED WITH MIN 0.76um SEMI-BRIGHT NICKEL
 POST DIPPED WITH 2.54um MIN SAC SOLDER AT GROUND PINS.
 CONTACT: PHOSPHOR BRONZE, 0.46mm X0.3mm
 WITH 1.27um MIN OVERALL NICKEL UNDERPLATE AND
 SELECTIVE 1.27um MIN GOLD PLATING AT MATING INTERFACE
 SOLDER TAIL: COPPER CLADDED STEEL, 0.50mm SQUARE
 PLATED WITH 2.54um MIN MATTE TIN
 LIGHT PIPE: POLYCARBON, TRANSPARENT, RATING UL 94V-0
- △ RJ45 CAVITY CONFORMS TO FCC RULES AND REGULATION PART 68 SUBPART F.
- △ MAGNETICS
 -APPLICATION: 10/100/1000 BASE-T
 -IMPEDANCE: 100 OHMS
 -TURNS RATIO (CHIP-CABLE): 1:1 ALL FOUR PAIRS
 -OPEN CIRCUIT INDUCTANCE (OCL): 350nH MIN @100kHz, 0.1VRMS,
 8mA DC BIAS FROM 0°C TO 70°C, ALL FOUR PAIRS
 -ALL FOUR PAIRS BI-DIRECTIONAL
 -PERFORMANCE @ 25°C:
 INSERTION LOSS (IL): 1.1dB MAX FROM 0.5MHz TO 100MHz
 RETURN LOSS (RL): 18dB MIN FROM 0.5MHz TO 40MHz
 12-20LOG(I/80)dB MIN FROM 40.1MHz TO 100MHz
 CROSSTALK ATTENUATION: 35dB MIN FROM 0.5MHz TO 40MHz
 33-20LOG(I/50)dB MIN FROM 40.1MHz TO 100MHz
 COMMON MODE REJECTION RATIO (CMRR): 30dB MIN FROM 0.5MHz TO 100MHz
 -ISOLATION VOLTAGE: COMPLIES WITH IEEE802.3 2002, PARA 40.6.1.1, ITEM a and b.



- 4. OPERATING TEMPERATURE: 0°C ~ 70°C
- △ THE MAGNETIC CIRCUIT ON ALL FOUR CHANNELS ARE SYMMETRICAL AND SUPPORT AUTO-MDIX OPERATION.
- △ LED IS DRIVEN WITH CONSTANT CURRENT AT APPROX 20mA.
 LED COLOR: DOMINANT WAVELENGTH (λD): GREEN 568 nm TYP. at IF=20mA
 FORWARD VOLTAGE (VF): GREEN 2.2V TYP. at IF=20mA
 DOMINANT WAVELENGTH (λD): YELLOW 588 nm TYP. at IF=20mA
 FORWARD VOLTAGE (VF): YELLOW 2.2V TYP. at IF=20mA
 DOMINANT WAVELENGTH (λD): ORANGE 608 nm TYP. at IF=20mA
 FORWARD VOLTAGE (VF): ORANGE 2.2V TYP. at IF=20mA
- △ TE CONNECTIVITY LOGO, PART NUMBER, DATE CODE, COUNTRY OF ORIGIN, AGENCY LOGO TO BE MARKED IN APPROXIMATE LOCATION SHOWN.
 DATE CODE YY IS YEAR, WW IS WORK WEEK, D IS DAY OF WEEK, WITH SUNDAY=1.
- 8. THESE PARTS ARE RECOMMENDED FOR WAVE SOLDERING PROCESS, PEAK SOLDERING TEMPERATURE IS 265 °C MAX, 10 SECONDS MAX.



SUGGESTED PANEL CUTOUT
 SCALE 2:1



CONNECTOR ASSEMBLED
 TO PANEL AND PCB
 SCALE 2:1

GREEN/ORANGE	YELLOW	1840542-3
GREEN	YELLOW	1840542-2
GREEN	GREEN	1840542-1
LED1	LED2	PART NUMBER

THIS DRAWING IS A CONTROLLED DOCUMENT.

DATE: 30-AUG-07
 BY: LINDA DING
 CHECKED: HEATH ZHU
 APPROVED: TERRY ZHANG

DATE: 30-AUG-07
 BY: TERRY ZHANG
 CHECKED: LINDA DING

PRODUCT SPEC: 1X4 MAG45(TM) MODULAR JACK TAB DOWN LOW PROFILE, 6G53 GIGABIT CIRCUIT SHIELDED, WITH LEDS

APPLICATION SPEC: SIZE: CAGE CODE: DRAWING NO: A2 00779 © 1840542

WEIGHT: -

CUSTOMER DRAWING: SCALE: NTS SHEET 1 OF 2 REV D

TE Connectivity

4

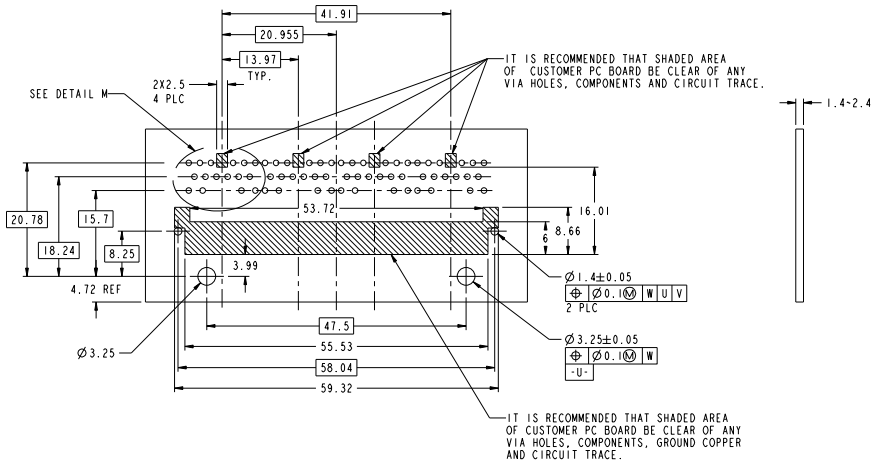
3

2

1

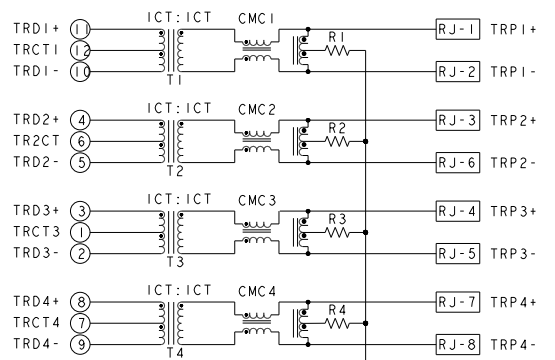
THIS DRAWING IS UNPUBLISHED. RELEASES FOR PUBLICATION
 © COPYRIGHT 20 TE CONNECTIVITY CORPORATION. ALL RIGHTS RESERVED.

LOC	DIST	REVISIONS			
AA	00	REV	DESCRIPTION	DATE	BY
		--	SEE SHEET 1	-	--

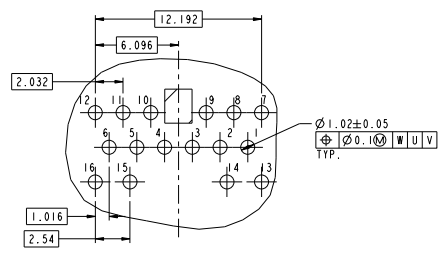


SUGGESTED PCB FOOTPRINT
 COMPONENT SIDE
 SCALE 2:1

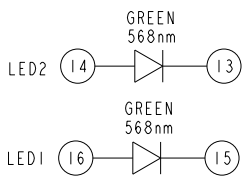
8G53 GIGABIT CIRCUIT



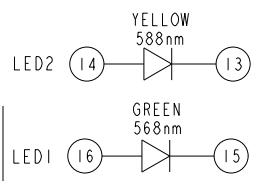
R1-R4=75 Ohms, 1/16W, 5% RESISTORS
 C1=1000 pF, 3kV CAPACITOR



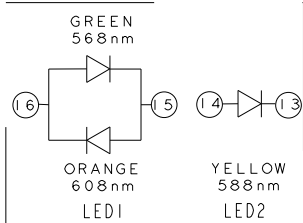
DETAIL M
 SCALE 5:1



LED CONFIGURATION
 FOR 1840542-1 ONLY



LED CONFIGURATION
 FOR 1840542-2 ONLY



LED CONFIGURATION
 FOR 1840542-3 ONLY

THIS DRAWING IS A CONTROLLED DOCUMENT.		DRG: LINDA DING 30-AUG-07	TE Connectivity
DIMENSIONS: mm		CHK: HEILH ZHU 30-AUG-07	
TOLERANCE UNITS: OPERATED SHIFTS:		APPD: TERRY XIONG 30-AUG-07	TX4 MAG45(TM) MODULAR JACK TAB DOWN LOW PROFILE, 8G53 GIGABIT CIRCUIT SHIELDED, WITH LEDS
MATERIAL:		PRODUCT SPEC:	
APPLIC. SPEC:		SIZE: A2	CHG CODE: 00779
REVISIONS:		DATE: 30-AUG-07	DRAWING NO: 1840542
CUSTOMER DRAWING:		SCALE: NTS	SHEET 2 OF 2