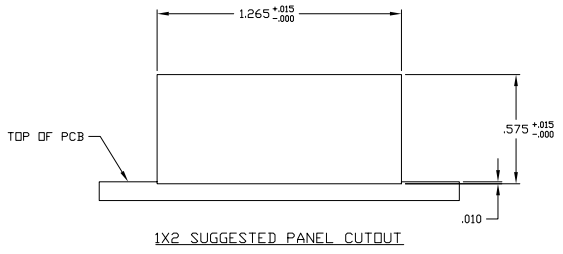
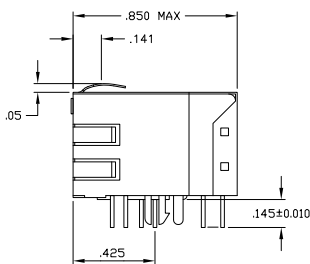
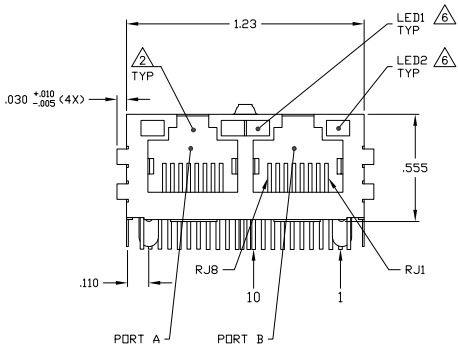
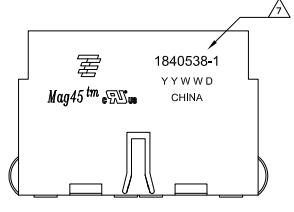


MECHANICAL:



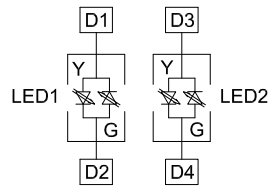
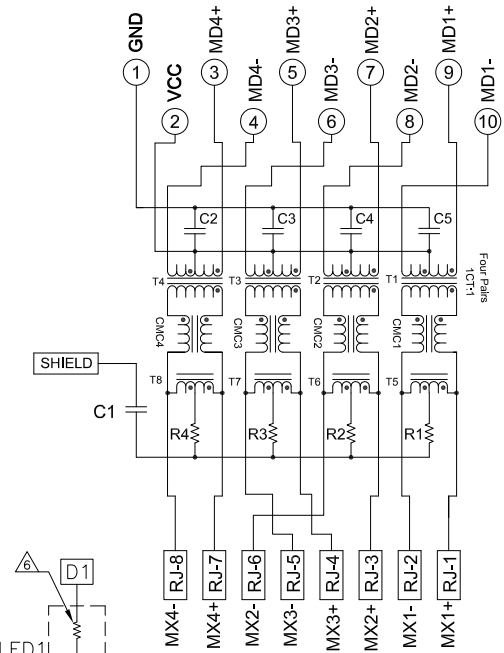
- △ MATERIALS:
 - HOUSING - THERMOPLASTIC PET POLYESTER FLAMMABILITY RATING UL 94V-0.
 - SHIELD - .010" THICK, C28000 BRASS PREPLATED WITH 30μINCH SEMI-BRIGHT NICKEL. SOLDER TABS POST DIPPED WITH 100μINCH MIN SAC SOLDER.
 - MOD JACK CONTACTS - 0.0157 X 0.018" PHOSPHOR BRONZE, 50μINCH MIN OVERALL NICKEL UNDERPLATE, WITH SELECT 50μINCH MIN HARD GOLD FINISH PLATE SOLDER TAILS WITH 100μINCH MIN MATTE TIN AND/OR SAC SOLDER DIP.
 - LIGHT EMITTING DIODE(LED) - DIFFUSED EPOXY LENS, .020" X .020" CARBON STEEL WIREFRAME LEADS PREPLATED WITH 80 μINCH SILVER OVER 40 μINCH NICKEL UNDERPLATE OVER 40μINCH COPPER UNDERPLATE.
 - POST-PLATED WITH 100 μINCH MIN MATTE TIN AND/OR SAC SOLDER DIP OR PURE TIN SOLDER DIP.
- △ RJ45 JACK CAVITY CONFORMS TO FCC RULES AND REGULATIONS PART 68, SUB PART F.
- △ MAGNETICS
 - APPLICATION: 10/100/1000 BASE-T
 - IMPEDANCE: 100 OHMS
 - TURNS RATIO (CHIP: CABLE): 1:1 ALL FOUR PAIRS
 - OPEN CIRCUIT INDUCTANCE (OCL): 350nH MIN @ 100kHz, 0.1VRMS, 50mADC BIAS FROM 0°C TO 70°C, ALL FOUR PAIRS
 - ALL FOUR PAIRS BI-DIRECTIONAL
 - PERFORMANCE @ 25°C:
 - INSERTION LOSS (IL): 1.1dB MAX FROM 0.5MHz TO 100MHz
 - RETURN LOSS (RL): 15dB MIN FROM 0.5MHz TO 40MHz
 - 12-20LOG(f/80)dB MIN FROM 40.1MHz TO 100MHz
 - CROSSTALK ATTENUATION: 35dB MIN FROM 0.5MHz TO 40MHz
 - 33-20LOG(f/50)dB MIN FROM 40.1MHz TO 100MHz
 - COMMON MODE REJECTION RATIO(CMRR): 30dBMIN FROM 0.5MHz TO 100MHz
 - ISOLATION VOLTAGE: COMPLIES WITH IEEE802.3 2002, PARA 40.6.1.1, ITEM b.
- 4. OPERATING TEMPERATURE: FROM 0°C TO + 70°C.
- △ THE MAGNETICS ARE SYMMETRIC, AND SUPPORT AUTO-MD/MIX.
- △ THE 250 OHM LED RESISTORS ARE OPTIONAL, PLEASE SEE CHART FOR PRESENCE OR ABSENCE OF LED RESISTORS. IF THE LED WITHOUT 250 OHM RESISTORS, LED IS DRIVEN WITH CONSTANT CURRENT AT APPROX 20mA.
 - LED COLOR: DOMINANT WAVELENGTH (λD): GREEN 568 nm TYP. @ IF=20mA
 - FORWARD VOLTAGE (VF): GREEN 2.2V TYP. @ IF=20mA
 - DOMINANT WAVELENGTH (λD): YELLOW 588 nm TYP. @ IF=20mA
 - FORWARD VOLTAGE (VF): YELLOW 2.1V TYP. @ IF=20mA.
- IF THE LED WITH 250 OHM RESISTORS, LED IS DRIVEN WITH 5V VOLTAGE AND THE MAX OPERATING CURRENT IS 20mA.
 - LED COLOR: DOMINANT WAVELENGTH (λD): GREEN 568 nm TYP. @ VF=5V
 - FORWARD CURRENT (IF): GREEN 12 mA TYP. @ VF=5V
 - DOMINANT WAVELENGTH (λD): YELLOW 588 nm TYP. @ VF=5V
 - FORWARD CURRENT (IF): YELLOW 13 mA TYP. @ VF=5V
- △ TYCO ELECTRONICS LOGO, PART NUMBER, DATE CODE, COUNTRY OF ORIGIN AND AGENCY APPROVAL MARKING IN APPROXIMATE LOCATION SHOWN.
- 6. THESE PARTS ARE RECOMMENDED FOR WAVE SOLDERING PROCESS, PREHEAT TEMPERATURE IS 120C TO 160C, 120 SECONDS TO 180 SECONDS, PEAK WAVE SOLDERING TEMPERATURE IS 260°C, MAX 10 SECONDS MAX.

GREEN	YES	YELLOW	YES	3-1840538-1
GREEN	YES	GREEN	YES	1-1840538-1
YELLOW	NO	YELLOW	NO	1-1840538-0
YELLOW	NO	GREEN	NO	1840538-9
GREEN	NO	YELLOW	NO	1840538-8
GREEN	NO	GREEN	NO	1840538-7
GREEN/YELLOW	NO	GREEN/YELLOW	NO	1840538-6
GREEN/YELLOW	NO	GREEN	NO	1840538-5
GREEN/YELLOW	NO	GREEN	YES	1840538-4
YELLOW	YES	YELLOW	YES	1840538-3
YELLOW	YES	GREEN	YES	1840538-2
GREEN	YES	YELLOW	YES	1840538-1
LED1	250 OHMS RESISTOR	LED2	250 OHMS RESISTOR	PART NUMBER

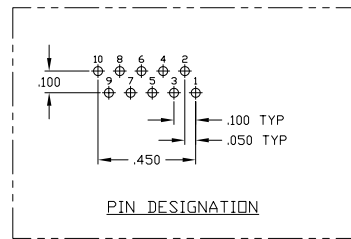
THIS DRAWING IS A CONTROLLED DOCUMENT. IT SHOULD BE KEPT IN THE ORIGINAL FILE.		REVISED		DATE		BY		APP	
DATE	BY	DATE	BY	DATE	BY	DATE	BY	DATE	BY
108-2100									
MATERIAL		PART		REV		DATE		BY	
CUSTOMER DRAWING		A1		00779		1840538			

ELECTRICAL:

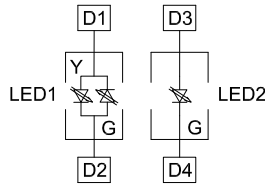
7G23P5 GIGABIT CIRCUIT  



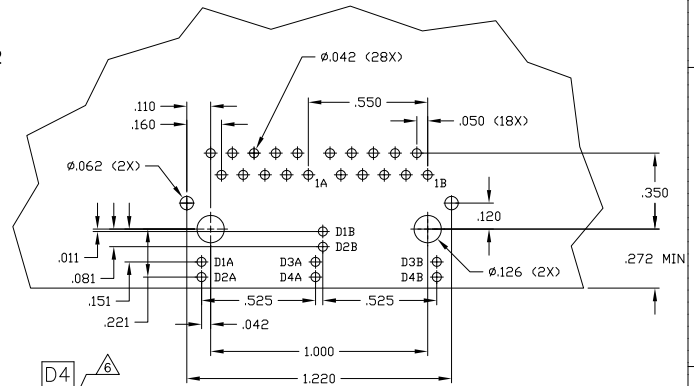
LED CONFIGURATION FOR BI-COLOR



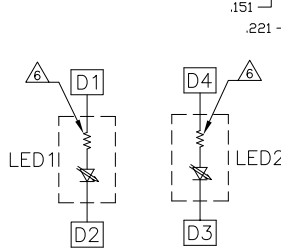
PIN DESIGNATION



LED CONFIGURATION FOR 1840538-4/5



SUGGESTED PCB LAYOUT (Component Side)



LED CONFIGURATION ONLY FOR 3-1840538-1

THIS DRAWING IS A CONTROLLED DOCUMENT.		REVISED	DATE	BY	REVISIONS
DATE	BY	DESCRIPTION	DATE	BY	APPV
00	AA	00			
		SEE SHEET 1			

DESIGNER	DATE	BY	REV	DESCRIPTION	DATE	BY	REV	DESCRIPTION
DIMENSIONS				UNIT	MATERIAL			
100-2100				INCH	1X2 MAG45(TM) MODULAR JACK, 7G23P5 GIGABIT CIRCUIT, SHIELDED, WITH LEADS			
APPROVED				DATE	DRAWN			
A1				00779	1840538			
CUSTOMER DRAWING				DATE	REV			
				00	2			