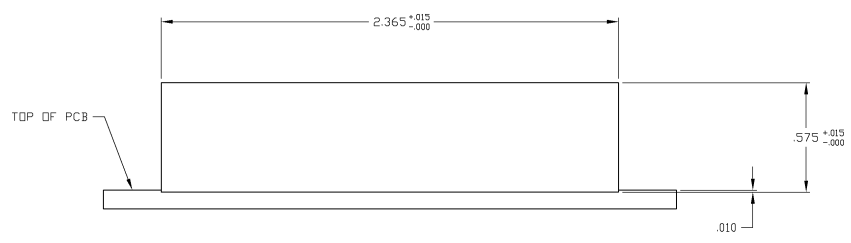
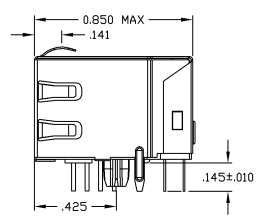
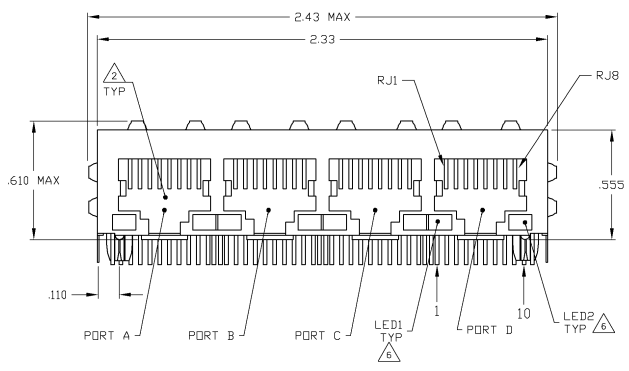
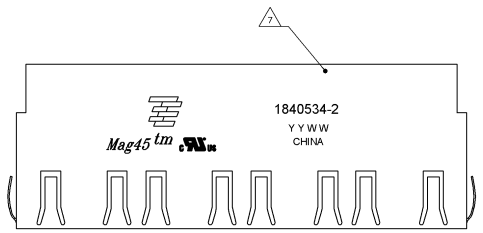


THIS DRAWING IS UNCLASSIFIED  
 UNLESS INDICATED OTHERWISE  
 BY THE ELECTRONICS CORPORATION  
 ALL RIGHTS RESERVED

REV	DATE	REVISIONS	BY	CHK	APP
AA	22				
C	ECO-09-012219		RAKJSDM	VL	LR

MECHANICAL:



1X4 SUGGESTED PANEL CUTOUT

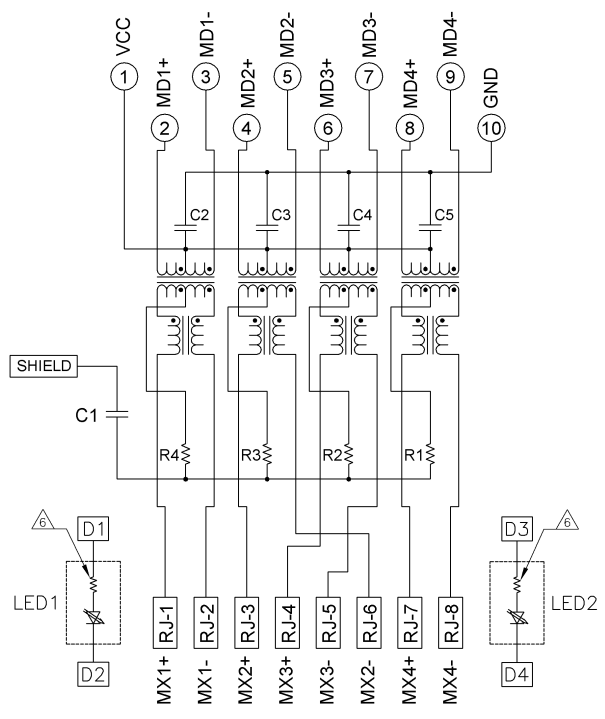
- △ MATERIALS:  
 HOUSING - THERMOPLASTIC PET POLYESTER FLAMMABILITY RATING UL 94V-0  
 SHIELD - .008" THICK, C26800 BRASS PREPLATED WITH 50µinch SEMI-BRIGHT NICKEL. SOLDER TABS POST DIPPED WITH 100µinch MIN SACSOLDER  
 MOD JACK CONTACTS - .0157" x .018", PHOSPHOR BRONZE, 50µinch MIN OVERALL NICKEL UNDERPLATE, WITH SELECT 50µinch MIN HARD GOLD FINISH PLATE. SOLDER TAILS WITH 100µinch MIN MATTE TIN AND/OR SAC SOLDER DIP  
 LIGHT EMITTING DIODE(LED) - DIFFUSED EPOXY LENS, .020" x .020" CARBON STEEL WIREFRAME LEADS PREPLATED WITH 80µinch SILVER OVER 40µinch NICKEL UNDERPLATE OVER 40µinch COPPER UNDERPLATE, POST-PLATED WITH 100µinch MIN MATTE TIN AND/OR SAC SOLDER DIP OR PURE SOLDER DIP
- △ RJ45 JACK CAVITY CONFORMS TO FCC RULES AND REGULATIONS PART 68, SUB PART F.
- △ MAGNETICS  
 -APPLICATION: 10/100/1000 BASE-T, EXTENDED TEMPERATURE  
 -IMPEDANCE: 100 OHMS  
 -TURNS RATIO (CHIP CABLE): 1:1 ALL FOUR PAIRS  
 -OPEN CIRCUIT INDUCTANCE (OCL): 350nH MIN @100MHz, 0.1VRMS, 0mADC BIAS FROM -40°C TO +85°C, ALL FOUR PAIRS  
 -ALL FOUR PAIRS BI-DIRECTIONAL  
 -PERFORMANCE @ 25°C  
 INSERTION LOSS (IL): 1.1dB MAX FROM 0.5MHz TO 100MHz  
 RETURN LOSS (RL): 18dB MIN FROM 0.5MHz TO 4.0MHz  
 12-20LOG(f/80dB) MIN FROM 4.0MHz TO 100MHz  
 CROSSTALK ATTENUATION: 35dB MIN FROM 0.5MHz TO 4.0MHz  
 33-20LOG(f/50dB) MIN FROM 4.0MHz TO 100MHz  
 COMMON MODE REJECTION RATIO (CMRR): 30dB MIN FROM 0.5MHz TO 100MHz  
 -ISOLATION VOLTAGE: 2250VDC (MAX) FOR 60 SECONDS WITH A RISE TIME OF 500V/SEC AND WITH ALL PORTS CONNECTED.
- 4. OPERATING TEMPERATURE FROM -40°C TO +85°C
- △ INDICATED MAGNETIC CONNECTIONS ARE SYMMETRICAL AND SUPPORT AUTO-MOIX
- △ THE 250 OHM RESISTOR IS OPTIONAL, PLEASE SEE CHART FOR PRESENCE OR ABSENCE OF LED RESISTORS  
 IF LEDS WITHOUT 250 OHM RESISTOR, LEDS ARE DRIVEN WITH CONSTANT CURRENT AT APPROX 20 mA  
 LED COLOR: DOMINANT WAVELENGTH (ADI): GREEN 568 nm TYP @ IF=20 mA  
 FORWARD VOLTAGE (VF): GREEN 2.2V TYP @ IF=20 mA  
 DOMINANT WAVELENGTH (ADI): YELLOW 588 nm TYP @ IF=20 mA  
 FORWARD VOLTAGE (VF): YELLOW 2.1V TYP @ IF=20 mA  
 IF LEDS WITH BUILT-IN RESISTOR, LEDS ARE DRIVEN WITH 5V VOLTAGE AND THE MAX OPERATING CURRENT IS 20mA  
 LED COLOR: DOMINANT WAVELENGTH (ADI): GREEN 568 nm TYP @ VF=5V  
 FORWARD CURRENT (IF): GREEN 12mA TYP @ VF=5V  
 DOMINANT WAVELENGTH (ADI): YELLOW 588 nm TYP @ VF=5V  
 FORWARD CURRENT (IF): YELLOW 13mA TYP @ VF=5V
- △ TYCO ELECTRONICS LOGO, PART NUMBER, DATE CODE, COUNTRY OF ORIGIN AND AGENCY APPROVAL MARKING IN APPROXIMATE LOCATION SHOWN
- 8. THESE PARTS ARE RECOMMENDED FOR WAVE SOLDERING PROCESS, PREHEAT TEMPERATURE IS 120°C TO 160°C, 120 SECONDS TO 180 SECONDS, PEAK WAVE SOLDERING TEMPERATURE IS 260°C MAX, 10 SECONDS MAX.

LED	250 OHMS RESISTOR	LED	250 OHMS RESISTOR	PART NUMBER
GREEN	YES	GREEN	YES	1-1840534-1
YELLOW	NO	YELLOW	NO	1-1840534-0
GREEN	NO	YELLOW	NO	1840534-9
GREEN	NO	GREEN	NO	1840534-8
GREEN	NO	GREEN	NO	1840534-7
GREEN/YELLOW	NO	GREEN/YELLOW	NO	1840534-6
GREEN/YELLOW	NO	GREEN	NO	1840534-5
GREEN/YELLOW	NO	GREEN	YES	1840534-4
YELLOW	YES	YELLOW	YES	1840534-3
YELLOW	YES	GREEN	YES	1840534-2
GREEN	YES	YELLOW	YES	1840534-1

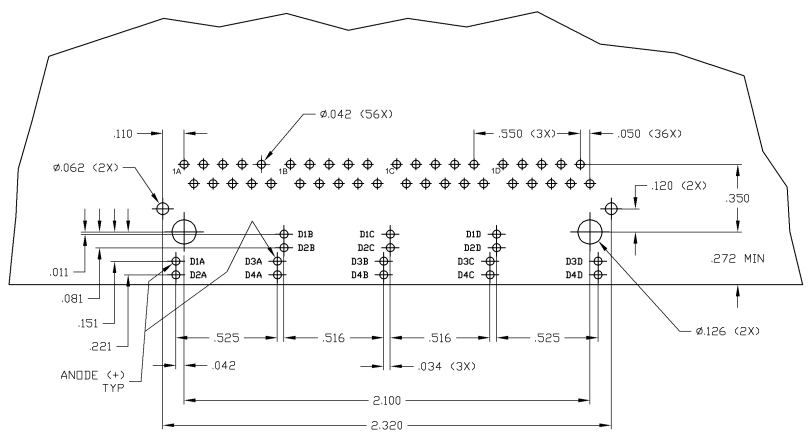
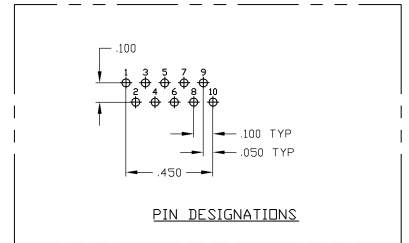
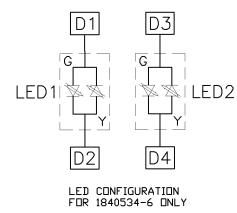
DESCRIPTION	REV	DATE	BY	CHK	APP
1X4 MAG45(TM) MODULAR JACK/STAB DOWN 4GB/ETP1 GIGABIT CIRCUIT (TO PIN HORIZONTAL), SHIELDED, WITH LEADS					
CUSTOMER DRAWING					

ELECTRICAL:

4G06ETP1 GIGABIT CIRCUIT 3 5



R1-R4=75 OHMS,1/16W,5% RESISTORS  
 C1=1000 pF, 2KV DECOUPLING CAPACITOR  
 C2-C5=0.1uF,5%,50V,X7R,CAPACITORS



SUGGESTED PCB LAYOUT  
(Component Side)

THIS DRAWING IS A CONTROLLED DOCUMENT.		REV: AA	DATE: 2/22	BY:    APPR:	Yeo Electronics Corporation Chengde, China
DESIGNER: J. J. J. J.	DATE: 2/22	REV: AA	DATE: 2/22	BY:    APPR:	Yeo Electronics Corporation Chengde, China
DESCRIPTION: 4G06ETP1 GIGABIT CIRCUIT (10 PIN HORIZONTAL), SHIELDED, WITH LEADS	SIZE: 108-2100	SCALE: 1:1	SHEET: 2	TOTAL SHEETS: 2	RESTRICTED TO:
DATE: 2/22	BY:    APPR:	REV: AA	DATE: 2/22	BY:    APPR:	RESTRICTED TO:
CUSTOMER DRAWING	SCALE: 1:1	SHEET: 2	TOTAL SHEETS: 2	REV: AA	RESTRICTED TO: