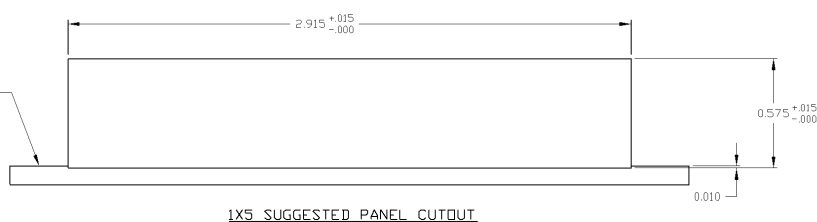
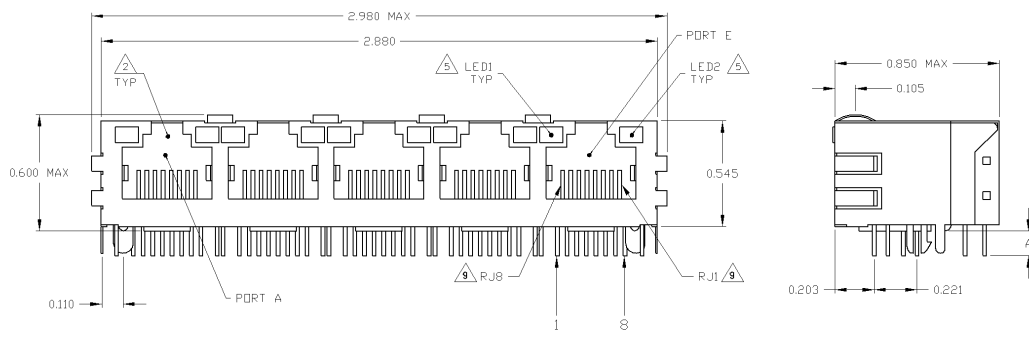
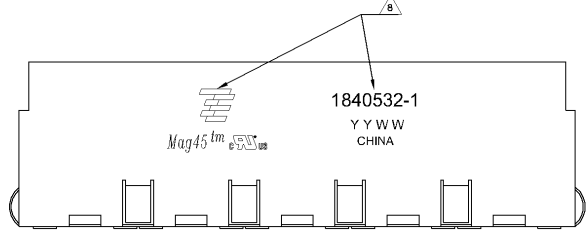


MECHANICAL:



1X5 SUGGESTED PANEL CUTOUT

- △ MATERIALS:
  - HOUSING - THERMOPLASTIC PET POLYESTER FLAMMABILITY RATING UL 94V-0
  - SHIELD - 0.010" THICK C26800 BRASS PREPLATED WITH 50μINCH MIN SEM-BRIGHT NICKEL
  - SOLDER TABS POST DIPPED WITH 100μINCH MIN SAC SOLDER
  - MOD JACK CONTACTS - 0.015" X 0.018" PHOSPHOR BRONZE, 50μINCH MIN OVERALL NICKEL UNDERPLATE WITH SELECT 50μINCH MIN HARD GOLD FINISH PLATE. SOLDER TAILS WITH 100μINCH MIN MATTE TIN AND/OR SAC SOLDER DIP
  - LIGHT EMITTING DIODE(LED) - DIFFUSED EPOXY LENS, 0.420" X 0.420" CARBON STEEL WIREFRAME LEADS PRE-PLATED WITH 80μINCH SILVER OVER 40μINCH NICKEL UNDERPLATE OVER 40μINCH COPPER UNDERPLATE. POST-PLATED WITH 100μINCH MIN MATTE TIN AND/OR SAC SOLDER DIP OR PURE TIN SOLDER DIP
- △ RJ45 JACK CAVITY CONFORMS TO FCC RULES AND REGULATIONS PART 48, SUB PART F.
- △ MAGNETICS
  - APPLICATION 10/100 BASE-T
  - IMPEDANCE 100 OHMS
  - TURNS RATIO (CHP- CABLE) TX = 11, RX = 11
  - OPEN CIRCUIT INDUCTANCE (OCL) 350nH MIN @100MHz, 0.1VRMS, 8mA DC BIAS FROM 0°C TO 70°C, TX AND RX
  - PERFORMANCE @ 25°C
    - INSERTION LOSS (IL): 1.5dB MAX FROM 0.5MHz TO 100MHz
    - RETURN LOSS (RL): 18dB MIN FROM 0.5MHz TO 30MHz
    - 18-20 LOG(F/50)dB MIN FROM 30 MHz TO 60MHz
    - 12dB MIN FROM 60 MHz TO 80MHz
    - CROSSTALK ATTENUATION 35dB MIN FROM 0.5MHz TO 40MHz
    - 33-20 LOG(F/50)dB MIN FROM 4.0 MHz TO 100MHz
    - COMMON MODE REJECTION RATIO (CMRR): 30dB MIN FROM 0.5MHz TO 100MHz
  - ISOLATION VOLTAGE- COMPLIES WITH IEEE802.3 2002, PARA 23.5.1.1 ITEM b.

- 4. OPERATING TEMPERATURE FROM 0°C TO +70°C.
- △ THE 250 OHM LED RESISTORS ARE OPTIONAL. PLEASE SEE CHART FOR PRESENCE OR ABSENCE OF LED RESISTORS. IF THE LED WITHOUT 250 OHM RESISTORS, LED IS DRIVEN WITH CONSTANT CURRENT AT APPROX 20mA.
  - LED COLOR: DOMINANT WAVELENGTH (DD): GREEN 568 nm TYP. @ IF=20mA
  - FORWARD VOLTAGE (VF): GREEN 2.2V TYP. @ IF=20mA
  - DOMINANT WAVELENGTH (DD): YELLOW 588 nm TYP. @ IF=20mA
  - FORWARD VOLTAGE (VF): YELLOW 2.1V TYP. @ IF=20mA
  - DOMINANT WAVELENGTH (DD): ORANGE 605 nm TYP. @ IF=20mA
  - FORWARD VOLTAGE (VF): ORANGE 2.05V TYP. @ IF=20mA
- IF THE LED WITH 250 OHM RESISTORS, LED IS DRIVEN WITH 5V VOLTAGE AND THE MAX OPERATING CURRENT IS 20mA.
  - LED COLOR: DOMINANT WAVELENGTH (DD): GREEN 568 nm TYP. @ VF=5V
  - FORWARD CURRENT (IF): GREEN 12 mA TYP. @ VF=5V
  - DOMINANT WAVELENGTH (DD): YELLOW 588 nm TYP. @ VF=5V
  - FORWARD CURRENT (IF): YELLOW 13 mA TYP. @ VF=5V
- △ INDICATED MAGNETIC CONNECTIONS ARE SYMMETRICAL AND SUPPORT AUTO-MIX.
- 7. THESE PARTS ARE RECOMMENDED FOR WAVE SOLDERING PROCESS, PEAK WAVE SOLDERING TEMPERATURE IS 265°C MAX, 10 SECONDS MAX.
- △ TYCO ELECTRONICS LOGO, PART NUMBER, DATE CODE, COUNTRY OF ORIGIN AND AGENCY APPROVAL MARKING IN APPROXIMATE LOCATION SHOWN.
- △ CONTACT LUBRICANT APPLIED IN MATING AREA.

DIM	"A"	LED1	250 OHMS RESISTOR	LED2	250 OHMS RESISTOR	PART NUMBER
0.145±0.010	GREEN	YES	GREEN	YES	6-1840532-1	
0.110±0.010	GREEN	YES	YELLOW	YES	2-1840532-1	
0.145±0.010	YELLOW	NO	YELLOW	NO	1-1840532-0	
0.145±0.010	YELLOW	NO	GREEN	NO	1840532-9	
0.145±0.010	GREEN	NO	YELLOW	NO	1840532-8	
0.145±0.010	GREEN	NO	GREEN	NO	1840532-7	
0.145±0.010	GREEN/YELLOW	NO	GREEN/YELLOW	NO	1840532-6	
0.145±0.010	GREEN/YELLOW	NO	GREEN	NO	1840532-5	
0.145±0.010	GREEN/YELLOW	NO	GREEN	NO	1840532-4	
0.145±0.010	YELLOW	YES	YELLOW	YES	1840532-3	
0.145±0.010	YELLOW	YES	GREEN	YES	1840532-2	
0.145±0.010	GREEN	YES	YELLOW	YES	1840532-1	

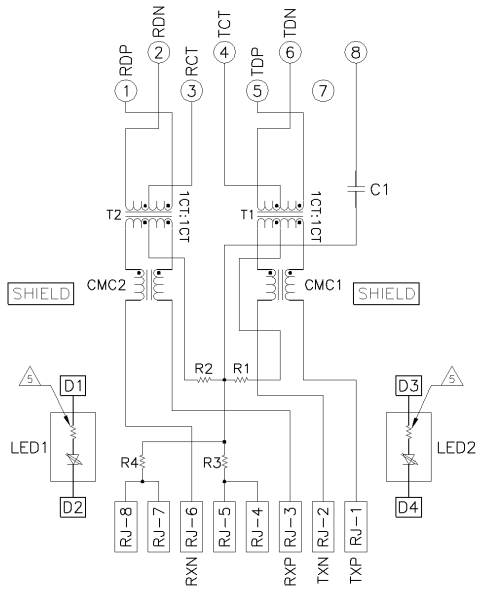
THIS DRAWING IS A CONTROLLED DOCUMENT. CLOUD ZINC

REV	DATE	BY	CHKD	APP'D	DESCRIPTION
AA	22				1X5 MAG45(TM) MODULAR JACK WITH LEDS WITH LUBE

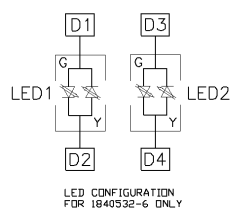
726 10/100 Base-T CIRCUIT, SHIELDED.  
 SEE USE OR INSTRUCTIONS FOR LUBE

CUSTOMER DRAWING  
 00779-1840532  
 NTS 1 2 D

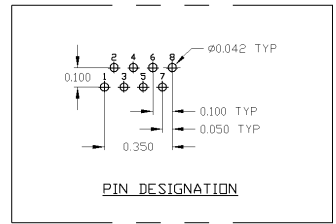
726 10/100 BASE-T CIRCUIT



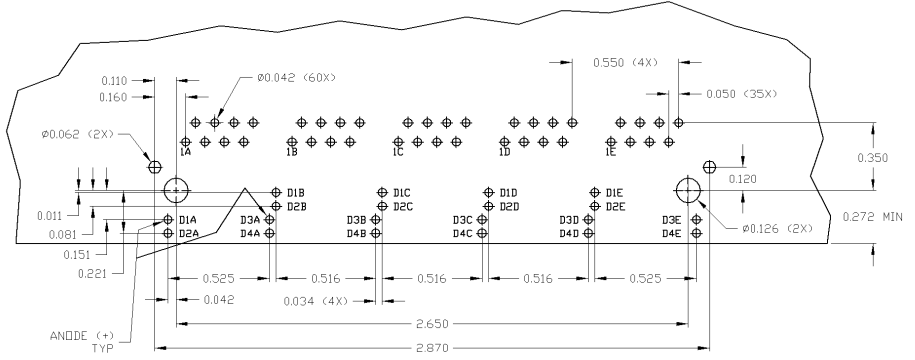
R1-R4=75 OHMS, 1/16W, 5% RESISTORS.  
 C1=1000 pF, 2kV CAPACITOR.



LED CONFIGURATION FOR 1840532-6 ONLY



PIN DESIGNATION



SUGGESTED PCB LAYOUT (Component Side)

THIS DRAWING IS A CONTROLLED DOCUMENT		REV. 22	DATE	BY	APP. BY	DATE	BY
DRAWING NO.		1840532-6	REV. NO.	22	DATE	BY	APP. BY
DESCRIPTION		726 10/100 BASE-T CIRCUIT, SHIELDED, WITH LEDs WITH LUBE	REV. NO.	22	DATE	BY	APP. BY
SHEET NO.		1	TOTAL SHEETS	2	DATE	BY	APP. BY
CUSTOMER DRAWING		1840532	REV. NO.	22	DATE	BY	APP. BY