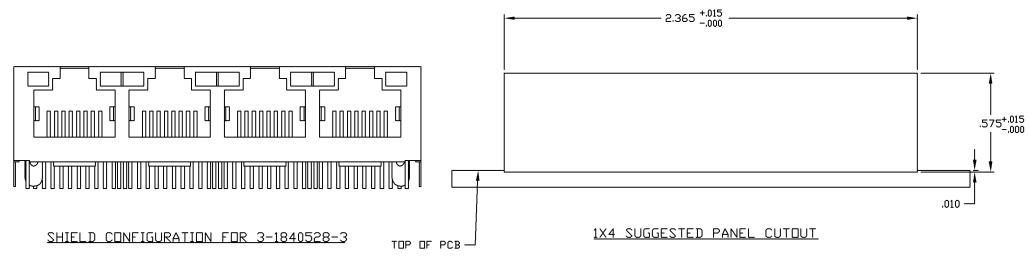
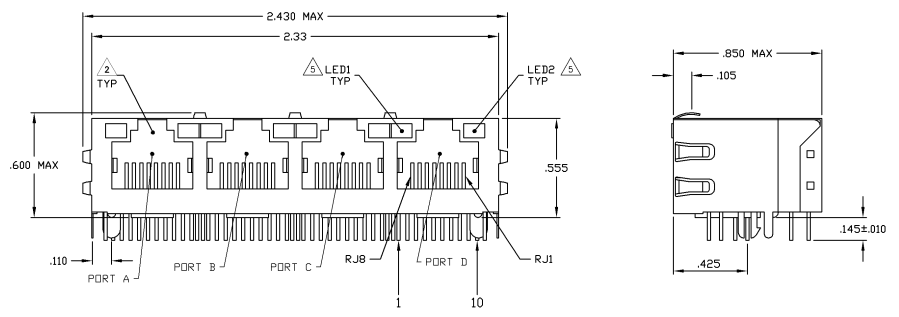
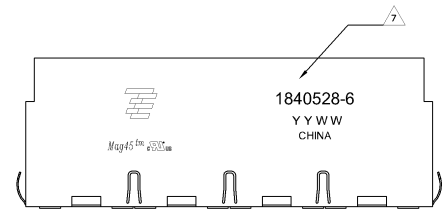


MECHANICAL:



MATERIALS:
 -HOUSING - THERMOPLASTIC PET POLYESTER FLAMMABILITY RATING UL 94V-0
 -SHIELD - .010" THICK, C26800 BRASS PREPLATED WITH 30μINCH MIN SEMI-BRIGHT NICKEL. SOLDER TABS POST DIPPED WITH 100μINCH MIN SAC SOLDER
 -MOD. JACK CONTACTS - 0.015" X 0.018" PHOSPHOR BRONZE, 50μINCH MIN OVERALL NICKEL UNDERPLATE WITH SELECT 50μINCH MIN HARD GOLD FINISH PLATE
 -SOLDER TAILS WITH 100μINCH MIN MATTE TIN AND/OR SAC SOLDER DIP
 -LIGHT EMITTING DIODE(LEDS) - DIFFUSED EPOXY LENS, 0.20" X 0.20" CARBON STEEL WIREFRAME LEADS PRE-PLATED WITH 85μINCH SILVER OVER 40μINCH NICKEL UNDERPLATE OVER 40μINCH COPPER UNDERPLATE. POST-PLATED WITH 100μINCH MIN MATTE TIN AND/OR SAC SOLDER DIP OR PURE TIN SOLDER DIP

MAGNETICS
 -APPLICATION: 10/100/1000 BASE-T
 -IMPEDANCE: 100 OHMS
 -TURNS RATIO (CHP LABEL): 1:1 ALL FOUR PAIRS
 -OPEN CIRCUIT INDUCTANCE (OCL): 350nH MIN @100MHz, 0.1VRMS, 8mA DC, BIAS FROM 0°C TO 70°C, ALL FOUR PAIRS
 -ALL FOUR PAIRS BI-DIRECTIONAL
 -PERFORMANCE @ 25°C
 -INSERTION LOSS (IL): 1.1dB MAX FROM 0.5MHz TO 100MHz
 -RETURN LOSS (RL): 18dB MIN FROM 0.5MHz TO 100MHz
 -12-26LOG(f)/80dB MIN FROM 4.0MHz TO 100MHz
 -CROSS TALK ATTENUATION: 35dB MIN FROM 0.5MHz TO 4.0MHz
 -33-20LOG(f)/50dB MIN FROM 4.0MHz TO 100MHz
 -COMMON MODE REJECTION RATIO (CMRR): 30dB MIN FROM 0.5MHz TO 100MHz
 -ISOLATION VOLTAGE: COMPLEYS WITH IEEE802.3 2002, PARA 4.0.6.11, ITEM L

OPERATING TEMPERATURE: FROM 0°C TO +70°C

THE 250 OHM LED RESISTORS ARE OPTIONAL. PLEASE SEE CHART FOR PRESENCE OR ABSENCE OF LED RESISTORS. IF THE LED WITHOUT 250 OHM RESISTORS, LED IS DRIVEN WITH CONSTANT CURRENT AT APPROX 20mA

LED COLOR: DOMINANT WAVELENGTH (D): GREEN 568 nm TYP. @ IF=20mA
 FORWARD VOLTAGE (VF): GREEN 2.2V TYP. @ IF=20mA
 DOMINANT WAVELENGTH (D): YELLOW 588 nm TYP. @ IF=20mA
 FORWARD VOLTAGE (VF): YELLOW 2.1V TYP. @ IF=20mA
 DOMINANT WAVELENGTH (D): ORANGE 605 nm TYP. @ IF=20mA
 FORWARD VOLTAGE (VF): ORANGE 2.0V TYP. @ IF=20mA

IF THE LED WITH 250 OHM RESISTORS, LED IS DRIVEN WITH 5V VOLTAGE AND THE MAX OPERATING CURRENT IS 20mA

LED COLOR: DOMINANT WAVELENGTH (D): GREEN 568 nm TYP. @ VF=5V
 FORWARD CURRENT (IF): GREEN 12 mA TYP. @ VF=5V
 DOMINANT WAVELENGTH (D): YELLOW 588 nm TYP. @ VF=5V
 FORWARD CURRENT (IF): YELLOW 13 mA TYP. @ VF=5V

THE MAGNETICS ARE SYMMETRICAL TO SUPPORT AUTO-MDI/MDIX

TYCO ELECTRONICS LOGO, PART NUMBER, DATE CODE, COUNTRY OF ORIGIN AND AGENCY APPROVAL MARKING IN APPROXIMATE LOCATION SHOWN

THESE PARTS ARE RECOMMENDED FOR WAVE SOLDERING PROCESS. PREHEAT TEMPERATURE IS 120°C TO 160°C, 120 SECONDS TO 180 SECONDS. PEAK WAVE SOLDERING TEMPERATURE IS 260°C MAX, 10 SECONDS MAX.

NO	GREEN/ORANGE	NO	YELLOW	NO	3-1840528-3
YES	GREEN	YES	GREEN	YES	1-1840528-1
YES	YELLOW	NO	YELLOW	NO	1-1840528-0
YES	YELLOW	NO	GREEN	NO	1840528-9
YES	GREEN	NO	YELLOW	NO	1840528-8
YES	GREEN	NO	GREEN	NO	1840528-7
YES	GREEN/YELLOW	NO	GREEN/YELLOW	NO	1840528-6
YES	GREEN/YELLOW	NO	GREEN	NO	1840528-5
YES	GREEN/YELLOW	NO	GREEN	YES	1840528-4
YES	YELLOW	YES	YELLOW	YES	1840528-3
YES	YELLOW	YES	GREEN	YES	1840528-2
YES	GREEN	YES	YELLOW	YES	1840528-1

NO	GREEN/ORANGE	NO	YELLOW	NO	3-1840528-3
YES	GREEN	YES	GREEN	YES	1-1840528-1
YES	YELLOW	NO	YELLOW	NO	1-1840528-0
YES	YELLOW	NO	GREEN	NO	1840528-9
YES	GREEN	NO	YELLOW	NO	1840528-8
YES	GREEN	NO	GREEN	NO	1840528-7
YES	GREEN/YELLOW	NO	GREEN/YELLOW	NO	1840528-6
YES	GREEN/YELLOW	NO	GREEN	NO	1840528-5
YES	GREEN/YELLOW	NO	GREEN	YES	1840528-4
YES	YELLOW	YES	YELLOW	YES	1840528-3
YES	YELLOW	YES	GREEN	YES	1840528-2
YES	GREEN	YES	YELLOW	YES	1840528-1

GROUND TABS: LED1 250 OHMS RESISTOR, LED2 250 OHMS RESISTOR, PART NUMBER

THIS DRAWING IS A CONTROLLED DOCUMENT	REV. 00	DATE	08/08/2008	BY	AA
DESIGNED BY	APPROVED BY	DATE	08/08/2008	BY	AA
DRAWN BY	DATE	08/08/2008	BY	AA	
CHECKED BY	DATE	08/08/2008	BY	AA	
SCALE	1:1				
CUSTOMER DRAWING	NO				

