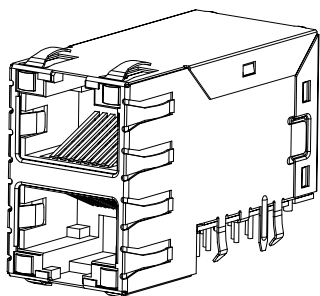


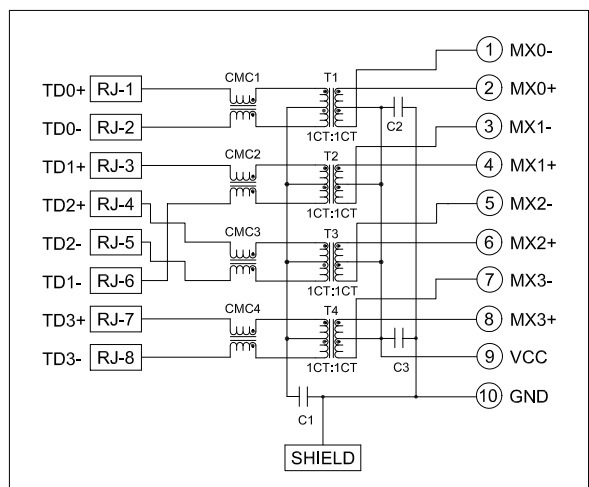
REV	DATE	DESCRIPTION	BY	CHK	APP
AA	00				
C		REV PER EDC-09-002676	28APR2009	RG	RAO
D		ECO-10-022821	23AUG2011	THS	KZ



SCALE 5:1

S8G17 GIGABIT CIRCUIT

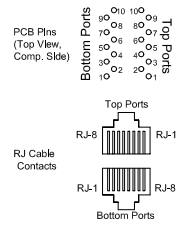
Top and Bottom Ports



- 1. C1 = 1000pF, 2KV, 10%, X7R
- 2. C2, C3 = 470pF, 10%, 50V

Pin Designations

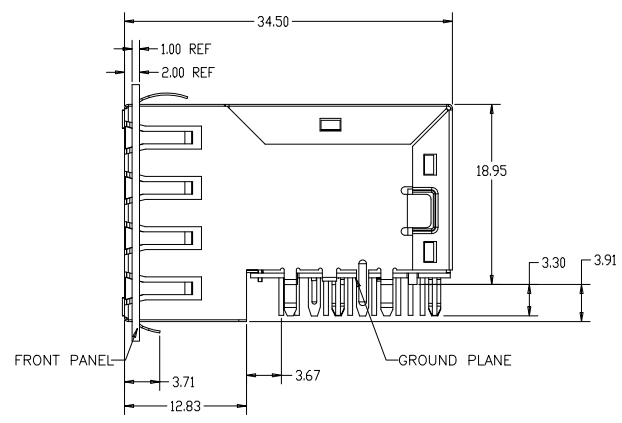
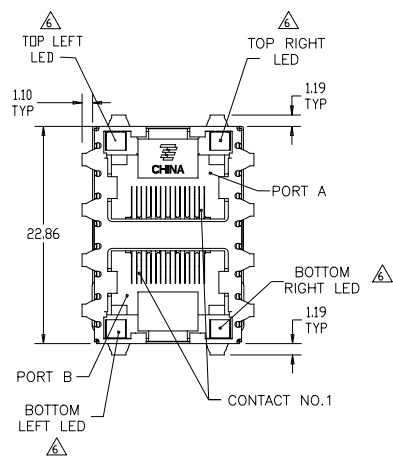
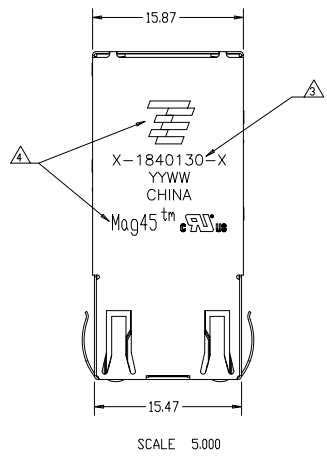
(Repeat for each vertical pair of ports.)



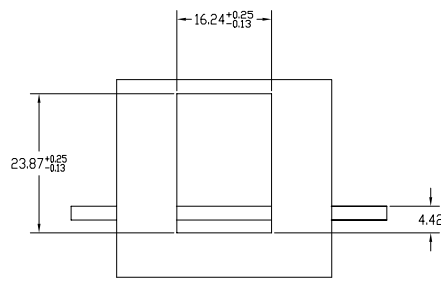
- 1 MATERIALS:**
- HOUSING: THERMOPLASTIC, BLACK, FLAMMABILITY RATING UL 94V-0.
 - SHIELD: BRASS, PREPLATED WITH 0.76um MIN SEMI-BRIGHT NICKEL, POST DIPPED WITH 2.54um MIN SAC SOLDER ON SOLDER TAILS.
 - CONTACTS: PHOSPHOR BRONZE, PLATED WITH 1.27um MIN OVERALL NICKEL UNDERPLATE, SELECTIVE 1.27um MIN GOLD AT MATING INTERFACE AND 2.54um MIN MATTE TIN ON SOLDER TAILS.
 - LED: DIFFUSED EPOXY LENS, CARBON STEEL LEAD FRAME LEADS, PREPLATED WITH 2.03um MIN SILVER OVER 1.02um MIN NICKEL OVER 1.02um MIN COPPER UNDERPLATE, POST PLATED WITH 2.54um MIN MATTE TIN AND/OR 2.54um MIN SAC SOLDER DIP OR PURE TIN SOLDER DIP.
- MAGNETICS:**
- APPLICATION: 10/100/1000 BASE-T
 - IMPEDANCE: 100ohm
 - TURNS RATIO (CHIP:CABLE): 1:1 ALL FOUR PAIRS
 - OPEN CIRCUIT INDUCTANCE (OCL): 350uH MIN @100KHz, 0.1VRMS, 8mA DC BIAS FROM 0°C TO 70°C, ALL FOUR PAIRS
 - ALL FOUR PAIRS BI-DIRECTIONAL
 - PERFORMANCE @25°C:
- INSERTION LOSS (IL): 1.1dB MAX FROM 0.5MHz TO 100MHz
 RETURN LOSS (RL): 18dB MIN FROM 0.5MHz TO 40MHz
 12-20LOG(f/80)dB MIN FROM 40.1MHz TO 100MHz
 CROSSTALK ATTENUATION: 35dB MIN FROM 0.5MHz TO 40MHz
 33-20LOG(f/50)dB MIN FROM 40.1MHz TO 100MHz
 COMMON MODE REJECTION RATIO (CMRR):
 30dB MIN FROM 0.5MHz TO 100MHz
- ISOLATION VOLTAGE: 2250VDC (MAX) FOR 60 SECONDS WITH A RISE TIME OF 500V/SEC AND WITH ALL PORTS CONNECTED.
- MAGNETICS:**
- APPLICATION: 10/100/1000 BASE-T
 - IMPEDANCE: 100ohm
 - TURNS RATIO (CHIP:CABLE): 1:1 ALL FOUR PAIRS
 - OPEN CIRCUIT INDUCTANCE (OCL): 350uH MIN @100KHz, 0.1VRMS, 8mA DC BIAS FROM 0°C TO 70°C, ALL FOUR PAIRS
 - ALL FOUR PAIRS BI-DIRECTIONAL
 - PERFORMANCE @25°C:
- INSERTION LOSS (IL): 1.1dB MAX FROM 0.5MHz TO 100MHz
 RETURN LOSS (RL): 18dB MIN FROM 0.5MHz TO 40MHz
 12-20LOG(f/80)dB MIN FROM 40.1MHz TO 100MHz
 CROSSTALK ATTENUATION: 35dB MIN FROM 0.5MHz TO 40MHz
 33-20LOG(f/50)dB MIN FROM 40.1MHz TO 100MHz
 COMMON MODE REJECTION RATIO (CMRR):
 30dB MIN FROM 0.5MHz TO 100MHz
- ISOLATION VOLTAGE: 2250VDC (MAX) FOR 60 SECONDS WITH A RISE TIME OF 500V/SEC AND WITH ALL PORTS CONNECTED.
- MAGNETICS:**
- APPLICATION: 10/100/1000 BASE-T
 - IMPEDANCE: 100ohm
 - TURNS RATIO (CHIP:CABLE): 1:1 ALL FOUR PAIRS
 - OPEN CIRCUIT INDUCTANCE (OCL): 350uH MIN @100KHz, 0.1VRMS, 8mA DC BIAS FROM 0°C TO 70°C, ALL FOUR PAIRS
 - ALL FOUR PAIRS BI-DIRECTIONAL
 - PERFORMANCE @25°C:
- INSERTION LOSS (IL): 1.1dB MAX FROM 0.5MHz TO 100MHz
 RETURN LOSS (RL): 18dB MIN FROM 0.5MHz TO 40MHz
 12-20LOG(f/80)dB MIN FROM 40.1MHz TO 100MHz
 CROSSTALK ATTENUATION: 35dB MIN FROM 0.5MHz TO 40MHz
 33-20LOG(f/50)dB MIN FROM 40.1MHz TO 100MHz
 COMMON MODE REJECTION RATIO (CMRR):
 30dB MIN FROM 0.5MHz TO 100MHz
- ISOLATION VOLTAGE: 2250VDC (MAX) FOR 60 SECONDS WITH A RISE TIME OF 500V/SEC AND WITH ALL PORTS CONNECTED.
- MAGNETICS:**
- APPLICATION: 10/100/1000 BASE-T
 - IMPEDANCE: 100ohm
 - TURNS RATIO (CHIP:CABLE): 1:1 ALL FOUR PAIRS
 - OPEN CIRCUIT INDUCTANCE (OCL): 350uH MIN @100KHz, 0.1VRMS, 8mA DC BIAS FROM 0°C TO 70°C, ALL FOUR PAIRS
 - ALL FOUR PAIRS BI-DIRECTIONAL
 - PERFORMANCE @25°C:
- INSERTION LOSS (IL): 1.1dB MAX FROM 0.5MHz TO 100MHz
 RETURN LOSS (RL): 18dB MIN FROM 0.5MHz TO 40MHz
 12-20LOG(f/80)dB MIN FROM 40.1MHz TO 100MHz
 CROSSTALK ATTENUATION: 35dB MIN FROM 0.5MHz TO 40MHz
 33-20LOG(f/50)dB MIN FROM 40.1MHz TO 100MHz
 COMMON MODE REJECTION RATIO (CMRR):
 30dB MIN FROM 0.5MHz TO 100MHz
- ISOLATION VOLTAGE: 2250VDC (MAX) FOR 60 SECONDS WITH A RISE TIME OF 500V/SEC AND WITH ALL PORTS CONNECTED.

ULWG	ULWG/YELLOW	ULWG	ULWG/YELLOW	9-1840130-5
GREEN	YELLOW/GREEN	GREEN	YELLOW/GREEN	4-1840130-5
GREEN	GREEN/YELLOW	GREEN	GREEN/YELLOW	1840130-3
GREEN	YELLOW	GREEN	YELLOW	1840130-2
GREEN	GREEN	GREEN	GREEN	1840130-1

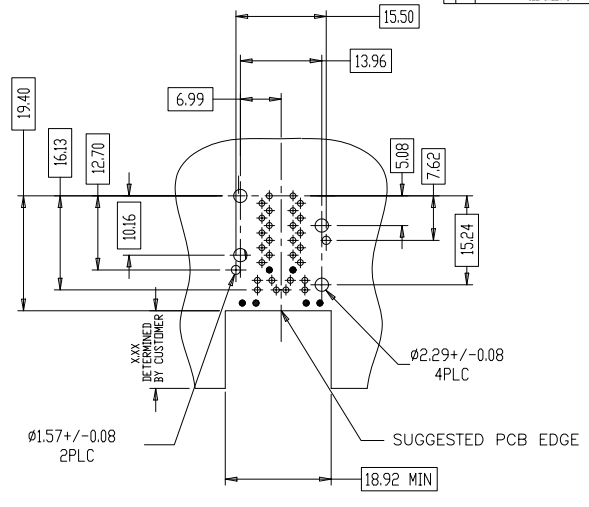
TOP LEFT LED	TOP RIGHT LED	BOTTOM LEFT LED	BOTTOM RIGHT LED	PART NUMBER



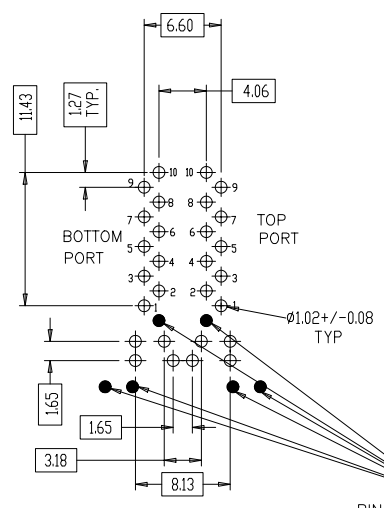
THIS DRAWING IS A CONTROLLED DOCUMENT		DATE LOG	DATE REVISE	Tyso Electronics Corporation Changshu, China	
REV. NO.	DATE	BY	REASON	NAME	DATE
AA	00			MAG45™ MIDDLE JACK 2X1 OFFSET SG67 GIGABIT CIRCUIT WITH LED 10 PIN VERTICAL	
APPROVAL	DESIGN	CHECK	RELEASE	DATE	REVISIONS BY
				A1	00773
CUSTOMER DRAWING		SCALE	5	SHEET	2
				TOTAL	4



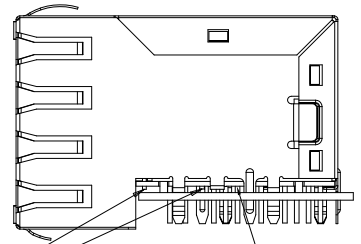
RECOMMENDED PANEL CUT-OUT



RECOMMENDED PC BOARD LAYOUT
VIEWED FROM COMPONENT SIDE



DETAIL G
SCALE: 2:1



ALL THE SIGNAL PINS MUST BE
SOLDERED WITH BOTTOM PCB

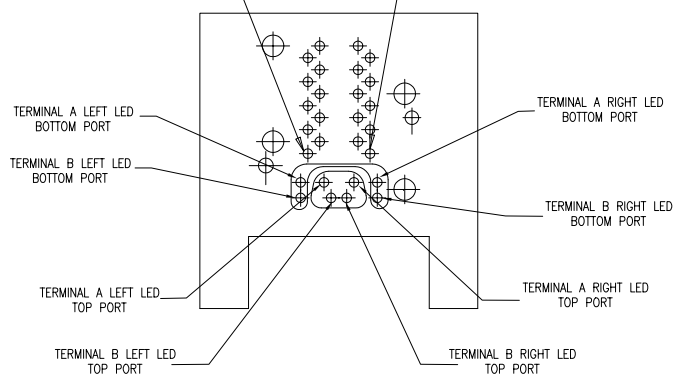
PIN #0 AND SOME LED PINS ARE STUB PINS WITH LENGTH SIMILAR TO PCB STANDOFF HEIGHT. PRECAUTIONS SHOULD BE TAKEN IN PCB DESIGN TO GUARD AGAINST SHORTING TRACES TO STUB PINS.

THIS DRAWING IS A CONTROLLED DOCUMENT THIS DRAWING IS UNCLASSIFIED EXCEPT FOR THE PORTION INDICATED OTHERWISE BY THIS ELECTRONIC CORPORATION. ALL RIGHTS RESERVED.		FILE NO. 28-F-06-06 REV. 00 DATE: 28-F-06-06 NAME: MAGACSTHO MIDDLE JACK, 2X1 OFFSET SR07 GIGABIT CIRCUIT WITH LED 10 PIN VERTICAL	Tyco Electronics Tyco Electronics Corporation Changshu China
EXPLODED ISOMETRIC SECTION PARTIAL OTHER	DRAWING NO. 1840130 REV. 00 DATE: 28-F-06-06 NAME: MAGACSTHO MIDDLE JACK, 2X1 OFFSET SR07 GIGABIT CIRCUIT WITH LED 10 PIN VERTICAL	SHEET 5 OF 4	CUSTOMER DRAWING

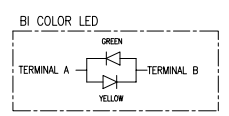
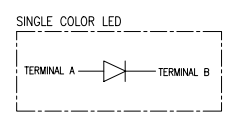
THIS DRAWING IS UNAPPROVED RECORDS FOR PURCHASE
 (C) COPYRIGHT © 2007 YUPO ELECTRONICS CORPORATION. ALL RIGHTS RESERVED.

REV	REF	REVISIONS	DATE	BY	APP'D
AA	00	DESCRIPTION			
		SEE SHEET 1			

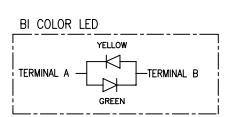
PIN 1 PORT B PIN 1 PORT A



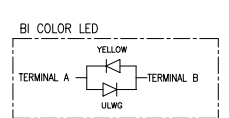
LED HOLE DESIGNATIONS
 VIEWED FROM COMPONENT SIDE



THE SCHEMATICS FOR 1840130-3



THE SCHEMATICS FOR 4-1840130-5



THE SCHEMATICS FOR 9-1840130-5

THIS DRAWING IS A CONTROLLED DOCUMENT		DATE	28-7-07-05	Yupo Electronics Corp. Japan Electronics Corporation	
REV		REV. LOG	28-7-07-05	Chongqing Yupo	
DATE		DATE	28-7-07-05	NAME	
DRAWN BY		DESIGNER		MAG45CTMO MOBILE JACK 2X1 OFFSET	
CHECKED BY		APP. DATE		S807 GIGABIT CIRCUIT WITH LED	
APPROVED BY		DATE		10 PIN VERTICAL	
REVISION		VERSION	A1	00773	©=1840130
CUSTOMER DRAWING		SCALE		SHEET	4 OF 4