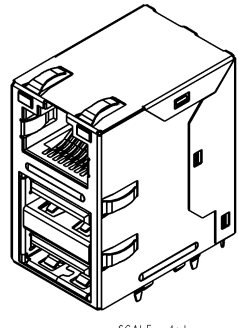
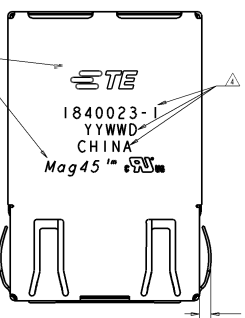


TYPE	DATE	BY	REVISION
ECO-09-00510A	09/08/08
ECO-09-013753
ECO-09-018836
ECO-11-014630

REV.	DATE	DESCRIPTION	BY	APP.
A	09/08/08	ECO-09-00510A
B	...	ECO-09-013753
C	...	ECO-09-018836
D	...	ECO-11-014630



SCALE 4:1

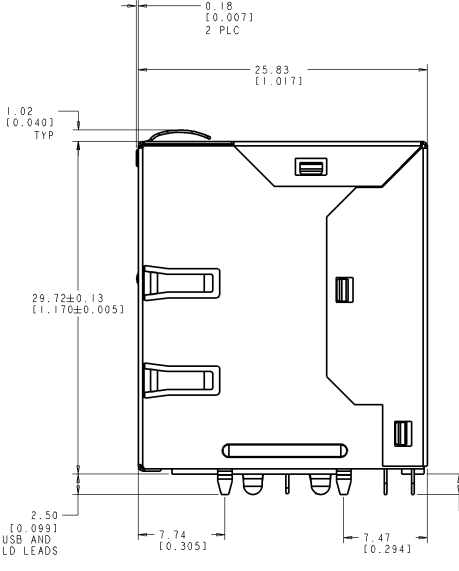
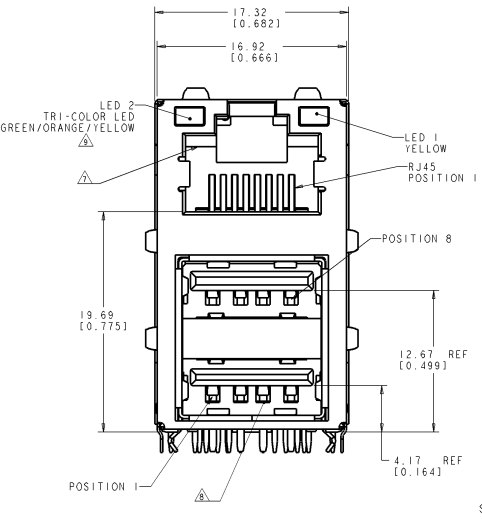
△ USB MATERIALS:
 SHELL: PHOSPHOR BRONZE
 HOUSING: THERMOPLASTIC, BLACK, FLAMMABILITY RATING UL94V-0.
 CONTACT: PHOSPHOR BRONZE WITH SELECTIVE GOLD PLATING
 SPRING CLIP: PHOSPHOR BRONZE

RJ45 MATERIALS:
 HOUSING: THERMOPLASTIC, BLACK, FLAMMABILITY RATING UL94V-0.
 SHIELD: BRASS, PREPLATED WITH 0.76μm SEMI-BRIGHT NICKEL.
 POST DIPPED WITH 2.54μm MIN SAC SOLDER ON SOLDER TAILS.
 CONTACTS: PHOSPHOR BRONZE, 0.30 mm THK, 1.22mm MIN OVERALL NICKEL UNDERPLATE WITH SELECT 0.76μm MIN GOLD AT MATING INTERFACE AND 2.54μm MIN MATTE TIN AND/OR SAC SOLDER ON SOLDER TAILS.

LED: DIFFUSED EPOXY LENS, 0.5 X 0.5 CARBON STEEL WIREFRAME
 LEADS PREPLATED WITH 2.03μm MIN SILVER OVER 1.02μm MIN NICKEL UNDERPLATE OVER 1.02μm COPPER UNDERPLATE, POST-PLATED WITH 2.54μm MIN MATTE TIN AND/OR SAC SOLDER DIP OR PURE TIN SOLDER DIP.

△ MAGNETICS:
 -APPLICATION: 10/100/1000 BASE-T
 -IMPEDANCE: 100 OHMS
 -TURNS RATIO(CHIP: CABLE): 1:1 ALL FOUR PAIRS
 -OPEN CIRCUIT INDUCTANCE(OCL): 350nH MIN @100kHz, 0.1 VRMS, 50mV BIAS FROM 0°C TO 20°C, ALL FOUR PAIRS
 -RISE TIME (10%-90%): 2.5ns TYPICAL;
 -ALL FOUR PAIRS BI-DIRECTIONAL
 -PERFORMANCE @ 25°C:
 INSERTION LOSS (IL): 1.1 dB MAX FROM 0.5MHz TO 100MHz;
 RETURN LOSS (RL): 18dB MIN FROM 0.5MHz TO 40MHz;
 12-20LOG(I/50)dB MIN FROM 40.1 MHz TO 100MHz
 CROSSTALK ATTENUATION: 35 dB MIN FROM 0.5 MHz TO 40 MHz;
 33-20LOG(I/50) dB MIN FROM 40.1 MHz TO 100 MHz
 COMMON MODE REJECTION RATIO (CMRR): 30dB MIN FROM 0.5MHz TO 100MHz;
 ISOLATION VOLTAGE: COMPLIES WITH IEEE802.3 2002, PARA 40.6.1.1, ITEM a and b.

3. OPERATING TEMPERATURE: 0°C TO +70°C.



△ PART NUMBER, DATE CODE AND COUNTRY OF ORIGIN TO BE LOCATED IN APPROXIMATE AREA SHOWN. DATE CODE: YYWD WHERE YY IS YEAR, WW IS WORK WEEK, D IS DAY OF WEEK, WITH SUNDAY=1

△ AGENCY APPROVAL LOGO AND TE CONNECTIVITY LOGO LOCATED IN APPROXIMATE AREA SHOWN.

△ RECOMMENDED PCB THICKNESS 1.5mm (.062") THICK. DATUM LOCATION AND DIMENSION TO BE ESTABLISHED BY CUSTOMER.

△ RJ45 CAVITY CONFORMS TO FCC RULES AND REGULATION PART 68 SUBPART F.

△ MATING INTERFACE COMPLIES WITH USB (UNIVERSAL SERIAL BUS) SPECIFICATION REV 2.0.

△ LED 2 WILL EMULATE "YELLOW" LIGHT WHEN BOTH GREEN AND ORANGE DIODES ARE DRIVEN AT CONSTANT CURRENT (20 mA RECOMMENDED) TO INDICATE THE THIRD COLOR STATE. LED COLOR: DOMINANT WAVELENGTH (λD): GREEN 568 nm TYP @ IF=20 mA FORWARD VOLTAGE (VF): GREEN 2.2V TYP @ IF=20 mA DOMINANT WAVELENGTH (λD): YELLOW 588 nm TYP @ IF=20 mA FOR LED1 FORWARD VOLTAGE (VF): YELLOW 2.1V TYP @ IF=20 mA FOR LED1 DOMINANT WAVELENGTH (λD): ORANGE 608 nm TYP @ IF=20 mA FORWARD VOLTAGE (VF): ORANGE 2.1V TYP @ IF=20 mA

10. THE PART IS COMPLIANT WITH BOTH WAVE SOLDERING PROCESS, PEAK SOLDERING TEMPERATURE 265 °C MAX, 10 SECONDS MAX, AND IR REFLOW SOLDERING PROCESS, PEAK SOLDERING TEMPERATURE 260 °C MAX DURATION TIME 10 SECONDS MAX, OVER 230 °C WITHIN 40-60 SECONDS.

1840023-1
PART NUMBER

TE CONNECTIVITY 1840023-1 MAG45™ DUAL USB W/LED PANEL GROUND SHIELD FOR REFLOW	1840023-1 PART NUMBER 100799 1840023
--	---

