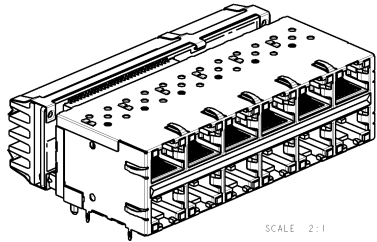
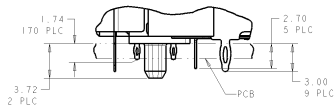
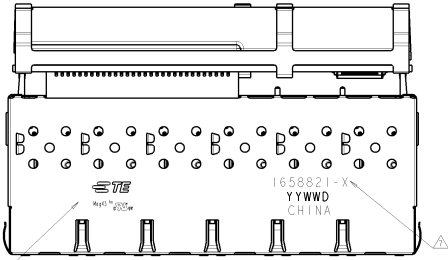


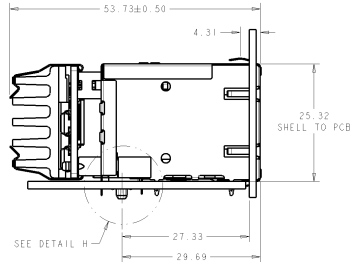
REV	DATE	DESCRIPTION	BY	CHK	APP
1	00				
2	00				
3	00				
4	00				
5	00				
6	00				
7	00				
8	00				
9	00				
10	00				



SCALE 2:1

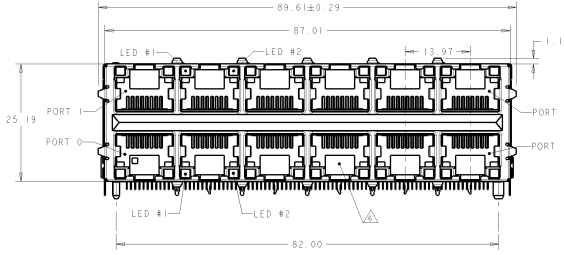


DETAIL H
PRESS FIT
SCALE 5:1

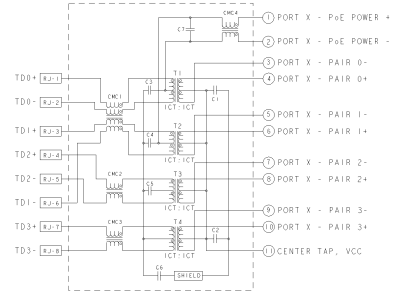


VIEW SHOWN
ASSEMBLED
TO PCB AND PANEL

SEE DETAIL H

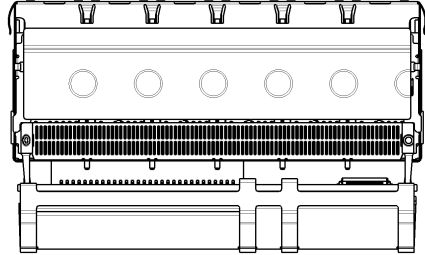


S6V22B GIGABIT POE CIRCUIT
TOP AND BOTTOM PORTS



C1-C2: 470pF, 100V, ±10%, X7R
C3-C5: 0.01µF, 500VDC (0505), ±10%
C6: 1000pF, 4kVDC (1805), ±10%
C7: 68nF, 100V, ±10%

X: PORT NUMBER
REFER TO THE TABLE ON SHEET 4
FOR PIN ASSIGNMENT DETAILS



- MATERIALS:**
HOUSING: BLACK THERMOPLASTIC, 94V-0.
SHIELD: COPPER ALLOY WITH TIN PLATE
CONTACTS: RJ45: PHOSPHOR BRONZE WITH 1.27µm MIN GOLD
AT MATING INTERFACE OVER 2.54µm NICKEL UNDERPLATE
CONTACTS, MOTHERBOARD HEADER: 0.125µm TIN PLATE OVER
2.54µm NICKEL
- MAGNETICS:**
-APPLICATION: 10/100/1000 BASE-T, PoE
-IMPEDANCE: 100 OHMS
-TURNS RATIO (CHIP-CABLE): TX = 1:1, RX = 1:1
-OPEN CIRCUIT INDUCTANCE (OCI): 350nH MIN @100kHz, 0.1VRMS,
80mADC BIAS FROM 0°C TO 50°C, TX AND RX
-DIELECTRIC ISOLATION VOLTAGE: 1500 VAC (1mA CUTOFF
CURRENT) FOR 60 SECONDS DURATION
-POE CURRENT: 350mADC MAX
-PERFORMANCE @ 25°C:
-INSERTION LOSS (IL): 1.3dB MAX FROM 0.5MHz TO 100MHz
-RETURN LOSS (RL): 18dB MIN FROM 0.5MHz TO 40MHz
-12-20LOG(|f/80|dB) MIN FROM 40.1MHz TO 100MHz
-CROSSTALK ATTENUATION: 33-20LOG(|f/50|dB) MIN FROM 1MHz TO 100MHz
-COMMON MODE REJECTION RATIO (CMRR): 30dB MIN FROM 1MHz TO 100MHz
3. LED IS DRIVEN WITH CURRENT AT APPROX 20 mA.
DOMINANT WAVELENGTH (λd): GREEN 568 nm TYP. AT IF=20mA,
FORWARD VOLTAGE (VF): GREEN 2.2V TYP. @ IF=20mA
DOMINANT WAVELENGTH (λd): YELLOW 588 nm TYP. AT IF=20mA,
FORWARD VOLTAGE (VF): YELLOW 2.1V TYP. @ IF=20mA
4. ALL DIMENSIONS NOMINAL UNLESS OTHERWISE STATED.
5. RECOMMENDED MINIMUM MOTHERBOARD PCB THICKNESS: 1.59 mm.
6. RJ45 PORT CONFORMS TO FCC RULES AND REGULATION PART 68 SUBPART F.
7. **TE CONNECTIVITY LOGO, PART NUMBER, DATE CODE, COUNTRY OF ORIGIN, AGENCY APPROVAL MARKING LOGO LOCATED IN THE APPROXIMATE AREA SHOWN. DATE CODE YY IS YEAR, WW IS WORK WEEK, D IS DAY OF WEEK, WITH SUNDAY=1.**
8. AIR FLOW OF 200LFM REQUIRED AT HEAT SINK.
9. THIS PART IS DESIGNED TO BE IN COMPLIANCE WITH IEEE 802.3af, DRAFT 4.4 DATED APRIL 10, 2003, AS A POE DEVICE, CONFIGURED PER THE ALTERNATE A MDI-X PINOUT.

LED #2	LED #1	DESCRIPTION	PART NUMBER
YEL/GRN	YEL/GRN	PRESS FIT	1658821-2
YEL/GRN	YEL/GRN	PRESS FIT	1658821-1

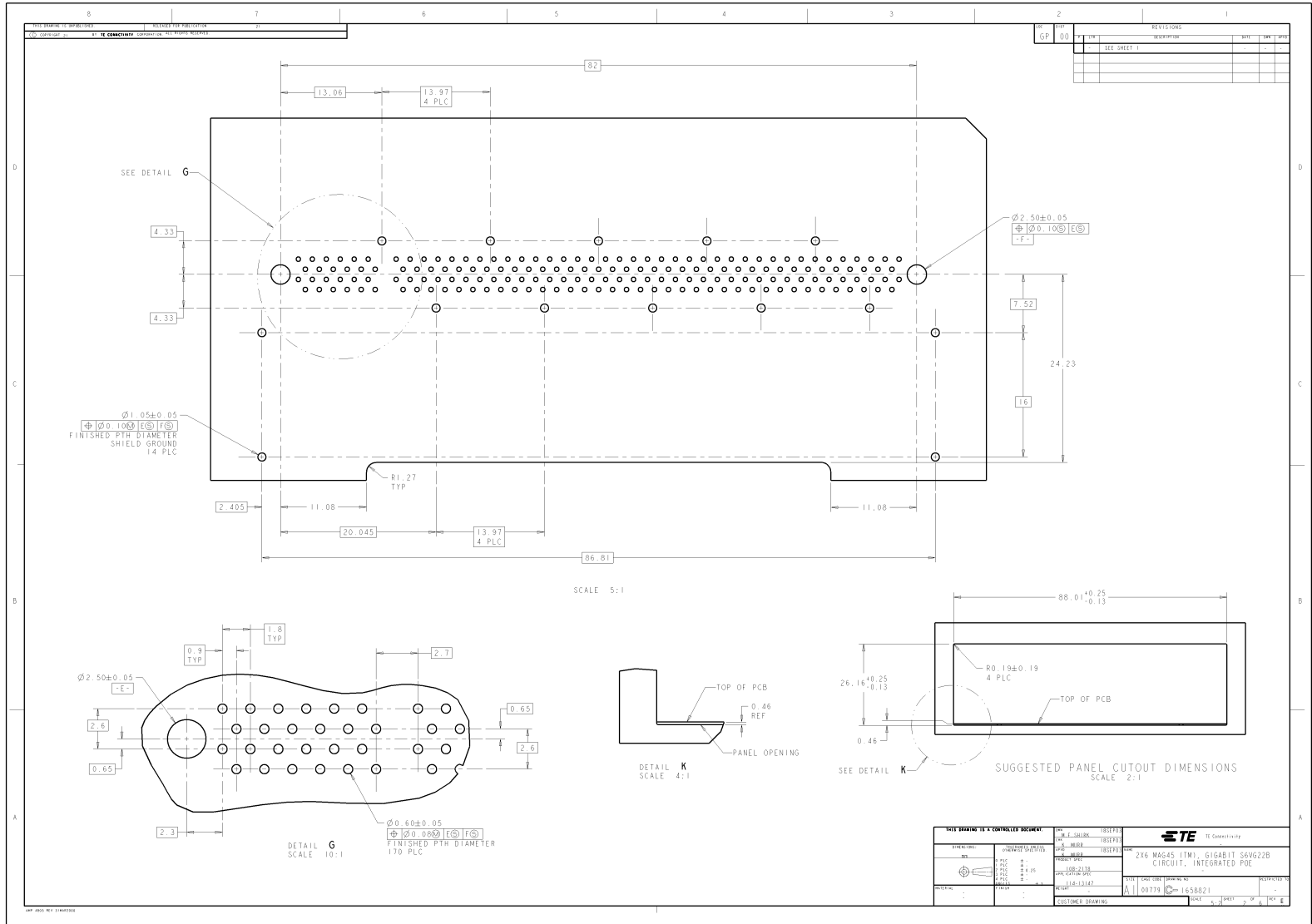
REV	DATE	DESCRIPTION	BY	CHK	APP
1	00				
2	00				
3	00				
4	00				
5	00				
6	00				
7	00				
8	00				
9	00				
10	00				

TE Connectivity
2X6 MAG45 (TM), GIGABIT S6V22B CIRCUIT, INTEGRATED POE

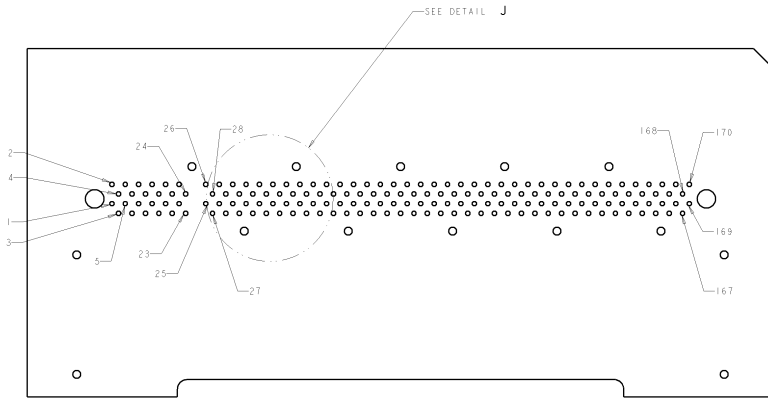
DATE CODE (DDMMYY)
112-10147

100799 © 1628821

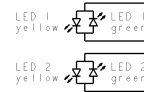
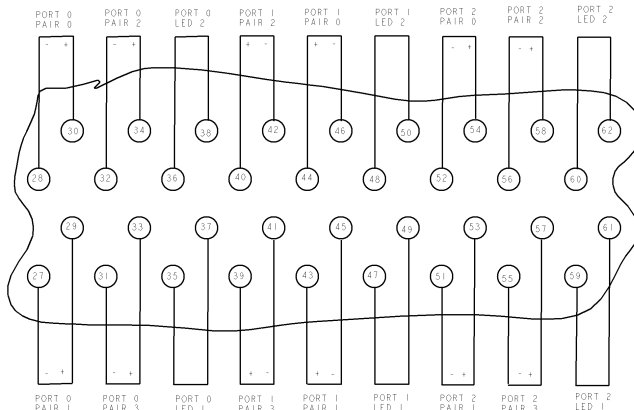
CUSTOMER DRAWING



REV. 00		REVISIONS			
NO.	DATE	DESCRIPTION	BY	CHK	APP
1		SEE SHEET 1			



SCALE 4:1



TYPICAL PATTERN FOR:

- PORT 0, 1
- PORT 2, 3
- PORT 4, 5
- PORT 6, 7
- PORT 8, 9
- PORT 10, 11

DETAIL J
SCALE 20:1

THIS DRAWING IS A CONTROLLED DOCUMENT CONTROLLED DOCUMENT DATE: 11/25/10 BY: [Signature] CHECKED: [Signature] APPROVED: [Signature]		2X6 MAG45 (1M), GIGABIT SGM6228 CIRCUIT, INTEGRATED PGE 114-13147 114-13147	STMicroelectronics 2X6 MAG45 (1M), GIGABIT SGM6228 CIRCUIT, INTEGRATED PGE 114-13147 114-13147
---	--	---	---

1658821-1				1658821-2				
PIN ID	1658821-1	1658821-2	PIN ID	1658821-1	1658821-2	PIN ID	1658821-1	1658821-2
1	48VRTN	48VRTN	58	PORT 2 - PAIR 2 +	PORT 2 - PAIR 2 +	115	PORT 7 - PAIR 1 +	PORT 7 - PAIR 1 +
2	+48V	+48V	59	PORT 2 - LED 1 ANODE YEL, CATHODE GRN	NO CONNECTION	116	PORT 7 - PAIR 0 +	PORT 7 - PAIR 0 +
3	48VRTN	48VRTN	60	PORT 2 - LED 2 ANODE YEL, CATHODE GRN	NO CONNECTION	117	PORT 7 - PAIR 1 -	PORT 7 - PAIR 1 -
4	+48V	+48V	61	PORT 2 - LED 1 ANODE GRN, CATHODE YEL	NO CONNECTION	118	PORT 7 - PAIR 0 -	PORT 7 - PAIR 0 -
5	48VRTN	48VRTN	62	PORT 2 - LED 2 ANODE GRN, CATHODE YEL	NO CONNECTION	119	PORT 7 - LED 1 ANODE YEL, CATHODE GRN	NO CONNECTION
6	+48V	+48V	63	PORT 3 - PAIR 3 +	PORT 3 - PAIR 3 +	120	PORT 7 - LED 2 ANODE YEL, CATHODE GRN	NO CONNECTION
7	+DISPORT	+DISPORT	64	PORT 3 - PAIR 2 +	PORT 3 - PAIR 2 +	121	PORT 7 - LED 1 ANODE GRN, CATHODE YEL	NO CONNECTION
8	+RESET	+RESET	65	PORT 3 - PAIR 3 -	PORT 3 - PAIR 3 -	122	PORT 7 - LED 2 ANODE GRN, CATHODE YEL	NO CONNECTION
9	+CSI	+CSI	66	PORT 3 - PAIR 2 -	PORT 3 - PAIR 2 -	123	PORT 8 - PAIR 1 -	PORT 8 - PAIR 1 -
10	+EXIST	+EXIST	67	PORT 3 - PAIR 1 +	PORT 3 - PAIR 1 +	124	PORT 8 - PAIR 0 -	PORT 8 - PAIR 0 -
11	+CSO	+CSO	68	PORT 3 - PAIR 0 +	PORT 3 - PAIR 0 +	125	PORT 8 - PAIR 1 +	PORT 8 - PAIR 1 +
12	MISO	MISO	69	PORT 3 - PAIR 1 -	PORT 3 - PAIR 1 -	126	PORT 8 - PAIR 0 +	PORT 8 - PAIR 0 +
13	MOSI	MOSI	70	PORT 3 - PAIR 0 -	PORT 3 - PAIR 0 -	127	PORT 8 - PAIR 3 -	PORT 8 - PAIR 3 -
14	SCK	SCK	71	PORT 3 - LED 1 ANODE YEL, CATHODE GRN	NO CONNECTION	128	PORT 8 - PAIR 2 -	PORT 8 - PAIR 2 -
15	DGND	DGND	72	PORT 3 - LED 2 ANODE YEL, CATHODE GRN	NO CONNECTION	129	PORT 8 - PAIR 3 +	PORT 8 - PAIR 3 +
16	DGND	DGND	73	PORT 3 - LED 1 ANODE GRN, CATHODE YEL	NO CONNECTION	130	PORT 8 - PAIR 2 +	PORT 8 - PAIR 2 +
17	SCL	SCL	74	PORT 3 - LED 2 ANODE GRN, CATHODE YEL	NO CONNECTION	131	PORT 8 - LED 1 ANODE YEL, CATHODE GRN	NO CONNECTION
18	EXT_REG	EXT_REG	75	PORT 4 - PAIR 1 -	PORT 4 - PAIR 1 -	132	PORT 8 - LED 2 ANODE YEL, CATHODE GRN	NO CONNECTION
19	SDA	SDA	76	PORT 4 - PAIR 0 -	PORT 4 - PAIR 0 -	133	PORT 8 - LED 1 ANODE GRN, CATHODE YEL	NO CONNECTION
20	VPER1	VPER1	77	PORT 4 - PAIR 1 +	PORT 4 - PAIR 1 +	134	PORT 8 - LED 2 ANODE GRN, CATHODE YEL	NO CONNECTION
21	RESERVED	RESERVED	78	PORT 4 - PAIR 0 +	PORT 4 - PAIR 0 +	135	PORT 9 - PAIR 3 +	PORT 9 - PAIR 3 +
22	MODE INIT	MODE INIT	79	PORT 4 - PAIR 3 -	PORT 4 - PAIR 3 -	136	PORT 9 - PAIR 2 +	PORT 9 - PAIR 2 +
23	I2C INIT	I2C INIT	80	PORT 4 - PAIR 2 -	PORT 4 - PAIR 2 -	137	PORT 9 - PAIR 3 -	PORT 9 - PAIR 3 -
24	DGND	DGND	81	PORT 4 - PAIR 3 +	PORT 4 - PAIR 3 +	138	PORT 9 - PAIR 2 -	PORT 9 - PAIR 2 -
25	CENTER TAP VCC, PORTS 6-11	CENTER TAP VCC, PORTS 6-11	82	PORT 4 - PAIR 2 +	PORT 4 - PAIR 2 +	139	PORT 9 - PAIR 1 +	PORT 9 - PAIR 1 +
26	CENTER TAP VCC, PORTS 0-5	CENTER TAP VCC, PORTS 0-5	83	PORT 4 - LED 1 ANODE YEL, CATHODE GRN	NO CONNECTION	140	PORT 9 - PAIR 0 +	PORT 9 - PAIR 0 +
27	PORT 0 - PAIR 1 -	PORT 0 - PAIR 1 -	84	PORT 4 - LED 2 ANODE YEL, CATHODE GRN	NO CONNECTION	141	PORT 9 - PAIR 1 -	PORT 9 - PAIR 1 -
28	PORT 0 - PAIR 0 -	PORT 0 - PAIR 0 -	85	PORT 4 - LED 1 ANODE GRN, CATHODE YEL	NO CONNECTION	142	PORT 9 - PAIR 0 -	PORT 9 - PAIR 0 -
29	PORT 0 - PAIR 1 +	PORT 0 - PAIR 1 +	86	PORT 4 - LED 2 ANODE GRN, CATHODE YEL	NO CONNECTION	143	PORT 9 - LED 1 ANODE YEL, CATHODE GRN	NO CONNECTION
30	PORT 0 - PAIR 0 +	PORT 0 - PAIR 0 +	87	PORT 5 - PAIR 3 +	PORT 5 - PAIR 3 +	144	PORT 9 - LED 2 ANODE YEL, CATHODE GRN	NO CONNECTION
31	PORT 0 - PAIR 3 -	PORT 0 - PAIR 3 -	88	PORT 5 - PAIR 2 +	PORT 5 - PAIR 2 +	145	PORT 9 - LED 1 ANODE GRN, CATHODE YEL	NO CONNECTION
32	PORT 0 - PAIR 2 -	PORT 0 - PAIR 2 -	89	PORT 5 - PAIR 3 -	PORT 5 - PAIR 3 -	146	PORT 9 - LED 2 ANODE GRN, CATHODE YEL	NO CONNECTION
33	PORT 0 - PAIR 3 +	PORT 0 - PAIR 3 +	90	PORT 5 - PAIR 2 -	PORT 5 - PAIR 2 -	147	PORT 10 - PAIR 1 -	PORT 10 - PAIR 1 -
34	PORT 0 - PAIR 2 +	PORT 0 - PAIR 2 +	91	PORT 5 - PAIR 1 +	PORT 5 - PAIR 1 +	148	PORT 10 - PAIR 0 -	PORT 10 - PAIR 0 -
35	PORT 0 - LED 1 ANODE YEL, CATHODE GRN	NO CONNECTION	92	PORT 5 - PAIR 0 +	PORT 5 - PAIR 0 +	149	PORT 10 - PAIR 1 +	PORT 10 - PAIR 1 +
36	PORT 0 - LED 2 ANODE YEL, CATHODE GRN	NO CONNECTION	93	PORT 5 - PAIR 1 -	PORT 5 - PAIR 1 -	150	PORT 10 - PAIR 0 +	PORT 10 - PAIR 0 +
37	PORT 0 - LED 1 ANODE GRN, CATHODE YEL	NO CONNECTION	94	PORT 5 - PAIR 0 -	PORT 5 - PAIR 0 -	151	PORT 10 - PAIR 3 -	PORT 10 - PAIR 3 -
38	PORT 0 - LED 2 ANODE GRN, CATHODE YEL	NO CONNECTION	95	PORT 5 - LED 1 ANODE YEL, CATHODE GRN	NO CONNECTION	152	PORT 10 - PAIR 2 -	PORT 10 - PAIR 2 -
39	PORT 1 - PAIR 3 +	PORT 1 - PAIR 3 +	96	PORT 5 - LED 2 ANODE YEL, CATHODE GRN	NO CONNECTION	153	PORT 10 - PAIR 3 +	PORT 10 - PAIR 3 +
40	PORT 1 - PAIR 2 +	PORT 1 - PAIR 2 +	97	PORT 5 - LED 1 ANODE GRN, CATHODE YEL	NO CONNECTION	154	PORT 10 - PAIR 2 +	PORT 10 - PAIR 2 +
41	PORT 1 - PAIR 3 -	PORT 1 - PAIR 3 -	98	PORT 5 - LED 2 ANODE GRN, CATHODE YEL	NO CONNECTION	155	PORT 10 - LED 1 ANODE YEL, CATHODE GRN	NO CONNECTION
42	PORT 1 - PAIR 2 -	PORT 1 - PAIR 2 -	99	PORT 6 - PAIR 1 -	PORT 6 - PAIR 1 -	156	PORT 10 - LED 2 ANODE YEL, CATHODE GRN	NO CONNECTION
43	PORT 1 - PAIR 1 +	PORT 1 - PAIR 1 +	100	PORT 6 - PAIR 0 -	PORT 6 - PAIR 0 -	157	PORT 10 - LED 1 ANODE GRN, CATHODE YEL	NO CONNECTION
44	PORT 1 - PAIR 0 +	PORT 1 - PAIR 0 +	101	PORT 6 - PAIR 1 +	PORT 6 - PAIR 1 +	158	PORT 10 - LED 2 ANODE GRN, CATHODE YEL	NO CONNECTION
45	PORT 1 - PAIR 1 -	PORT 1 - PAIR 1 -	102	PORT 6 - PAIR 0 +	PORT 6 - PAIR 0 +	159	PORT 11 - PAIR 3 +	PORT 11 - PAIR 3 +
46	PORT 1 - PAIR 0 -	PORT 1 - PAIR 0 -	103	PORT 6 - PAIR 3 -	PORT 6 - PAIR 3 -	160	PORT 11 - PAIR 2 +	PORT 11 - PAIR 2 +
47	PORT 1 - LED 1 ANODE YEL, CATHODE GRN	NO CONNECTION	104	PORT 6 - PAIR 2 -	PORT 6 - PAIR 2 -	161	PORT 11 - PAIR 3 -	PORT 11 - PAIR 3 -
48	PORT 1 - LED 2 ANODE YEL, CATHODE GRN	NO CONNECTION	105	PORT 6 - PAIR 3 +	PORT 6 - PAIR 3 +	162	PORT 11 - PAIR 2 -	PORT 11 - PAIR 2 -
49	PORT 1 - LED 1 ANODE GRN, CATHODE YEL	NO CONNECTION	106	PORT 6 - PAIR 2 +	PORT 6 - PAIR 2 +	163	PORT 11 - PAIR 1 +	PORT 11 - PAIR 1 +
50	PORT 1 - LED 2 ANODE GRN, CATHODE YEL	NO CONNECTION	107	PORT 6 - LED 1 ANODE YEL, CATHODE GRN	NO CONNECTION	164	PORT 11 - PAIR 0 +	PORT 11 - PAIR 0 +
51	PORT 2 - PAIR 1 -	PORT 2 - PAIR 1 -	108	PORT 6 - LED 2 ANODE YEL, CATHODE GRN	NO CONNECTION	165	PORT 11 - PAIR 1 -	PORT 11 - PAIR 1 -
52	PORT 2 - PAIR 0 -	PORT 2 - PAIR 0 -	109	PORT 6 - LED 1 ANODE GRN, CATHODE YEL	NO CONNECTION	166	PORT 11 - PAIR 0 -	PORT 11 - PAIR 0 -
53	PORT 2 - PAIR 1 +	PORT 2 - PAIR 1 +	110	PORT 6 - LED 2 ANODE GRN, CATHODE YEL	NO CONNECTION	167	PORT 11 - LED 1 ANODE YEL, CATHODE GRN	NO CONNECTION
54	PORT 2 - PAIR 0 +	PORT 2 - PAIR 0 +	111	PORT 7 - PAIR 3 +	PORT 7 - PAIR 3 +	168	PORT 11 - LED 2 ANODE YEL, CATHODE GRN	NO CONNECTION
55	PORT 2 - PAIR 3 -	PORT 2 - PAIR 3 -	112	PORT 7 - PAIR 2 +	PORT 7 - PAIR 2 +	169	PORT 11 - LED 1 ANODE GRN, CATHODE YEL	NO CONNECTION
56	PORT 2 - PAIR 2 -	PORT 2 - PAIR 2 -	113	PORT 7 - PAIR 3 -	PORT 7 - PAIR 3 -	170	PORT 11 - LED 2 ANODE GRN, CATHODE YEL	NO CONNECTION
57	PORT 2 - PAIR 3 +	PORT 2 - PAIR 3 +	114	PORT 7 - PAIR 2 -	PORT 7 - PAIR 2 -			

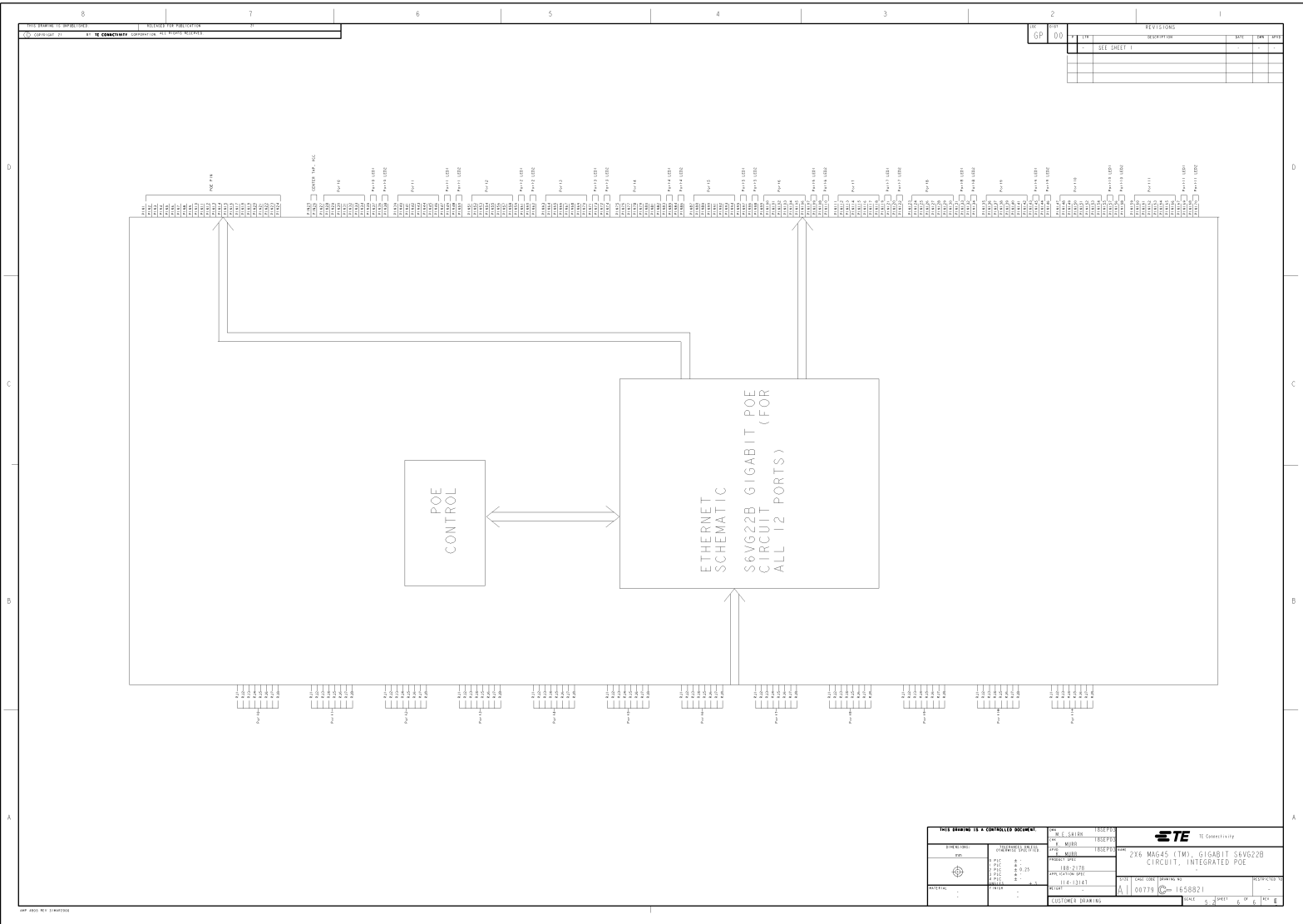
DATE DRAWING IS CONTROL DOCUMENT DATE: 01/01/2019 VERSION: 1.0		1658821-1 1658821-2 1658821-3		STE STMicroelectronics 2X6 MAG45 (TM), GIGABIT S6V622B CIRCUIT, INTEGRATED PGE	
1658821-1 1658821-2 1658821-3		1658821-1 1658821-2 1658821-3		1658821-1 1658821-2 1658821-3	
1658821-1 1658821-2 1658821-3		1658821-1 1658821-2 1658821-3		1658821-1 1658821-2 1658821-3	

PIN ID	1658821-3	PIN ID	1658821-3	PIN ID	1658821-3
1	48VBTN	58	PORT 2 - PAIR 2 +	115	PORT 7 - PAIR 1 +
2	+48V	59	PORT 2 - LED 1 ANODE RED, CATHODE GRN	116	PORT 7 - PAIR 0 +
3	48VBTN	60	PORT 2 - LED 2 ANODE RED, CATHODE GRN	117	PORT 7 - PAIR 1 -
4	+48V	61	PORT 2 - LED 1 ANODE GRN, CATHODE RED	118	PORT 7 - PAIR 0 -
5	48VBTN	62	PORT 2 - LED 2 ANODE GRN, CATHODE RED	119	PORT 7 - LED 1 ANODE RED, CATHODE GRN
6	+48V	63	PORT 3 - PAIR 3 +	120	PORT 7 - LED 2 ANODE RED, CATHODE GRN
7	xDISPORT	64	PORT 3 - PAIR 2 +	121	PORT 7 - LED 1 ANODE GRN, CATHODE RED
8	xRESET	65	PORT 3 - PAIR 3 -	122	PORT 7 - LED 2 ANODE GRN, CATHODE RED
9	xCSI	66	PORT 3 - PAIR 2 -	123	PORT 8 - PAIR 1 -
10	xEXIST	67	PORT 3 - PAIR 1 +	124	PORT 8 - PAIR 0 -
11	xCSO	68	PORT 3 - PAIR 0 +	125	PORT 8 - PAIR 1 +
12	MISO	69	PORT 3 - PAIR 1 -	126	PORT 8 - PAIR 0 +
13	MOSI	70	PORT 3 - PAIR 0 -	127	PORT 8 - PAIR 3 -
14	SCK	71	PORT 3 - LED 1 ANODE RED, CATHODE GRN	128	PORT 8 - PAIR 2 -
15	OGND	72	PORT 3 - LED 2 ANODE RED, CATHODE GRN	129	PORT 8 - PAIR 3 +
16	OGND	73	PORT 3 - LED 1 ANODE GRN, CATHODE RED	130	PORT 8 - PAIR 2 +
17	SCL	74	PORT 3 - LED 2 ANODE GRN, CATHODE RED	131	PORT 8 - LED 1 ANODE RED, CATHODE GRN
18	EXT_REG	75	PORT 4 - PAIR 1 -	132	PORT 8 - LED 2 ANODE RED, CATHODE GRN
19	SDA	76	PORT 4 - PAIR 0 -	133	PORT 8 - LED 1 ANODE GRN, CATHODE RED
20	VPERI	77	PORT 4 - PAIR 1 +	134	PORT 8 - LED 2 ANODE GRN, CATHODE RED
21	RESERVED	78	PORT 4 - PAIR 0 +	135	PORT 9 - PAIR 3 +
22	MODEINIT	79	PORT 4 - PAIR 3 -	136	PORT 9 - PAIR 2 +
23	I2CINIT	80	PORT 4 - PAIR 2 -	137	PORT 9 - PAIR 3 -
24	OGND	81	PORT 4 - PAIR 3 +	138	PORT 9 - PAIR 2 -
25	CENTER TAP VCC, PORTS 6-11	82	PORT 4 - PAIR 2 +	139	PORT 9 - PAIR 1 +
26	CENTER TAP VCC, PORTS 0-5	83	PORT 4 - LED 1 ANODE RED, CATHODE GRN	140	PORT 9 - PAIR 0 +
27	PORT 0 - PAIR 1 -	84	PORT 4 - LED 2 ANODE RED, CATHODE GRN	141	PORT 9 - PAIR 1 -
28	PORT 0 - PAIR 0 -	85	PORT 4 - LED 1 ANODE GRN, CATHODE RED	142	PORT 9 - PAIR 0 -
29	PORT 0 - PAIR 1 +	86	PORT 4 - LED 2 ANODE GRN, CATHODE RED	143	PORT 9 - LED 1 ANODE RED, CATHODE GRN
30	PORT 0 - PAIR 0 +	87	PORT 5 - PAIR 3 +	144	PORT 9 - LED 2 ANODE RED, CATHODE GRN
31	PORT 0 - PAIR 3 -	88	PORT 5 - PAIR 2 +	145	PORT 9 - LED 1 ANODE GRN, CATHODE RED
32	PORT 0 - PAIR 2 -	89	PORT 5 - PAIR 3 -	146	PORT 9 - LED 2 ANODE GRN, CATHODE RED
33	PORT 0 - PAIR 3 +	90	PORT 5 - PAIR 2 -	147	PORT 10 - PAIR 1 -
34	PORT 0 - PAIR 2 +	91	PORT 5 - PAIR 1 +	148	PORT 10 - PAIR 0 -
35	PORT 0 - LED 1 ANODE RED, CATHODE GRN	92	PORT 5 - PAIR 0 +	149	PORT 10 - PAIR 1 +
36	PORT 0 - LED 2 ANODE RED, CATHODE GRN	93	PORT 5 - PAIR 1 -	150	PORT 10 - PAIR 0 +
37	PORT 0 - LED 1 ANODE GRN, CATHODE RED	94	PORT 5 - PAIR 0 -	151	PORT 10 - PAIR 3 -
38	PORT 0 - LED 2 ANODE GRN, CATHODE RED	95	PORT 5 - LED 1 ANODE RED, CATHODE GRN	152	PORT 10 - PAIR 2 -
39	PORT 1 - PAIR 3 +	96	PORT 5 - LED 2 ANODE RED, CATHODE GRN	153	PORT 10 - PAIR 3 +
40	PORT 1 - PAIR 2 +	97	PORT 5 - LED 1 ANODE GRN, CATHODE RED	154	PORT 10 - PAIR 2 +
41	PORT 1 - PAIR 3 -	98	PORT 5 - LED 2 ANODE GRN, CATHODE RED	155	PORT 10 - LED 1 ANODE RED, CATHODE GRN
42	PORT 1 - PAIR 2 -	99	PORT 6 - PAIR 1 -	156	PORT 10 - LED 2 ANODE RED, CATHODE GRN
43	PORT 1 - PAIR 1 +	100	PORT 6 - PAIR 0 -	157	PORT 10 - LED 1 ANODE GRN, CATHODE RED
44	PORT 1 - PAIR 0 +	101	PORT 6 - PAIR 1 +	158	PORT 10 - LED 2 ANODE GRN, CATHODE RED
45	PORT 1 - PAIR 1 -	102	PORT 6 - PAIR 0 +	159	PORT 11 - PAIR 3 +
46	PORT 1 - PAIR 0 -	103	PORT 6 - PAIR 3 -	160	PORT 11 - PAIR 2 +
47	PORT 1 - LED 1 ANODE RED, CATHODE GRN	104	PORT 6 - PAIR 2 -	161	PORT 11 - PAIR 3 -
48	PORT 1 - LED 2 ANODE RED, CATHODE GRN	105	PORT 6 - PAIR 3 +	162	PORT 11 - PAIR 2 -
49	PORT 1 - LED 1 ANODE GRN, CATHODE RED	106	PORT 6 - PAIR 2 +	163	PORT 11 - PAIR 1 +
50	PORT 1 - LED 2 ANODE GRN, CATHODE RED	107	PORT 6 - LED 1 ANODE RED, CATHODE GRN	164	PORT 11 - PAIR 0 +
51	PORT 2 - PAIR 1 -	108	PORT 6 - LED 2 ANODE RED, CATHODE GRN	165	PORT 11 - PAIR 1 -
52	PORT 2 - PAIR 0 -	109	PORT 6 - LED 1 ANODE GRN, CATHODE RED	166	PORT 11 - PAIR 0 -
53	PORT 2 - PAIR 1 +	110	PORT 6 - LED 2 ANODE GRN, CATHODE RED	167	PORT 11 - LED 1 ANODE RED, CATHODE GRN
54	PORT 2 - PAIR 0 +	111	PORT 7 - PAIR 3 +	168	PORT 11 - LED 2 ANODE RED, CATHODE GRN
55	PORT 2 - PAIR 3 -	112	PORT 7 - PAIR 2 +	169	PORT 11 - LED 1 ANODE GRN, CATHODE RED
56	PORT 2 - PAIR 2 -	113	PORT 7 - PAIR 3 -	170	PORT 11 - LED 2 ANODE GRN, CATHODE RED
57	PORT 2 - PAIR 3 +	114	PORT 7 - PAIR 2 -		

DATE DRAWING IS CONTROLLED DOCUMENT		REV. 00	REVISED	DATE	BY	DESCRIPTION
DESIGNED BY		REV. 00	REVISED	DATE	BY	DESCRIPTION
CHECKED BY		REV. 00	REVISED	DATE	BY	DESCRIPTION
APPROVED BY		REV. 00	REVISED	DATE	BY	DESCRIPTION
CUSTOMER DRAWING		REV. 00	REVISED	DATE	BY	DESCRIPTION

STMicroelectronics
2X6 MAG45 (TM), GIGABIT S6V622B CIRCUIT, INTEGRATED POE

DATE: 1008-21-10
 FILE: 112-13167
 PART: 1658821-3
 REV: 00



REV. NO.		REV. DATE		REV. DESCRIPTION	
01	01				

DATE SHOWN IN CONTROL DOCUMENT DATE: 01/11/2011 TIME: 10:00:00 USER: [Name] PROJECT: [Project Name]		REV. NO. 01	REV. DATE 01/11/2011	REV. DESCRIPTION Initial Release
PRODUCT NAME S6V622B		MANUFACTURER STMicroelectronics		MARKETING 26 MAG45 (TM), GIGABIT S6V622B CIRCUIT, INTEGRATED POE
DESCRIPTION Ethernet Schematic POE Circuit		DATE CODE 114-1314T		DATE OF ENTRY 01/11/2011
REVISIONS 01: Initial Release		DATE 01/11/2011		TIME 10:00:00