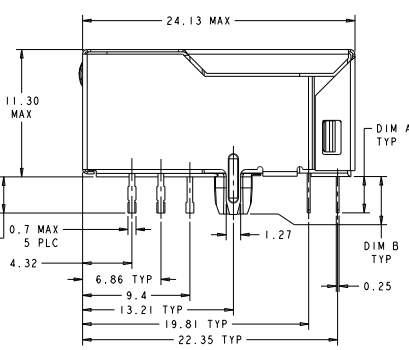
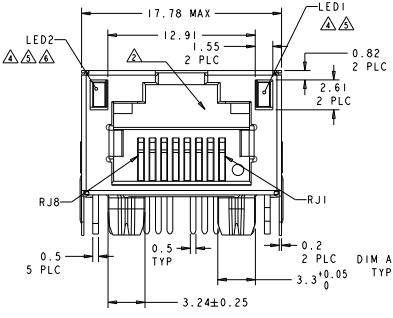
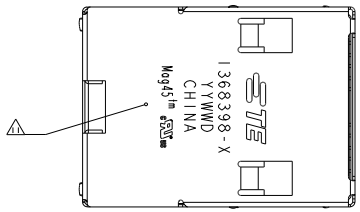
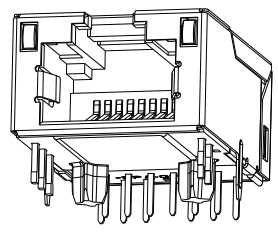


8 7 6 5 4 3 2 1

TE CONNECTIVITY PARTS
TE CONNECTIVITY CORPORATION
ALL RIGHTS RESERVED

REV	DATE	DESCRIPTION	BY	CHK	APP
A	ECO-11-003323				
L	ECO-11-006790				
M	ECO-11-014530				
N	ECO-11-024270				



MATERIALS:
 -HOUSING: HIGH TEMPERATURE NYLON, BLACK, UL 94V-0
 -SHIELD: 0.20mm THICK, BRASS PREPLATED WITH 1.27μm MIN SEMI-BRIGHT NICKEL; POST-DIPPED WITH 2μm MIN SAC 305 ALLOY LEAD FREE SOLDER (TIN PRIMARY, 3% SILVER, 0.5% COPPER)
 -CONTACT TAILS: 0.25mm THICK, PHOSPHOR BRONZE, 1.27 μm MIN OVERALL NICKEL UNDERPLATE, 3μm MIN TIN PLATE
 -MOD JACK CONTACTS: 0.25mm THICK, PHOSPHOR BRONZE, 1.27 μm MIN OVERALL NICKEL UNDERPLATE, WITH 0.76μm MIN LOCALIZED GOLD PLATE AT PLUG INTERFACE
 -LIGHT EMITTING DIODE (LED): DIFFUSED EPOXY LENS, 0.5mm X 0.5mm CARBON STEEL WIREFRAME LEADS PREPLATED WITH 2.03μm MIN. SILVER PLATE OVER 1.02μm MIN. NICKEL OVER 1.02μm MIN. COPPER UNDERPLATE; LEADS POST-PLATED WITH 3.05μm MIN. MATTE TIN.
 -LIGHT PIPE: POLYCARBONATE

RJ45 JACK CAVITY CONFORMS TO FCC RULES AND REGULATIONS PART 68, SUB-PART F.

MAGNETICS:
 -IMPEDANCE: 100 OHMS
 -TRANSMIT OPEN CIRCUIT INDUCTANCE (OCL): 350μH (MIN) @100KHZ, 0.1 VRMS WITH 8 mA DC BIAS
 -TURNS RATIO (C/WP-CABLE): TX 1:1, RX: 1:1
PERFORMANCE:
 -TRANSMIT BIDIRECTIONAL ALL 4 PAIRS
 -RECEIVE BIDIRECTIONAL ALL 4 PAIRS

FREQUENCY	INSERTION LOSS (dB MAX)	RETURN LOSS (dB MIN) CIRCUIT IMPEDANCE = 100 OHMS ±15%	COMMON MODE REJECTION RATIO (dB MIN)	CROSSTALK ATTENUATION (dB MIN)
0.5 MHz - 40.0 MHz	1.2	18.0	30	35
40.0 MHz - 100.0 MHz		$12-20 \log(f/80)$ f IS FREQUENCY IN MHZ		$33-20 \log(f/50)$ f IS FREQUENCY IN MHZ

ALL MAGNETIC ELECTRICAL CHARACTERISTICS RATED @ 25°C

DIELECTRIC (ISOLATION VOLTAGE):
 -2250 VDC (1 mA CUTOFF CURRENT) FOR 60 SECONDS DURATION BETWEEN CABLE CONTACTS AND PCB CONTACTS (INCLUDING SHIELD).
 -1500 VRMS (10 mA CUTOFF CURRENT) FOR 60 SECONDS DURATION BETWEEN CABLE CONTACTS AND PCB CONTACTS (INCLUDING SHIELD).
 -ALL BRIDGED ON EITHER SIDE OF MAGNETICS PACKAGE FOR RJ-45 CONTACTS.
OPERATING TEMPERATURE: FROM 0°C TO +70°C.

LED COMPLIANT WITH IEC60825-1 SAFETY OF LASER PRODUCTS. WHEN OPERATED UP TO 20mA.

LED PEAK WAVELENGTH: GREEN = 565±5nm
YELLOW = 591±5nm
ORANGE = 607±5nm

LED 2 WILL EMULATE "YELLOW" LIGHT WHEN BOTH GREEN AND ORANGE DIODES ARE DRIVEN AT CONSTANT CURRENT (20 mA RECOMMENDED) TO INDICATE THE THIRD COLOR STATES.

ALL DIMENSIONS NOMINAL UNLESS OTHERWISE NOTED.

8. 1368398-1 SHOWN UNLESS OTHERWISE NOTED.

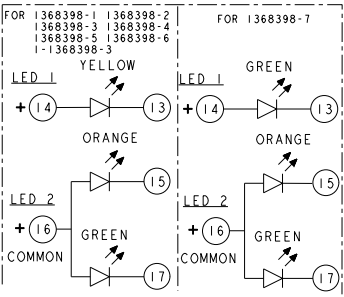
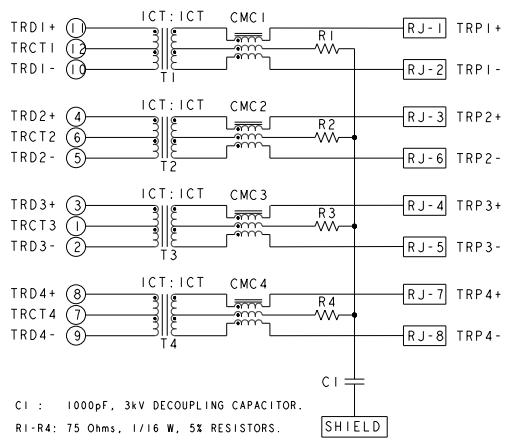
RJ45 MOD PLUG SELECTIVE - THIS CONNECTOR UTILIZES STAINLESS STEEL SPRING MEMBER WHICH PREVENTS THE INSERTION OF A RJ11 (6 POSITION) PLUG INTO THE JACK PORT, WHILE ALLOWING A RJ45 (8 POSITION) PLUG TO MATE FREELY.
WARNING: THIS FEATURE WAS DEVELOPED FOR TYPICAL PLUG INSERTION FORCES. EXCESSIVE INSERTION FORCE MAY OVERCOME THE SELECTIVE FEATURES AND DAMAGE THE CONNECTOR.

APPLIES ONLY TO 1368398-3, 1368398-4, 1369398-7 AND 1-1368398-3.

TE CONNECTIVITY LOGO, PART NUMBER, DATE CODE, PLACE OF ORIGIN TO BE MARKED IN APPROXIMATE LOCATION AS SHOWN. DATE CODE: "YY" IS YEAR, "WW" IS WORK WEEK, "D" IS DAY OF WEEK, WITH SUNDAY=1

12. THESE PARTS ARE COMPLIANT TO BOTH WAVE SOLDERING PROCESS, PREHEAT TEMPERATURE IS 150°C, 120 SECONDS TO 180 SECONDS, PEAK SOLDERING TEMPERATURE IS 265°C MAX, 10 SECONDS MAX; AND IR REFLOW SOLDERING PROCESS, PEAK SOLDERING TEMPERATURE 260°C MAX DURATION TIME 10 SECONDS MAX , OVER 230°C WITHIN 40-60 SECONDS.

1G18 GIGABIT CIRCUIT



TRAY	YELLOW	GREEN/ORANGE	YES	TOP AND SIDES	1.8	1.8	1-1368398-3
TRAY	GREEN	GREEN/ORANGE	YES	TOP AND SIDES	3.3	3.18	1368398-7
TRAY	YELLOW	GREEN/ORANGE	NO	TOP ONLY	3.3	3.18	1368398-6
REEL	YELLOW	GREEN/ORANGE	YES	NO	1.8	1.8	1368398-5
TRAY	YELLOW	GREEN/ORANGE	YES	TOP AND SIDES	3.3	3.18	1368398-4
REEL	YELLOW	GREEN/ORANGE	YES	TOP AND SIDES	1.8	1.8	1368398-3
REEL	YELLOW	GREEN/ORANGE	YES	TOP ONLY	1.8	1.8	1368398-2
TRAY	YELLOW	GREEN/ORANGE	NO	NO	3.3	3.18	1368398-1

PACKAGE STYLE	LED 1	LED 2	RJ11 SELECTIVE CAPABILITY	GROUND TABS	DIM B	DIM A	PART NO.
TE CONNECTIVITY LOGO	△	△	△	△	△	△	1007790-1368398

