

4

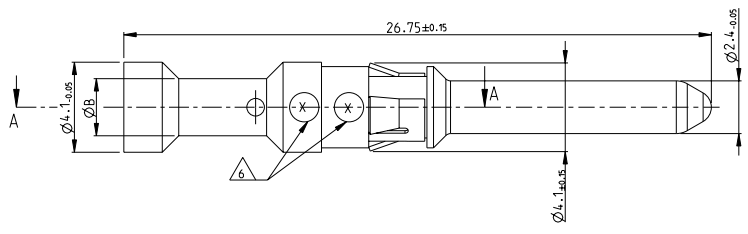
3

2

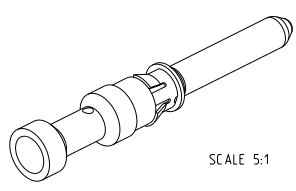
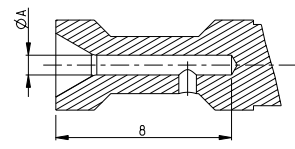
1

THIS DRAWING IS UNPUBLISHED. RELEASED FOR PUBLICATION 2006  
 BY: ALL RIGHTS RESERVED.

REV	DATE	BY	CHK	APPV
HZ	24MAR2011	RK	HMR	



SECTION A-A



- NOTES:
- 1 MATERIAL SEE TABLE
  - 2 SURFACE SEE TABLE
  - 3 ASSEMBLY WEIGHT SEE TABLE
  - 4 PACKAGING: 50 PIECES IN POLYBAG
  - 5 PACKAGING: 500 PIECES IN POLYBAG & CARTON
  - 6 CROSS-SECTION MARKING
  - 7 NO VENTILATION HOLE REQUIRED AT CROSS SECTION >4 mm<sup>2</sup>
  - 8 SUITABLE SOCKET CONTACT: PN 1105301
  - 9 SUITABLE INSERTS: SERIES HVT
  - 10 SUITABLE CRIMP TOOL: PN 1-1105851-8
  - 11 SUITABLE INSERTION TOOL: PN 0-1102855-6
  - 12 SUITABLE EXTRACTION TOOL: PN 0-1102855-3
  - 13 STANDARDS: DIN EN 61984, DIN EN 60664-1

ASSEMBLY WEIGHT IN (Kg)		CROSS SECTION MARKING		ITEM NO
DESCRIPTION	MATERIAL	SURFACE	ØA	ØB
Pin Contact 4.0 mm <sup>2</sup>			2.85	3.9
Pin Contact 2.5 mm <sup>2</sup>			2.2	3.2
Pin Contact 1.5 mm <sup>2</sup>			1.8	3.0
Pin Contact 0.75-1.0 mm <sup>2</sup>			1.45	2.6
Pin Contact 0.5 mm <sup>2</sup>			1.1	2.6
Pin Contact 0.13-0.4 mm <sup>2</sup>			0.9	2.6
Pin Contact 14 AWG			2.0	3.2
Pin Contact 12 AWG			2.55	3.6
Pin Contact 10 AWG			3.2	4.1
Pin Contact 4.0 mm <sup>2</sup>			2.85	3.9
Pin Contact 2.5 mm <sup>2</sup>			2.2	3.2
Pin Contact 1.5 mm <sup>2</sup>			1.8	3.0
Pin Contact 0.75-1.0 mm <sup>2</sup>			1.45	2.6
Pin Contact 0.5 mm <sup>2</sup>			1.1	2.6
Pin Contact 0.13-0.4 mm <sup>2</sup>			0.9	2.6

THIS DRAWING IS A CONTROLLED DOCUMENT.		DATE: 01 SEP 2007	
DIMENSIONS: mm		DRAWN BY: SCHURBEITZ	
MATERIAL:		PRODUCT SPEC: 108-74035	
FINISH:		APPLICATION SPEC: 114-74013	
CUSTOMER DRAWING		SCALE: 5:1	



CLIP

SIZE: A2 00779

SCALE: 5:1 SHEET 1 of 1 REV: HZ