

4

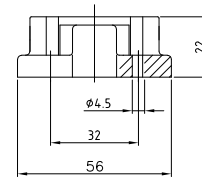
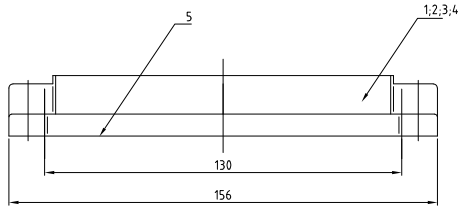
3

2

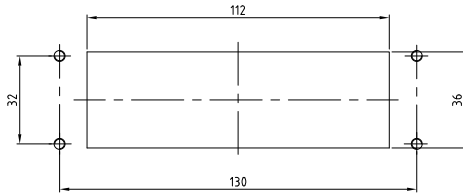
1

THIS DRAWING IS UNPUBLISHED. RELEASED FOR PUBLICATION.  
 © COPYRIGHT BY TYCO ELECTRONICS CORPORATION. ALL INTERNATIONAL RIGHTS RESERVED.

LOC		DIST		REVISIONS			
F	LR	DATE	BY	APD	REV	DESCRIPTION	
A3		11.03.02	SR	SM		new index ECR-08-001603	
A4		15FEB11	HMR	MM		REVISED PER ECO-11-002591	



Panel Cut Out



- Notes:
- ⚠ Material: Housing: aluminium diecasting alloy
  - ⚠ Seals: Neoprene conductive
  - ⚠ Surface: Varnisch- grey  
yellow chromium plated +  
Varnisch black
  - ⚠ Varnisch on the inside not necessarily

- Bemerkungen:
- ⚠ Material: Gehäuse: Alu-Druckguß-Legierung
  - ⚠ Dichtungen: Neoprene leitfähig
  - ⚠ Oberfläche: Lackierung - grau  
gelb chromatiert +  
Lackierung schwarz
  - ⚠ Lackierung im Gehäuseinnere ist nicht notwendig

QTY	REV	DESCRIPTION / BENENNUNG	MATERIAL	SURFACE/OBERFLÄCHE	COLOR/FARBE	ITEM NO.	REMARKS / BEMERKUNGEN
1	1	0-Ring Bg8	Neoprene	-	black/schwarz	5	Conductive
1	-	Bulkhead housing EMV-K Bg8	Aluminium/Alu	yellow chromated	black/schwarz	4	
-	1	Bulkhead housing EMV Bg8	Aluminium/Alu	-	grey/grau	3	
-	-	Bulkhead housing EMV Bg8	Aluminium/Alu	-	unvarnished	2	
-	-	Bulkhead housing EMV Bg8	Aluminium/Alu	-	white aluminum	1	
4-5	3-50	2-0-1					

THIS DRAWING IS A CONTROLLED DOCUMENT.		DATE: 01.08.2000	
DRAWN BY: Schneider		DATE: 01.08.2000	
CHECKED BY: Schwilger		DATE: -	
DESIGNED BY: -		DATE: -	
APPROVED BY: -		DATE: -	
PRODUCT SPEC: -		DATE: -	
APPLICATION SPEC: -		DATE: -	
WEIGHT: -		DATE: -	
MATERIAL: ⚠		FINISH: ⚠	

EMV-K 24/64 AG	EMV 24/64 AG	EMV 24/64 AG	EMV 24/64 AG
ORIGINAL UNRESTRICTED			

TYCO ELECTRONICS CORPORATION		Harrisburg, Pa 17105-3608	
Surface mounted housing bottom entry EMV			
Anboegehaeuse EMV.24/64 AG			
SIZE: A2	CAGE CODE: 00779	DRAWING NO: 1102760	RESTRICTED TO: -
CUSTOMER DRAWING		SCALE: 1:1	SHEET: 1 of 1