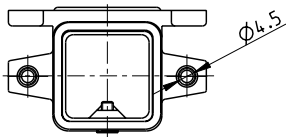
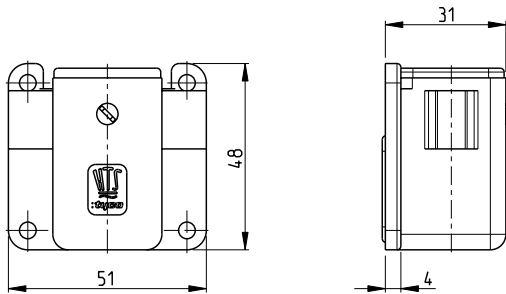
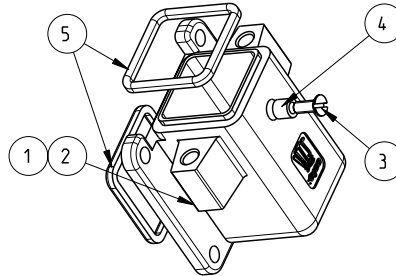


THIS DRAWING IS UNPUBLISHED. RELEASED FOR PUBLICATION 2009
 © COPYRIGHT 2009 BY TYCO ELECTRONICS CORPORATION. ALL RIGHTS RESERVED.

LOC	DIST	REVISIONS				
P	LTR	DESCRIPTION	DATE	DWN	APVD	
A7		ECR-09-023155	22OCT2009	VG	AR	



PN 4-5 AS SHOWN

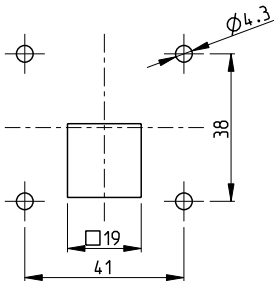


Notes

- SUITABLE HOUSINGS: SERIES EMV, SIZE 1
CUSTOMER DRAWING 1102700, 1106402, 1106200
- STANDARDS:
DIN EN 61984, DIN EN 60664-1
- SUR TEC 650 CHROMIT AL TCP PASSIVATION
- TOOL:
SLOTTED SCREW DRIVER 4.0x0.8
- VARNISH ON INSIDE AREA NOT NECESSARY
- PACKAGING:
10 SETS IN A CARTON, PRE-MOUNTED

3-1102702-5	EMV.3/4.SGF
4-1102702-5	EMV-K.3/4.SGF
PART NO.	ORDERING TEXT

PANEL-CUT-OUT



PN/QTY	DESCRIPTION	MATERIAL	COLOR/SURFACE	NOTE	ITEM
2	2 PROFILE SEAL	FKM	BLACK	SERIES EMV / HIP	5
1	1 HOSE SECTION	FKM	BLACK	SERIES EMV / HIP ϕ 3x1x4.5	4
1	1 SCREW, SLOTTED COUNTERS, FLAT HEAD	STAINL. STEEL	BLANK	M3x8 DIN EN ISO 2009	3
1	- ANGLED BULKHEAD HOUSING	ALU	BLACK SEE NOTE 3	SERIES EMV-K	2
-	1 ANGLED BULKHEAD HOUSING	ALU	GREY	SERIES EMV	1

PARTS LIST (PER ONE UNIT)

<small>THIS DRAWING IS A CONTROLLED DOCUMENT FOR TYCO ELECTRONICS CORPORATION IT IS SUBJECT TO CHANGE AND THE CONTROLLING ENGINEERING ORGANIZATION SHOULD BE CONTACTED FOR THE LATEST REVISION.</small>		DWN 25AUG2009 V. GLUMM CHK 25AUG2009 H. Braun APVD 25AUG2009 T. Schnurpfeil	Tyco Electronics Tyco Electronics AMP GmbH 64625 Bensheim (Germany)
DIMENSIONS: mm 	TOLERANCES UNLESS OTHERWISE SPECIFIED: 0 PLC \pm 1 PLC \pm 2 PLC \pm 3 PLC \pm 4 PLC \pm ANGLES \pm	NAME ANGLD BULKHEAD HOUSING ASS'Y BOTTOM ENTRY, SERIES EMV, SIZE 1	SIZE CAGE CODE DRAWING NO A3 00779 C-1102702
MATERIAL -	FINISH -	APPLICATION SPEC WEIGHT -	RESTRICTED TO SCALE 1:1 SHEET 1 OF 1 REV A7

AMP 1470-19 REV 31MAR2000

Pro/ENGINEER DRAWING