

4

3

2

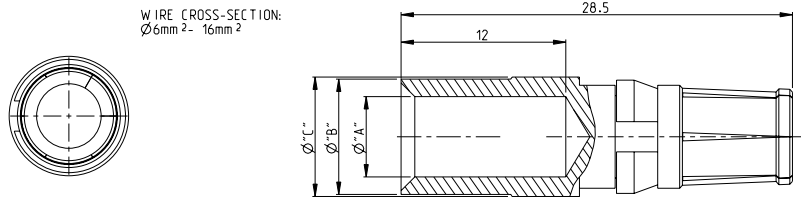
1

THIS DRAWING IS UNPUBLISHED. RELEASED FOR PUBLICATION 2006
 ALL RIGHTS RESERVED. COPYRIGHT 2006

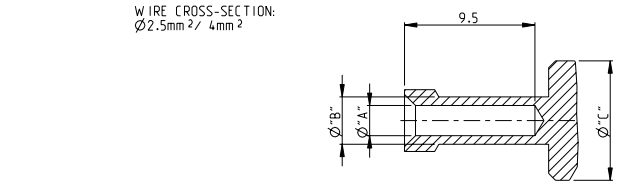
REVISONS		DATE	BY	APPROV
P	LYR			
C3	REVISED PER ECO-11-005150	23MAY2011	RK	HMR
C4	ECR-11-021594	19NOV2011	RK	PKO

Notes

- 1 MATERIAL: BRASS
- 2 FINISH SILVER PLATING: 2µm Ag MIN. OVER Cu
- 3 FINISH GOLD PLATING: 0.75µm Au MIN. OVER Ni
- 4 WEIGHT (MAX.): 6.44 g, VOLUME (MAX.): 795mm³ (APPROX.)
- 5 SUITABLE PIN CONTACT: CUSTOMER DRAWING 1105150
- 6 SUITABLE INSERTS: SERIES HSS, CUSTOMER DRAWING
- 7 SUITABLE CRIMP TOOL: PN 1-1105850-8
- 8 SUITABLE INSERTION TOOL: -
- 9 SUITABLE EXTRACTION TOOL: PN 0-1102855-5
- 10 FINE WIRE DIA. MAX. Ø4.5
- 11 STANDARDS: DIN EN 61984, DIN EN 60664-1
- 12 PACKAGING: 25 PIECES IN A POLY-BAG
- 13 PACKAGING: 1 PIECE LOOSE



WIRE CROSS-SECTION:
 Ø6mm² - 16mm²



WIRE CROSS-SECTION:
 Ø2.5mm² / 4mm²

ORDERING TEXT	PLATING	CROSS SECTION	DIMENSIONS	STRIPPING-LENGTH	WITH CLIP	WITHOUT CLIP	RAW PART	
		[MM ²]	"A" "B" "C"	[MM]	PN	PN	PN	
HSS-C-Bu.Au.16.0 mm ²	GOLD	16.0	5.85 8.4 8.7	12	5-2	9-3	7-9	
HSS-C-Bu.Au.10.0 mm ²		10.0	4.35 5.9 8.7	12	4-2	9-2	7-8	
HSS-C-Bu.Au.6.0 mm ²		6.0	3.5 4.9 8.7	12	3-2	9-1	7-7	
HSS-C-Bu.Ag.25.0 mm ²	SILVER	25.0	7.0 9.45 9.6	12	6-1	8-7	7-6	
HSS-C-Bu.Ag.16.0 mm ²		16.0	5.85 8.4 8.7	12	5-1	8-6	7-5	
HSS-C-Bu.Ag.10.0 mm ² -fine		10.0	4.6 5.9 8.7	12	4-3	8-5	7-4	
HSS-C-Bu.Ag.10.0 mm ²		10.0	4.35 5.9 8.7	12	4-1	8-4	7-3	
HSS-C-Bu.Ag.6.0 mm ²		6.0	3.5 4.9 8.7	12	3-1	8-3	7-2	
HSS-C-Bu.Ag.4.0 mm ²		4.0	2.8 3.9 8.7	12	2-1	8-2	7-1	
HSS-C-Bu.Ag.2.5 mm ²		2.5	2.2 3.45 8.7	12	1-1	8-1	7-0	
HSS-C-Bu.25.0 mm ²		CuZn36Pb1.5F43	25.0	7.0 9.45 9.6	-	-	-	0-7
HSS-C-Bu.16.0 mm ²			16.0	5.85 8.4 8.7	-	-	-	0-6
HSS-C-Bu.10.0 mm ² -fine			10.0	4.6 5.9 8.7	-	-	-	0-5
HSS-C-Bu.10.0 mm ²	10.0		4.35 5.9 8.7	-	-	-	0-4	
HSS-C-Bu.6.0 mm ²	6.0		3.5 4.9 8.7	-	-	-	0-3	
HSS-C-Bu.4.0 mm ²	4.0		2.8 3.9 8.7	-	-	-	0-2	
HSS-C-Bu.2.5 mm ²	2.5		2.2 3.45 8.7	-	-	-	0-1	

THIS DRAWING IS A CONTROLLED DOCUMENT. DATE: 10APR2008
 DRAWN BY: K. SCHROEDER, CHECKED BY: H. BRAUN, APPROVED BY: T. SCHNURBEFFEL
 DIMENSIONS: mm, TO BE KEPT UNLESS OTHERWISE SPECIFIED, ANGLES: 90°
 MATERIAL: 1.1
 PRODUCT SPEC: 108-74016, APPLICATION SPEC: 114-74028, WEIGHT: -
 CUSTOMER DRAWING, SIZE: A2, CASE CODE: 00779, DRAWING NO: ©=1105151, RESTRICTED TO: -
 SCALE: 5:1, SHEET: 1 of 1, REV: 4