

4

3

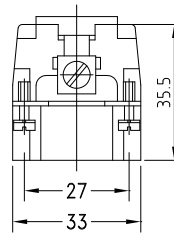
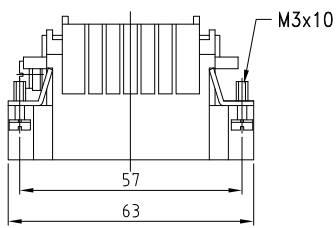
2

1

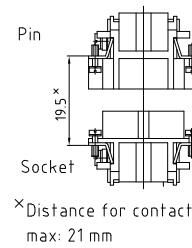
THIS DRAWING IS UNPUBLISHED. RELEASED FOR PUBLICATION  
 COPYRIGHT © BY TYCO ELECTRONICS CORPORATION. ALL INTERNATIONAL RIGHTS RESERVED.

LOC	DIST	REVISIONS				
P	LTR	DESCRIPTION	DATE	DWN	APVD	
	A3	UL-File erfüllt EGD0-0218-03 UL-file removed	29.09.03	SR	SM	
	A4	REVISED PER ECO-11-002591	11FEB11	HMR	MM	

Maßbild  
Outline drawing

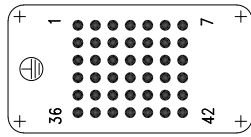


Assembly reference



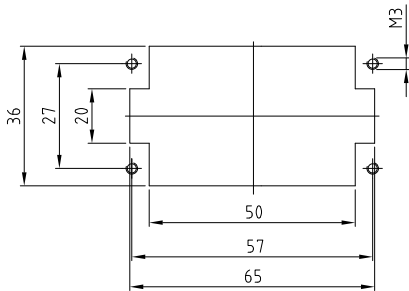
Kontaktanordnung  
Contact arrangement

Ansicht Anschlußseite  
view from termination side



Montageausschnitt  
Panel cut-out for contact insert

bei Verwendung ohne Gehäuse  
when used without housing



Notes,

- ⚠ Material: insert, PC
- ⚠ Finish: contact; Ag, Au

Bemerkungen,

- ⚠ Material: Einsatz: PC
- ⚠ Oberfläche: Kontakte; Ag, Au

1	Pin Insert HN.2D.42 Crimp	⚠	dark gray	1	-
2-3	DESCRIPTION / BENENNUNG	MATERIAL	COLOR / FARBE	ITEM NO. PDS.	REMARKS / BEMERKUNGEN
HN.2D.4.2.Sti.C ORDERING TEXT / BESTELLTEXT	THIS DRAWING IS A CONTROLLED DOCUMENT.				
	DWN Schneider 10.11.1997		Tyco Electronics Tyco Electronics Corporation Harrisburg, Pa 17105-3608		
	DIMENSIONS: mm		NAME MALE INSERT STIFTEINSATZ HN.2D.42		
	TOLERANCES UNLESS OTHERWISE SPECIFIED: GENERAL TOLERANCES: 1 ISO 2768 - mS - t 2 ISO 2768 - mS - t 3 ISO 2768 - mS - t 4 ISO 2768 - mS - t ANGLES ± -		PRODUCT SPEC		
APPLICATION SPEC		SIZE CAGE CODE DRAWING NO			
MATERIAL		WEIGHT 53g		A3 00779 C-1103204	
FINISH		CUSTOMER DRAWING			RESTRICTED TO
				SCALE 1:1	SHEET 1 OF 1 REV A4