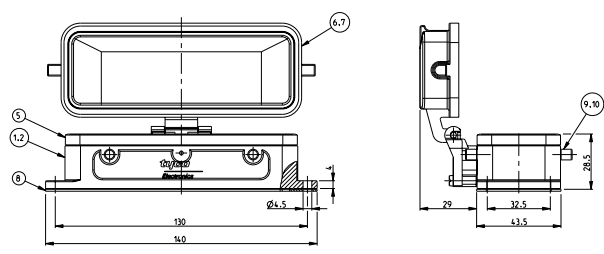
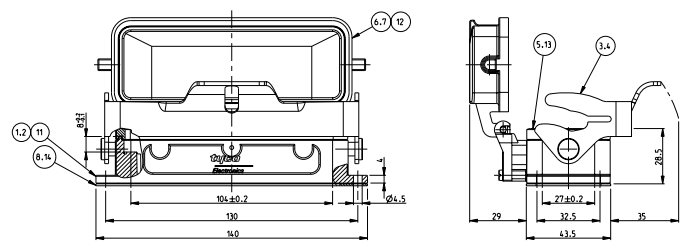


REV	DATE	DESCRIPTION	BY	CHK	APP
B7	03.04.2000	RELEASED AS PER ECR 08-03365	CJ		TS
B6	07.02.97	RELEASED AS PER ECR-07-0344B	SP		TS

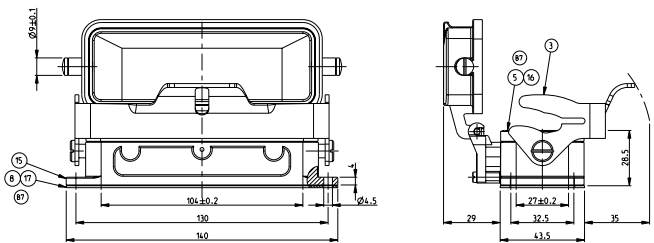
PN 1-6 & 2-6



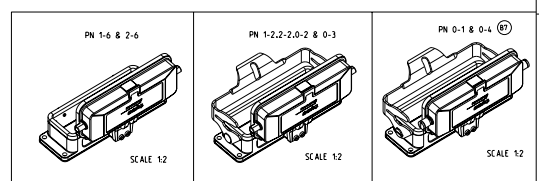
PN 1-2-2-2-0-2 & 0-3



PN 0-1 & 0-4 (B7)

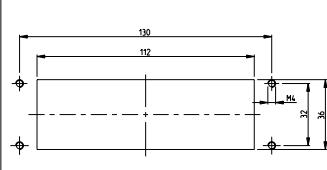
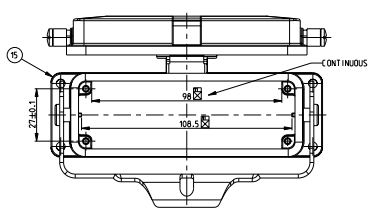


- NOTES
- ▲ MATERIAL: HOUSING-ALUMINIUM DIECASTING ALLOY  
SEALS: NEOPRENE
  - ▲ SURFACE: VARNISH - ALUMINIUM OXIDE -  
VARNISH BLACK  
GREY
  - 3 VARNISH ON THE INSIDE NOT NECESSARY
  - ▲ WITHOUT TE LOGO
  - 5 PACKAGING QUANTITY: 5 PIECES IN A BOX



LANDING MILLED OFF

PANEL CUT-OUT



QTY	DESCRIPTION	MATERIAL	SURFACE	COLOR	TEW	REMARKS						
1	FLANGE SEAL	NITRON		BLACK	17							
1	PROFILE SEAL			BLACK	16							
1	SURFACE MOUNTED HOUSING BOTTOM ENTRY HB	ALUMINIUM		GREY	15							
1	FLANGE SEAL	NEOPRENE		BLACK	14	CONDUCTIVE						
1	PROFILE SEAL			BLACK	13	CONDUCTIVE						
1	COVER HB	ALUMINIUM	Chromi. AL PASSIVATION	BLACK	12							
1	SURFACE MOUNTED HOUSING BOTTOM ENTRY HB	ALUMINIUM	Chromi. AL PASSIVATION	BLACK	11							
1	VS-(CLIP BODY)	STAINLESS STEEL		BLANK	10							
1	VS-(CLIP BODY)	STEEL	ZINC PLATED	BLUE	9							
1	1	1	1	1	1	1	FLANGE SEAL	NEOPRENE		BLACK	8	
1	1	1	1	1	1	1	COVER HB-K	ALUMINIUM	ALUMINIUM OXIDE	BLACK	7	
1	1	1	1	1	1	1	COVER HB	ALUMINIUM	GREY	6		
1	1	1	1	1	1	1	PROFILE SEAL	NEOPRENE		BLACK	5	
1	1	1	1	1	1	1	1/8-SIDE CLIP	STAINLESS STEEL	BLANK	4		
1	1	1	1	1	1	1	1/8-SIDE CLIP	STEEL	ZINC PLATED	BLUE	3	
1	1	1	1	1	1	1	SURFACE MOUNTED HOUSING BOTTOM ENTRY HB-K	ALUMINIUM	ALUMINIUM OXIDE	BLACK	2	
1	1	1	1	1	1	1	SURFACE MOUNTED HOUSING BOTTOM ENTRY HB	ALUMINIUM	GREY	1		

REV	DATE	DESCRIPTION	MATERIAL	SURFACE	COLOR	TEW	REMARKS
B7	03.04.2000						
B6	07.02.97						

ORDERING TEXT

TECHNICAL	DATE	03.04.2000	TECH ELECTRONICS
DESIGN	DATE	03.04.2000	TECH ELECTRONICS
PRODUCTION	DATE	03.04.2000	TECH ELECTRONICS
REVISION	DATE	03.04.2000	TECH ELECTRONICS

Customer Drawing: SURFACE MOUNTED HOUSING BOTTOM ENTRY HB-24-AGD