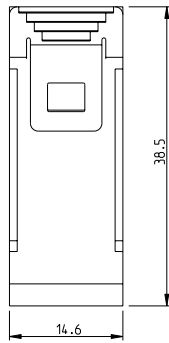
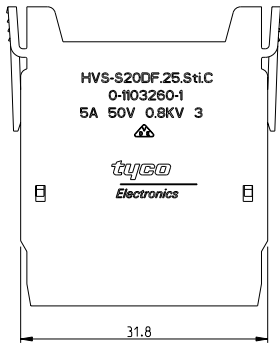
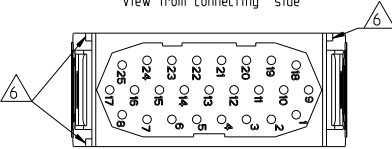


THIS DRAWING IS UNPUBLISHED. RELEASED FOR PUBLICATION 2000  
 © COPYRIGHT 2000 BY TYCO ELECTRONICS CORPORATION. ALL RIGHTS RESERVED.

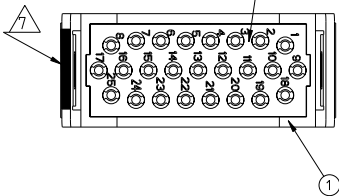
LOC	DIST	REVISIONS			
P	LTR	DESCRIPTION	DATE	DNW	APVD
B1		ECR-10-021590	25.10.2010	SR	OH

PN 0-1 As Shown

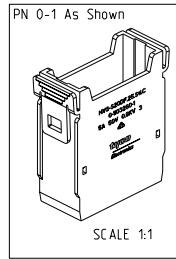
Contact arrangement  
view from connecting side



Contact arrangement  
view from termination side



- NOTES
- SUITABLE CRIMP CONTACTS: SERIES S20DF  
CATALOG: 889745  
OUTER DIMENSIONS OF INSULATION: MAX. Ø1.6mm
  - SUITABLE MODULE FIXING FRAME: SERIES HVS SIZE 3 TO 8  
CUSTOMER DRAWING: 1103250
  - SUITABLE INSERTION TOOL:  
CUSTOMER DRAWING: 1102855
  - SUITABLE EXTRACTION TOOL:  
CUSTOMER DRAWING: 1102855
  - STANDARDS:  
DIN EN 61984; DIN EN 60664-1
  - POLARIZATION RIBS
  - MARKING OF POLARIZATION ACCORDING TO MARKING OF  
MODULE FRAME
  - PACKAGING:  
10 SETS IN A CARTON. PRE-MOUNTED



QTY	DESCRIPTION	MATERIAL	COLOR	ITEM NO
1	MALE INSERT	PC-GF20	LYGHT GREY	HVS-S20DF-25.ST1.C
1	CLIP INSERT	PC-GF20	LYGHT GREY	HVS-S20DF-25

<small>THIS DRAWING IS A CONTROLLED DOCUMENT FOR TYCO ELECTRONICS CORPORATION          IT IS SUBJECT TO CHANGE AND THE CONTROLLING ENGINEERING ORGANIZATION          SHOULD BE CONTACTED FOR THE LATEST REVISION.</small>		DWN <b>SCHNEIDER</b> 17.02.2006 CHK <b>A.GAST</b> 17.02.2006 APVD <b>T.SCHNURPFEL</b> 17.02.2007	Tyco Electronics AMP GmbH 53757 Sankt Augustin, Germany
DIMENSIONS: mm 	TOLERANCES UNLESS OTHERWISE SPECIFIED: 0 PLC ± 1 PLC ± 2 PLC ± 3 PLC ± 4 PLC ± AMPERS ±	NAME <b>MALE INSERT ASSY          HVS-S20DF-25.ST1.C</b>	RESTRICTED TO
MATERIAL 	FINISH 	PRODUCT SPEC <b>108-74079</b> APPLICATION SPEC <b>114-74081</b> WEIGHT <b>A3</b>	
CUSTOMER DRAWING		SIZE CAGE CODE DRAWING NO <b>A3 00779 C-1103260</b>	SCALE 2:1 SHEET 1 OF 1 REV B1

AMP 1470-19 REV 31MAR2000

Pro/ENGINEER DRAWING