

4

3



2

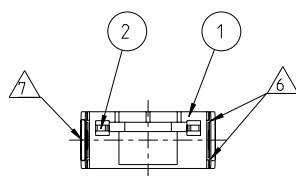
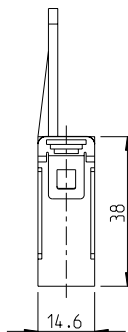
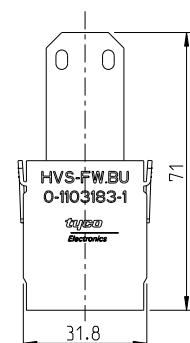
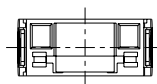
1

THIS DRAWING IS UNPUBLISHED. RELEASED FOR PUBLICATION 2009  
 © COPYRIGHT 2009 BY TYCO ELECTRONICS CORPORATION. ALL INTERNATIONAL RIGHTS RESERVED.

LOC	DIST	REVISIONS					
		P	LTR	DESCRIPTION	DATE	DNW	APVD
A1	-	A2		ECR-09-012227	06NOV2009	SR	AR
		B1		ECR-10-020122	23SEP2010	SR	OH

## NOTES

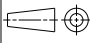
- SUITABLE CRIMP CONTACTS: SERIES FW CATALOG: 889745
- SUITABLE MODULE FIXING FRAME: SERIES HVS SIZE 3 TO 8 CUSTOMER DRAWING: 1103250
- SUITABLE INSERTION TOOL: CUSTOMER DRAWING: 1102855
- SUITABLE EXTRACTION TOOL: CUSTOMER DRAWING: 1102855
- STANDARDS: DIN EN 61984; DIN EN 60664-1
-  POLARISATIONS RIPS
-  MARKING OF POLARISATION ACCORDING MARKING OF MODULE FRAME
- PACKAGING: 10 SETS IN A CARTON. PRE-MOUNTED



PN 0-1 AS SHOWN

QTY.	DESCRIPTION	MATERIAL	COLOR	NOTE	ITEM
1	ASSY LEITERPLATTE FW	NORM			2
1	FEMALE INSERT	PC-GF20	GREY		1

## PARTS LIST

DIMENSIONS:	TOLERANCES UNLESS OTHERWISE SPECIFIED:	OWN	CHK	DATE	NAME	COMPANY	ADDRESS
mm	0 PLC ± 1 PLC ± 2 PLC ± 3 PLC ± 4 PLC ± ANGLES ±°	06NOV2009	SCHNURPFEL	12.11.2006		Tyco Electronics	Tyco Electronics AMP GmbH 64625 Bensheim (Germany)
		FG000852					FEMALE INSERT HVS-FW.BU
MATERIAL	FINISH						
							SIZE CAGE CODE DRAWING NO RESTRICTED TO A3 00779 C=1103183 -
							CUSTOMER DRAWING SCALE 5:1 SHEET 1 OF 1 REV B1

1470-19 (2/09)

Pro/ENGINEER DRAWING