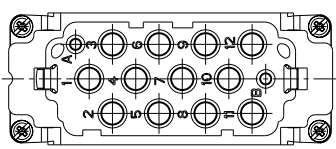


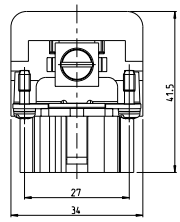
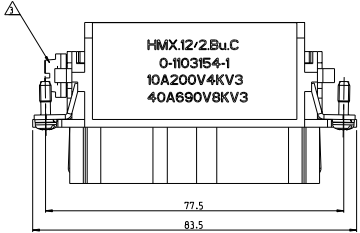
REV	DATE	DESCRIPTION	BY	CHK	APP
B1	ECR-09-020756				

CONTACT ARRANGEMENT VIEW FROM TERMINATION SIDE

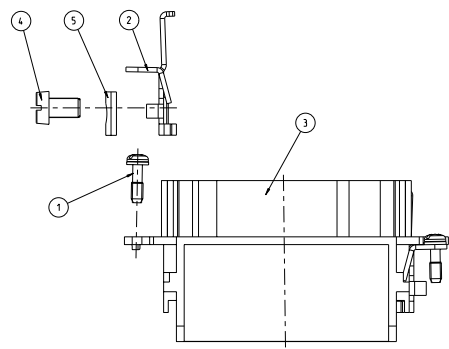
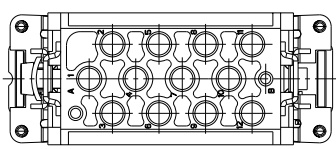


NOTES

- 1 POWER CONTACT : 1 TO 12
OUTER DIMENSIONS OF INSULATION: MAX. Ø6.5mm
SIGNAL CONTACT: A AND B
OUTER DIMENSIONS OF INSULATION: MAX. Ø3.2mm
- 2 SUITABLE HOOD SIZE 6
SERIES HB, HD, EMV, AND HIP
- △ GROUNDING CONTACT
- 4 STANDARDS:
DIN EN 61984; DIN EN 60664-1
- 5 PACKAGING:
5 PIECES IN A CARTON BOX



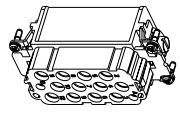
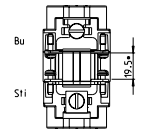
CONTACT ARRANGEMENT VIEW FROM CONNECTING SIDE



PANEL CUT-OUT FOR CONTACT INSERT WHEN USED WITHOUT HOUSING



40 DISTANCE ARRANGEMENT VIEW FROM TERMINATION SIDE



QTY	DESCRIPTION	MATERIAL	SURFACE	ITEM
1	CLIP TAB	STEEL	NICKEL PLATED	5
1	CYLINDER SCREW, M5	STEEL	NICKEL PLATED	4
1	FEMALE INSERT	PBT GF30	VDI 3400-24	3
2	GROUNDING CONTACT-SOCKET	BRASS	Cu/Ni Sb	2
4	FIXING SCREW	STEEL	Ni	1

THIS DRAWING IS A CONTROLLED DOCUMENT. DATE: 09/20/2007

REVISIONS: 1. SCHEMATIC DATE: 09/20/2007

DATE: 09/20/2007

DESCRIPTION: FEMALE INSERT ASSY HMX.12/2.Bu.C

ITEM: FEMALE INSERT ASSY

SIZE: A

SCALE: 1:1

DATE: 09/20/2007

DESIGNER: A

CHECKER: A

APPROVER: A

CUSTOMER DRAWING: 5.1

REV: 1

FIG: B1