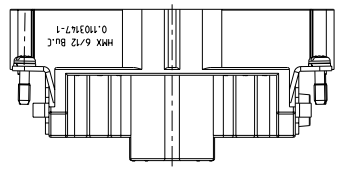
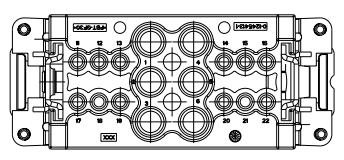


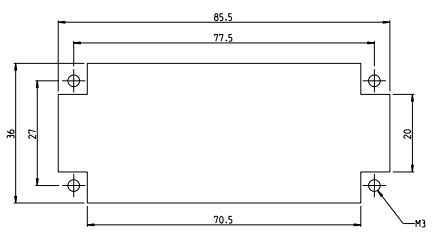
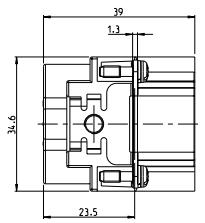
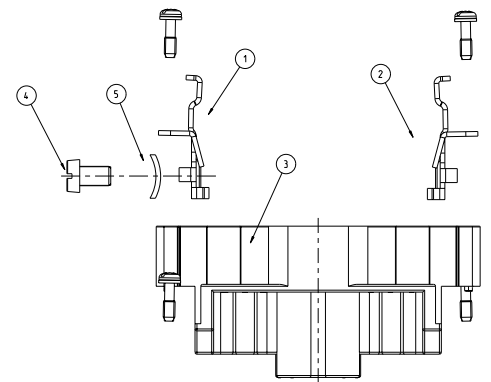
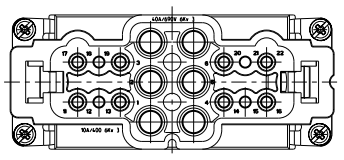
DATE DRAWING TO IMPROVEMENTS RECEIVED FOR PUBLICATION
 (C) CONFIDENTIAL ALL RIGHTS RESERVED

REV	DATE	DESCRIPTION	BY	CHK	APP
C1	ECR-09-020756		SPR2020	SR	EM

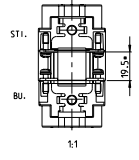
CONTACT ARRANGEMENT VIEW FROM TERMINATION SIDE



CONTACT ARRANGEMENT VIEW FROM CONNECTING SIDE

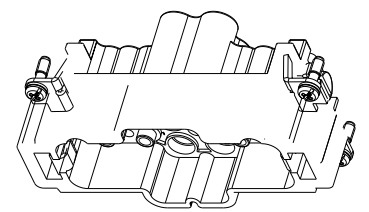


•DISTANCE FOR GUARANTEED CONTACT
 2mm MAX.



NOTES

- POWER CONTACT: 1 TO 6
 OUTER DIMENSIONS OF INSULATION: MAX. 6.5MM
 SIGNAL CONTACT: 11 TO 22
 OUTER DIMENSIONS OF INSULATION: MAX. 3.2MM
- SUITABLE HOOD SIZE 6
 SERIES HB, HD, EMV.
- STANDARDS:
 DIN EN 61984; DIN EN 60664-1
- PACKAGING:
 5 PIECES IN A CARTON BOX



QTY	DESCRIPTION	MATERIAL	SURFACE	ITEM
1	CLIP TAB	STEEL	NICKEL PLATED	5
1	CYLINDER SCREW, M5	STEEL	NICKEL PLATED	4
1	PIN HOUSING	VALDX 420SE0	VDI 3400-24	3
2	GROUNDING CONTACT-SOCKET	Cu Zn37 F38	Cu/Ni Sd	2
4	FIXING SCREW ASSY	St.8.8	Ni	1

THIS DRAWING IS A CONTROLLED DOCUMENT. Q: 1

SCALE USED: 1:1

TE Connectivity

PIN INSERT HMX 6/12 STI.C
 HMX 6/12 STI.C

SIZE: A | CASE CODE: 00779 | DRAWING NO: 1103146

CUSTOMER DRAWING