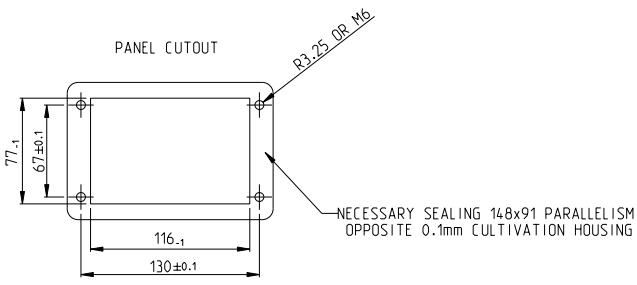
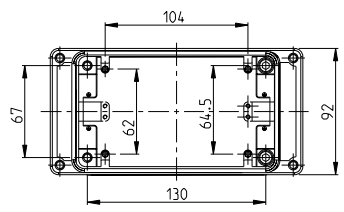
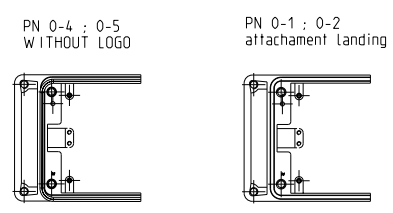
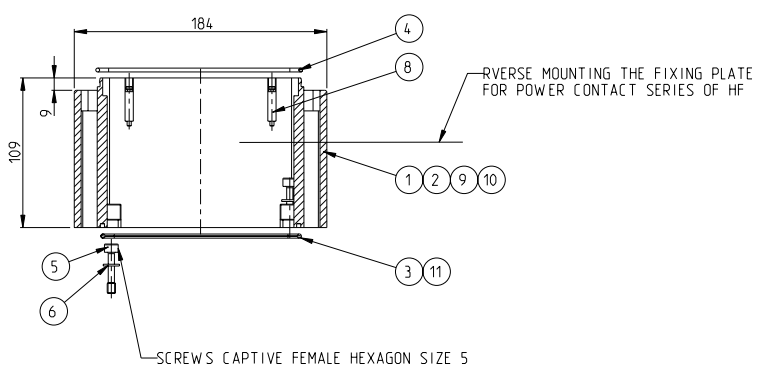


REVISONS		DATE	BY	APPROV
P	LYR	DESCRIPTION		
B5	ECR-08-031071		27NOV2008	SR BR



TORQUE	
M3	- 1.5 Nm
M4	- 2.7 Nm
M5	- 5.4 Nm
M6	- 9.3 Nm

- NOTES
- PART SHALL BE FREE AND CLEAN OF BURRS AND OTHER FOREIGN MATERIAL
 - PACKAGING: QUANTITY 3 PIECES
 - VARNISHING INSIDE HOUSING NOT REQUIRED

QTY	DESCRIPTION	MATERIAL	SURFACE	COLOR	ITEM	NOTES
1	FLANGED SEAL	NEOPRENE		BLACK	11	
1	SURFACE MOUNTED HOUSING SIDE ENTRY	ALU	HART COAT	BLACK	10	
1	SURFACE MOUNTED HOUSING SIDE ENTRY	ALU	YELLOW CHROMATES	BLACK	9	
4	FIXING SCREW M3x27	V2A			8	MOUNTED
	FIXING SCREW	STEEL	ZINC PLATED		7	MOUNTED
4	SPRING RING	V2A			6	MOUNTED
4	SCREW M6x30	V2A			5	MOUNTED
1	PROFIL SEAL	NEOPRENE		BLACK	4	MOUNTED
1	FLANGED SEAL	NEOPRENE		BLACK	3	MOUNTED
1	SURFACE MOUNTED HOUSING SIDE ENTRY	ALU	HART COAT	BLACK	2	
1	SURFACE MOUNTED HOUSING SIDE ENTRY	ALU	YELLOW CHROMATES	BLACK	1	
0-5	0-4	0-3	0-2	0-1	DESCRIPTION	
					MATERIAL	SURFACE
					COLOR	ITEM
					NOTES	
					HF-EMV-K.AG.12	
					HF-HIP-K.AG.12	
					SET-HF-EMV-K.AG.12	
					HF-EMV-K.AG.12	
					HF-HIP-K.AG.12	

DIMENSIONS: mm		OPERATING SPECIFICATIONS		DATE: 27NOV2008		DWG: R. SCHNEIDER		TYCO ELECTRONICS	
MATERIAL: -		WEIGHT: -		PRODUCT SPEC: -		APPLICATION SPEC: -		TYCO ELECTRONICS	
CUSTOMER DRAWING		SCALE: 0.5		SHEET: 1 of 1		REV: B5		TYCO ELECTRONICS	