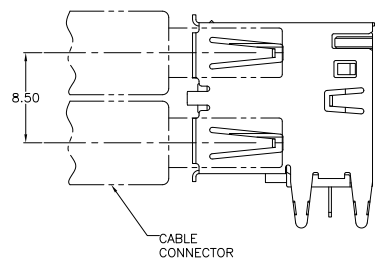
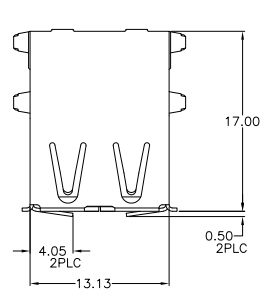
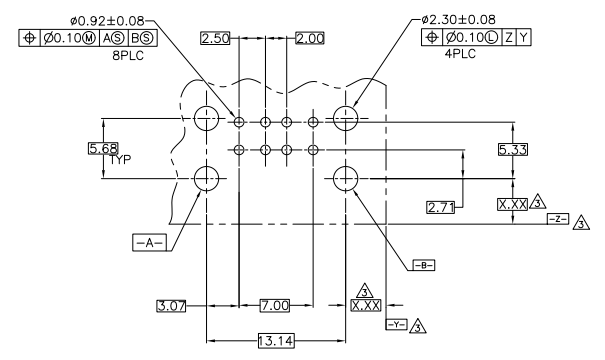
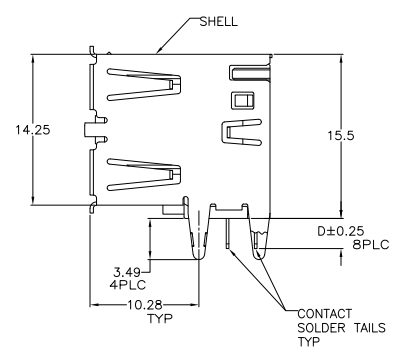
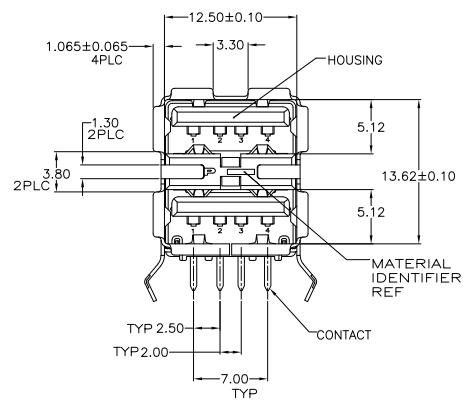


THIS DRAWING IS UNPUBLISHED. RELEASED FOR PURCHASER.
 © 2008 BY TYS ELECTRONICS CORPORATION. ALL RIGHTS RESERVED.

REV	DATE	DESCRIPTION	BY	APP
ES	00			
E		REVISED PER EDR-08-014128	DAKANG	A.L.S.Y



△ MATERIAL:
 SHELL & CONTACT—COPPER ALLOY
 HOUSING—UL 94V-0 RATED, THERMOPLASTIC,SEE TABLE
 △ PLATING:
 CONTACT—0.076um MIN. GOLD OVER 0.76um MIN.
 PALLADIUM-NICKEL ON MATING AREA ,OR CONTACT ALTERNATE
 PLATING 0.76um MIN. GOLD ON MATING AREA.
 3.8um MIN. MATTE TIN ON SOLDER TAILS.
 BOTH OVER 1.27um MIN. NICKEL.
 SHELL:2~6.5um MIN. BRIGHT TIN.
 △ DATUM AND BASIC DIMENSIONS ESTABLISHED BY CUSTOMER.
 △ RECOMMENDED PC BOARD THICKNESS 1.57.



RECOMMENDED PC BOARD MOUNTING DIMENSIONS

NO	3.24	BLACK	292323-6
YES	2.29	BLACK	292323-5
YES	2.84	BLACK	292323-4
NO	2.84	NATURAL	292323-3
NO	2.29	BLACK	292323-2
NO	2.84	BLACK	292323-1

HIGH TEMPERATURE COMPATIBLE	D	HOUSING COLOR	PART NUMBER

THIS DRAWING IS A CONTROLLED DOCUMENT.		DESIGNED BY	APPROVED BY	TYS Electronics Corporation Shanghai, P.R.China, 200233	
DATE	14-40054	DATE	14-40054	REV	1
DESCRIPTION	RECEPTACLE ASSEMBLY RIGHT ANGLE STACKED THRU-HOLE USB	DATE	08-1586	REV	1
DATE	14-40054	DATE	08-1586	REV	1
DESCRIPTION	RECEPTACLE ASSEMBLY RIGHT ANGLE STACKED THRU-HOLE USB	DATE	08-1586	REV	1
DATE	14-40054	DATE	08-1586	REV	1