

4

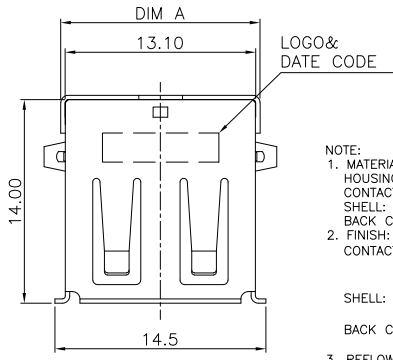
3

2

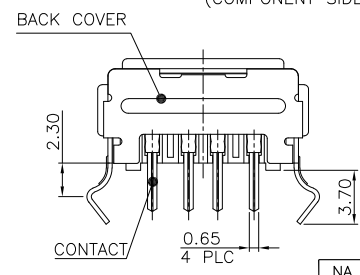
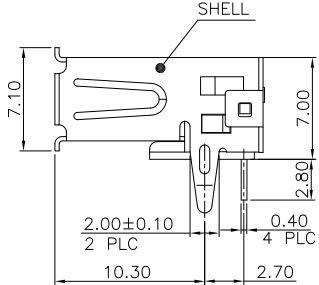
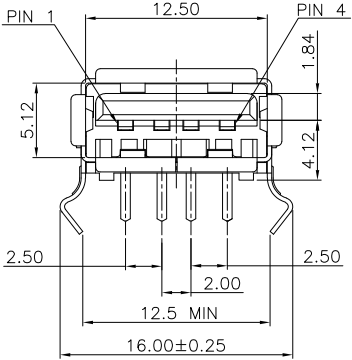
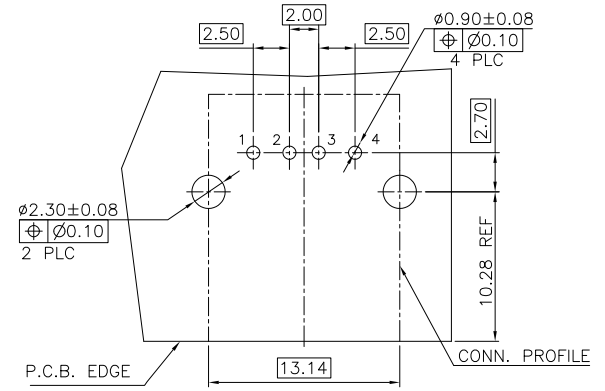
1

THIS DRAWING IS UNPUBLISHED. RELEASED FOR PUBLICATION  
 © COPYRIGHT - BY - ALL RIGHTS RESERVED.

LOC	DIST	REVISIONS			
P	LTR	DESCRIPTION	DATE	DWN	APVD
E1		REVISED PER ECO-11-005301	07MAR11	RK	HMR



NOTE:  
 1. MATERIAL:  
 HOUSING: PA9T WITH 30%GF, UL94V-0, BLACK COLOR.  
 CONTACT: PHOSPHOR BRONZE.  
 SHELL: BRASS.  
 BACK COVER: BRASS.  
 2. FINISH:  
 CONTACT: 0.762μm [30μ"] MIN. GOLD PLATING ON CONTACT AREA.  
 3.048μm [120μ"] MIN. BRIGHT TIN PLATING ON SOLDERTAILS.  
 1.27μm [50μ"] MIN. NICKEL UNDERPLATING OVERALL.  
 SHELL: 0.762μm [30μ"] MIN. NICKEL PLATED OVER  
 0.762μm [30μ"] MIN. Cu UNDERPLATING OVERALL.  
 BACK COVER: 0.762μm [30μ"] MIN. NICKEL PLATED OVER  
 0.762μm [30μ"] MIN. Cu UNDERPLATING OVERALL.  
 3. REFLOW SOLDER CAPABLE TO 260°C PER TE CONNECTIVITY SPEC 109-201, CONDITION B.



RECOMMEND P.C.B LAYOUT (THICKNESS=1.6mm)  
 (COMPONENT SIDE) TOLERANCE±0.05

NA	W/O	TRAY	1734081-2
13.7	W/	TRAY	1734081-1
DIM.A	BACK COVER	PACKAGE	PART NUMBER

THIS DRAWING IS A CONTROLLED DOCUMENT.

DIMENSIONS:	TOLERANCES UNLESS OTHERWISE SPECIFIED:	DWN	21SEP2004	TE Connectivity USB CONNECTOR, RECEPTACLE 4 POSITION, SERIES A			
MM		CHK	21SEP2004				
		APVD	21SEP2004				
		NAME					
		PRODUCT SPEC	108-57505				
		APPLICATION SPEC	501-57579				
MATERIAL	FINISH	WEIGHT	2.01 GRAMS	SIZE	CAGE CODE	DRAWING NO	RESTRICTED TO
SEE NOTE	SEE NOTE	CUSTOMER DRAWING		A3	00779	C=1734081	
			SCALE	SHEET	1 of 19	REV	E 1

4

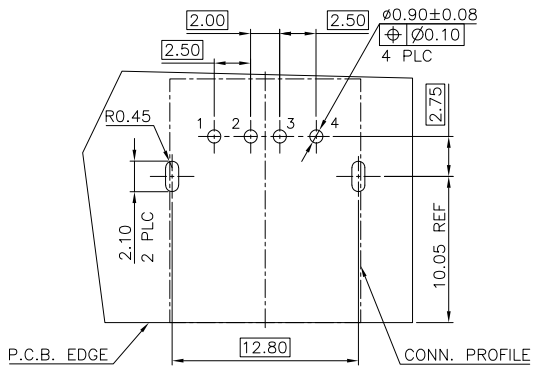
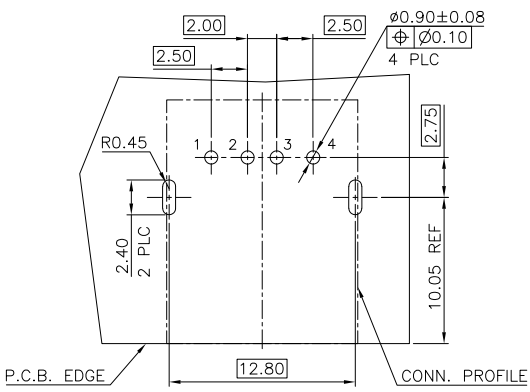
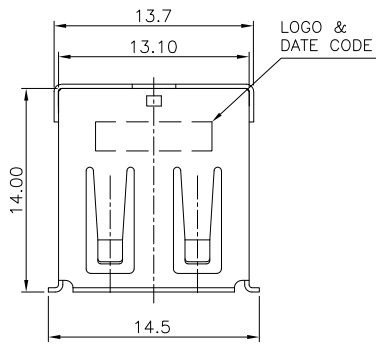
3

2

1

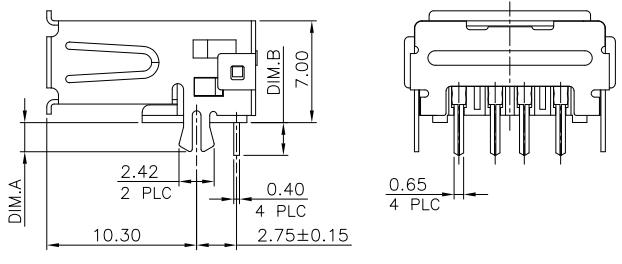
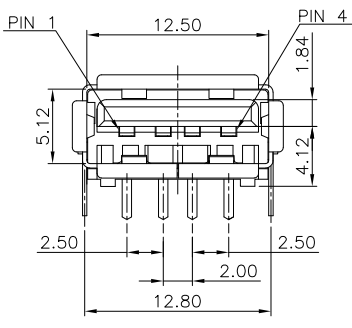
THIS DRAWING IS UNPUBLISHED. RELEASED FOR PUBLICATION  
 © COPYRIGHT - BY - ALL RIGHTS RESERVED.

LOC		DIST		REVISIONS				
P	LTR	DESCRIPTION	DATE	DWN	APVD			
-	-	SEE SHEET 1.	-	-	-			



RECOMMEND P.C.B LAYOUT (THICKNESS=1.6mm)  
 (COMPONENT SIDE) TOLERANCE±0.05 FOR DIM.A=2.4

RECOMMEND P.C.B LAYOUT (THICKNESS=1.4~1.6mm)  
 (COMPONENT SIDE) TOLERANCE±0.05 FOR DIM.A=2.0



HSG. MATERIAL	HSG. COLOR	DIM A	DIM B	PACKAGE	PART NUMBER
△PA-46	MOON GRAY	2.0	2.25	T&R	1-1734081-4
		2.4	2.25	T&R	1-1734081-3
△PA-9T	BLACK	2.0	1.5	T&R	1-1734081-5
			2.25	T&R	1-1734081-2
				TRAY	1-1734081-1

NOTE:  
 1. MATERIAL:  
 HOUSING: THERMOPLASTIC (SEE TABLE) WITH 30%GF, UL94V-0, BLACK COLOR.  
 CONTACT: PHOSPHOR BRONZE.  
 SHELL: BRASS.  
 BACK COVER: BRASS.  
 2. FINISH:  
 CONTACT: 0.762µm [30µ"] MIN. GOLD PLATING ON CONTACT AREA,  
 3.048µm [120µ"] MIN. BRIGHT TIN PLATING ON SOLDERTAILS.  
 1.27µm [50µ"] MIN. NICKEL UNDERPLATING OVERALL.  
 SHELL: 0.762µm [30µ"] MIN. NICKEL PLATED OVER  
 0.762µm [30µ"] MIN. Cu UNDERPLATING OVERALL.  
 BACK COVER: 0.762µm [30µ"] MIN. NICKEL PLATED OVER  
 0.762µm [30µ"] MIN. Cu UNDERPLATING OVERALL.  
 △ REFLOW SOLDER CAPABLE TO 245°C PER TE CONNECTIVITY SPEC 109-201, CONDITION A.  
 ▽ REFLOW SOLDER CAPABLE TO 260°C PER TE CONNECTIVITY SPEC 109-201, CONDITION B.

THIS DRAWING IS A CONTROLLED DOCUMENT.

DIMENSIONS:	TOLERANCES UNLESS OTHERWISE SPECIFIED:	DWN	TE Connectivity		
MM	0 PLC ± -	CHK	NAME		
	1 PLC ± 0.35	APVD	USB CONNECTOR, RECEPTACLE 4 POSITION, SERIES A		
	2 PLC ± 0.25	PRODUCT SPEC	SIZE	CAGE CODE	DRAWING NO
	3 PLC ± 0.15	APPLICATION SPEC	A3	00779	1734081
	4 PLC ± -	WEIGHT	RESTRICTED TO		
	ANGLES ± 3°	2.01 GRAMS			
MATERIAL	FINISH	CUSTOMER DRAWING	SCALE	SHEET	REV
SEE NOTE	SEE NOTE			2 of 19	E 1

4

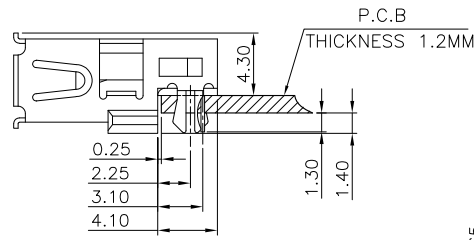
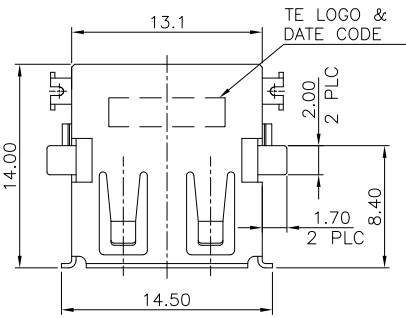
3

2

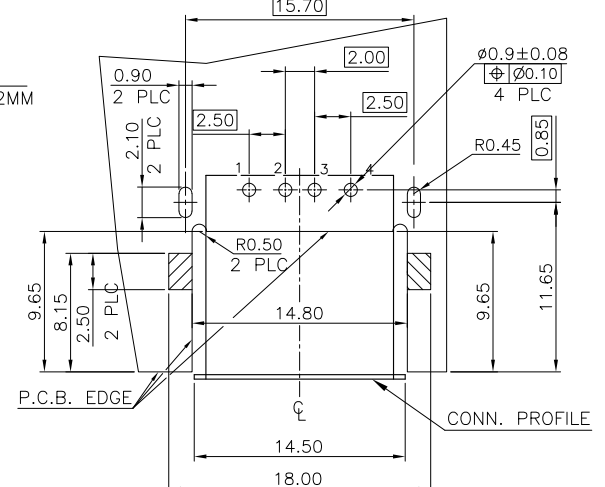
1

THIS DRAWING IS UNPUBLISHED. RELEASED FOR PUBLICATION  
 © COPYRIGHT - BY - ALL RIGHTS RESERVED.

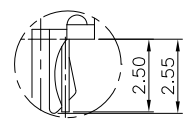
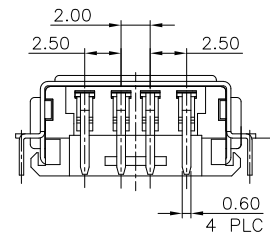
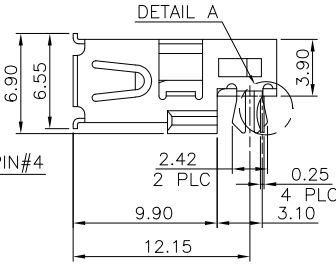
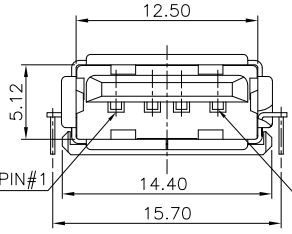
LOC	DIST	REVISIONS			
P	LTR	DESCRIPTION	DATE	DWN	APVD
DW		SEE SHEET 1.			



RECOMMENDED MOUNT DIMENSION



RECOMMEND P.C.B LAYOUT (THICKNESS=1.2mm)  
 (COMPONENT SIDE) TOLERANCE±0.05



DETAIL A  
 SCALE 2:1

- NOTE:
- MATERIAL:  
 HOUSING: PA9T WITH 30%GF, UL94V-0, BLACK COLOR.  
 CONTACT: PHOSPHOR BRONZE.  
 SHELL: BRASS.
  - FINISH:  
 CONTACT: 0.762µm [30µ] MIN. GOLD PLATING ON CONTACT AREA,  
 3.048µm [120µ] MIN. BRIGHT TIN PLATING ON SOLDERTAILS.  
 1.27µm [50µ] MIN. NICKEL UNDERPLATING OVERALL.  
 SHELL: 0.762µm [30µ] MIN. TIN PLATED OVER  
 0.762µm [30µ] MIN. Cu UNDERPLATING OVERALL.  
 0.762µm [30µ] MIN. NICKEL PLATED OVER  
 0.762µm [30µ] MIN. Cu UNDERPLATING OVERALL.
  - REFLOW SOLDER CAPABLE TO 260°C PER TE CONNECTIVITY SPEC 109-201, CONDITION B.

TAPE & REEL	2-1734081-3
TUBE	2-1734081-2
TUBE	2-1734081-1
SHELL PLATING	PACKAGE PART NUMBER

THIS DRAWING IS A CONTROLLED DOCUMENT.

DIMENSIONS: MM	TOLERANCES UNLESS OTHERWISE SPECIFIED: 0 PLC ± - 1 PLC ± 0.35 2 PLC ± 0.25 3 PLC ± 0.15 4 PLC ± - ANGLES ± 3°	DWN	CHK	APVD	PRODUCT SPEC	APPLICATION SPEC	NAME	SIZE	CAGE CODE	DRAWING NO	RESTRICTED TO
MATERIAL SEE NOTE	FINISH SEE NOTE	WEIGHT 1.57 GRAMS	CUSTOMER DRAWING	SCALE	SHEET	3 of 19	REV	E1	TE Connectivity USB CONNECTOR, RECEPTACLE 4 POSITION, SERIES A		

4

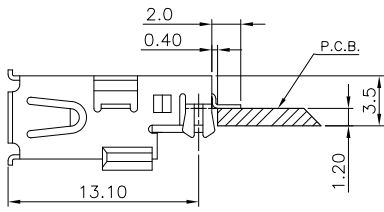
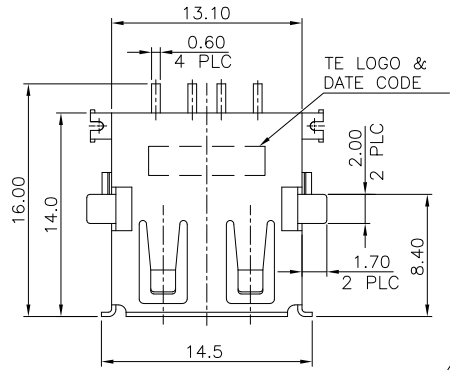
3

2

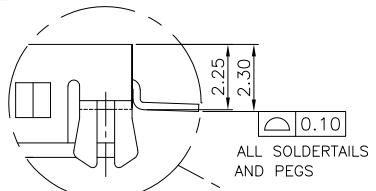
1

THIS DRAWING IS UNPUBLISHED. RELEASED FOR PUBLICATION  
 © COPYRIGHT - BY - ALL RIGHTS RESERVED.

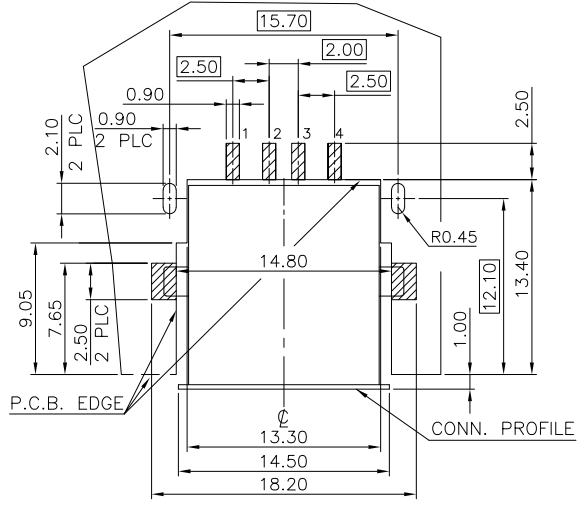
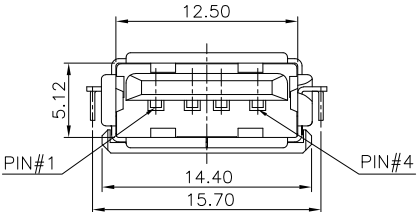
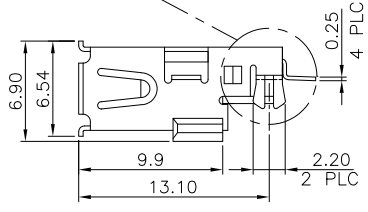
LOC	DIST	REVISIONS				
P	LTR	DESCRIPTION	DATE	DWN	APVD	
DW		SEE SHEET 1.				



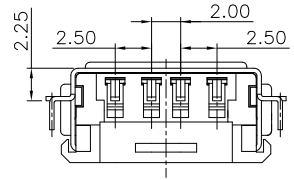
RECOMMENDED MOUNT DIMENSION



ALL SOLDER TAILS AND PEGS



RECOMMEND P.C.B LAYOUT (THICKNESS=1.2mm) (COMPONENT SIDE) TOLERANCE±0.05



TAPE & REEL	3-1734081-1
PACKAGE	PART NUMBER

NOTE:  
 1. MATERIAL:  
 HOUSING: PA9T WITH 30%GF, UL94V-0, BLACK COLOR.  
 CONTACT: PHOSPHOR BRONZE.  
 SHELL: BRASS.  
 2. FINISH:  
 CONTACT: 0.762µm [30µ"] MIN. GOLD PLATING ON CONTACT AREA.  
 3.048µm [120µ"] MIN. BRIGHT TIN PLATING ON SOLDER TAILS.  
 1.27µm [50µ"] MIN. NICKEL UNDERPLATING OVERALL.  
 SHELL: 0.762µm [30µ"] MIN. NICKEL PLATED OVER  
 0.762µm [30µ"] MIN. Cu UNDERPLATING OVERALL.  
 3. REFLOW SOLDER CAPABLE TO 260°C PER TE CONNECTIVITY SPEC 109-201, CONDITION B.

THIS DRAWING IS A CONTROLLED DOCUMENT.		DWN	TE Connectivity	
DIMENSIONS:		CHK	NAME	
MM	TOLERANCES UNLESS OTHERWISE SPECIFIED:	APVD	USB CONNECTOR, RECEPTACLE 4 POSITION, SERIES A	
0 PLC	± -	PRODUCT SPEC	SIZE	CAGE CODE
1 PLC	± 0.35	APPLICATION SPEC	A3	00779
2 PLC	± 0.25		DRAWING NO	1734081
3 PLC	± 0.15		RESTRICTED TO	
4 PLC	± -		WEIGHT	1.54 GRAMS
ANGLES	± 3°		CUSTOMER DRAWING	
MATERIAL	FINISH		SCALE	SHEET
SEE NOTE	SEE NOTE			4 of 19
				REV E 1

4

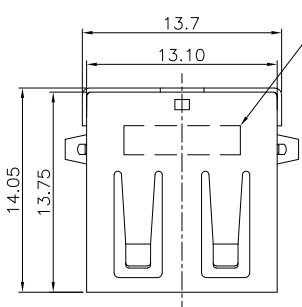
3

2

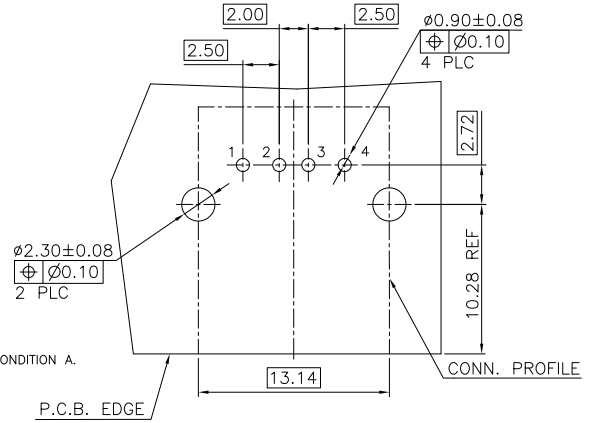
1

THIS DRAWING IS UNPUBLISHED. RELEASED FOR PUBLICATION  
 © COPYRIGHT - BY - ALL RIGHTS RESERVED.

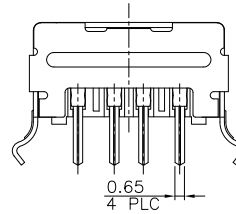
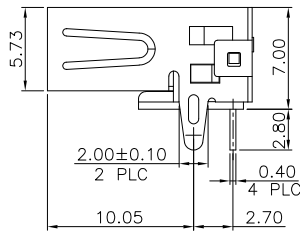
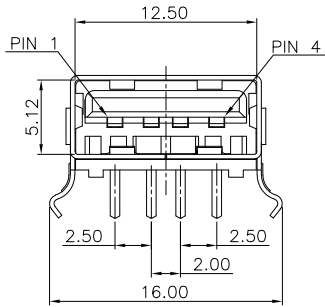
LOC	DIST	REVISIONS			
P	LTR	DESCRIPTION	DATE	DWN	APVD
-	-	SEE SHEET 1.	-	-	-



- NOTE:
- MATERIAL:  
 HOUSING: PBT WITH 30%GF, UL94V-0, COLOR: SEE TABLE.  
 CONTACT: PHOSPHOR BRONZE.  
 SHELL: BRASS.  
 BACK COVER: BRASS.
  - FINISH:  
 CONTACT: 0.762µm [30µ"] MIN. GOLD PLATING ON CONTACT AREA.  
 3.048µm [120µ"] MIN. BRIGHT TIN PLATING ON SOLDERTAILS.  
 1.27µm [50µ"] MIN. NICKEL UNDERPLATING OVERALL.  
 SHELL: 0.762µm [30µ"] MIN. NICKEL PLATED OVER  
 0.762µm [30µ"] MIN. Cu UNDERPLATING OVERALL.  
 BACK COVER: 0.762µm [30µ"] MIN. NICKEL PLATED OVER  
 0.762µm [30µ"] MIN. Cu UNDERPLATING OVERALL.
  - WAVE SOLDER CAPABLE TO 245°C PER TE CONNECTIVITY SPEC 109-202, CONDITION A.



RECOMMEND P.C.B. LAYOUT (THICKNESS=1.6mm)  
 (COMPONENT SIDE) TOLERANCE±0.05



TRAY	MOON GRAY	4-1734081-2
	NONMETALLIC PEARL	4-1734081-1
PACKAGE	HSG. COLOR	PART NUMBER

THIS DRAWING IS A CONTROLLED DOCUMENT.		DWN	TE Connectivity													
DIMENSIONS: MM		CHK	NAME													
TOLERANCES UNLESS OTHERWISE SPECIFIED:		APVD	USB CONNECTOR, RECEPTACLE 4 POSITION, SERIES A													
<table border="1"> <tr><td>0 PLC</td><td>± -</td></tr> <tr><td>1 PLC</td><td>± 0.35</td></tr> <tr><td>2 PLC</td><td>± 0.25</td></tr> <tr><td>3 PLC</td><td>± 0.15</td></tr> <tr><td>4 PLC</td><td>± -</td></tr> <tr><td>ANGLES</td><td>± 3°</td></tr> </table>		0 PLC	± -	1 PLC	± 0.35	2 PLC	± 0.25	3 PLC	± 0.15	4 PLC	± -	ANGLES	± 3°	PRODUCT SPEC	SIZE CAGE CODE DRAWING NO	
0 PLC	± -															
1 PLC	± 0.35															
2 PLC	± 0.25															
3 PLC	± 0.15															
4 PLC	± -															
ANGLES	± 3°															
MATERIAL SEE NOTE		APPLICATION SPEC	RESTRICTED TO													
FINISH SEE NOTE		WEIGHT 2.03 GRAMS	A3 00779 C=1734081													
		CUSTOMER DRAWING	SCALE	SHEET 5 of 19 REV E 1												

4

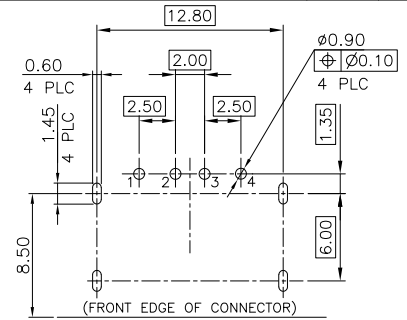
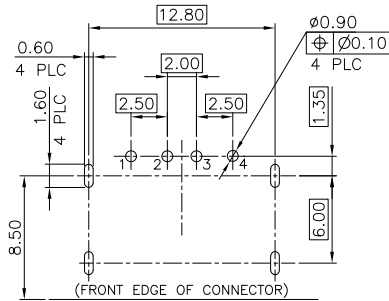
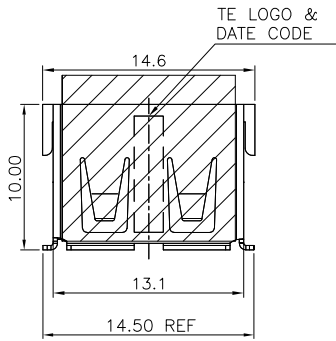
3

2

1

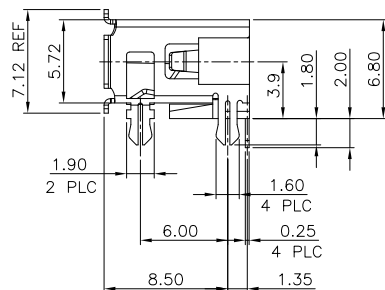
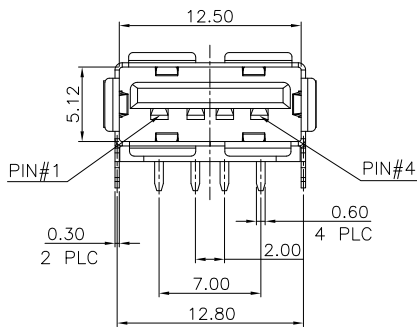
THIS DRAWING IS UNPUBLISHED. RELEASED FOR PUBLICATION  
 © COPYRIGHT - BY - ALL RIGHTS RESERVED.

LOC	DIST	REVISIONS				
P	LTR	DESCRIPTION	DATE	DWN	APVD	
-	-	SEE SHEET 1.	-	-	-	



RECOMMEND P.C.B LAYOUT (THICKNESS=1.4mm)  
 (COMPONENT SIDE) TOLERANCE±0.05

RECOMMEND P.C.B LAYOUT (THICKNESS=1.4mm)  
 (COMPONENT SIDE) TOLERANCE±0.05



NOTE:  
 1. MATERIAL:  
 HOUSING: PA9T WITH 30%GF, UL94V-0, BLACK COLOR.  
 CONTACT: PHOSPHOR BRONZE.  
 SHELL: BRASS.  
 MYLAR: KAPTON, 0.06 THICKNESS  
 2. FINISH:  
 CONTACT: 0.762µm [30µ"] MIN. GOLD PLATING ON CONTACT AREA,  
 2.54µm [100µ"] MIN. MATTE-TIN PLATING ON SOLDER TAIL,  
 WITH ENTIRE CONTACT UNDERPLATED 1.27µm [50µ"] MIN. NICKEL  
 SHELL: 1.27µm [50µ"] MIN. NICKEL PLATING.  
 3. FINISH:  
 CONTACT: 0.254µm [10µ"] MIN. GOLD PLATING ON CONTACT AREA,  
 2.54µm [100µ"] MIN. MATTE-TIN PLATING ON SOLDER TAIL,  
 WITH ENTIRE CONTACT UNDERPLATED 1.27µm [50µ"] MIN. NICKEL  
 SHELL: 1.27µm [50µ"] MIN. NICKEL PLATING.  
 SPUTTERING/BLACK PLATING IN FRONT FLANGE.  
 4. REFLOW SOLDER CAPABLE TO 260°C PER TE CONNECTIVITY TEST SPEC 109-201, CONDITION B.  
 5. CONNECTOR MOUNTING WITH ZERO INSERTION FORCE.

TAPE&REEL W/O MYLAR	5-1734081-3
TAPE&REEL W/ MYLAR	5-1734081-2
TAPE&REEL W/ MYLAR	5-1734081-1
FINISH	PACKAGE
	PART NUMBER

THIS DRAWING IS A CONTROLLED DOCUMENT.

DIMENSIONS: MM	TOLERANCES UNLESS OTHERWISE SPECIFIED: 0 PLC ± - 1 PLC ± 0.35 2 PLC ± 0.25 3 PLC ± 0.15 4 PLC ± - ANGLES ± 3°	DWN	CHK	APVD	PRODUCT SPEC	APPLICATION SPEC	NAME	SIZE	CAGE CODE	DRAWING NO	RESTRICTED TO
MATERIAL SEE NOTE	FINISH SEE NOTE	WEIGHT 1.54 GRAMS	A3	00779	C=1734081	CUSTOMER DRAWING	SCALE	SHEET	6 of 19	REV	E 1

**STE** TE Connectivity  
 USB CONNECTOR, RECEPTACLE  
 4 POSITION, SERIES A

4

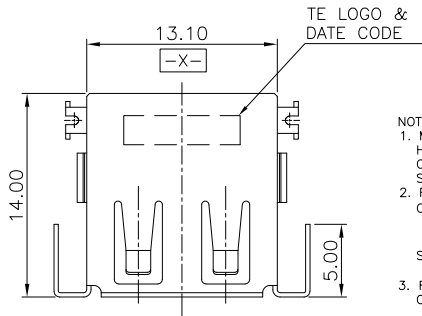
3

2

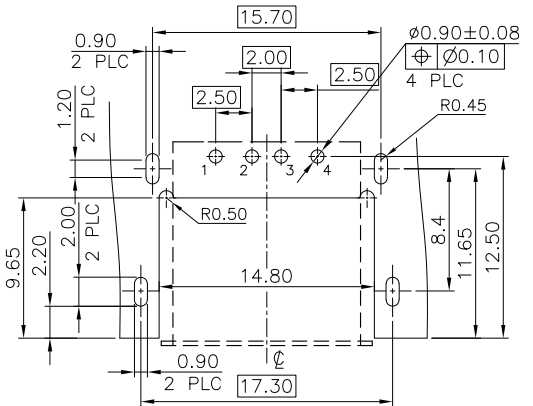
1

THIS DRAWING IS UNPUBLISHED. RELEASED FOR PUBLICATION  
 © COPYRIGHT - BY - ALL RIGHTS RESERVED.

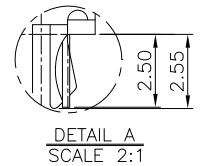
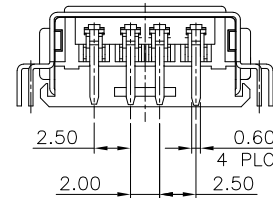
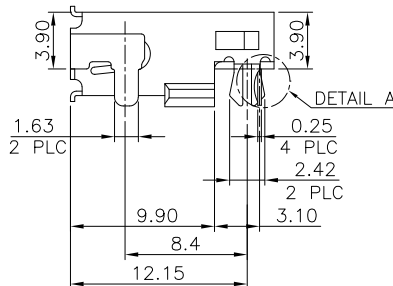
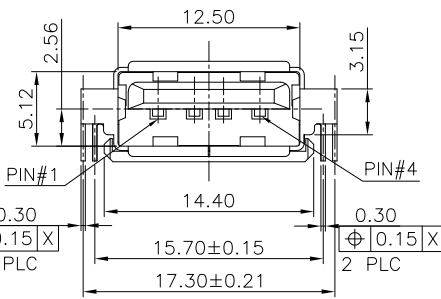
LOC	DIST	REVISIONS				
P	LTR	DESCRIPTION	DATE	DWN	APVD	
-	-	SEE SHEET 1.	-	-	-	



- NOTE:
- MATERIAL:  
 HOUSING: PA9T WITH 30%GF, UL94V-0, BLACK COLOR.  
 CONTACT: PHOSPHOR BRONZE.  
 SHELL: BRASS.
  - FINISH:  
 CONTACT: 0.762μm [30μ"] MIN. GOLD PLATING ON CONTACT AREA,  
 3.048μm [120μ"] MIN. BRIGHT TIN PLATING ON SOLDER TAILS.  
 1.27μm [50μ"] MIN. NICKEL UNDERPLATING OVERALL.  
 SHELL: 0.762μm [30μ"] MIN. NICKEL PLATED OVER  
 0.762μm [30μ"] MIN. Cu UNDERPLATING OVERALL.
  - REFLOW SOLDER CAPABLE TO 260°C PER TE CONNECTIVITY SPEC 109-201, CONDITION B.



RECOMMEND P.C.B LAYOUT (THICKNESS=1.6mm)  
 (COMPONENT SIDE) TOLERANCE±0.05



TAPE & REEL	6-1734081-2
TUBE	6-1734081-1
PACKAGE	PART NUMBER

THIS DRAWING IS A CONTROLLED DOCUMENT.		DWN	<b>STE</b> TE Connectivity			
DIMENSIONS: MM		CHK				
TOLERANCES UNLESS OTHERWISE SPECIFIED:		APVD	NAME USB CONNECTOR, RECEPTACLE 4 POSITION, SERIES A			
0 PLC ± -		PRODUCT SPEC				
1 PLC ± 0.35		APPLICATION SPEC	SIZE	CAGE CODE	DRAWING NO	RESTRICTED TO
2 PLC ± 0.25			A3	00779	C=1734081	-
3 PLC ± 0.15			WEIGHT 1.47 GRAMS		SCALE	SHEET
4 PLC ± -			CUSTOMER DRAWING		7	19
ANGLES ± 3°					REV	E1
MATERIAL	FINISH					
SEE NOTE	SEE NOTE					





4

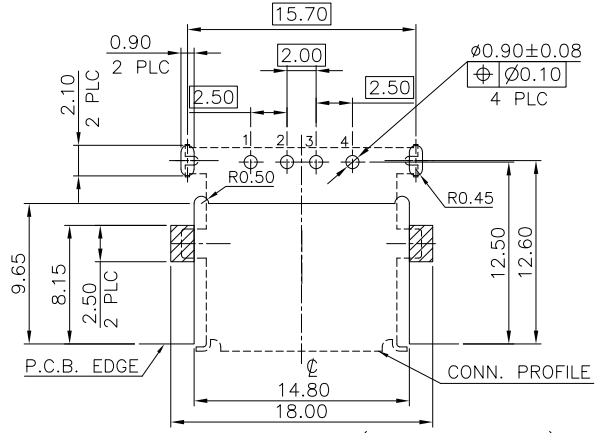
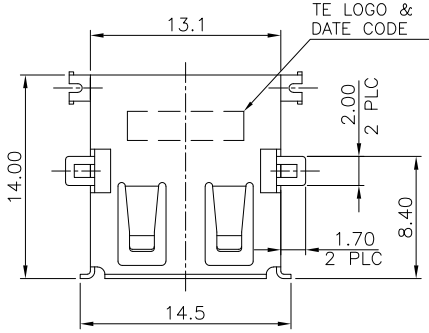
3

2

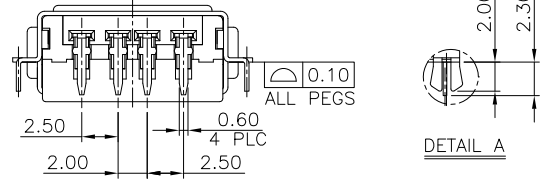
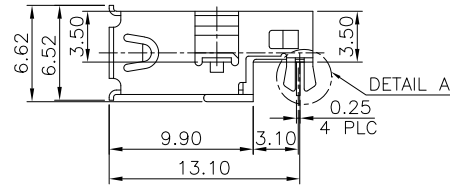
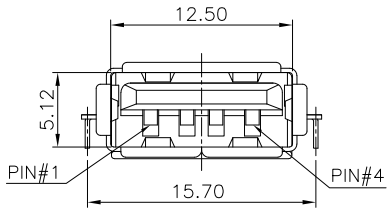
1

THIS DRAWING IS UNPUBLISHED. RELEASED FOR PUBLICATION  
 © COPYRIGHT - BY - ALL RIGHTS RESERVED.

LOC	DIST	REVISIONS				
P	LTR	DESCRIPTION	DATE	DWN	APVD	
DW		SEE SHEET 1.				



RECOMMEND P.C.B LAYOUT (THICKNESS=1.2mm)  
 (COMPONENT SIDE) TOLERANCE±0.05



- NOTE:  
 1. MATERIAL:  
 HOUSING: PA9T WITH 30%GF, UL 94V-0, BLACK COLOR.  
 CONTACT: PHOSPHOR BRONZE.  
 SHELL: BRASS.  
 2. FINISH:  
 CONTACT: 0.762µm [30µ"] MIN. GOLD PLATING ON CONTACT AREA,  
 3.048µm [120µ"] MIN. BRIGHT TIN PLATING ON SOLDERTAILS.  
 1.27µm [50µ"] MIN. NICKEL UNDERPLATING OVERALL.  
 SHELL: 0.762µm [30µ"] MIN. NICKEL PLATED OVER  
 0.762µm [30µ"] MIN. Cu UNDERPLATING OVERALL.  
 3. REFLOW SOLDER CAPABLE TO 260°C PER TE CONNECTIVITY  
 SPEC 109-201,  
 CONDITION B.

TAPE & REEL	7-1734081-1
PACKAGE	PART NUMBER

THIS DRAWING IS A CONTROLLED DOCUMENT.		DWN	<b>STE</b> TE Connectivity	
		CHK		
DIMENSIONS:		APVD	NAME	
TOLERANCES UNLESS OTHERWISE SPECIFIED:		PRODUCT SPEC		
MM	0 PLC ± -	APPLICATION SPEC	USB CONNECTOR, RECEPTACLE 4 POSITION, SERIES A	
	1 PLC ± 0.35			
	2 PLC ± 0.25	WEIGHT	1.57 GRAMS	RESTRICTED TO
	3 PLC ± 0.15	SIZE	A3	CAGE CODE
	4 PLC ± -	DRAWING NO	1734081	
	ANGLES ± 3°	CUSTOMER DRAWING		
MATERIAL	SEE NOTE	FINISH	SEE NOTE	SCALE
				SHEET
				9 of 19
				REV E1

4

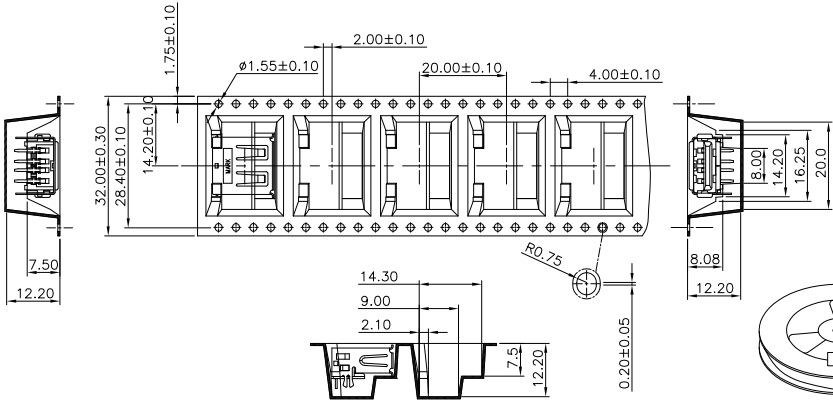
3

2

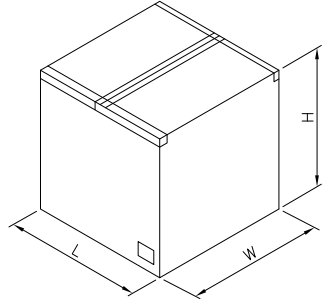
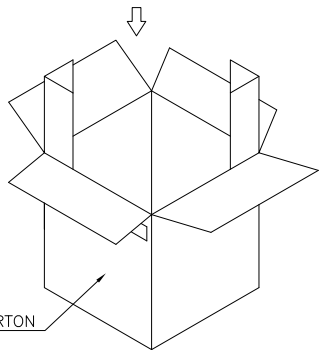
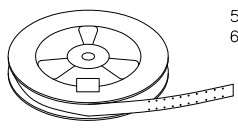
1

THIS DRAWING IS UNPUBLISHED. RELEASED FOR PUBLICATION  
 © COPYRIGHT - BY - ALL RIGHTS RESERVED.

LOC		DIST		REVISIONS				
P	LTR	DESCRIPTION			DATE	DWN	APVD	
-	-	SEE SHEET 1.			-	-	-	



- NOTES:
- MATERIAL:  
 REEL: PS.  
 EMBOSSED CARRIER: PS.  
 COVER TAPE: PBT.
  - DIMENSION :  
 TAPE REEL:  $\phi 330 \text{mm} \times 37.1 \text{mm}$   
 SHIPPING CARTON: L=350mm, W=350mm, H=350mm
  - QUANTITY :  
 PRIMARY PACKING: 250PCS/REEL  
 SECONDARY PACKING: 9 REELS/CARTON(2,250PCS).
  - WEIGHT :  
 NET WEIGHT: 0.50 KG/REEL, 4.52 KG/CARTON.  
 GROSS WEIGHT: 1.00 KG/REEL, 9.50 KG/CARTON.
  - PEELING RESISTANCE: 20G TO 130G.
  - PEELING SPEED: 300MM/MIN.



SHIPPING CARTON

9.50 Kg	4.52 Kg	250	9	2250	1-1734081-4
					1-1734081-3
					1-1734081-2
GROSS WEIGHT	NET WEIGHT	PCS/REEL	REELS/CARTON	QUANTITY	PART NUMBER

THIS DRAWING IS A CONTROLLED DOCUMENT.

DIMENSIONS: MM	TOLERANCES UNLESS OTHERWISE SPECIFIED: 0 PLC ± - 1 PLC ± - 2 PLC ± - 3 PLC ± - 4 PLC ± - ANGLES ± -	DWN	CHK	APVD	PRODUCT SPEC	APPLICATION SPEC	WEIGHT	CUSTOMER DRAWING
MATERIAL		FINISH		NAME		RESTRICTED TO		
				<b>STE</b> TE Connectivity USB CONNECTOR, RECEPTACLE 4 POSITION, SERIES A		SIZE: A3 CAGE CODE: 00779 DRAWING NO: C=1734081		
				SCALE: -		SHEET: 10 of 19 REV: E 1		

4

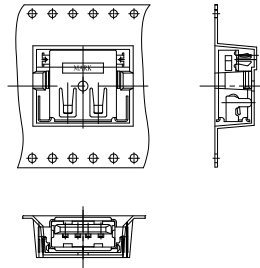
3

2

1

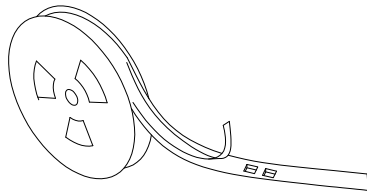
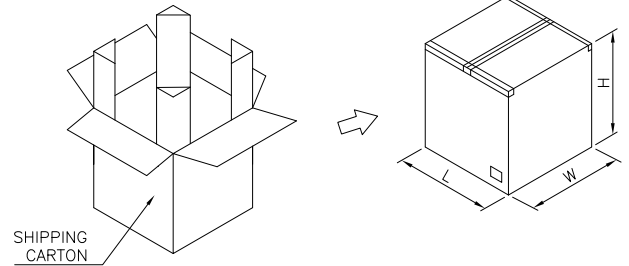
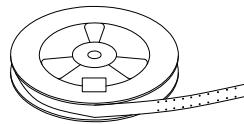
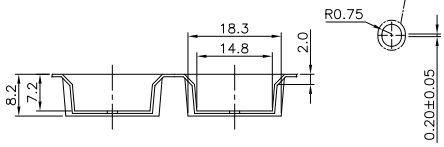
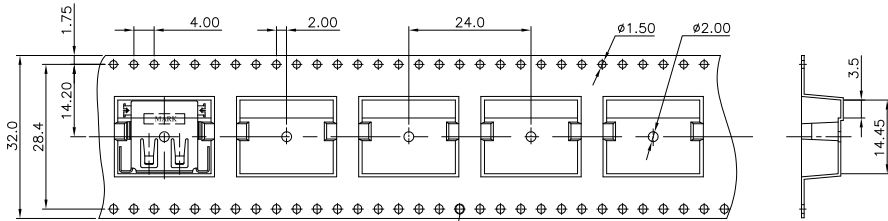
THIS DRAWING IS UNPUBLISHED. RELEASED FOR PUBLICATION  
 © COPYRIGHT - BY - ALL RIGHTS RESERVED.

LOC		DIST		REVISIONS				
P	LTR	DESCRIPTION	DATE	DWN	APVD			
-	-	SEE SHEET 1.	-	-	-			



NOTES:

- MATERIAL:  
 REEL: PS.  
 EMBOSSED CARRIER: PS.  
 COVER TAPE: PBT.
- DIMENSION :  
 TAPE REEL:  $\phi 330\text{mm} \times 37.1\text{mm}$   
 SHIPPING CARTON: L=350mm, W=350mm, H=350mm
- QUANTITY :  
 PRIMARY PACKING: 300PCS/REEL  
 SECONDARY PACKING: 8 REELS/CARTON(2,400PCS).
- WEIGHT :  
 NET WEIGHT: 0.44KG/REEL, 4.00 KG/CARTON.  
 GROSS WEIGHT: 1.81 KG/REEL, 9.05 KG/CARTON.
- PEELING RESISTANCE: 20G TO 130G.
- PEELING SPEED: 300MM/MIN.



9.05 Kg	4.00 Kg	300	8	2400	6-1734081-2
GROSS WEIGHT	NET WEIGHT	PCS/REEL	REELS /CARTON	QUANTITY	PART NUMBER

THIS DRAWING IS A CONTROLLED DOCUMENT.		DWN	TE Connectivity USB CONNECTOR, RECEPTACLE 4 POSITION, SERIES A			
DIMENSIONS:	TOLERANCES UNLESS OTHERWISE SPECIFIED:	CHK				
MM		APVD				
		PRODUCT SPEC				
		APPLICATION SPEC	SIZE	CAGE CODE	DRAWING NO	RESTRICTED TO
MATERIAL	FINISH	WEIGHT	A3	00779	C=1734081	-
CUSTOMER DRAWING			SCALE	SHEET	11 of 19	REV E 1

4

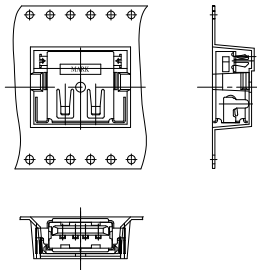
3

2

1

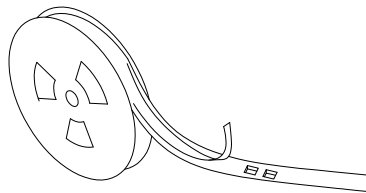
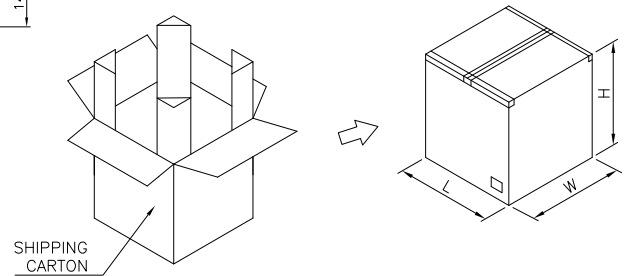
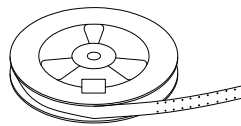
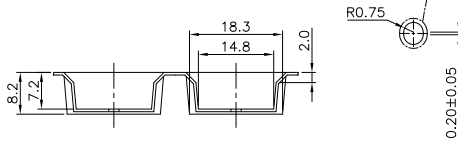
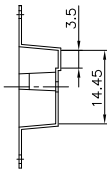
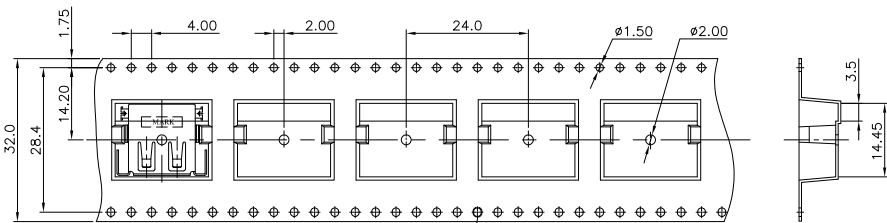
THIS DRAWING IS UNPUBLISHED. RELEASED FOR PUBLICATION  
 © COPYRIGHT - BY - ALL RIGHTS RESERVED.

LOC	DIST	REVISIONS				
P	LTR	DESCRIPTION	DATE	DWN	APVD	
		SEE SHEET 1.				



NOTES:

1. MATERIAL:  
REEL: PS.  
EMBOSSED CARRIER: PS.  
COVER TAPE: PBT.
2. DIMENSION :  
TAPE REEL:  $\phi 330\text{mm} \times 37.1\text{mm}$   
SHIPPING CARTON: L=350mm, W=350mm, H=350mm
3. QUANTITY :  
PRIMARY PACKING: 300PCS/REEL  
SECONDARY PACKING: 8 REELS/CARTON(2,400PCS).
4. WEIGHT :  
NET WEIGHT: 0.44KG/REEL, 4.00 KG/CARTON.  
GROSS WEIGHT: 1.81 KG/REEL, 9.05 KG/CARTON.
5. PEELING RESISTANCE: 20G TO 130G.
6. PEELING SPEED: 300MM/MIN.



9.05 Kg	4.00 Kg	300	8	2400	6-1734081-3
GROSS WEIGHT	NET WEIGHT	PCS/REEL	REELS/CARTON	QUANTITY	PART NUMBER

THIS DRAWING IS A CONTROLLED DOCUMENT.		DWN	TE Connectivity USB CONNECTOR, RECEPTACLE 4 POSITION, SERIES A			
DIMENSIONS:	TOLERANCES UNLESS OTHERWISE SPECIFIED:	CHK				
MM		APVD				
		PRODUCT SPEC				
		APPLICATION SPEC	SIZE	CAGE CODE	DRAWING NO	RESTRICTED TO
MATERIAL	FINISH	WEIGHT	A3	00779	C=1734081	
CUSTOMER DRAWING			SCALE	SHEET	12 of 19	REV E 1

4

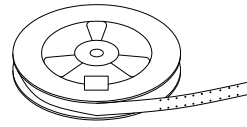
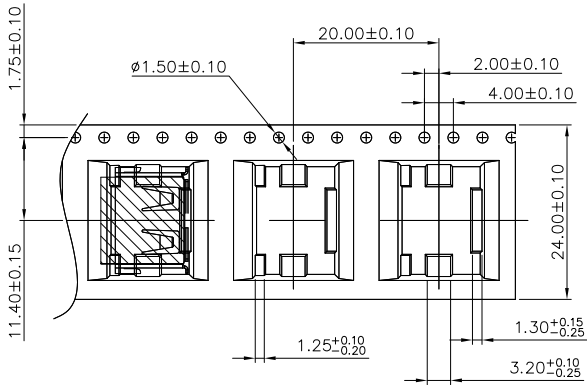
3

2

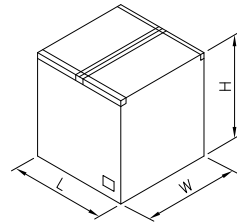
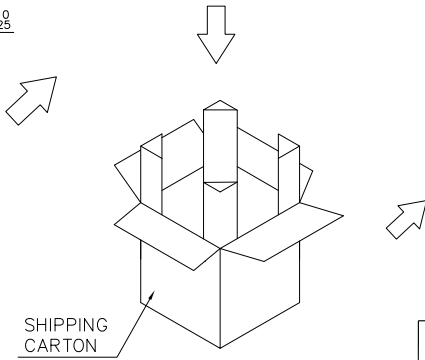
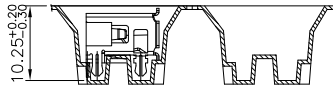
1

THIS DRAWING IS UNPUBLISHED. RELEASED FOR PUBLICATION  
 © COPYRIGHT - BY - ALL RIGHTS RESERVED.

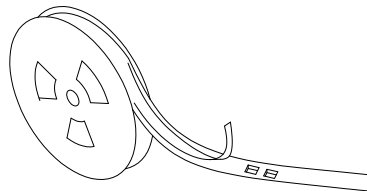
LOC	DIST	REVISIONS				
P	LTR	DESCRIPTION	DATE	DWN	APVD	
-	-	SEE SHEET 1.	-	-	-	



- NOTES:
- MATERIAL:  
 REEL: PS.  
 EMBOSSED CARRIER: PS.  
 COVER TAPE: PBT.
  - DIMENSION :  
 TAPE REEL:  $\phi 330\text{mm} \times 29.5\text{mm}$   
 SHIPPING CARTON: L=350mm, W=350mm, H=400mm
  - QUANTITY :  
 PRIMARY PACKING: 300PCS/REEL  
 SECONDARY PACKING: 12 REELS/CARTON(3600PCS).
  - WEIGHT :  
 NET WEIGHT: 0.46 KG/REEL, 5.55 KG/CARTON.  
 GROSS WEIGHT: 0.89 KG/REEL, 10.65 KG/CARTON.
  - PEELING RESISTANCE: 20G TO 130G.
  - PEELING SPEED: 300MM/MIN.



300	12	3600	10.65	5.55	5-1734081-3
					5-1734081-2
					5-1734081-1
PCS/ REEL	REELS/ BOX	QUANTITY (PCS)	G/W (Kg)	N/W (Kg)	PART NUMBER



THIS DRAWING IS A CONTROLLED DOCUMENT.		DWN	<b>STE</b> TE Connectivity		
DIMENSIONS: MM		CHK			
TOLERANCES UNLESS OTHERWISE SPECIFIED:		APVD	USB CONNECTOR, RECEPTACLE 4 POSITION, SERIES A		
0 PLC ± -		PRODUCT SPEC	SIZE CAGE CODE DRAWING NO RESTRICTED TO		
1 PLC ± -		APPLICATION SPEC	A3 00779 C-1734081		
2 PLC ± -		WEIGHT	CUSTOMER DRAWING		
3 PLC ± -			SCALE	SHEET	REV
4 PLC ± -				13 of 19	E 1
ANGLES ± -					
FINISH					

4

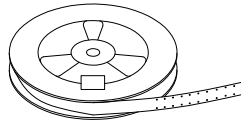
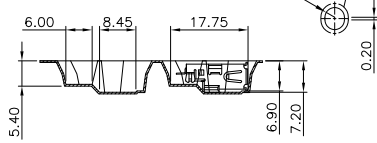
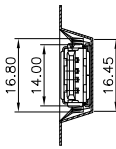
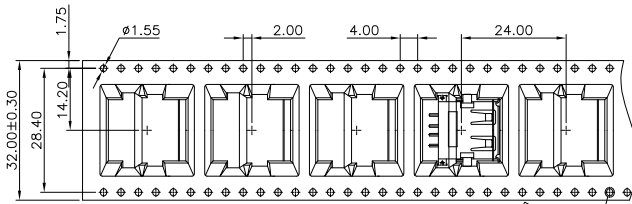
3

2

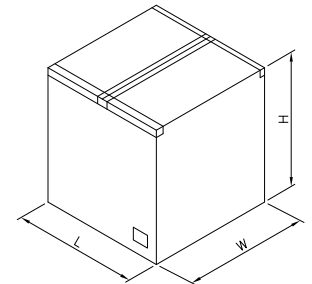
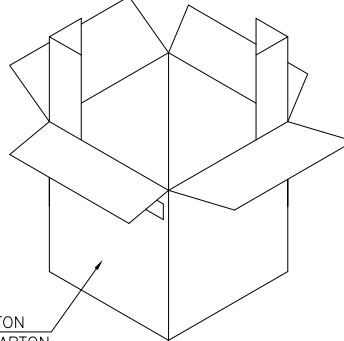
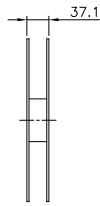
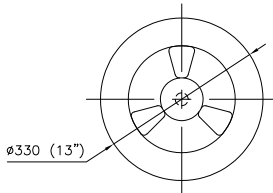
1

THIS DRAWING IS UNPUBLISHED. RELEASED FOR PUBLICATION  
 © COPYRIGHT - BY - ALL RIGHTS RESERVED.

LOC		DIST		REVISIONS				
P	LTR	DESCRIPTION			DATE	DWN	APVD	
-	-	SEE SHEET 1.			-	-	-	

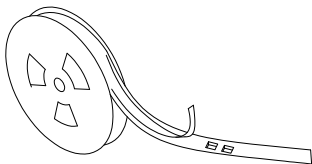


- NOTES:
- MATERIAL:  
 REEL: PS.  
 EMBOSSED CARRIER: PS.  
 COVER TAPE: PBT.
  - DIMENSION :  
 TAPE REEL:  $\phi 330\text{mm} \times 37.1\text{mm}$   
 SHIPPING CARTON: L=350mm, W=350mm, H=350mm
  - QUANTITY :  
 PRIMARY PACKING: 350PCS/REEL  
 SECONDARY PACKING: 9 REELS/CARTON.(3150 PCS)
  - WEIGHT :  
 NET WEIGHT: 4.85 kg .  
 GROSS WEIGHT: 9.85 kg .
  - PEELING RESISTANCE: 20G TO 130G.
  - PEELING SPEED: 300MM/MIN.



SHIPPING CARTON  
 9 TAPE-REEL/ CARTON

9.85 Kg	4.85 Kg	350	9	3150	3-1734081-1
GROSS WEIGHT	NET WEIGHT	PCS/REEL	REELS/CARTON	QUANTITY	PART NUMBER



THIS DRAWING IS A CONTROLLED DOCUMENT.		DWN	TE Connectivity				
DIMENSIONS:	TOLERANCES UNLESS OTHERWISE SPECIFIED:	CHK					
MM	0 PLC ± -	APVD					
	1 PLC ± -	PRODUCT SPEC					
MATERIAL	FINISH	WEIGHT	APPLICATION SPEC	SIZE	CAGE CODE	DRAWING NO	RESTRICTED TO
			CUSTOMER DRAWING	A3	00779	C=1734081	-
			SCALE	SHEET	14 of 19	REV	E 1

4

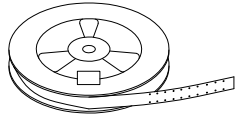
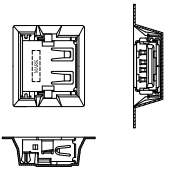
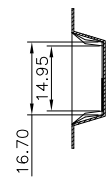
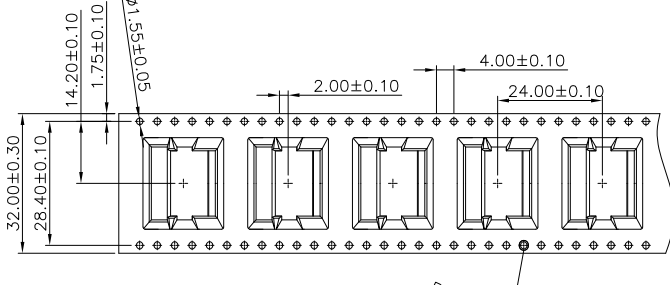
3

2

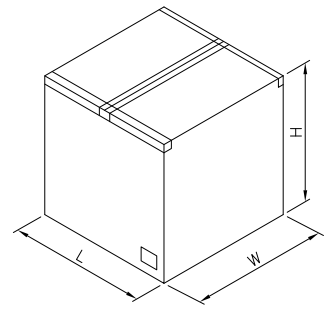
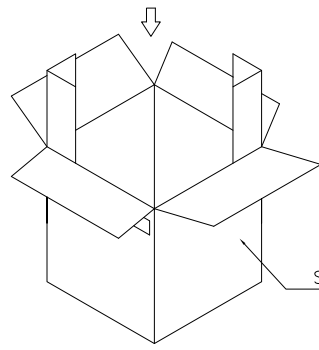
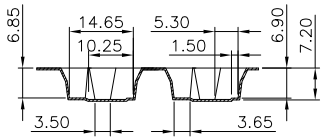
1

THIS DRAWING IS UNPUBLISHED. RELEASED FOR PUBLICATION  
 © COPYRIGHT BY - - ALL RIGHTS RESERVED.

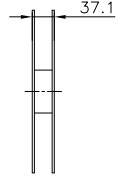
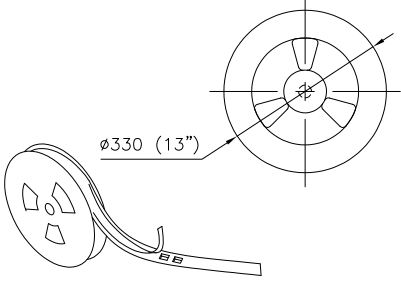
LOC		DIST		REVISIONS			
P	LTR	DESCRIPTION		DATE	DWN	APVD	
-	-	SEE SHEET 1.		-	-	-	-



- NOTES:
- MATERIAL:  
 REEL: PS.  
 EMBOSSED CARRIER: PS.  
 COVER TAPE: PBT.
  - DIMENSION :  
 TAPE REEL:  $\phi 330\text{mm} \times 37.1\text{mm}$   
 SHIPPING CARTON: L=350mm, W=350mm, H=350mm
  - QUANTITY :  
 PRIMARY PACKING: 350PCS/REEL  
 SECONDARY PACKING: 9 REELS/CARTON(3,150PCS).
  - WEIGHT :  
 NET WEIGHT: 0.55 KG/REEL, 4.85 KG/CARTON.  
 GROSS WEIGHT: 1.09 KG/REEL, 9.85 KG/CARTON.
  - PEELING RESISTANCE: 20G TO 130G.
  - PEELING SPEED: 300MM/MIN.



SHIPPING CARTON



9.85 Kg	4.85 Kg	350	9	3150	7-1734081-1
GROSS WEIGHT	NET WEIGHT	PCS/REEL	REELS/CARTON	QUANTITY	PART NUMBER
					2-1734081-3

THIS DRAWING IS A CONTROLLED DOCUMENT.

DIMENSIONS: MM	TOLERANCES UNLESS OTHERWISE SPECIFIED:	DWN	CHK	APVD	NAME
0 PLC	± -				<b>STE</b> TE Connectivity USB CONNECTOR, RECEPTACLE 4 POSITION, SERIES A
1 PLC	± -				
2 PLC	± -				
3 PLC	± -				
4 PLC	± -				
ANGLES	± -				
MATERIAL	FINISH	PRODUCT SPEC	APPLICATION SPEC	WEIGHT	SIZE
					CAGE CODE
					DRAWING NO
					RESTRICTED TO
					A3 00779 C=1734081
					CUSTOMER DRAWING
					SCALE
					SHEET
					15 of 19
					REV E 1

4

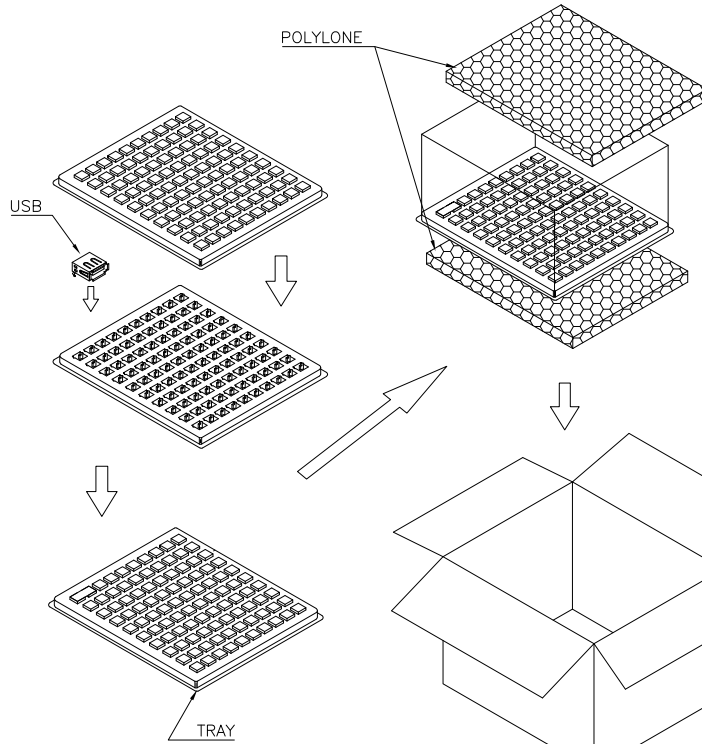
3

2

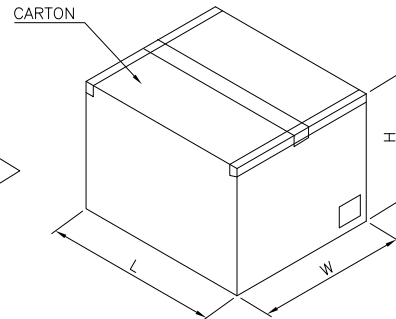
1

THIS DRAWING IS UNPUBLISHED. RELEASED FOR PUBLICATION  
 © COPYRIGHT - BY - ALL RIGHTS RESERVED.

LOC	DIST	REVISIONS				
P	LTR	DESCRIPTION	DATE	DWN	APVD	
-	-	SEE SHEET 1.	-	-	-	



- NOTES:
- DIMENSION :  
 TRAY : L=295mm, W=252mm, H=14mm  
 SHIPPING CARTON: L=315mm, W=270mm, H=200mm  
 POLYSTYRENE : L=290mm, W=250mm, H=10mm
  - QUANTITY :  
 PRIMARY PACKING: 100 PCS/TRAY  
 SECONDARY PACKING: 10 TRAYS/CARTON  
 (1,000PCS)
  - WEIGHT :  
 NET WEIGHT: 2.03KG/CARTON.  
 GROSS WEIGHT: 3.10KG/CARTON.



3.10 Kg	2.03 Kg	100	10	1000	4-1734081-2
					4-1734081-1
					1-1734081-1
					1734081-2
					1734081-1
GROSS WEIGHT	NET WEIGHT	PCS/TRAY	TRAY /CARTON	QUANTITY	PART NUMBER

THIS DRAWING IS A CONTROLLED DOCUMENT.		DWN			
DIMENSIONS: MM		CHK			
TOLERANCES UNLESS OTHERWISE SPECIFIED:		APVD			
0 PLC ± -		PRODUCT SPEC			
1 PLC ± -		APPLICATION SPEC			
2 PLC ± -		WEIGHT			
3 PLC ± -		CUSTOMER DRAWING			
4 PLC ± -		SCALE			
ANGLES ± -		SHEET			
FINISH		REV			
		16 of 19			

**STE** TE Connectivity

NAME: USB CONNECTOR, RECEPTACLE 4 POSITION, SERIES A

SIZE: A3 CAGE CODE: 00779 DRAWING NO: 1734081 RESTRICTED TO: -



4

3

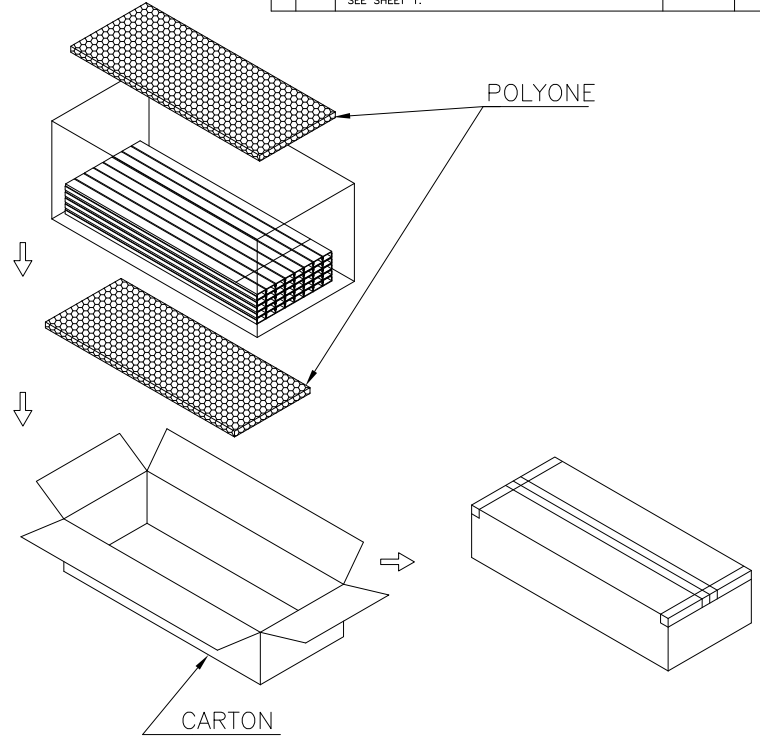
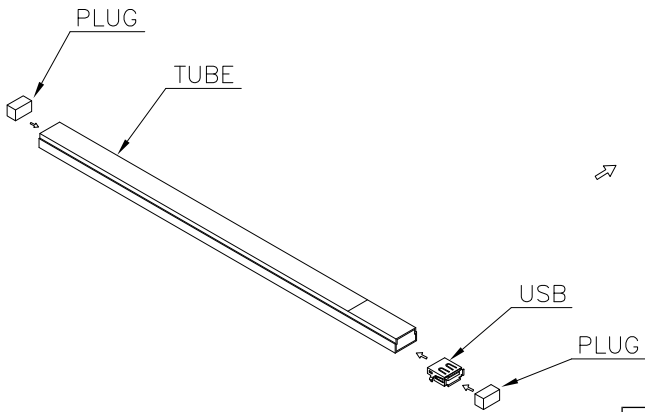
2

1

THIS DRAWING IS UNPUBLISHED. RELEASED FOR PUBLICATION  
 © COPYRIGHT - BY - ALL RIGHTS RESERVED.

LOC	DIST	REVISIONS				
P	LTR	DESCRIPTION	DATE	DWN	APVD	
		SEE SHEET 1.				

- NOTES:
- MATERIAL:  
 TRAY: PE.  
 POLYLONE:POLYLONE  
 SHIPPING CARTON: CORRUGATED FIBER.
  - DIMENSION :  
 TUBE : L=370mm, W=18.7mm, H=10.1mm  
 SHIPPING CARTON : L=390mm, W=165mm, H=90mm
  - QUANTITY :  
 25 PCS/TUBE  
 40 TUBES/INNER BOX(1,000PCS)
  - WEIGHT :  
 NET WEIGHT : 1.54 KG  
 GROSS WEIGHT : 2.45 KG



2.45 Kg	1.54 Kg	25	40	1000	2-1734081-2
GROSS WEIGHT	NET WEIGHT	PCS/TUBE	TUBES /CARTON	QUANTITY	PART NUMBER

THIS DRAWING IS A CONTROLLED DOCUMENT.

DIMENSIONS: MM	TOLERANCES UNLESS OTHERWISE SPECIFIED: 0 PLC ± - 1 PLC ± - 2 PLC ± - 3 PLC ± - 4 PLC ± - ANGLES ± -	DWN	CHK	APVD	PRODUCT SPEC	APPLICATION SPEC	WEIGHT	CUSTOMER DRAWING
MATERIAL	FINISH							

STE TE Connectivity

NAME: USB CONNECTOR, RECEPTACLE 4 POSITION, SERIES A

SIZE: A3 CAGE CODE: 00779 DRAWING NO: C=1734081 RESTRICTED TO: -

SCALE: - SHEET: 17 of 19 REV: E 1

4

3

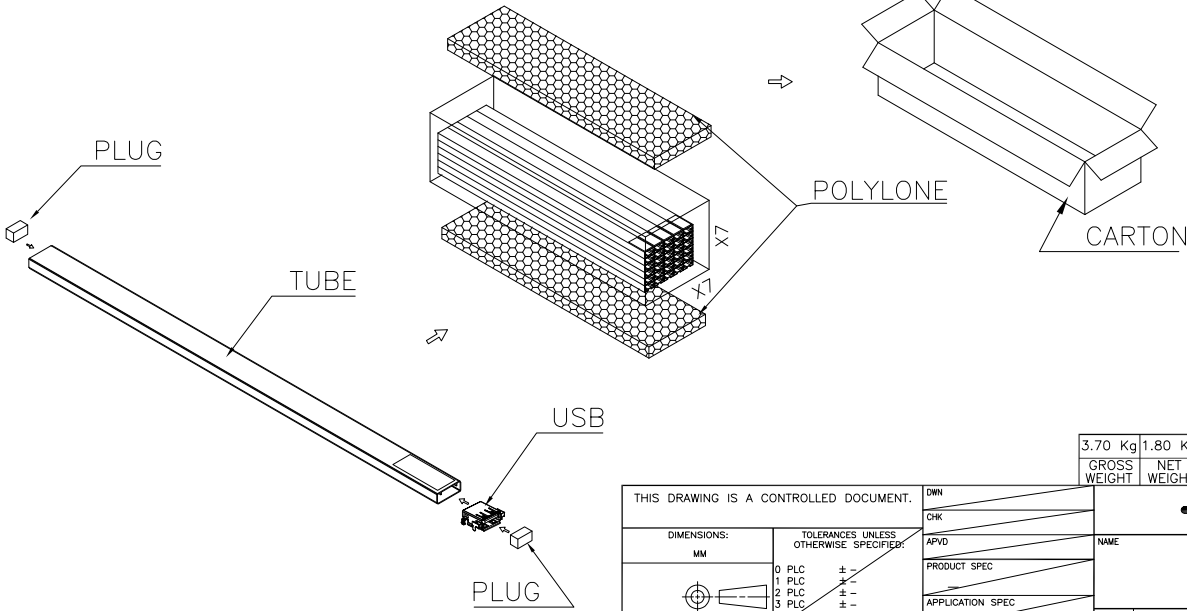
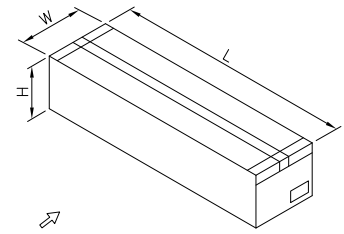
2

1

THIS DRAWING IS UNPUBLISHED. RELEASED FOR PUBLICATION  
 © COPYRIGHT - BY - ALL RIGHTS RESERVED.

LOC	DIST	REVISIONS				
P	LTR	DESCRIPTION	DATE	DWN	APVD	
-	-	SEE SHEET 1.	-	-	-	

- NOTE:
- MATERIAL:  
 TRAY: PE.  
 POLYLONE:POLYLONE  
 SHIPPING CARTON: CORRUGATED FIBER.
  - DIMENSION :  
 TUBE : L=370mm, W=21.8mm, H=8.6mm  
 SHIPPING CARTON : L=390mm, W=165mm, H=90mm
  - QUANTITY :  
 25 PCS/TUBE  
 49 TUBES/INNER BOX(1,225PCS)
  - WEIGHT :  
 NET WEIGHT : 1.80 KG  
 GROSS WEIGHT : 3.70 KG



3.70 Kg	1.80 Kg	25	49	1225	6-1734081-1
GROSS WEIGHT	NET WEIGHT	PCS/TUBE	TUBES /CARTON	QUANTITY	PART NUMBER

THIS DRAWING IS A CONTROLLED DOCUMENT.		DWN	TE Connectivity		
DIMENSIONS: MM		CHK			
TOLERANCES UNLESS OTHERWISE SPECIFIED:		APVD	NAME		
0 PLC ± -		PRODUCT SPEC	USB CONNECTOR, RECEPTACLE 4 POSITION, SERIES A		
1 PLC ± -		APPLICATION SPEC	SIZE CAGE CODE DRAWING NO RESTRICTED TO		
2 PLC ± -		WEIGHT	A3 00779 C=1734081		
3 PLC ± -		CUSTOMER DRAWING	SCALE	SHEET	REV
4 PLC ± -			-	18 of 19	E 1
ANGLES ± -					
FINISH					

