

4

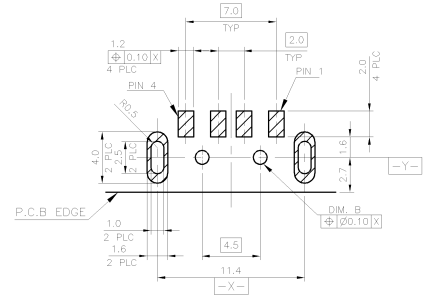
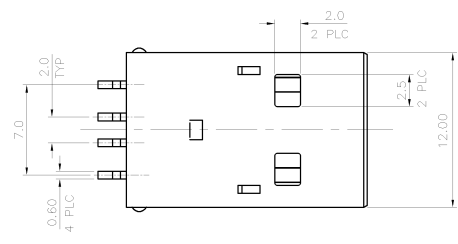
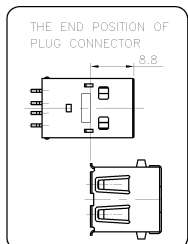
3

2

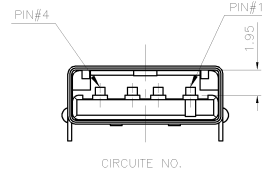
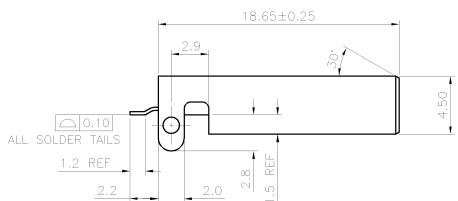
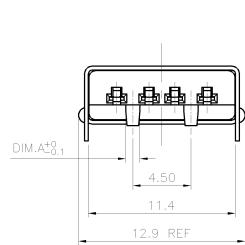
1

THIS DRAWING IS UNPUBLISHED. RELEASED FOR PUBLICATION
 © COPYRIGHT - BY TYCO ELECTRONICS CORPORATION. ALL RIGHTS RESERVED.

LOC	DIST	REVISIONS				
P	LTR	DESCRIPTION	DATE	DWN	APVD	
C		REVISED (ECO-11-013077)	23JUN11	JC	WK	



RECOMMENDED PCB LAYOUT (THICKNESS: 1.6mm)
 (COMPONENT VIEW) TOLERANCE: 1PLC:±0.1 2PLC:±0.05



NOTE:
 1. MATERIAL:
 HOUSING: PA-6T WITH 30% GF, UL 94V-0 COLOR: SEE TABLE.
 CONTACT: BRASS.
 SHIELD: COLD ROLL STEEL, (SPCC-1).

2. FINISH:
 CONTACTS: GOLD FLASH OVER
 0.76um[30u"] MIN. PALLADIUM-NICKEL PLATING ON CONTACT AREA,
 2.54um[100u"] MIN. MATTE-TIN ON SOLDER TAILS,
 1.27um[50u"] MIN. NICKEL UNDERPLATED ALL OVER.
 SHELL: 3.048um[120u"] MIN. NICKEL PLATED OVER
 5.08um[200u"] MIN. Cu UNDERPLATED ALL OVER.

3. REFLOW SOLDER CAPABLE TO 260°C PER TE TEST SPEC.
 109-201, CONDITION B.

⚠️ OBSOLETE PARTS: OBSOLETE CIS STREAMLINING PER D.RENAUD/D.SINISI

REEL	ø1.40	ø1.50	BLACK	1-1734028-4
	ø1.00	ø1.10	BLACK	1-1734028-3
TRAY	ø1.40	ø1.50	NATURE	1-1734028-2
	ø1.00	ø1.10	NATURE	1-1734028-1
PACKING	ø1.40	ø1.50	BLACK	1734028-4
	ø1.00	ø1.10	BLACK	1734028-3
DIM. A	ø1.40	ø1.50	NATURE	1734028-2
	ø1.00	ø1.10	NATURE	1734028-1

THIS DRAWING IS A CONTROLLED DOCUMENT.

DWN	F. YANG	240EC2008	TE Connectivity USB CONNECTOR, PLUG, R/A, SMT TYPE
CHK	S. CHIEN	240EC2008	
APVD	W. KODAMA	240EC2008	
NAME			
DIMENSIONS: MM			PRODUCT SPEC
TOLERANCES UNLESS OTHERWISE SPECIFIED:			108-57306
0 PLC ± 0.40			QUALIFICATION TEST REPORT
1 PLC ± 0.30			501-57337
2 PLC ± 0.20			WEIGHT --
3 PLC ± 0.10			SIZE CAGE CODE DRAWING NO
4 PLC ± --			A300779 C-1734028
ANGLES ± 3.0°			RESTRICTED TO
FINISH			SCALE -- SHEET 1 of 3 REV C
MATERIAL SEE NOTE			CUSTOMER DRAWING

4

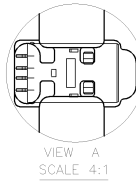
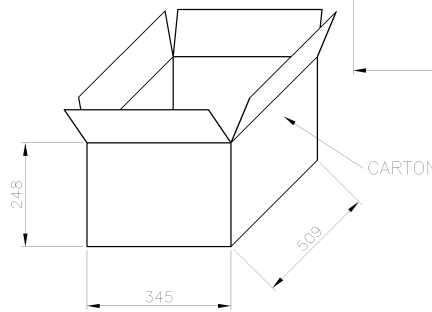
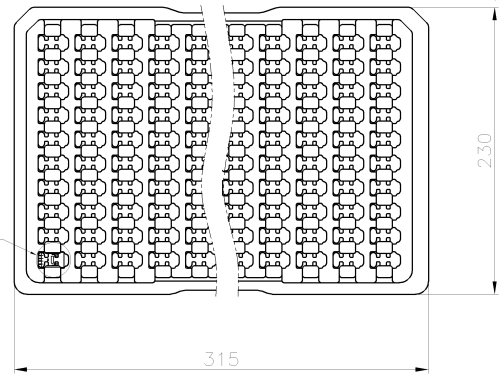
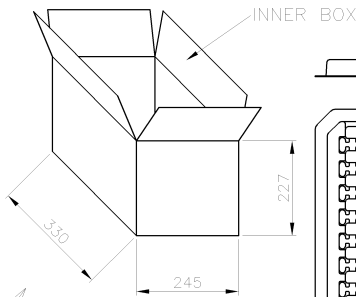
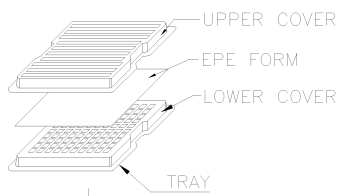
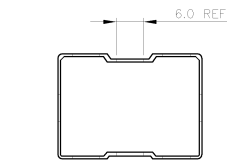
3

2

1

THIS DRAWING IS UNPUBLISHED. RELEASED FOR PUBLICATION
 © COPYRIGHT - BY TYCO ELECTRONICS CORPORATION. ALL RIGHTS RESERVED.

LOC	DIST	REVISIONS				
P	LTR	DESCRIPTION	DATE	DWN	APVD	
SEE SHEET 1.						



GROSS WEIGHT	NET WEIGHT	PCS/TRAY	TRAYS / CARTON	3200PCS QUANTITY
16.5kg	15.5kg	100	32	

THIS DRAWING IS A CONTROLLED DOCUMENT.		DWN	TE Connectivity	
DIMENSIONS: MM		CHK		
		APVD	USB CONNECTOR, PLUG, R/A, SMT TYPE	
TOLERANCES UNLESS OTHERWISE SPECIFIED:		PRODUCT SPEC	SIZE CAGE CODE DRAWING NO	
0 PLC ± -		APPLICATION SPEC	A3 00779 C-1734028	
1 PLC ± -		WEIGHT	RESTRICTED TO	
2 PLC ± -		CUSTOMER DRAWING	SCALE - SHEET 2 OF 3 REV C	
3 PLC ± -				
4 PLC ± -				
ANGLES ± -				
MATERIAL				
FINISH				

4

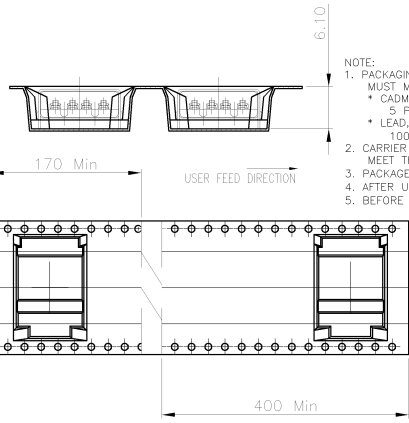
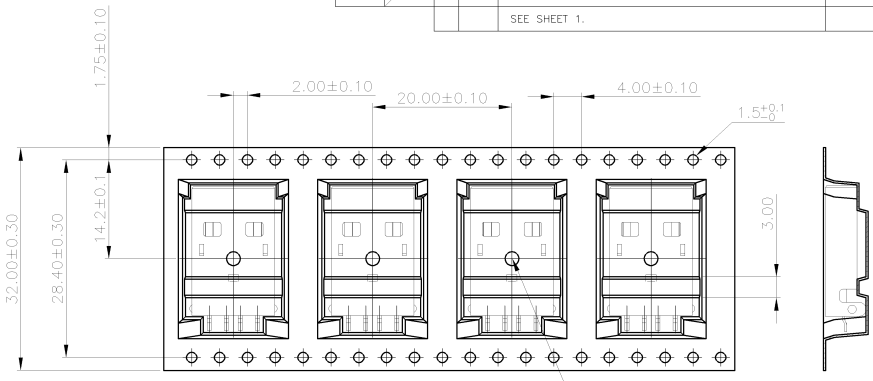
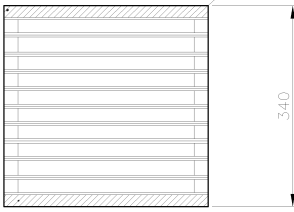
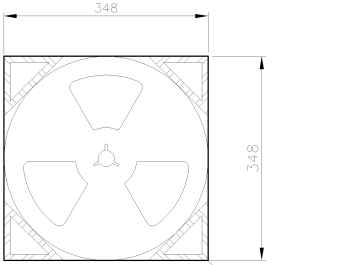
3

2

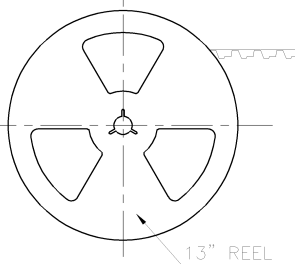
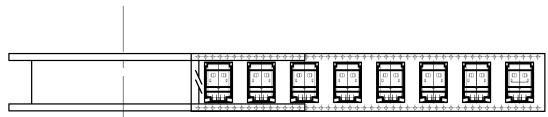
1

THIS DRAWING IS UNPUBLISHED. RELEASED FOR PUBLICATION
 © COPYRIGHT - BY TYCO ELECTRONICS CORPORATION. ALL RIGHTS RESERVED.

LOC	DIST	REVISIONS			
P	LTR	DESCRIPTION	DATE	DWN	APVD
SEE SHEET 1.					



- NOTE:
1. PACKAGING MATERIAL IN PLASTIC, RUBBER, INK, PIGMENT AND PAINT MUST MEET CONTROLLED SUBSTANCES PER TE SPEC TEC-138-702. * CADMIUM AND CADMIUM COMPOUNDS NOT TO EXCEED: 5 PPM. * LEAD, CADMIUM, CHROM VI AND MERCURY NOT TO EXCEED: 100 PPM (COMBINED).
 2. CARRIER TAPES, COVER TAPES, REELS AND TAPED COMPONENTS MUST MEET THE REQUIREMENTS DEFINED PER EIA-481-B.
 3. PACKAGE: 500 PCS/REEL, 8 REEL/BOX (W.G: 13.5kg, N.G: 12.5kg)
 4. AFTER UNREELING DIRECTION MUST HAVE 14PCS BLANK (400mm Min.)
 5. BEFORE UNREELING DIRECTION MUST HAVE 6PCS BLANK (170mm Min.)



13.5kg	12.5kg	500	8	4000PCS
GROSS WEIGHT	NET WEIGHT	PCS/TAPE	REEL /CARTON	QUANTITY

THIS DRAWING IS A CONTROLLED DOCUMENT.

DIMENSIONS: MM	TOLERANCES UNLESS OTHERWISE SPECIFIED:	DWN	CHK	TE Connectivity USB CONNECTOR, PLUG, R/A, SMT TYPE
	0 PLC ± -	APVD	NAME	
	1 PLC ± -	PRODUCT SPEC	SIZE	
	2 PLC ± -	APPLICATION SPEC	CAGE CODE	
MATERIAL	FINISH	WEIGHT	DRAWING NO	RESTRICTED TO

A3 00779 ©-1734028

CUSTOMER DRAWING SCALE: SHEET 3 of 3 REV C