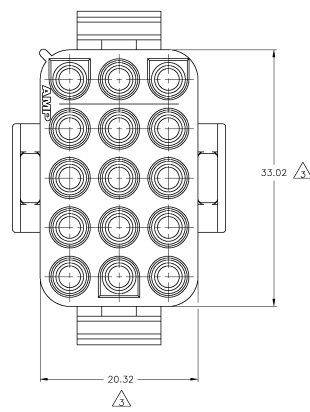
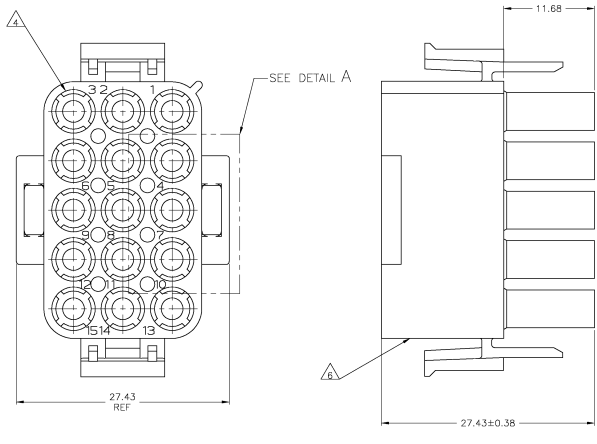
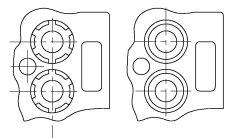
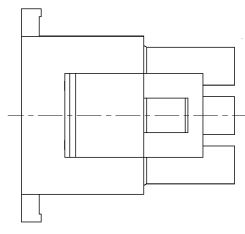


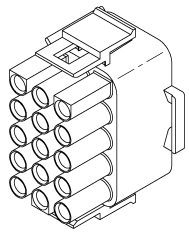
REV	DATE	DESCRIPTION	BY	CHK	APP
A1		RELEASED			



- MATES WITH APPROPRIATE UNIVERSAL MATE-N-LOK™ CAP OR HEADER.
  - SMALL NICKS ARE PERMITTED ON THE CIRCUIT TOWERS WHICH COULD INCREASE THE INITIAL HOUSING MATING FORCE BY UP TO 4.4 NEWTONS [1.0 LBS]. NO INDIVIDUAL NICKED TOWER SHALL INCREASE THIS FORCE BY OVER 2.2 NEWTONS [.5 LBS].
- △3 DIMENSION INDICATED IS AS MOLDED. ADDITIONAL GROWTH DUE TO SUBSEQUENT MOISTURE ABSORPTION MAY OCCUR.
  - △4 FOUR RIBS EQUALLY SPACED, NO SPECIFIC ORIENTATION; NO RIBS OR SIX RIBS EQUALLY SPACED, NO SPECIFIC ORIENTATION, OPTIONAL.
  - △5 NOT MANUFACTURED IN U.S.
  - △6 UNDERWRITERS RECOGNIZED COMPONENT LOGO AND CSA CERTIFICATION LOGO TO BE LOCATED ONCE ON EACH SIDE OF HOUSING.
  - △7 MATERIAL CORRESPONDING TO THE REQUIREMENTS OF IEC 60335 (INCL. GLOW WIRE TEST 750°C WITHOUT FLAME)



DETAIL A  
OPTIONAL CONSTRUCTION



3-DIMENSIONAL MODEL  
NOT TO SCALE

33.02	1.300
27.43	1.080
20.32	.800
11.68	.460
0.38	.015
0.13	.005
MM	IN

CONVERSION TABLE  
 NOT MADE BY THIS OFFICE



THIS DRAWING IS A CONTROLLED DOCUMENT.		BY: BALLO	DATE: 2/20/00	BY: LAZARO	DATE: 2/20/00	BY: BATLLO	DATE: 2/20/00	BY: LAZARO	DATE: 2/20/00
DIMENSIONS: mm		DRAWING NUMBER: 1863007-1		PROJECT: 15 CIRCUIT, UNIVERSAL MATE-N-LOK™		MATERIAL: PAB		REVISIONS: A1	
DRAWING NO: 1863007-1		DATE: 2/20/00		BY: LAZARO		DATE: 2/20/00		CHECKED BY: LAZARO	
MATERIAL: PAB		WEIGHT: ---		CUSTOMER DRAWING: ---		SCALE: 4:1		SHEET: 1 OF 1	

NATURAL 1863007-1  
 COLOR PART NUMBER

PLUG, 15 CIRCUIT, UNIVERSAL MATE-N-LOK™

1863007-1

DATE: 2/20/00 BY: LAZARO

SCALE: 4:1 SHEET: 1 OF 1