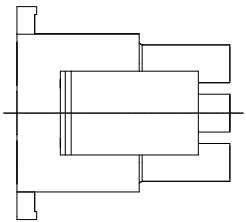
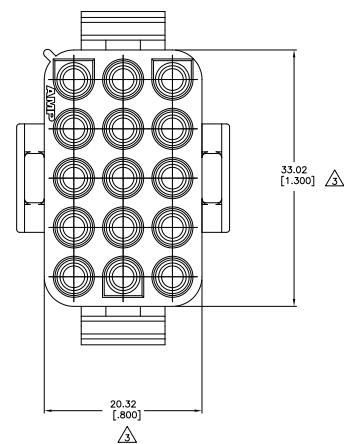
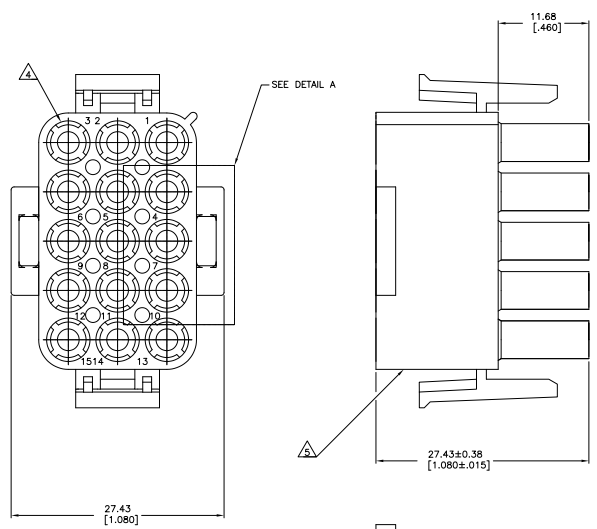
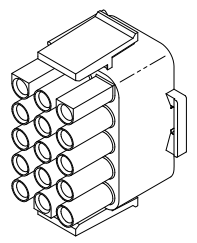


THIS DRAWING IS UNPUBLISHED  
 ALL RIGHTS RESERVED

| REV | DATE | DESCRIPTION               | BY     | CHKD   |
|-----|------|---------------------------|--------|--------|
| 00  |      |                           |        |        |
| AM2 |      | REVISED PER EDD-11-004587 | 11MM11 | RK HMR |



DETAIL A  
 OPTIONAL CONSTRUCTIONS



3-DIMENSIONAL MODEL  
 NTS

- MATES WITH APPROPRIATE UNIVERSAL MATE-N-LOK CAP OR HEADER.
  - SMALL NICKS ARE PERMITTED ON THE CIRCUIT TOWERS WHICH COULD INCREASE THE INITIAL HOUSING MATING FORCE BY UP TO 4.4 NEWTONS [1.0 LBS]. NO INDIVIDUAL NICKED TOWER SHALL INCREASE THIS FORCE BY OVER 2.2 NEWTONS [0.5 LBS].
- ⚠ DIMENSION INDICATED IS AS MOLDED. ADDITIONAL GROWTH DUE TO SUBSEQUENT MOISTURE ABSORPTION MAY OCCUR.
  - ⚠ FOUR RIBS EQUALLY SPACED, NO SPECIFIC ORIENTATION, NO RIBS OR SIX RIBS EQUALLY SPACED, NO SPECIFIC ORIENTATION, OPTIONAL.
  - ⚠ UNDERWRITERS RECOGNIZED COMPONENT LOGO AND CSA CERTIFICATION LOGO TO BE LOCATED ONCE EACH ON SIDE OF HOUSING.
  - ⚠ OBSOLETE PARTS: OBSOLETE CIS STREAMLINING PER D.RENAUD/C.SINISI

|            |         |             |
|------------|---------|-------------|
| ⚠ OBSOLETE | BLACK   | 1-480710-9  |
| ⚠ OBSOLETE | GRAY    | 1-480710-8  |
| ⚠ OBSOLETE | BLUE    | 1-480710-6  |
| ⚠ OBSOLETE | GREEN   | 1-480710-5  |
| ⚠ OBSOLETE | YELLOW  | 1-480710-4  |
| ⚠ OBSOLETE | ORANGE  | 1-480710-3  |
| ⚠ OBSOLETE | RED     | 1-480710-2  |
| ⚠ OBSOLETE | BROWN   | 1-480710-1  |
| ⚠ OBSOLETE | NATURAL | 1-480710-0  |
| ⚠ OBSOLETE | COLOR   | PART NUMBER |

THIS DRAWING IS A CONTROLLED DOCUMENT. **TE Connectivity**

TE Connectivity  
 PLUG, 15 CIRCUIT,  
 UNIVERSAL MATE-N-LOK

SIZE: 4.1

DATE: 11/07/79

DRAWING NO: 480710

REVISED TO: 1

BY: AM2

CUSTOMER DRAWING



