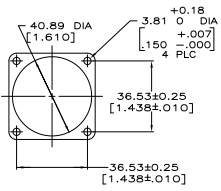
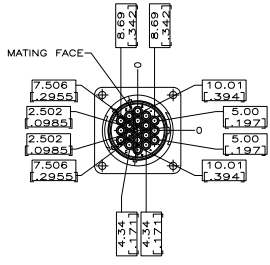
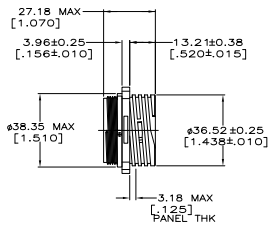
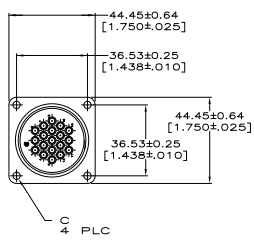


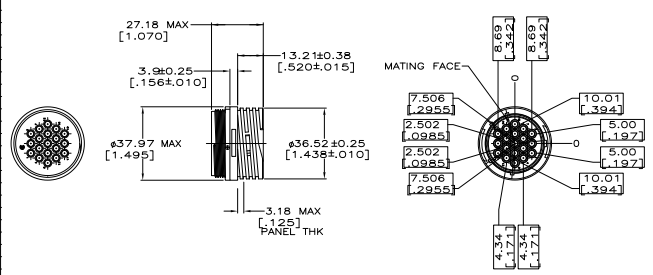
NOTES:

- WILL ACCEPT (19) MULTIMATE SOCKET CONTACTS.
- CONTACT CAVITIES IDENTIFIED BY CHARACTERS ON FRONT AND REAR FACES OF CONNECTOR.
- 3.81[.150] MAX INSULATION DIAMETER.
- 2.54[.100] MAX INSULATION DIAMETER.
- PRELIMINARY PART NUMBER.

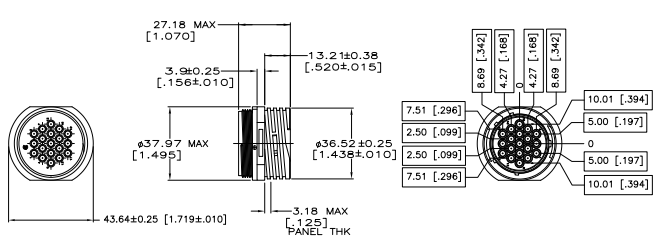


211773-1, 211773-2 & 211773-6

PANEL CUTOUT



211773-4



211773-5

4-40 THREADED INSERTS	YES	NORMAL	211773-6
	NO	FREE HANGING	211773-5
	NO	FREE HANGING	211773-4
ø3.81 [.150]	NO	NORMAL	211773-2
ø3.81 [.150]	NO	NORMAL	211773-1
C		PERIPHERAL SEAL	KEYING
			PART NUMBER

THIS DRAWING IS A CONTROLLED DOCUMENT.		REVISED	DATE	BY	CHK	APP
REVISIONS	DESCRIPTION	DATE	BY	CHK	APP	
01	REVISED PER EDD-11-004820		11MM11	RK	HMR	

TE Connectivity	RECEPTACLE HOUSING, REVERSE SEX, SERIES I, SHELL SIZE 23, CPC		
SIZE	SIZE	DRAWING NO	REVISED TO
A1	00779	Q=211773	
CUSTOMER DRAWING	DATE	1:1	1 of 1