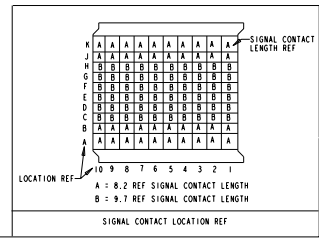
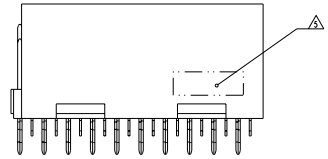
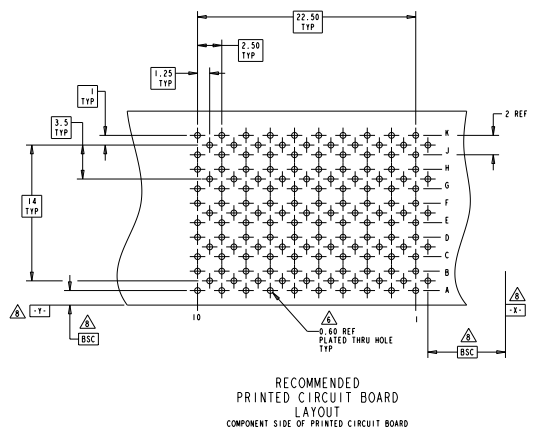
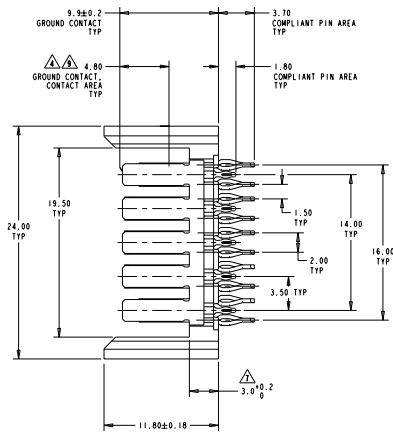
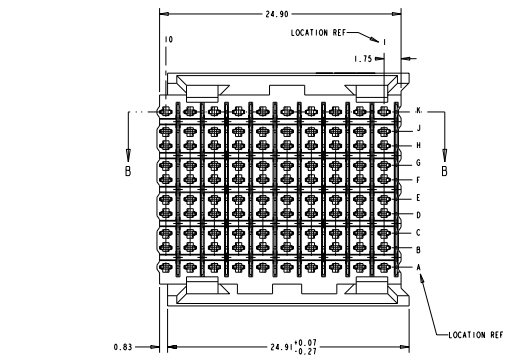
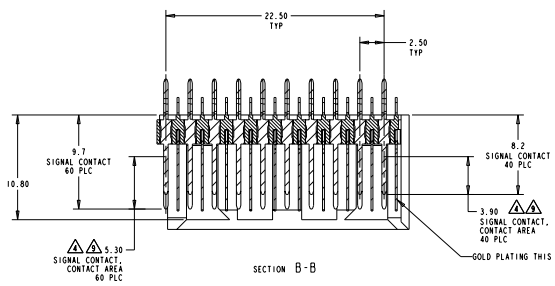


REV	DESCRIPTION	DATE	BY	CHK
00	A REVISED PER ECO-11-013132	13.06.2011	MMR	MM

- ⚠ PHOSPHOR BRONZE
- ⚠ LCP, UL94V-0
- ⚠ CONTACT MATING AREA MEETS THE PERFORMANCE REQUIREMENTS OF THE CONNECTIVITY PRODUCT SPECIFICATION 100-1557, BASED ON TELCORDIA GR-1217-CORE, APPLICATIONS IN UNCONTROLLED ENVIRONMENTS.
- ⚠ CONNECTOR MARKED WITH PART NUMBER AND DATE CODE
- ⚠ REFERENCE APPLICATION SPEC 114-13020 FOR RECOMMENDED PLATED THRU HOLE DIAMETER AND PLATING THICKNESS.
- ⚠ APPLICATION SEATING HEIGHT TO PRINTED CIRCUIT BOARD
- ⚠ DATINGS AND BASIC DIMENSIONS ESTABLISHED BY CUSTOMER
- ⚠ CONTACT AREA LUBRICATED WITH BELLCORE APPROVED LUBRICANT TECHNICAL REPORT: GR-1217-CORE, ISSUE 1, NOVEMBER 1995



ROWS C, D, E, F, G, H	ROWS A, B, J, K	5120753-1
SIGNAL CONTACT TYPE B QTY: 60	SIGNAL CONTACT TYPE A QTY: 40	PART NUMBER

THIS DRAWING IS A CONTROLLED DOCUMENT.

TE CONNECTIVITY
TE CONNECTIVITY
 HEADLINE ASSEMBLY, 100 POSITION, 10 ROW, SEQUENCED, BACKPLANE CONNECTOR, 2-PACK HS3

STATE: CA CASE NUMBER: 40
 PART: A 00778 ©-5120753
 CUSTOMER DRAWING