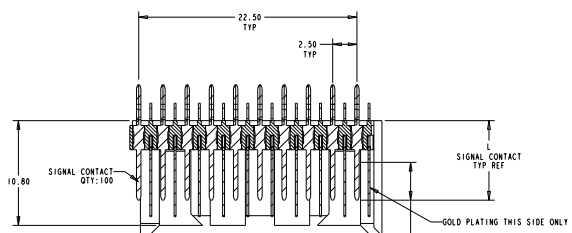
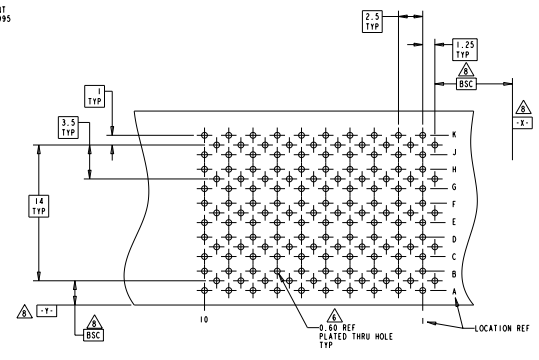
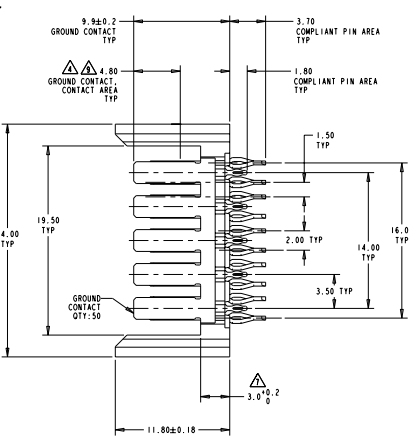
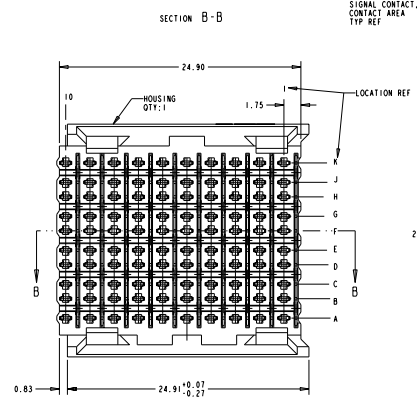


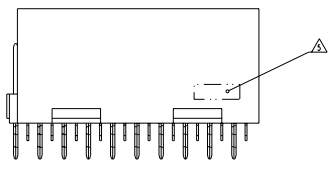
REV	DATE	DESCRIPTION	BY	CHK	APP
A	13.06.2011	REVISED PER ECO-11-013132	MMR	MM	



- ▲ PHOSPHOR BRONZE
- ▲ LCP, UL94V-0
- ▲ CONTACT MATING AREA MEETS THE PERFORMANCE REQUIREMENTS OF TE CONNECTIVITY PRODUCT SPECIFICATION 100-1937, BASED ON TELESCOPIC GR-1217-CORE, APPLICATIONS IN UNCONTROLLED ENVIRONMENTS.
- ▲ CONNECTOR MARKED WITH PART NUMBER AND DATE CODE
- ▲ REFERENCE APPLICATION SPEC 114-13020 FOR RECOMMENDED PLATED THRU HOLE DIAMETER AND PLATING THICKNESS.
- ▲ APPLICATION SEATING HEIGHT TO PRINTED CIRCUIT BOARD
- ▲ DATINGS AND BASIC DIMENSIONS ESTABLISHED BY CUSTOMER
- ▲ CONTACT AREA LUBRICATED WITH BELLCORE APPROVED LUBRICANT TECHNICAL REFERENCE: GR-1217-CORE, ISSUE 1, NOVEMBER 1995



RECOMMENDED PRINTED CIRCUIT BOARD LAYOUT
 COMPONENT SIDE OF PRINTED CIRCUIT BOARD



5.30	9.7	5120658-2
3.90	8.2	5120658-1
M	L	PART NUMBER

THIS DRAWING IS A CONTROLLED DOCUMENT.

DESIGNED BY: M. PATTERSON	DESIGNED BY: M. PATTERSON	DESIGNED BY: M. PATTERSON
CHECKED BY: M. PATTERSON	CHECKED BY: M. PATTERSON	CHECKED BY: M. PATTERSON
DATE: 11/01/11	DATE: 11/01/11	DATE: 11/01/11
SCALE: 1:1	SCALE: 1:1	SCALE: 1:1
STATE: CA	CAGE CODE: 5120658	REVISION: 1
ISSUE: 1	DATE: 11/01/11	BY: M. PATTERSON

TE Connectivity
 HEADER ASSEMBLY, 100 POSN,
 2-PACK MS3
 BACKPLANE CONNECTOR

STATE: CA CAGE CODE: 5120658
 ISSUE: 1 DATE: 11/01/11 BY: M. PATTERSON

REVISION: 1
 DATE: 11/01/11
 BY: M. PATTERSON