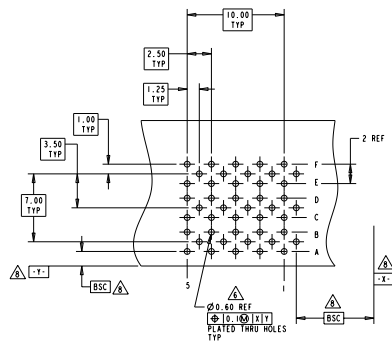
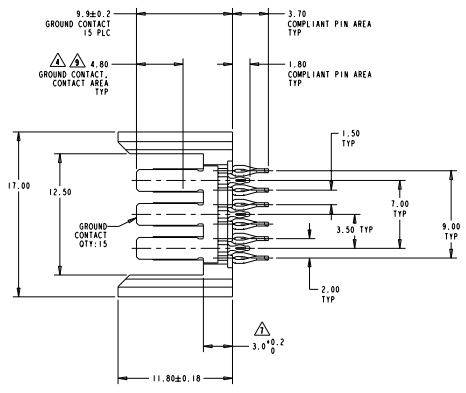
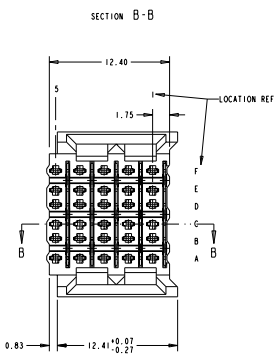
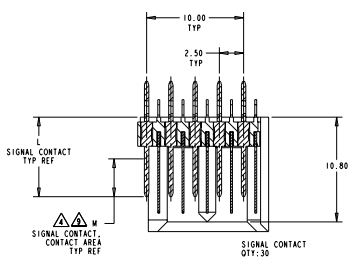


DATE DRAWING TO BE PUBLISHED	REVISIONS FOR PUBLICATION
02/03/2022	ALL RIGHTS RESERVED

REVISED		REVISIONS			
NO.	DATE	DESCRIPTION	DATE	BY	CHK
H		REVISED PER ECO-11-013132	13.06.2011	MMR	MM

- ⚠ PHOSPHOR BRONZE
- ⚠ LCP, UL94V-0
- ⚠ CONTACT MATING AREA MEETS THE PERFORMANCE REQUIREMENTS OF TE CONNECTIVITY PRODUCT SPECIFICATION 100-1557, BASED ON TELCORDIA GR-1217-CORE, APPLICATIONS IN UNCONTROLLED ENVIRONMENTS.
- ⚠ CONNECTOR MARKED WITH PART NUMBER AND DATE CODE
- ⚠ REFERENCE APPLICATION SPEC 114-13020 FOR RECOMMENDED PLATED THRU HOLE DIAMETER AND PLATING THICKNESSES
- ⚠ APPLICATION SEATING HEIGHT TO PRINTED CIRCUIT BOARD
- ⚠ DATINGS AND BASIC DIMENSIONS ESTABLISHED BY CUSTOMER
- ⚠ CONTACT AREA LUBRICATED WITH BELLCORE APPROVED LUBRICANT TECHNICAL REFERENCE: GR-1217-CORE, ISSUE 1, NOVEMBER 1995



RECOMMENDED PRINTED CIRCUIT BOARD LAYOUT  
COMPONENT SIDE OF PRINTED CIRCUIT BOARD

5.30	9.7	120732-2
3.90	8.2	120732-1
M	L	PART NUMBER

THIS DRAWING IS A CONTROLLED DOCUMENT.

DATE: 5-25-99	REV: 1
DATE: 5-25-99	REV: 2
DATE: 5-25-99	REV: 3
DATE: 5-25-99	REV: 4
DATE: 5-25-99	REV: 5
DATE: 5-25-99	REV: 6
DATE: 5-25-99	REV: 7
DATE: 5-25-99	REV: 8
DATE: 5-25-99	REV: 9
DATE: 5-25-99	REV: 10

TE Connectivity  
**TE**  
 HEADER ASSEMBLY, 30 POSITION, 6 ROW, BACKPLANE CONNECTOR, Z-PACK HCS  
 STATE: CA DATE: 00778 ©=120732  
 CUSTOMER DRAWING