

4

3

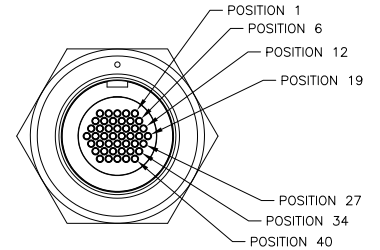
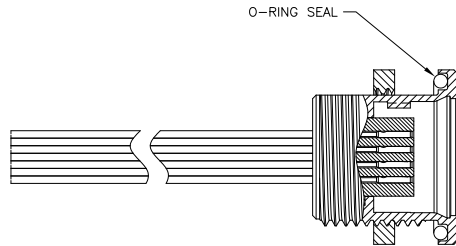
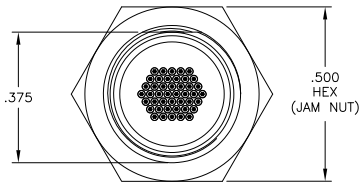
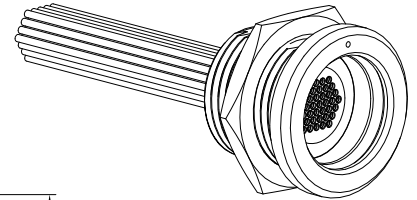
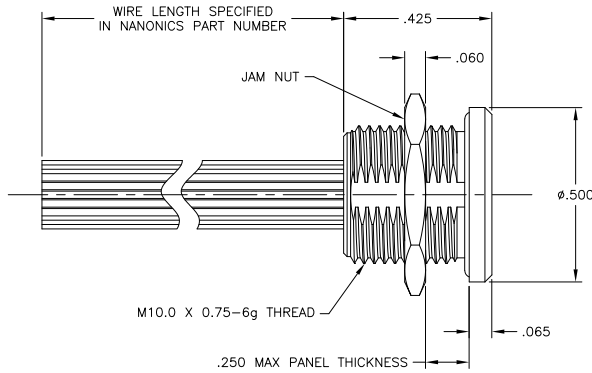
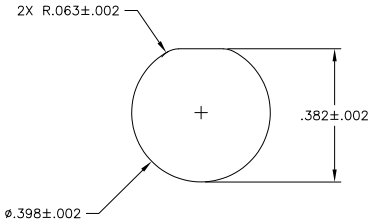
2

1

THIS DRAWING IS UNPUBLISHED. RELEASED FOR PUBLICATION
 © COPYRIGHT - By - ALL RIGHTS RESERVED.

LOC	DIST	REVISIONS			
P	LTR	DESCRIPTION	DATE	BY	APPD
G		UPDATE PER ECO-11-013272	28 JUN 11	CAS	MKS

SUGGESTED PANEL
CUT OUT



1 CONNECTOR BODY AND JAM NUT MATERIAL: 6061-T6 ALUMINUM, ELECTROLESS NICKEL PLATED PER SAE-AMS-C-26074 OR SAE-AMS-2404E
 INSULATOR MATERIAL: LIQUID CRYSTAL POLYMER (LCP) PER ASTM D5138 OR POLYPHENYLENE SULFIDE (PPS) PER ASTM D4067
 O-RING MATERIAL: FLUOROSILICONE

2 WIRE TERMINATION: 28 AWG SOLID, 30 AWG STRANDED WIRE OR SMALLER

3 LUBRICATE O-RING WITH PARKER SUPER-O-LUBE PRIOR TO INSTALLATION

4 THIS DRAWING ALSO IDENTIFIED AS NANONICS 303-0028

THIS DRAWING IS A CONTROLLED DOCUMENT.		DRN M. STORRY 4 MAY 99	TE Connectivity
DIMENSIONS: INCHES		CHK S. PAULUS 7 MAY 99	
DIMENSIONS: 0 PLC ± .005 1 PLC ± .010 2 PLC ± .005 3 PLC ± .005 4 PLC ± .010 ANGLES ± .1°		NAME S. KAIN 27 JAN 00 PRODUCT SPEC APPLICATION SPEC WEIGHT	RECEPTACLE ASSEMBLY, CIRCULAR, FLUSH MOUNT, QUICK DISCONNECT, METAL, 44 POSITION
MATERIAL SEE NOTES		SIZE CASE CODE DRAWING NO. RESTRICTED TO A2 0PJN9 C=1589690 CUSTOMER DRAWING SCALE 5:1 SHEET 1 of 1 REV G	