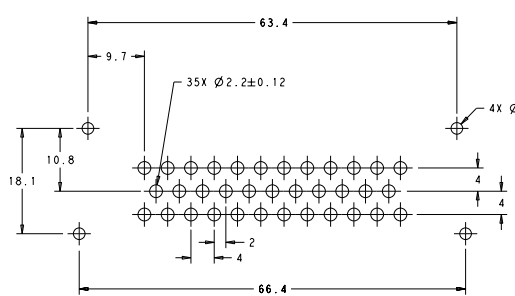
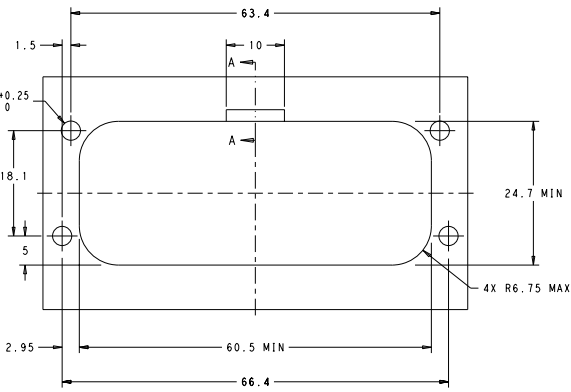


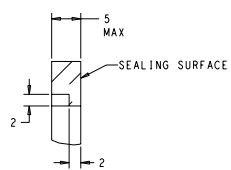
REV	DATE	DESCRIPTION	BY	CHK	APP
BV	00	SEE SHEET 1			



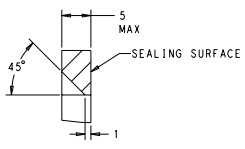
RECOMMENDED P.C. BOARD LAYOUT FOR 1.57 THICK P.C. BOARD



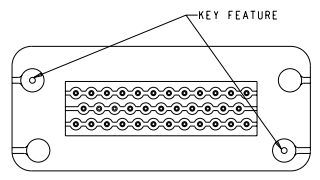
RECOMMENDED MOUNTING HOLE LAYOUT FOR 5.0 MAX THICK PANEL



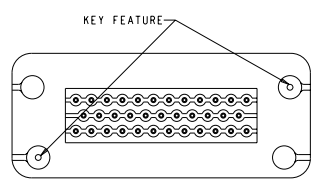
SECTION A-A
 OPTIONAL CONSTRUCTION IF PANEL THICKNESS IS GREATER THAN 2.0



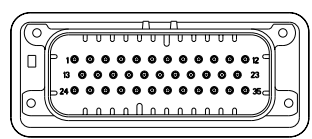
SECTION A-A
 OPTIONAL CONSTRUCTION IF PANEL THICKNESS IS GREATER THAN 2.0



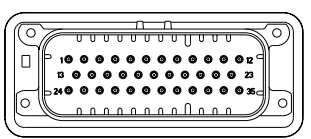
KEYING FOR 776231-1 AND 776231-4
 SCALE 2:1



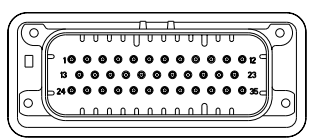
KEYING FOR 776231-2 AND 776231-5
 SCALE 2:1



776231-2 & 1-776231-2
 KEY LOCATION
 SCALE 2:1



776231-4 & 1-776231-4
 KEY LOCATION
 SCALE 2:1



776231-5 & 1-776231-5
 KEY LOCATION
 SCALE 2:1

THIS DRAWING IS A CONTROLLED DOCUMENT.		REV	DATE	DESCRIPTION	BY	CHK	APP
		01	03/2015	01	STRASSER	01	03/2015
		02	03/2015	02	STRASSER	02	03/2015
		03	03/2015	03	STRASSER	03	03/2015
		04	03/2015	04	STRASSER	04	03/2015
		05	03/2015	05	STRASSER	05	03/2015
		06	03/2015	06	STRASSER	06	03/2015
		07	03/2015	07	STRASSER	07	03/2015
		08	03/2015	08	STRASSER	08	03/2015
		09	03/2015	09	STRASSER	09	03/2015
		10	03/2015	10	STRASSER	10	03/2015
		11	03/2015	11	STRASSER	11	03/2015
		12	03/2015	12	STRASSER	12	03/2015
		13	03/2015	13	STRASSER	13	03/2015
		14	03/2015	14	STRASSER	14	03/2015
		15	03/2015	15	STRASSER	15	03/2015
		16	03/2015	16	STRASSER	16	03/2015
		17	03/2015	17	STRASSER	17	03/2015
		18	03/2015	18	STRASSER	18	03/2015
		19	03/2015	19	STRASSER	19	03/2015
		20	03/2015	20	STRASSER	20	03/2015
		21	03/2015	21	STRASSER	21	03/2015
		22	03/2015	22	STRASSER	22	03/2015
		23	03/2015	23	STRASSER	23	03/2015
		24	03/2015	24	STRASSER	24	03/2015
		25	03/2015	25	STRASSER	25	03/2015
		26	03/2015	26	STRASSER	26	03/2015
		27	03/2015	27	STRASSER	27	03/2015
		28	03/2015	28	STRASSER	28	03/2015
		29	03/2015	29	STRASSER	29	03/2015
		30	03/2015	30	STRASSER	30	03/2015
		31	03/2015	31	STRASSER	31	03/2015
		32	03/2015	32	STRASSER	32	03/2015
		33	03/2015	33	STRASSER	33	03/2015
		34	03/2015	34	STRASSER	34	03/2015
		35	03/2015	35	STRASSER	35	03/2015
		36	03/2015	36	STRASSER	36	03/2015
		37	03/2015	37	STRASSER	37	03/2015
		38	03/2015	38	STRASSER	38	03/2015
		39	03/2015	39	STRASSER	39	03/2015
		40	03/2015	40	STRASSER	40	03/2015
		41	03/2015	41	STRASSER	41	03/2015
		42	03/2015	42	STRASSER	42	03/2015
		43	03/2015	43	STRASSER	43	03/2015
		44	03/2015	44	STRASSER	44	03/2015
		45	03/2015	45	STRASSER	45	03/2015
		46	03/2015	46	STRASSER	46	03/2015
		47	03/2015	47	STRASSER	47	03/2015
		48	03/2015	48	STRASSER	48	03/2015
		49	03/2015	49	STRASSER	49	03/2015
		50	03/2015	50	STRASSER	50	03/2015
		51	03/2015	51	STRASSER	51	03/2015
		52	03/2015	52	STRASSER	52	03/2015
		53	03/2015	53	STRASSER	53	03/2015
		54	03/2015	54	STRASSER	54	03/2015
		55	03/2015	55	STRASSER	55	03/2015
		56	03/2015	56	STRASSER	56	03/2015
		57	03/2015	57	STRASSER	57	03/2015
		58	03/2015	58	STRASSER	58	03/2015
		59	03/2015	59	STRASSER	59	03/2015
		60	03/2015	60	STRASSER	60	03/2015
		61	03/2015	61	STRASSER	61	03/2015
		62	03/2015	62	STRASSER	62	03/2015
		63	03/2015	63	STRASSER	63	03/2015
		64	03/2015	64	STRASSER	64	03/2015
		65	03/2015	65	STRASSER	65	03/2015
		66	03/2015	66	STRASSER	66	03/2015
		67	03/2015	67	STRASSER	67	03/2015
		68	03/2015	68	STRASSER	68	03/2015
		69	03/2015	69	STRASSER	69	03/2015
		70	03/2015	70	STRASSER	70	03/2015
		71	03/2015	71	STRASSER	71	03/2015
		72	03/2015	72	STRASSER	72	03/2015
		73	03/2015	73	STRASSER	73	03/2015
		74	03/2015	74	STRASSER	74	03/2015
		75	03/2015	75	STRASSER	75	03/2015
		76	03/2015	76	STRASSER	76	03/2015
		77	03/2015	77	STRASSER	77	03/2015
		78	03/2015	78	STRASSER	78	03/2015
		79	03/2015	79	STRASSER	79	03/2015
		80	03/2015	80	STRASSER	80	03/2015
		81	03/2015	81	STRASSER	81	03/2015
		82	03/2015	82	STRASSER	82	03/2015
		83	03/2015	83	STRASSER	83	03/2015
		84	03/2015	84	STRASSER	84	03/2015
		85	03/2015	85	STRASSER	85	03/2015
		86	03/2015	86	STRASSER	86	03/2015
		87	03/2015	87	STRASSER	87	03/2015
		88	03/2015	88	STRASSER	88	03/2015
		89	03/2015	89	STRASSER	89	03/2015
		90	03/2015	90	STRASSER	90	03/2015
		91	03/2015	91	STRASSER	91	03/2015
		92	03/2015	92	STRASSER	92	03/2015
		93	03/2015	93	STRASSER	93	03/2015
		94	03/2015	94	STRASSER	94	03/2015
		95	03/2015	95	STRASSER	95	03/2015
		96	03/2015	96	STRASSER	96	03/2015
		97	03/2015	97	STRASSER	97	03/2015
		98	03/2015	98	STRASSER	98	03/2015
		99	03/2015	99	STRASSER	99	03/2015
		100	03/2015	100	STRASSER	100	03/2015