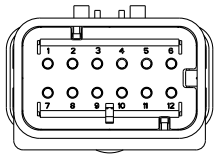
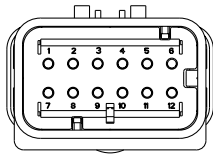


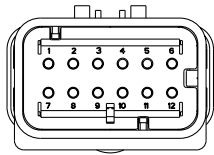
LOC		DIST		REVISIONS			
P	LYA	DESCRIPTION	DATE	BY	CHK	APPR	
D1		REVISED PER ECR-10-019377	30SEP2010	MMR	T.M		



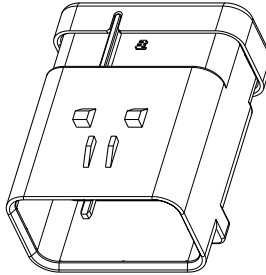
1717934-2  
SCALE 2:1



1717934-3  
SCALE 2:1

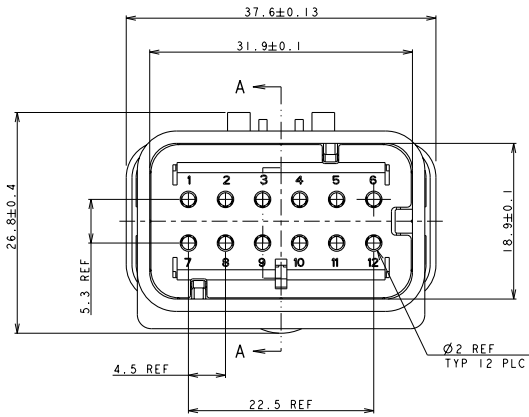


1717934-4  
SCALE 2:1

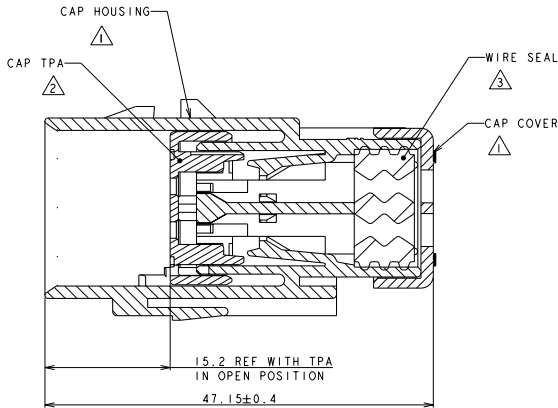


SCALE 2:1

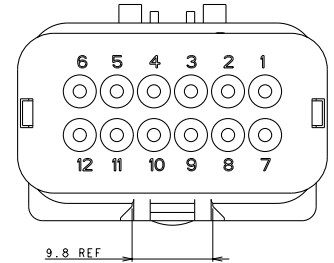
- ⚠ MATERIAL: 15% GLASS FILLED THERMOPLASTIC  
COLOR: BLACK
- ⚠ MATERIAL: 15% GLASS FILLED THERMOPLASTIC  
COLOR: (SEE TABLE)
- ⚠ MATERIAL: SILICONE  
COLOR: GREEN  
4. WIRE INSULATION RANGE:  $\phi 1.3 \sim \phi 2.3$



1717934-1 SHOWN



A - A



GREEN	1717934-4
YELLOW	1717934-3
GRAY	1717934-2
RED	1717934-1
TPA COLOR	PART NUMBER

DIMENSIONS: mm		DATE: 15JAN2004 BY: Y. AAIIO CHK: S. MANABE APPR: S. MANABE DATE: 15JAN2004	Tyco Electronics Corporation Kawasaki, Japan
MATERIAL: FINISH:		PRODUCT SPEC: APPLICATION SPEC: 114-13065 WEIGHT: CUSTOMER DRAWING	NAME: CAP ASSY, 12 POS. BRACKET REVERSE TYPE, SMALL WIRE SIZE AMPSEAL 16 SHEET CASE CODE: A200779 DRAWING NO: C-1717934 RESTRICTED TO:
		SCALE: 3:1	SHEET 1 OF 1 REV D1