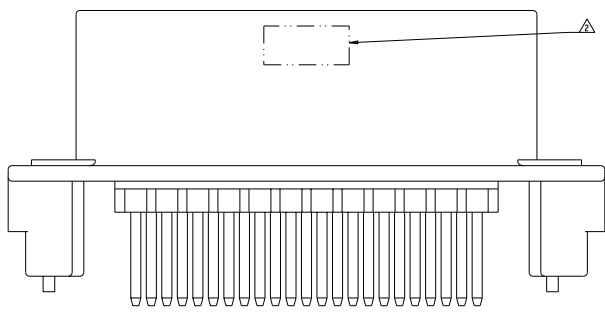
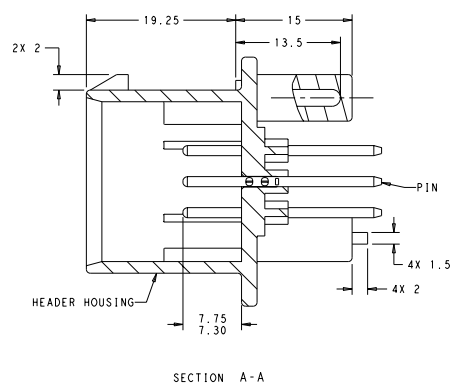
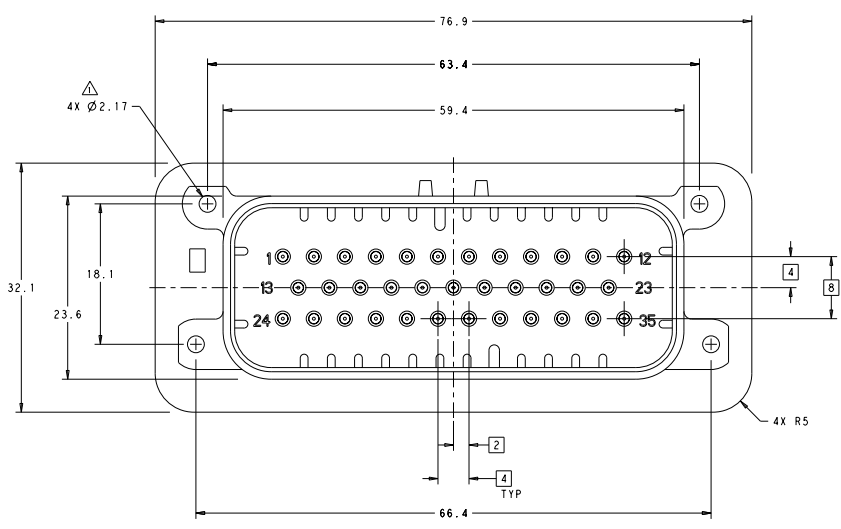


REV	DATE	DESCRIPTION	BY	CHK	APP
A3		REVISED PER ECO-10-006160	JUNIOR	DCS	

- △ ACCEPTS #4 SELF TAPPING THREAD CUTTING SCREWS OR METRIC EQUIVALENT. DRIVE TO 0,6 N-m MAX
- △ DATE CODE IN THIS LOCATION USING 5 DIGIT CODE
 FIRST 2 DIGITS = YEAR, SECOND 2 DIGITS = WEEK
 LAST DIGIT = DAY.
- △ MATERIALS: HEADER HOUSING - GLASS FILLED PBT
 PINS - TIN OR GOLD PLATED BRASS
- △ HOUSING COLORS ARE MECHANICALLY KEYS TO MATE ONLY WITH IDENTICALLY COLORED PLUG ASSEMBLIES.
- 5. HEADER MATES TO PLUG ASSEMBLY 776164 WHICH USES REELED TERMINAL 770520 OR LOOSE PIECE TERMINAL 770854

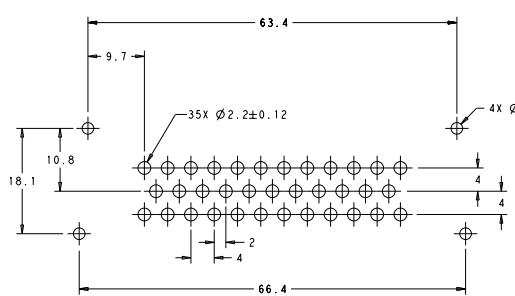


776230-1 & 1-776230-1 SHOWN

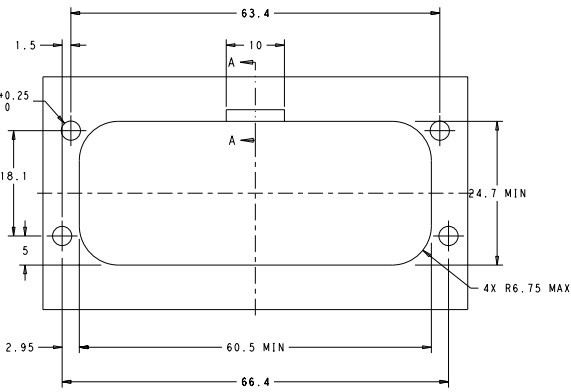
HEADER COLOR	PLATING	PART NUMBER
BLUE	DURAGOLD	1-776230-5
GRAY	DURAGOLD	1-776230-4
NATURAL	DURAGOLD	1-776230-2
BLACK	DURAGOLD	1-776230-1
BLUE	TIN	776230-5
GRAY	TIN	776230-4
NATURAL	TIN	776230-2
BLACK	TIN	776230-1

TITLE: ASSEMBLY, HEADER, 35 POSITION, VERTICAL, AMPSEAL PART NUMBER: 776230-1		DATE: 00779 SCALE: 1:1 DRAWING NO: 776230-1	REVISED PER ECO-10-006160 BY: JUNIOR CHECKED: DCS
CUSTOMER DRAWING		SHEET: 1 OF 2 DRAWING NO: 776230-1	DATE: 00779

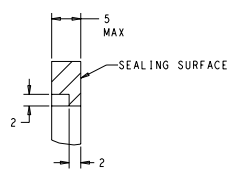
REV	DATE	DESCRIPTION	BY	CHK	APP
00		SEE SHEET 1			



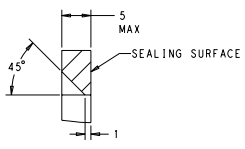
RECOMMENDED P.C. BOARD LAYOUT FOR 1.57 THICK P.C. BOARD



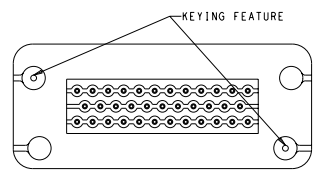
RECOMMENDED MOUNTING HOLE LAYOUT FOR 5.0 MAX THICK PANEL



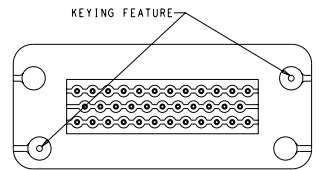
SECTION A-A
 OPTIONAL CONSTRUCTION IF PANEL THICKNESS IS GREATER THAN 2.0



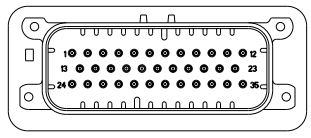
SECTION A-A
 OPTIONAL CONSTRUCTION IF PANEL THICKNESS IS GREATER THAN 2.0



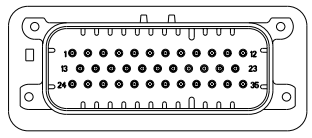
KEYING FOR 776230-1 AND 776230-4
 SCALE 2:1



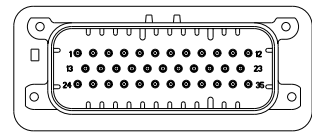
KEYING FOR 776230-2 AND 776230-5
 SCALE 2:1



776230-2 & 1-776230-2
 KEY LOCATION
 SCALE 2:1



776230-4 & 1-776230-4
 KEY LOCATION
 SCALE 2:1



776230-5 & 1-776230-5
 KEY LOCATION
 SCALE 2:1

DATE: 11/11/00 BY: J. STRAUSS CHECKED: J. STRAUSS TITLE: CUSTOMER DRAWING		PART NO.: 776230-1 REV: 00 DATE: 11/11/00 BY: J. STRAUSS CHECKED: J. STRAUSS TITLE: CUSTOMER DRAWING		TITLE: ASSEMBLY, VERTICAL, 35 POSITION, AMPSEAL PART NO.: 776230 REV: 00 DATE: 11/11/00 BY: J. STRAUSS CHECKED: J. STRAUSS TITLE: CUSTOMER DRAWING	
--	--	---	--	--	--