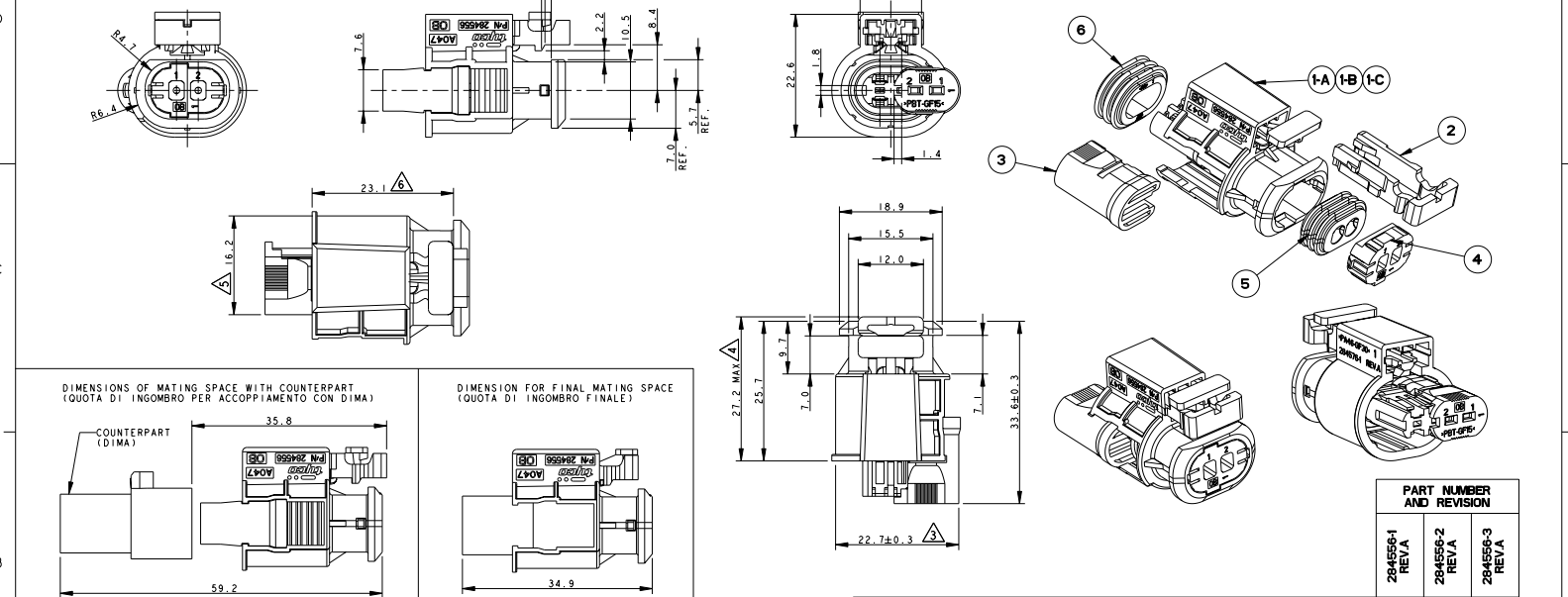


REV. LTR	DESCRIPTION	DATE	DNW	APVDS
A6	REVISED PER ECO-11-005033	20MAR2011	RR	HMR



ITEM	DESCRIPTION	MATERIAL	COLOUR	QTY
1-A	2 POS. HOUSING PORTACONTATTI 2 POSIZIONI	PA 4.6 GF	BLACK (NERO)	1
1-B	2 POS. HOUSING PORTACONTATTI 2 POSIZIONI	PA 4.6 GF	BROWN (MARRONE)	1
1-C	2 POS. HOUSING PORTACONTATTI 2 POSIZIONI	PA 4.6 GF	GREY (GRIGIO)	1
2	CPA-CONNECTOR POSITION ASSURANCE (DISPOSITIVO CORRETTO ACCOPPIAMENTO)	PBT GF	YELLOW (GIALLO)	1
3	SECONDARY LOCK (DISPOSITIVO AGGANCIO SECONDARIO)	PBT GF	RED (ROSSO)	1
4	POLARIZATOR (COPERCHIO POLARIZZATORE)	PBT GF	BLACK (NERO)	1
5	FAMILY SEAL (GUARNIZIONE MULTIPLA)	LSR	REDDISH BROWN (ROSSO MATTONE)	1
6	COUPLING SEAL (GUARNIZIONE FRONTALE)	LSR	REDDISH BROWN (ROSSO MATTONE)	1

1) ALL CAVITIES ARE SUITABLE FOR RECEPTACLE CONTACTS:  
 SENSOR FLAT CONTACT P/N 929025-1, WIRE RANGE FROM 1.5 TO 2.0 mm<sup>2</sup>  
 SENSOR FLAT CONTACT P/N 929027-1, WIRE RANGE FROM 0.75 TO 1.0 mm<sup>2</sup>  
 BOTH CONTACTS ARE GOLD PLATED IN CONTACT AREA  
 FOR MINIMUM ACCEPTABLE CABLE INSULATION DIAMETER SEE SEALING PERFORMANCES SECTION ON PRODUCT SPECIFICATION N. 108-20207  
 SEE APPLICATION SPEC. 114-18254 FOR CORRECT WIRE CRIMPING PARAMETERS  
 (LE CAVITA' SONO ADATTE PER CONTATTI):  
 SENSOR FLAT CONTACT P/N 929025-1, RANGO FILO DA 1.5 A 2.0 mm<sup>2</sup>  
 SENSOR FLAT CONTACT P/N 929027-1, RANGO FILO DA 0.75 A 1.0 mm<sup>2</sup>  
 ENTRAMBI I CONTATTI SONO DORATI NELLA ZONA DI CONTATTO  
 PER IL MINIMO DIAMETRO ACCETTABILE DELL'ISOLANTE VEDI PARAGRAFO 'SEALING PERFORMANCES'  
 SU SPECIFICA DI PRODOTTO N. 108-20207.  
 VEDI SPECIFICA DI APPLICAZIONE N. 114-18254 PER LA CORRETTA AGGRAFFATURA DEL CAVO).

2) FOR COUNTERPART INTERFACE DRAWING SEE SHEET 2 OF 2  
 (PER IL DISEGNO DELLA CONTROPARTE DI INTERFACCIA VEDI FOGLIO 2 DI 2)

3) SECONDARY LOCK SUPPLIED IN PRE-ASSEMBLED POSITION  
 (AGGANCIO SECONDARIO FORNITO IN POSIZIONE PRE-ASSEMBLATA)

4) CPA SUPPLIED IN PRE-ASSEMBLED POSITION  
 (CPA FORNITO IN POSIZIONE PRE-ASSEMBLATA)

5) SECONDARY LOCK IN PROPER POSITION FOR MATING WITH COUNTERPART  
 (AGGANCIO SECONDARIO IN POSIZIONE CORRETTA PER CONNESSIONE CON CONTROPARTE)

6) CPA IN CLOSED POSITION, WHEN THE CONNECTOR IS PROPERLY MATED WITH COUNTERPART  
 (CPA IN POSIZIONE CHIUSA QUANDO IL CONNETTORE E' CORRETTAMENTE ACCOPPIATO CON CONTROPARTE)

THIS DRAWING IS A CONTROLLED DOCUMENT. DNW P. CASSANDRINI 2/MAR99		TE Connectivity	
DIMENSIONS: mm		2 POSITIONS CONNECTOR FOR INJECTION COIL	
MATERIAL: INVAR		284556-1 REV.A	

4

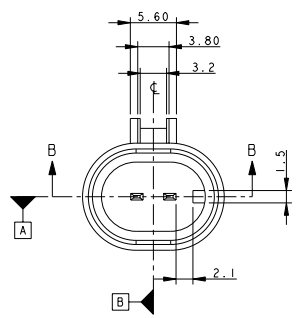
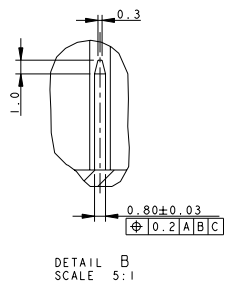
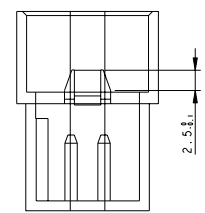
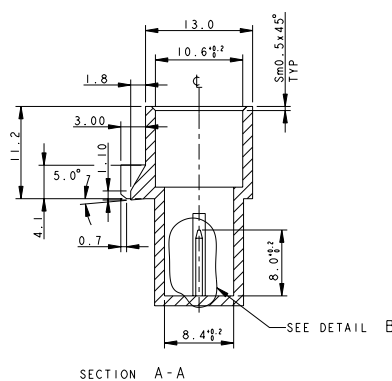
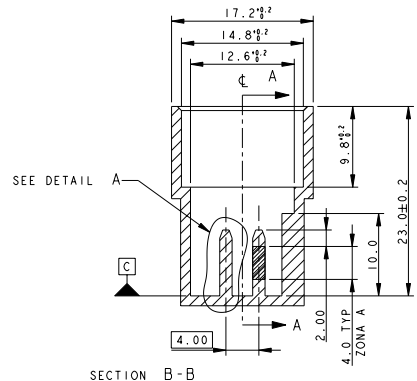
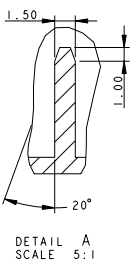
3

2

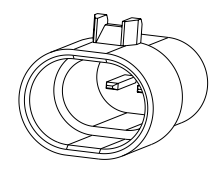
1

THIS DRAWING IS UNPUBLISHED. RELEASED FOR PUBLICATION 2009  
 BY - ALL RIGHTS RESERVED.

LOC	DISP	REV	DESCRIPTION	DATE	BY	APPR
1	-	1	SEE SHEET 1	-	-	-



I TAB DEVONO SOPPORTARE UN CARICO DI 15 N APPLICATO COME IN FIGURA, SENZA SUBIRE, AL TERMINE DELL'APPLICAZIONE DELLA FORZA, UNA DEFORMAZIONE PERMANENTE SUPERIORE A 0,1mm IN TUTTE LE DIREZIONI!  
 LA PROVA PREVEDE LA RIMOZIONE DELLA CORONA PLASTICA ESTERNA.  
 (THE TABS MUST WITHSTAND A 15N LOAD APPLIED AS SHOWN, WITHOUT SUFFERING A PERMANENT DEFORMATION GREATER THAN 0,1mm, IN ALL DIRECTION, AFTER FORCE APPLICATION.  
 THE PLASTIC EXTERNAL HOOD MUST BE REMOVED TO PERFORM THE TEST.)



**MATERIALS:**  
(MATERIALI:)

- BODY IN PLASTIC MATERIAL SUITABLE FOR 150°C TEMPERATURE (CORPO IN MATERIALE PLASTICO ADATTO PER TEMPERATURA DI 150°C CONTINUATIVI)
- TABS: BRASS WITH 0.4 micron MIN GOLD IN ZONE A OVER 1.3/3.5 micron MIN NICKEL (LINGUETTE IN OTTONE DORATO 0.4 micron MIN ORO in zona A su 1.3/3.5 micron NICKEL)

THIS DRAWING IS A CONTROLLED DOCUMENT.		DRW: P_CASSANDINI	2 MAR 99	
DIMENSIONS: mm		CHK: O_CANLIGO	2 MAR 99	
TOLERANCES UNLESS OTHERWISE SPECIFIED:		APPR: -		NAME: -
		PRODUCT SPEC: 108-20207		2 POSITIONS CONNECTOR FOR INJECTION COIL
MATERIAL: INVAR		APPLICATION SPEC: 411-20059		RESTRICTED TO: -
WEIGHT: -		CUSTOMER DRAWING		SIZE: A2 CAGE CODE: 200779 DRAWING NO: - DATE: 284556
SCALE: 2:1		SHEET 2 OF 2		REV: A6