

4

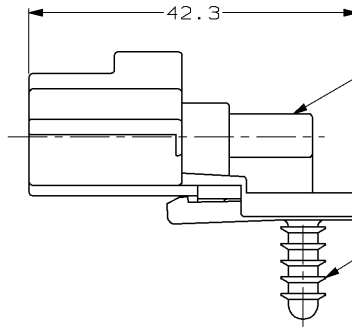
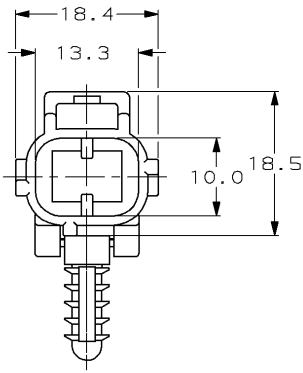
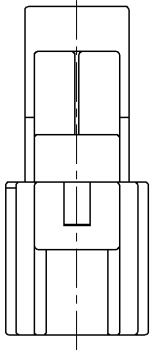
3

2

1

THIS DRAWING IS UNPUBLISHED. RELEASED FOR PUBLICATION  
 BY AMP INCORPORATED. ALL RIGHTS RESERVED.

LOC	QTY	REVISIONS			
P	LTR	DESCRIPTION	DATE	DWN	APVD
		O INITIAL RELEASE	02/14/96	KW	JK
		A REV PER ECN #OKS0-0014-96	09/23/96	KW	JK
		B REV PER ECN #OK20-0024-97	09/30/97	KL	JK
		C REV PER ECN #OK20-0035-97	04NOV97	KW	JK



$\triangle 1$  RETAINS IN A  $\varnothing 5$  HOLE.

2 POSN END CAP  
 MATL: PBT, 15% GLASS FILLED  
 FINISH: BLACK

RETAINER  $\triangle 1$   
 MATL: NYLON  
 FINISH: BLACK

184180-1  
 PART NUMBER

<small>THIS DRAWING IS A CONTROLLED DOCUMENT FOR AMP INCORPORATED.          IT IS SUBJECT TO CHANGE AND THE ORIGINAL ENGINEERING          ORGANIZATION SHOULD BE CONTACTED FOR THE LATEST REVISION.</small>		DWN K. WISE 02/14/96 CHK J. KUNKLE 07/08/96 APVD J. KUNKLE 07/08/96 PRODUCT SPEC APPLICATION SPEC WEIGHT CUSTOMER DRAWING	<b>AMP</b> AMP Incorporated Harrisburg, PA 17105-3608 <b>END CAP HSG ASSY, SSC, 2 POSN          E KEY</b> SIZE A3 CAGE CODE 00779 DRAWING NO. ©-184180 SCALE 2:1 SHEET 1 OF 1 REV C
DIMENSIONS: mm 	TOLERANCES UNLESS OTHERWISE SPECIFIED: 0 PLC ±- 1 PLC ±0.3 2 PLC ±- 3 PLC ±- 4 PLC ±- ANGLES ±- FINISH -	MATERIAL -	

AMP1470-19 REV 10/93

12-NOV-97 11:10:21 omp33084/home/ssr-v027a/dsk01/dept1135/omp33084/edmod