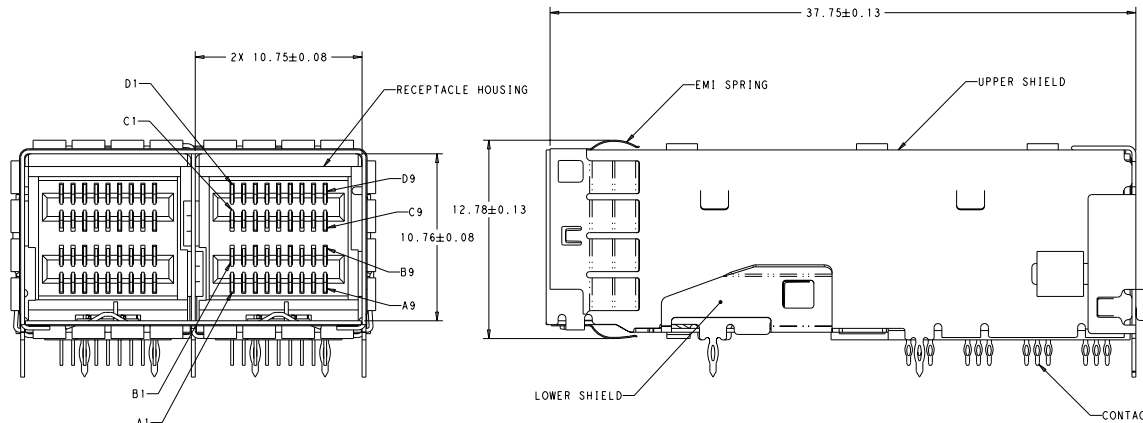
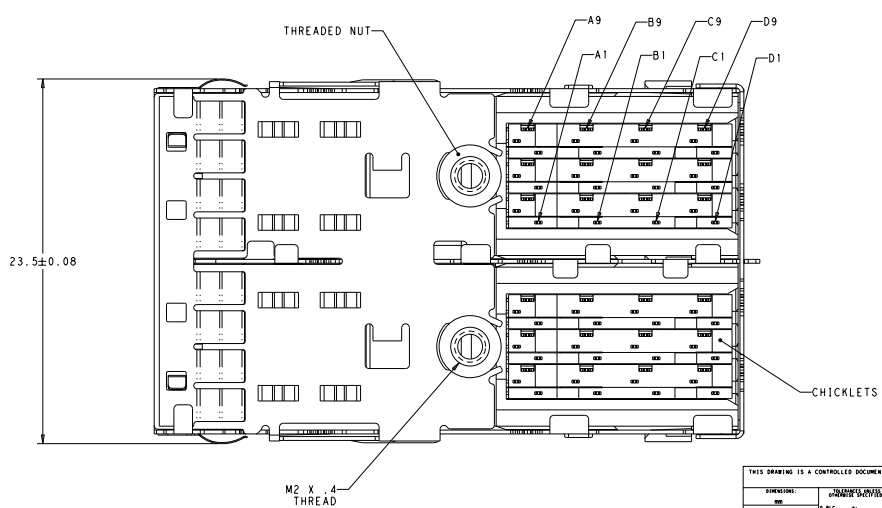


DATE SUBMITTED TO MANUFACTURE	RECEIVED FOR FABRICATION
02/08/2018	02/08/2018
BY: TE CONNECTIVITY LTD.	ALL RIGHTS RESERVED

REV	DATE	DESCRIPTION	BY	CHK	APP
1		REMOVED PRELIMINARY, ADDED NOTE 5	PLUMBID	PA	JS
8		PCI APPLICATION DIMENSION ADDED	PLUMBID	JS	JS



1. MATERIALS  
 RECEPTACLE HOUSING: LCP, BLACK, UL94V-0 RATED  
 SHIELD ASSY: NICKEL SILVER COPPER ALLOY  
 CONTACTS: COPPER ALLOY  
 EMI SPRING: COPPER ALLOY  
 THREADED NUT: BRASS  
 CHICKLETS: LCP, BLACK, UL 94V-0 RATED
  2. FINISH  
 EMI SPRING: TIN PLATE OVER NICKEL PLATE  
 NON-PLATED EDGES PERMISSIBLE  
 THREADED NUT: NICKEL PLATE
- △ CONTACT FINISH: CONFORMS TO THE REQUIREMENTS OF TE PRODUCT SPECIFICATION, 108-2399. BASED ON EIA/ECA-364-1000.01A. (CONTROLLED ENVIRONMENT APPLICATIONS) ON MATING END. TIN PLATED ON PCB TAIL
4. THREAD LENGTH OF FASTENER = PCB THICKNESS + 1.45 MAX
  5. THIS PRODUCT HAS NOT COMPLETED VALIDATION/QUALIFICATION TESTING

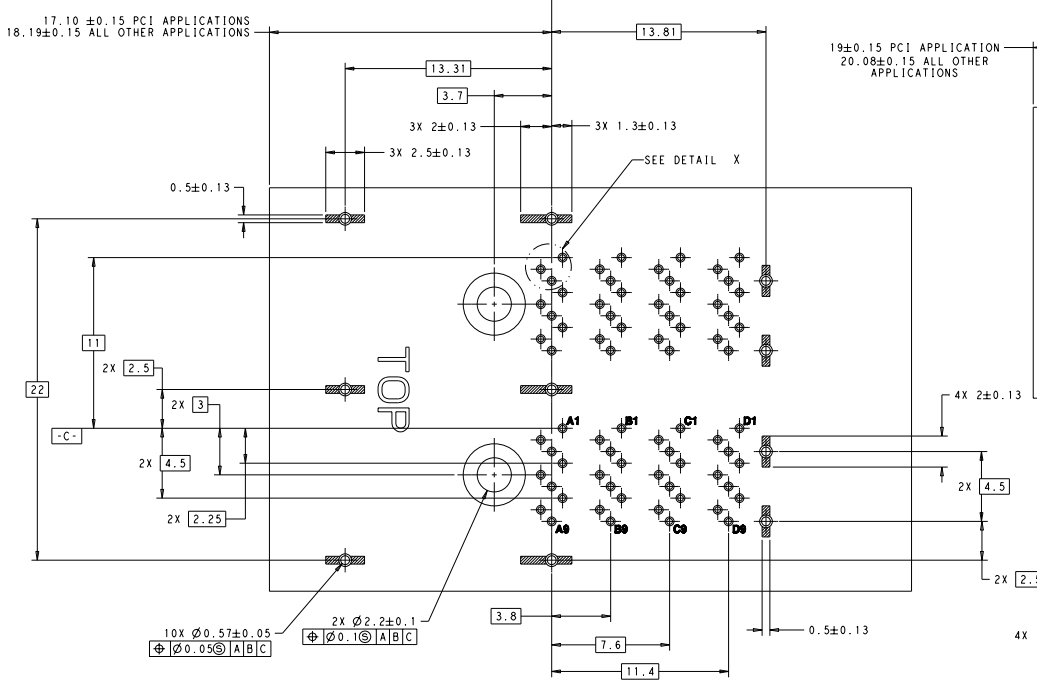


2149966-1  
PART NUMBER

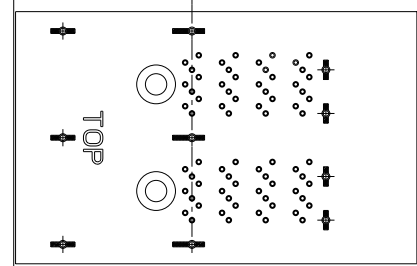
THIS DRAWING IS A CONTROLLED DOCUMENT.		REV: 00	DATE: 02/08/2018	BY: PLUMBID	CHK: PA	APP: JS
DESIGNED BY: PLUMBID	DESIGNED DATE: 02/08/2018	PROJECT NO: 108-2462	PRODUCTION SPEC: 114-13316	STATE CASE CODE (DRAWING NO): A100779	REV: 00	DATE: 02/08/2018
TE CONNECTIVITY			RECEPTACLE ASSEMBLY, MINI-SAS HD, 2X			
CUSTOMER DRAWING			PAGE 8:11 OF 2			

4483 12/2011  
Pre-ENGINEER DRAWING

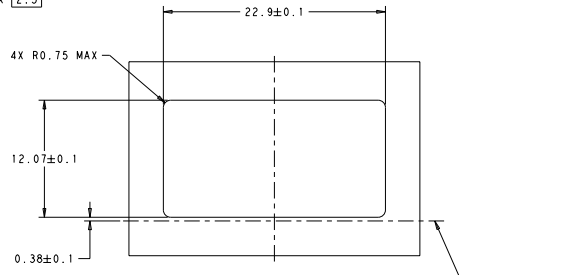
REV	DATE	DESCRIPTION	BY	CHK	APP
00		SEE SHEET 1			



19 ±0.15 PCI APPLICATION  
20.08 ±0.15 ALL OTHER APPLICATIONS

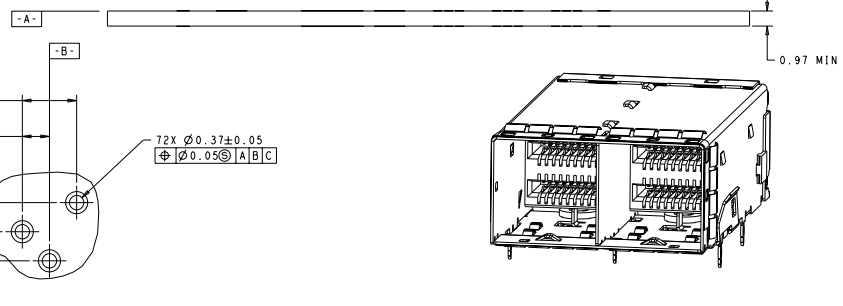


PANEL/PCB ASSEMBLY  
SCALE=5:1



RECOMMENDED I/O PANEL CUTOUT  
SCALE=5:1

RECOMMENDED PCB LAYOUT



DETAIL X  
SCALE 20:1

THIS DRAWING IS A CONTROLLED DOCUMENT.		REV: 00	DATE: 08/20/15	REVISED BY: SECHBIS	DATE: 08/20/15
DESIGNED BY: SECHBIS	DATE: 08/20/15	PROJECT NO: 108-2462	PRODUCTION DWG: 116-13316	STATE: CA	CITY: SAN JOSE
RECEPTACLE ASSEMBLY, MINI-SAS HD, 2X			SCALE: 5:1	REVISED BY: A	DATE: 08/20/15
CUSTOMER DRAWING			00779	2149966	REVISED BY: A