

4

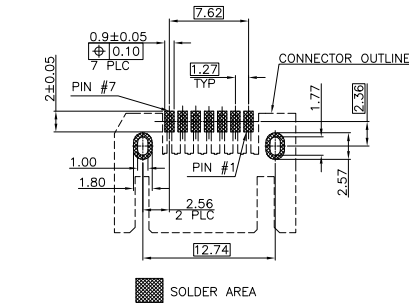
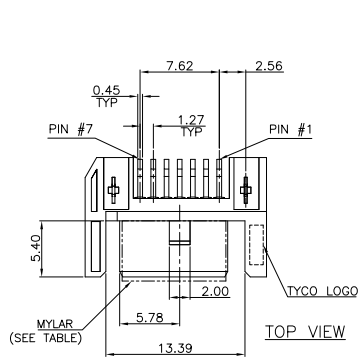
3

2

1

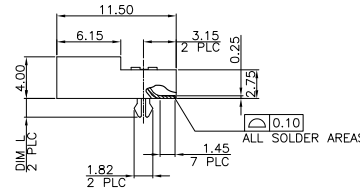
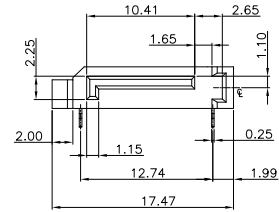
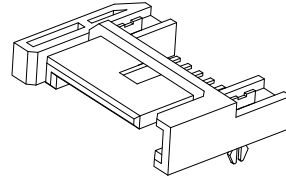
THIS DRAWING IS UNPUBLISHED. RELEASED FOR PUBLICATION
 © COPYRIGHT - BY - ALL RIGHTS RESERVED.

LOC	DIST	REVISIONS			
P	LTR	DESCRIPTION	DATE	DWN	APVD
E1		REVISED PER ECO-11-005301	11APR11	RK	HMR



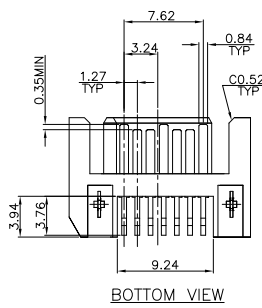
PCB TOLERANCE: ±0.05, THICKNESS: 1.2mm
 RECOMMEND PCB LAYOUT (TOP VIEW)

- NOTES:
- MATERIAL:
 HOUSING: LCP WITH 30% GF, UL 94V-0, BLACK COLOR.
 CONTACT: BRASS.
 BOARDLOCK: BRASS.
 MYLAR: PET, LXW=5.8X10.0, T=0.22mm
 - FINISH:
 CONTACT: (SEE TABLE) GOLD PLATED ON CONTACT AREA, 2.54µm [100µ"] MIN. MATTE-TIN ON SOLDER TAIL, WITH ENTIRE CONTACT UNDERPLATED 1.27µm [50µ"] MIN. NICKEL.
 BOARDLOCK: 2.54µm [100µ"] MIN. MATTE-TIN PLATING OVER 1.27µm [50µ"] MIN. NICKEL UNDERPLATING OVERALL.
 - REFLOW SOLDER CAPABLE TO 260°C PER TEC-109-201, CONDITION B.
 - PACKING: (SEE TABLE)



PIN DEFINITION (SIGNAL SEGMENT)		
NAME	TYPE	DESCRIPTION
S1	GND	
S2	A+	DIFFERENTIAL SIGNAL PAIR A
S3	A-	DIFFERENTIAL SIGNAL PAIR A
S4	GND	
S5	B-	DIFFERENTIAL SIGNAL PAIR B
S6	B+	DIFFERENTIAL SIGNAL PAIR B
S7	GND	

0.90	W	TAPE & REEL (SEE SHEET 3)	GOLD FLASH	1-1734698-4
1.80	W	TAPE & REEL (SEE SHEET 3)	0.762µm [30µ"]	1-1734698-3
1.80	W	TAPE & REEL (SEE SHEET 3)	0.381µm [15µ"]	1-1734698-2
1.80	W	TAPE & REEL (SEE SHEET 3)	GOLD FLASH	1-1734698-1
1.80	W/O	TUBE (SEE SHEET 2)	0.762µm [30µ"]	1734698-3
1.80	W/O	TUBE (SEE SHEET 2)	0.381µm [15µ"]	1734698-2
1.80	W/O	TUBE (SEE SHEET 2)	GOLD FLASH	1734698-1
DIM L (BOARDLOCK)	MYLAR	PACKAGING TYPE	MIN. GOLD THICKNESS	PART NUMBER



THIS DRAWING IS A CONTROLLED DOCUMENT.

DIMENSIONS: MM	TOLERANCES UNLESS OTHERWISE SPECIFIED:	DWN A. WU 19JUN2008	19JUN2008
	0 PLC ± -	CHK S. CHIEN 19JUN2008	
	1 PLC ± 0.3	APVD W. KODAMA 19JUN2008	
	2 PLC ± 0.25	NAME	
	3 PLC ± 0.2	PRODUCT SPEC	
	4 PLC ± -	108-57469	
	ANGLES ± 3°	APPLICATION SPEC	
MATERIAL SEE NOTE	FINISH SEE NOTE	WEIGHT 0.6 GRAMS	SIZE A3 CAGE CODE 00779 DRAWING NO C=1734698 RESTRICTED TO -
		CUSTOMER DRAWING	SCALE - SHEET 1 of 3 REV E 1

STE TE Connectivity

SERIAL ATA CONNECTOR, 7 POSITION, PLUG, RIGHT ANGLE, SMT TYPE

4

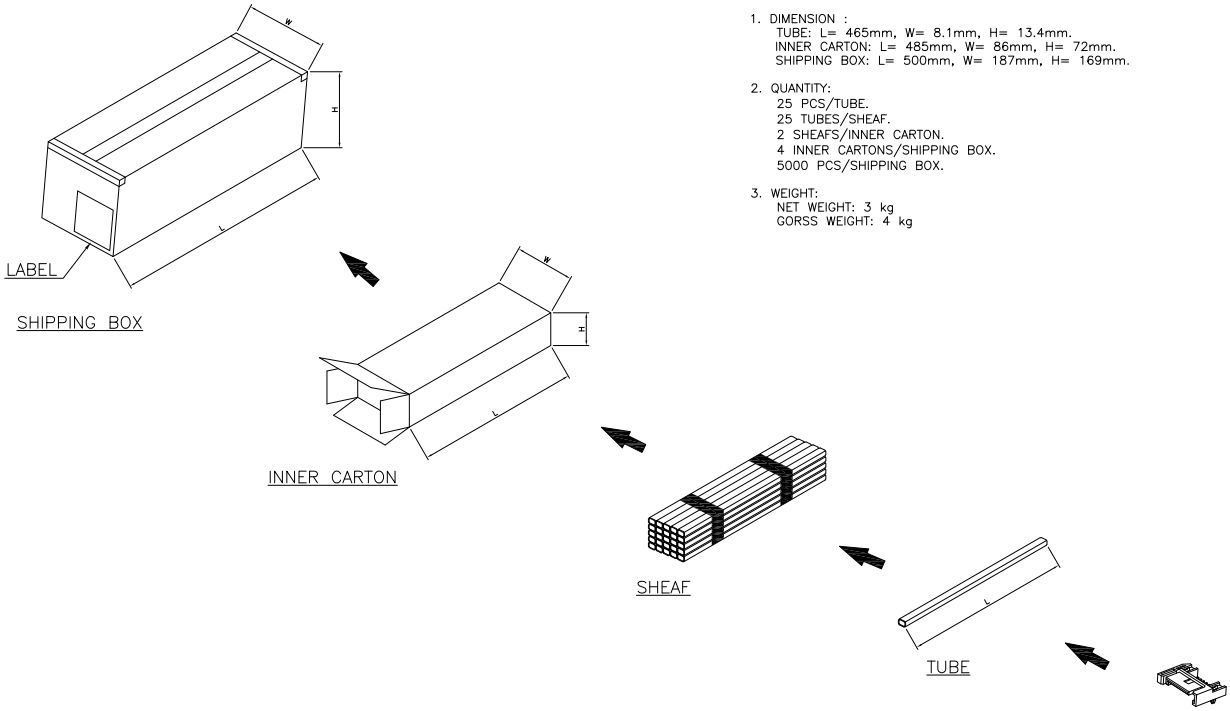
3

2

1

THIS DRAWING IS UNPUBLISHED. RELEASED FOR PUBLICATION
 © COPYRIGHT - BY - ALL RIGHTS RESERVED.

LOC	DIST	REVISIONS			
P	LTR	DESCRIPTION	DATE	DWN	APVD
SEE SHEET 1.					



- NOTES:
- DIMENSION :
 TUBE: L= 465mm, W= 8.1mm, H= 13.4mm.
 INNER CARTON: L= 485mm, W= 86mm, H= 72mm.
 SHIPPING BOX: L= 500mm, W= 187mm, H= 169mm.
 - QUANTITY:
 25 PCS/TUBE.
 25 TUBES/SHEAF.
 2 SHEAFS/INNER CARTON.
 4 INNER CARTONS/SHIPPING BOX.
 5000 PCS/SHIPPING BOX.
 - WEIGHT:
 NET WEIGHT: 3 kg
 GORSS WEIGHT: 4 kg

THIS DRAWING IS A CONTROLLED DOCUMENT.		DWN	TE TE Connectivity	
DIMENSIONS: MM		CHK		
TOLERANCES UNLESS OTHERWISE SPECIFIED:		APVD	NAME	
0 PLC ± -		PRODUCT SPEC	SERIAL ATA CONNECTOR, 7 POSITION, PLUG, RIGHT ANGLE, SMT TYPE	
1 PLC ± -		APPLICATION SPEC	SIZE	CAGE CODE
2 PLC ± -		WEIGHT	A3	00779
3 PLC ± -		CUSTOMER DRAWING	DRAWING NO	
4 PLC ± -		SCALE	C=1734698	
ANGLES ± -		SHEET	RESTRICTED TO	
FINISH		2 of 3	E 1	

4

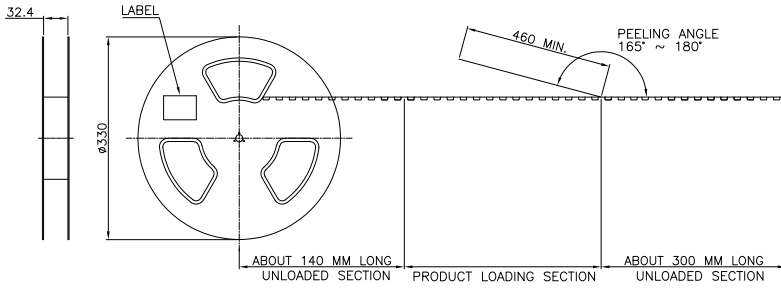
3

2

1

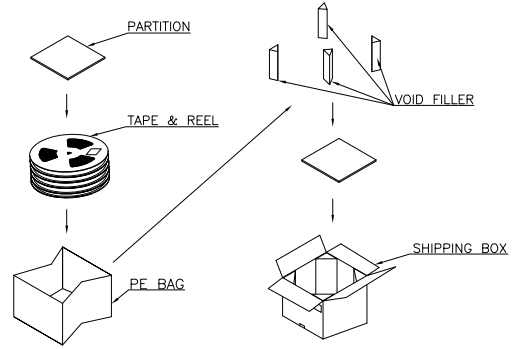
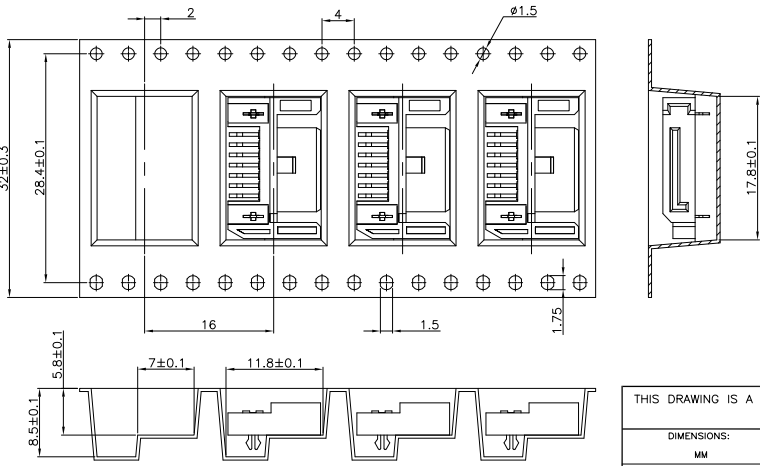
THIS DRAWING IS UNPUBLISHED. RELEASED FOR PUBLICATION
 © COPYRIGHT - BY - ALL RIGHTS RESERVED.

LOC	DIST	REVISIONS				
P	LTR	DESCRIPTION	DATE	DWN	APVD	
SEE SHEET 1.						



- NOTES:
- MATERIAL:
 - 1.1 EMBOSS CARRIER: PS.
 - 1.2 COVER TAPE: PS.
 - 1.3 SHIPPING BOX: CORRUGATED FIBER.
 - DIMENSION:
 - 2.1 REEL: W= 32.0mm.
 - 2.2 SHIPPING BOX: L= 345mm, W= 345mm, H= 210mm.
 - QUANTITY:
 - 3.1 PRIMARY PACKING: 450 PCS/TAPE.
 - 3.2 SECONDARY PACKING: 5 REEL/SHIPPING BOX (2250 PCS).
 - WEIGHT:
 - 4.1 NET WEIGHT: 0.27kg/REEL, 1.75kg/SHIPPING BOX.
 - 4.2 GROSS WEIGHT: 0.72kg/REEL, 4.42kg/SHIPPING BOX.
 - PEELING RESISTANCE: 30.0gf~120.0gf.
(PEELING SPEED: 300 mm/min)

USER DIRECTION OF UNREELING →



THIS DRAWING IS A CONTROLLED DOCUMENT.		DWN	TE TE Connectivity	
DIMENSIONS: MM		CHK		
TOLERANCES UNLESS OTHERWISE SPECIFIED:		APVD	NAME	
0 PLC ± -		PRODUCT SPEC	SERIAL ATA CONNECTOR, 7 POSITION, PLUG, RIGHT ANGLE, SMT TYPE	
1 PLC ± -		APPLICATION SPEC	SIZE	CAGE CODE
2 PLC ± -		WEIGHT	A3	00779
3 PLC ± -		CUSTOMER DRAWING	DRAWING NO	RESTRICTED TO
4 PLC ± -		SCALE	1734698	-
ANGLES ± -		SHEET	3 of 3	REV E 1