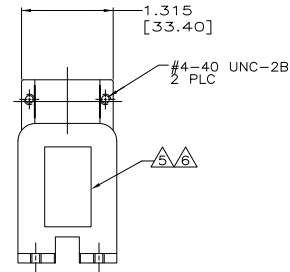
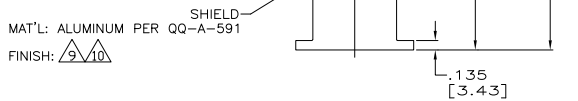
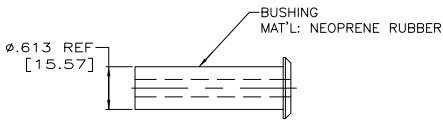
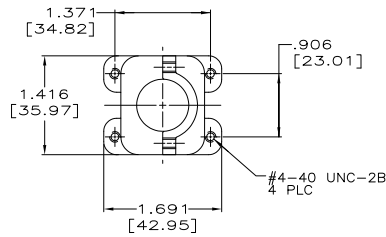
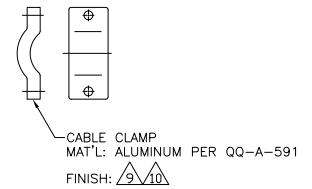
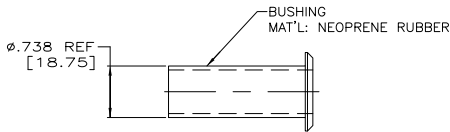


THIS DRAWING IS UNPUBLISHED. RELEASED FOR PUBLICATION - N/A.
 © COPYRIGHT N/A BY TYCO ELECTRONICS CORPORATION. ALL RIGHTS RESERVED.

LOC		DIBT		REVISIONS			
DF	BO	P	LTR	DESCRIPTION	DATE	BY	APPD
		H		REV PER ECO-08-021090	15SEP08	PK	DE



- SHIELD KIT TO ACCOMMODATE SERIES "G" PLUG OR RECEPTACLE ASSEMBLY.
- PARTS PACKAGED UNASSEMBLED.
- STANDARD PACKAGING (ONE KIT PER BAG).
- BULK PACKAGE.
- AMP, 202764-2, DATE CODE AND CAGE CODE 00779 MARKED ON EITHER SIDE.
- AMP, 202764-1, DATE CODE AND CAGE CODE 00779 MARKED ON EITHER SIDE.
- AMP, 5-202764-2, DATE CODE AND CAGE CODE 00779 MARKED ON EITHER SIDE.
- AMP, 5-202764-1, DATE CODE AND CAGE CODE 00779 MARKED ON EITHER SIDE.

- ZINC PLATE PER ASTM-B-633, .0002-.0004 THK.
- ELECTROLESS NICKEL PLATE PER SAE-AMS-C-26074, .0004-.0008 THK (NO INTENTIONAL ADDITIONS OF LEAD OR CADMIUM PER DFE STANDARD 230-700).
- CARBON STEEL.
- STAINLESS STEEL.
- PASSIVATED.

[9][10]	AS SHOWN	5-202764-3
[9][10]	WITHOUT RUBBER BUSHINGS	5-202764-2
[9][10]	AS SHOWN	5-202764-1
[9][10]	AS SHOWN	202764-3
[9][10]	WITHOUT RUBBER BUSHINGS	202764-2
[9][10]	AS SHOWN	202764-1

REMARKS	DESCRIPTION	PART NUMBER
THIS DRAWING IS A CONTROLLED DOCUMENT.	SHIELD KIT FOR SERIES G 1 BLOCK ASSY	

DIMENSIONS: INCHES 0 PLC ± .010 1 PLC ± .008 2 PLC ± .005 3 PLC ± .010(0.25) 4 PLC ± .005 ANGLES ± .5° FINISH -	DATE: 11-MAR-98 C.C. THOMAS 12-MAR-98 S. KROH 12-MAR-98 B. KROH 12-MAR-98 APPLICATION SPEC: - WEIGHT: - CUSTOMER DRAWING	Tyco Electronics Corporation Harrisburg, Pa 17105-3608 SIZE: A2 CAGE CODE: 00779 DRAWING NO: C-202764 SCALE: 1:1 SHEET: 1 of 1 REV: H
--------------------------------------------------------------------------------------------------------------------------------------	-----------------------------------------------------------------------------------------------------------------------------------------------------	------------------------------------------------------------------------------------------------------------------------------------------------------------