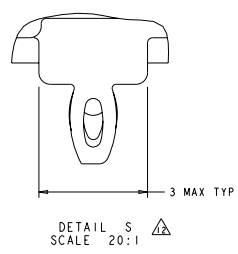
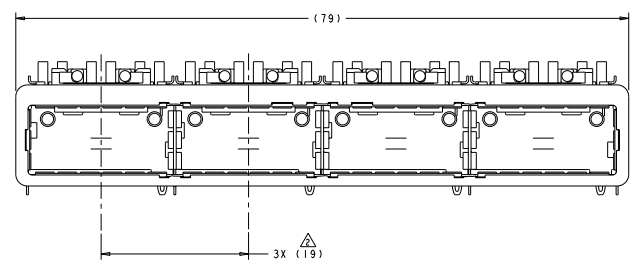
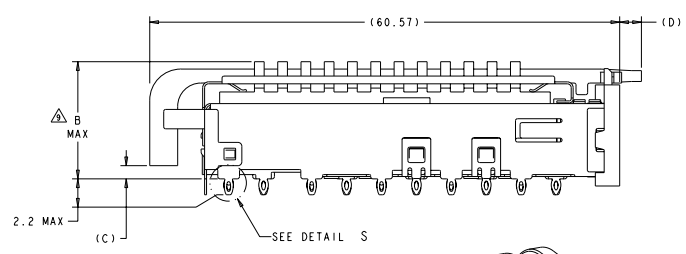


| REV | DATE | DESCRIPTION | BY | CHK | APP |
|-----|---------------------------|-------------|--------|------|------|
| B | REV PER ECO-09-020440 | | EMMORR | CR | J.P. |
| C | REVISED PER ECO-10-018954 | | EMMORR | C.V. | E.B. |

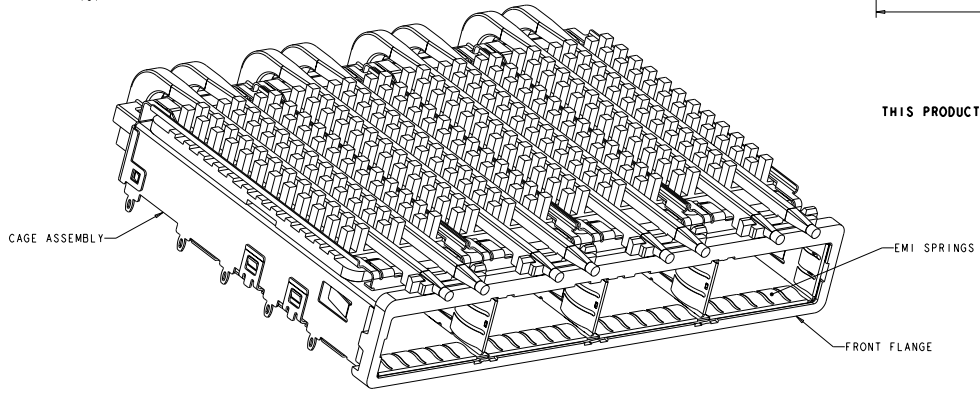


- △ CAGE ASSEMBLY MATERIAL: NICKEL SILVER, 0.25 THICK
- HEAT SINK MATERIAL: ALUMINUM
- HEAT SINK CLIP MATERIAL: STAINLESS STEEL
- EMI SPRING MATERIAL: COPPER ALLOY
- FRONT FLANGE MATERIAL: ZINC ALLOY
- LIGHT PIPE MATERIAL: CLEAR POLYCARBONATE
- △ PITCH BETWEEN PORTS OF ONE 1X4 CAGE ASSEMBLY.
- △ SPACING BETWEEN CAGES ON THE SAME PC BOARD, TO BE SPECIFIED BY CUSTOMER, MUST COMPLY WITH MINIMUM DIMENSIONS SHOWN.
- △ REFERENCE APPLICATION SPEC 114-13218 FOR RECOMMENDED DRILL HOLE DIAMETER AND PLATING THICKNESS.
- △ DATUMS AND BASIC DIMENSIONS ESTABLISHED BY CUSTOMER.
- △ DIMENSION F IS THE NOMINAL THICKNESS OF CUSTOMER SUPPLIED PC BOARD.
 SINGLE SIDED PC BOARD MINIMUM THICKNESS = 1.45mm
 DOUBLE SIDED PC BOARD MINIMUM THICKNESS = 2.2mm PER OSFP.
- △ HEAT SINKS, LIGHT PIPES, AND HEAT SINK CLIPS SHIPPED ASSEMBLED TO CAGE ASSEMBLY. CAGE ASSEMBLY MAY BE PRESSED INTO THE PCB AS SHIPPED.
- △ DATUM **-A-** IS TOP SURFACE OF PC BOARD.
- △ DIMENSION APPLIES WITH MODULE INSERTED IN CAGE.
- △ UNPLATED THRU HOLE.
- 11. MATES WITH OSFP MSA COMPATIBLE TRANSCEIVER.
- △ SURFACE TRACES PERMITTED WITHIN THIS AREA EXCEPT WHERE CAGE STANDOFFS, SHOWN IN DETAIL S, CONTACT PC BOARD.
- △ BASELINE FOR THESE DIMENSIONS IS THE CENTER OF COMPLIANT PIN HOLE.
- △ DATE CODE (YYWW) MARKED ON TOP OF CAGE AND CONCEALED BY HEAT SINKS APPLIES TO CAGE ASSEMBLY ONLY.

- △ REFERENCE APP SPEC 114-13218 FOR GASKET THICKNESS CALCULATION.
- △ EMI SPRING FINISH: 2µm MINIMUM TIN
 FRONT FLANGE FINISH: 3µm MINIMUM TIN OVER 1.27µm MINIMUM NICKEL OVER 5.08µm MINIMUM COPPER.
- HEAT SINK FINISH: NICKEL
- △ HEAT SINKS AND CLIPS SHIPPED ASSEMBLED TO CAGE ASSEMBLY. CAGE ASSEMBLY MAY BE PRESSED INTO THE PCB AS SHIPPED. LIGHT PIPES, SHIPPED UNATTACHED, MUST BE ASSEMBLED BY CUSTOMER AFTER THE CASE IS SEATED IN THE PCB.



THIS PRODUCT HAS NOT COMPLETED VALIDATION/QUALIFICATION TESTING

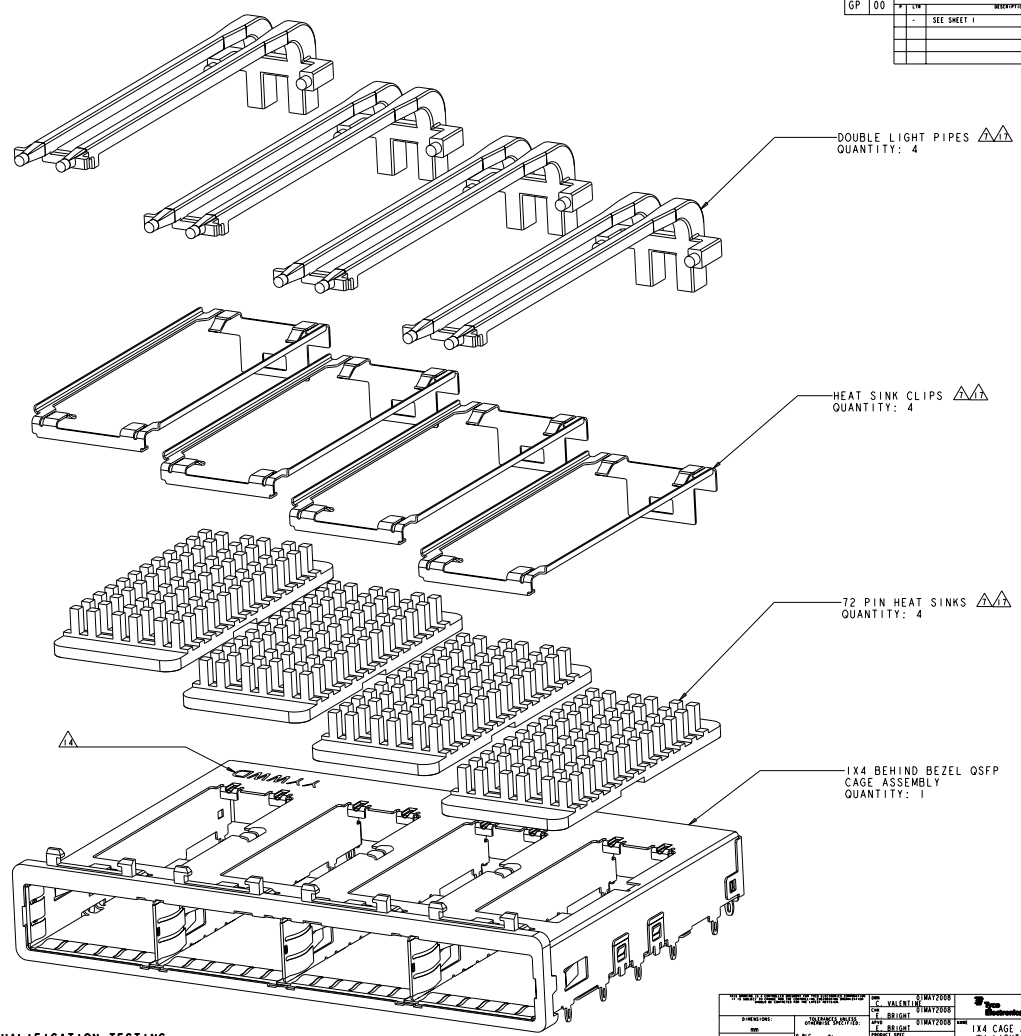


| | | | | | | |
|---|---------|-----|------|------|-------------------|-------------|
| △ | 1.3-1.4 | 5.7 | 2.15 | 16.0 | SAN | 2057183-5 |
| △ | 1.3-1.4 | 5.7 | 2.15 | 13.7 | PCI | 2057183-4 |
| △ | 0.8-1.1 | 2.8 | 1.70 | 23.0 | NETWORKING | 2057183-3 |
| △ | 0.8-1.1 | 2.8 | 1.70 | 16.0 | SAN | 2057183-2 |
| △ | 0.8-1.1 | 2.8 | 1.70 | 13.7 | PCI | 2057183-1 |
| | E | D | C | B | HEAT SINK PROFILE | PART NUMBER |

| | | | |
|-------------|--|-----------|--------|
| DATE | 11/14/2008 | BY | EMMORR |
| REV | 00 | BY | EMMORR |
| DESCRIPTION | 1X4 CAGE ASSEMBLY, BEHIND BEZEL, W/ LIGHT PIPES AND HEAT SINKS, OSFP | | |
| STATE | CA | CAGE CODE | 00779 |
| REV | 00 | BY | EMMORR |
| DATE | 11/14/2008 | BY | EMMORR |
| DESCRIPTION | CUSTOMER DRAWING | | |

8 DATE SHIPPED TO MANUFACTURE RECEIVED FOR FABRICATION 7000
 7000
 7000
 BY TECH ELECTRONICS CORPORATION. ALL RIGHTS RESERVED

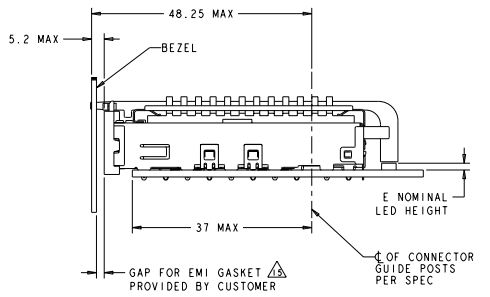
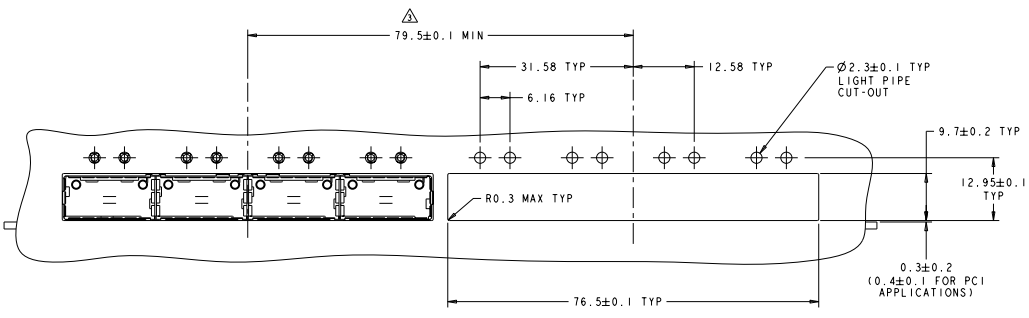
| REV | DATE | REVISIONS | BY | CHK | APP |
|-----|------|-------------|----|-----|-----|
| GP | 00 | | | | |
| | | SEE SHEET 1 | | | |
| | | | | | |
| | | | | | |



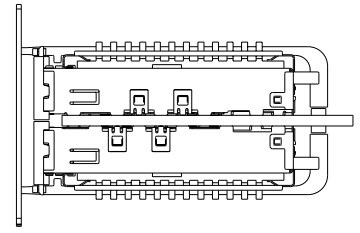
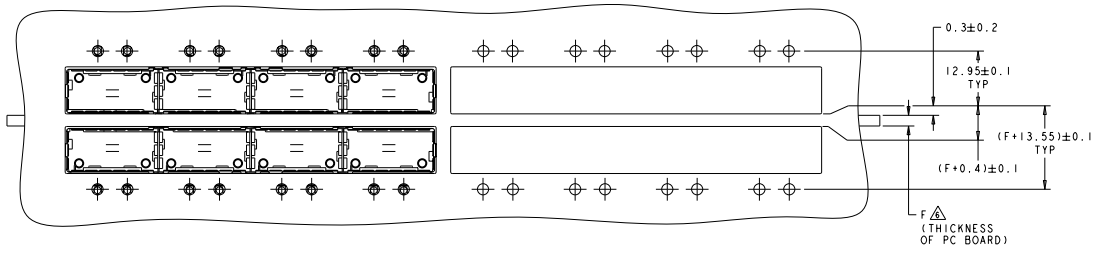
THIS PRODUCT HAS NOT COMPLETED VALIDATION/QUALIFICATION TESTING

| | | | | | | | | | | | | | | |
|---|------------|---|--|-------------|------------|----------|-----|-------------|---|-------|---------|--|--|---|
| TITLE: IX4 BEHIND BEZEL OSFP CAGE ASSEMBLY DATE: 01/24/2018 DRAWN BY: STW CHECKED BY: STW APPR'D BY: STW PART NO.: 100-2286 REV: 00 QTY: 1 UNIT: 1 PRICE: | | MAT2008 BLIGHT BLIGHT 100-2286 SPECIFICATION DOC: 114-13218 REVISION: | <table border="1"> <tr> <td>DATE</td> <td>SCALE CODE</td> <td>QUANTITY</td> <td>NO.</td> <td>DESCRIPTION</td> </tr> <tr> <td>A</td> <td>00779</td> <td>2057183</td> <td></td> <td></td> </tr> </table> | DATE | SCALE CODE | QUANTITY | NO. | DESCRIPTION | A | 00779 | 2057183 | | | Tech Electronics Harrisburg, PA 17105-3600 IX4 CAGE ASSEMBLY, BEHIND BEZEL, W/ LIGHT PIPES AND HEAT SINKS, OSFP CUSTOMER DRAWING DRAWN BY: STW CHECKED BY: STW APPR'D BY: STW |
| DATE | SCALE CODE | QUANTITY | NO. | DESCRIPTION | | | | | | | | | | |
| A | 00779 | 2057183 | | | | | | | | | | | | |

| REVISONS | | DATE | BY | CHK |
|----------|----|------|----|-----|
| GP | 00 | | | |
| | | | | |
| | | | | |
| | | | | |



ONE SIDED CONFIGURATION
 SCALE 5:2

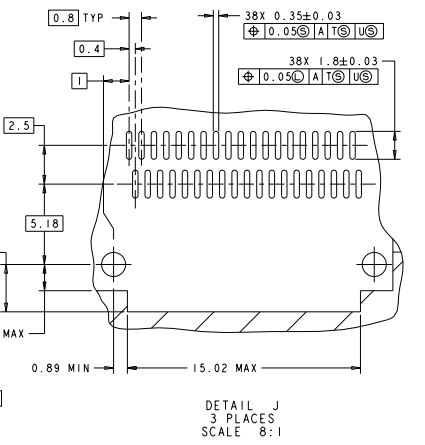
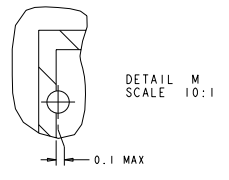
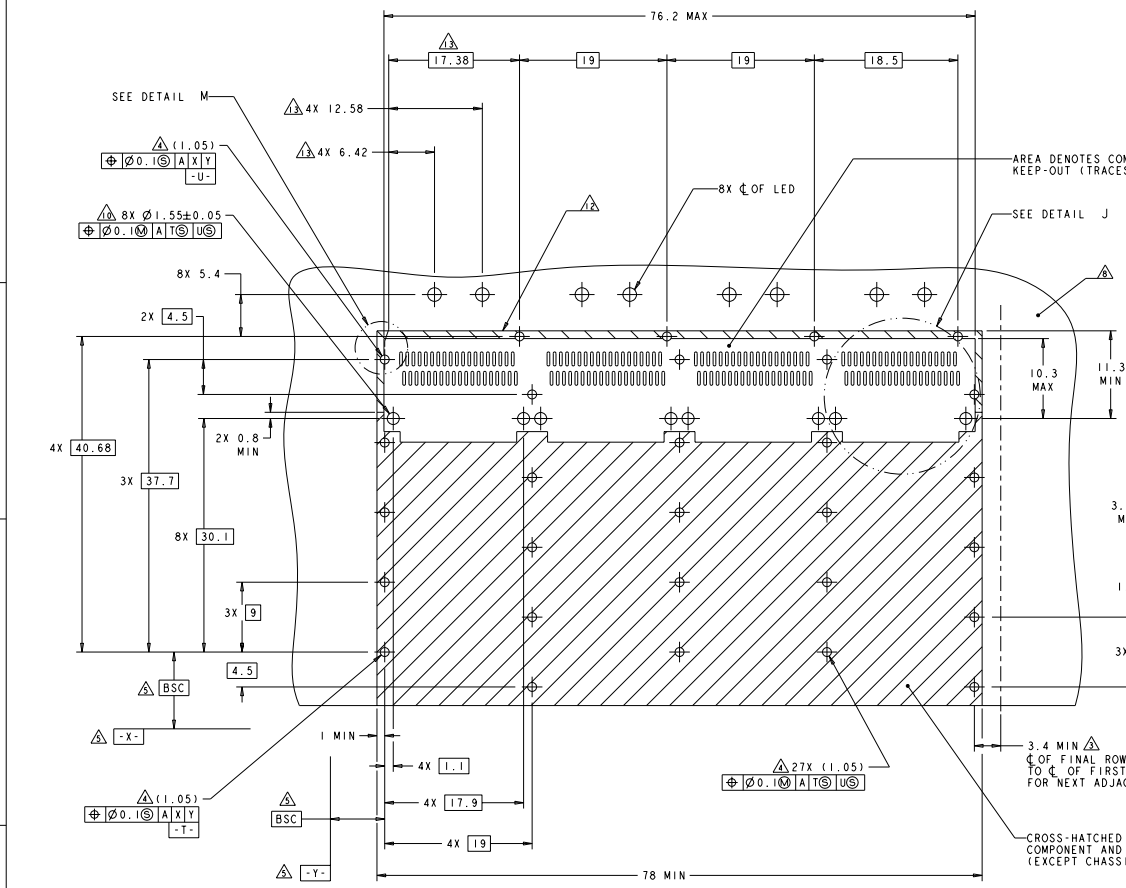


BELLY TO BELLY CONFIGURATION
 SIMILAR TO ONE SIDED
 EXCEPT WHERE NOTED
 SCALE 5:2

THIS PRODUCT HAS NOT COMPLETED VALIDATION/QUALIFICATION TESTING

| | | | | | |
|-------------|--|----|------------|-----|----|
| DATE | 02/28/2022 | BY | 02/28/2022 | REV | 00 |
| DESCRIPTION | 1X4 CAGE ASSEMBLY, BEHIND BEZEL, W/ LIGHT PIPES AND HEAT SINKS, GSPF | | | | |
| DATE | 02/28/2022 | BY | 02/28/2022 | REV | 00 |
| DESCRIPTION | 1X4 CAGE ASSEMBLY, BEHIND BEZEL, W/ LIGHT PIPES AND HEAT SINKS, GSPF | | | | |
| DATE | 02/28/2022 | BY | 02/28/2022 | REV | 00 |
| DESCRIPTION | 1X4 CAGE ASSEMBLY, BEHIND BEZEL, W/ LIGHT PIPES AND HEAT SINKS, GSPF | | | | |
| DATE | 02/28/2022 | BY | 02/28/2022 | REV | 00 |
| DESCRIPTION | 1X4 CAGE ASSEMBLY, BEHIND BEZEL, W/ LIGHT PIPES AND HEAT SINKS, GSPF | | | | |

| REV | DATE | DESCRIPTION | BY | CHK | APP |
|-----|------|-------------|----|-----|-----|
| 00 | | SEE SHEET 1 | | | |

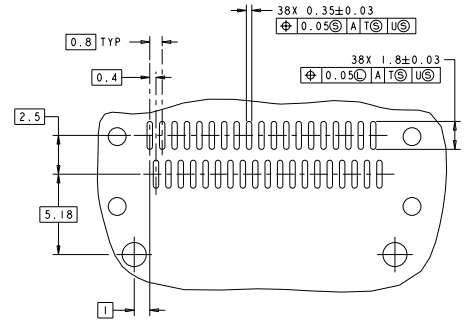
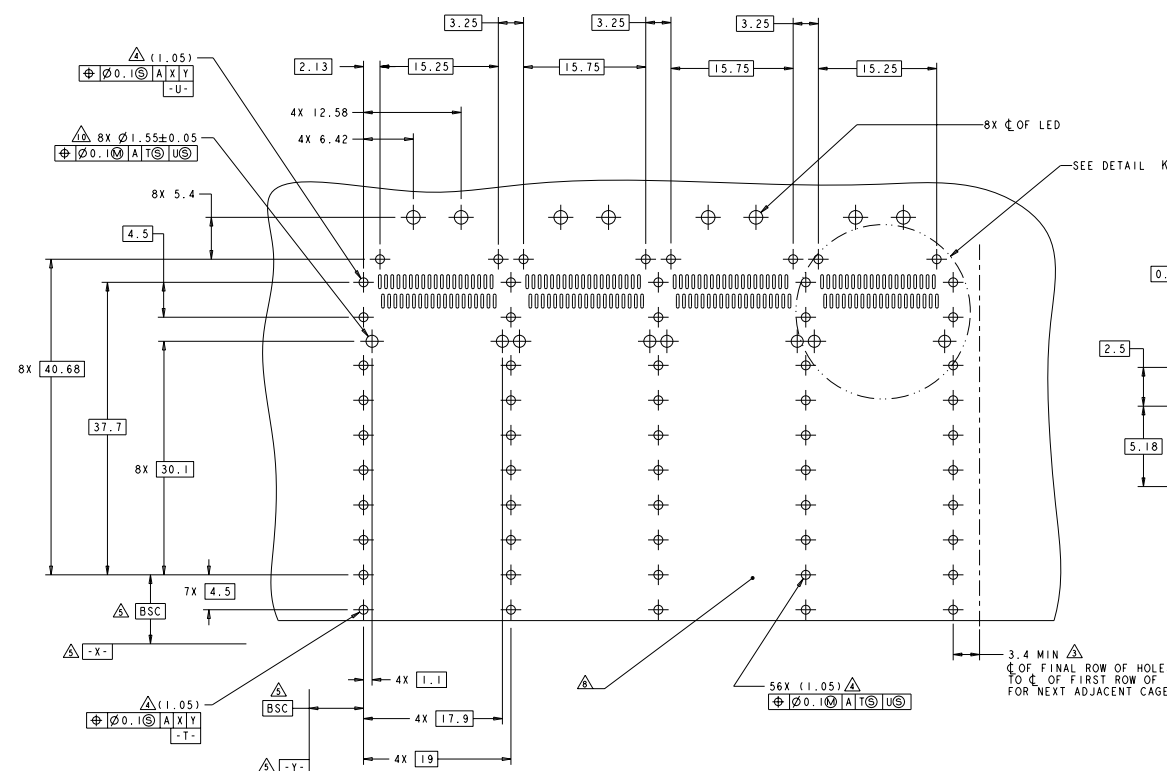


RECOMMENDED PC BOARD LAYOUT
SINGLE SIDE MOUNT CONFIGURATION
SCALE 4:1

THIS PRODUCT HAS NOT COMPLETED VALIDATION/QUALIFICATION TESTING

| | | | | | |
|-------------------|--|------------------|---------------------------------|---------------------------------|------------------|
| DATE: 08/24/2006 | BY: TPC ELECTRONICS CORPORATION | REV: 00 | DATE: 08/24/2006 | BY: TPC ELECTRONICS CORPORATION | REV: 00 |
| PROJECT: 188-2286 | DESCRIPTION: 1X4 CAGE ASSEMBLY, BEHIND BEZEL, W/ LIGHT PIPES AND HEAT SINKS, 852FP | DATE: 08/24/2006 | BY: TPC ELECTRONICS CORPORATION | REV: 00 | DATE: 08/24/2006 |
| DATE: 08/24/2006 | BY: TPC ELECTRONICS CORPORATION | REV: 00 | DATE: 08/24/2006 | BY: TPC ELECTRONICS CORPORATION | REV: 00 |
| DATE: 08/24/2006 | BY: TPC ELECTRONICS CORPORATION | REV: 00 | DATE: 08/24/2006 | BY: TPC ELECTRONICS CORPORATION | REV: 00 |

| REV. NO. | | DESCRIPTION | | DATE | BY | CHK |
|----------|----|-------------|--|------|----|-----|
| 00 | GP | SEE SHEET 1 | | | | |



RECOMMENDED PCB BOARD LAYOUT
 BELLY TO BELLY CONFIGURATION
 SEE SHEET 4 FOR COMPONENT AND TRACE KEEP-OUTS
 SCALE 4:1

THIS PRODUCT HAS NOT COMPLETED VALIDATION/QUALIFICATION TESTING

| | | | | | | | | | |
|--|---------|--------|---------|---------|---|---------|--------|---------|---------|
| DATE: 7/20/18 | REV: 00 | BY: GP | CHK: GP | APP: GP | DATE: 7/20/18 | REV: 00 | BY: GP | CHK: GP | APP: GP |
| TECH ELECTRONICS CORPORATION 1628 W. MARKET STREET HARRISBURG, PA 17105-3600 TEL: 717-653-8800 FAX: 717-653-8801 WWW.TECH-USA.COM | | | | | TECH ELECTRONICS 1X4 CAGE ASSEMBLY, BEHIND BEZEL, W/ LIGHT PIPES AND HEAT SINKS, RSTP STATE CASE CODE (SEE SHEET 4) A 00779 2057183 CUSTOMER DRAWING | | | | |