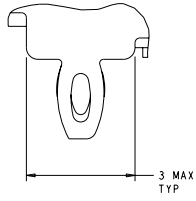


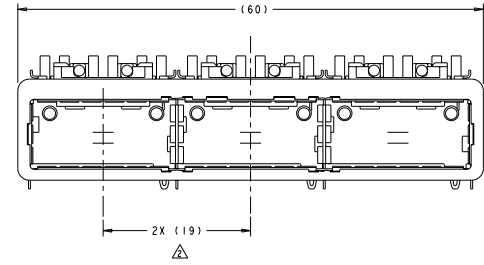
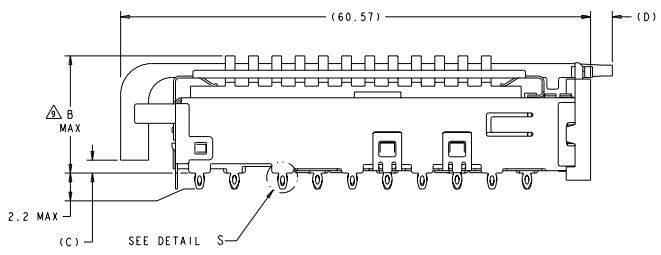
REVISONS		DATE	BY	CHK	APP
B	REV PER ECO-09-020440				
C	REVISED PER ECO-10-018954				



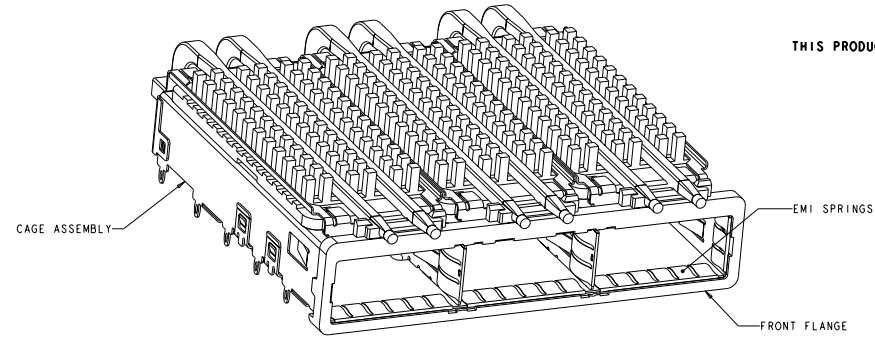
DETAIL S
 SCALE 20:1

- △ CAGE ASSEMBLY MATERIAL: NICKEL SILVER, 0.25 THICK
- HEAT SINK MATERIAL: ALUMINUM
- HEAT SINK CLIP MATERIAL: STAINLESS STEEL
- EMI SPRINGS MATERIAL: COPPER ALLOY
- FRONT FLANGE MATERIAL: ZINC ALLOY
- LIGHT PIPE MATERIAL: CLEAR POLYCARBONATE
- △ PITCH BETWEEN PORTS OF ONE 1X3 CAGE ASSEMBLY.
- △ SPACING BETWEEN CAGES ON THE SAME PC BOARD, TO BE SPECIFIED BY CUSTOMER, MUST COMPLY WITH MINIMUM DIMENSIONS SHOWN.
- △ REFERENCE APPLICATION SPEC 114-13218 FOR RECOMMENDED DRILL HOLE DIAMETER AND PLATING THICKNESS.
- △ DATUMS AND BASIC DIMENSIONS ESTABLISHED BY CUSTOMER.
- △ DIMENSION F IS THE NOMINAL THICKNESS OF CUSTOMER SUPPLIED PC BOARD.
 SINGLE SIDED PC BOARD MINIMUM THICKNESS = 1.45mm
 DOUBLE SIDED PC BOARD MINIMUM THICKNESS = 2.2mm PER QSFP
- △ HEAT SINKS, LIGHT PIPES, AND HEAT SINK CLIPS SHIPPED ASSEMBLED TO CAGE ASSEMBLY. CAGE ASSEMBLY MAY BE PRESSED INTO THE PCB AS SHIPPED.
- △ DATUM \overline{A} IS TOP SURFACE OF PC BOARD.
- △ DIMENSION APPLIES WITH MODULE INSERTED IN CAGE.
- △ UNPLATED THRU HOLE.
- 11. MATES WITH QSFP MSA COMPATIBLE TRANSCEIVER.
- △ SURFACE TRACES PERMITTED WITHIN THIS AREA EXCEPT WHERE CAGE STANDOFFS, SHOWN IN DETAIL S, CONTACT PC BOARD.
- △ BASELINE FOR THESE DIMENSIONS IS THE CENTER OF COMPLIANT PIN HOLE.
- △ DATE CODE (YYWW) MARKED ON TOP OF CAGE AND CONCEALED BY HEAT SINKS APPLIES TO CAGE ASSEMBLY ONLY.

- △ REFERENCE APP SPEC 114-13218 FOR GASKET THICKNESS CALCULATION.
- △ EMI SPRING FINISH: 2µm MIN TIN
 FRONT FLANGE FINISH: 3µm MIN TIN OVER 1.27µm MIN NICKEL
 OVER 5.08µm MIN COPPER.
- △ HEAT SINK FINISH: NICKEL.
- △ HEAT SINKS AND CLIPS SHIPPED ASSEMBLED TO CAGE ASSEMBLY. CAGE ASSEMBLY MAY BE PRESSED IN TO THE PCB AS SHIPPED. LIGHT PIPES, SHIPPED UNATTACHED, MUST BE ASSEMBLED BY CUSTOMER AFTER THE CAGE IS SEATED IN THE PCB.



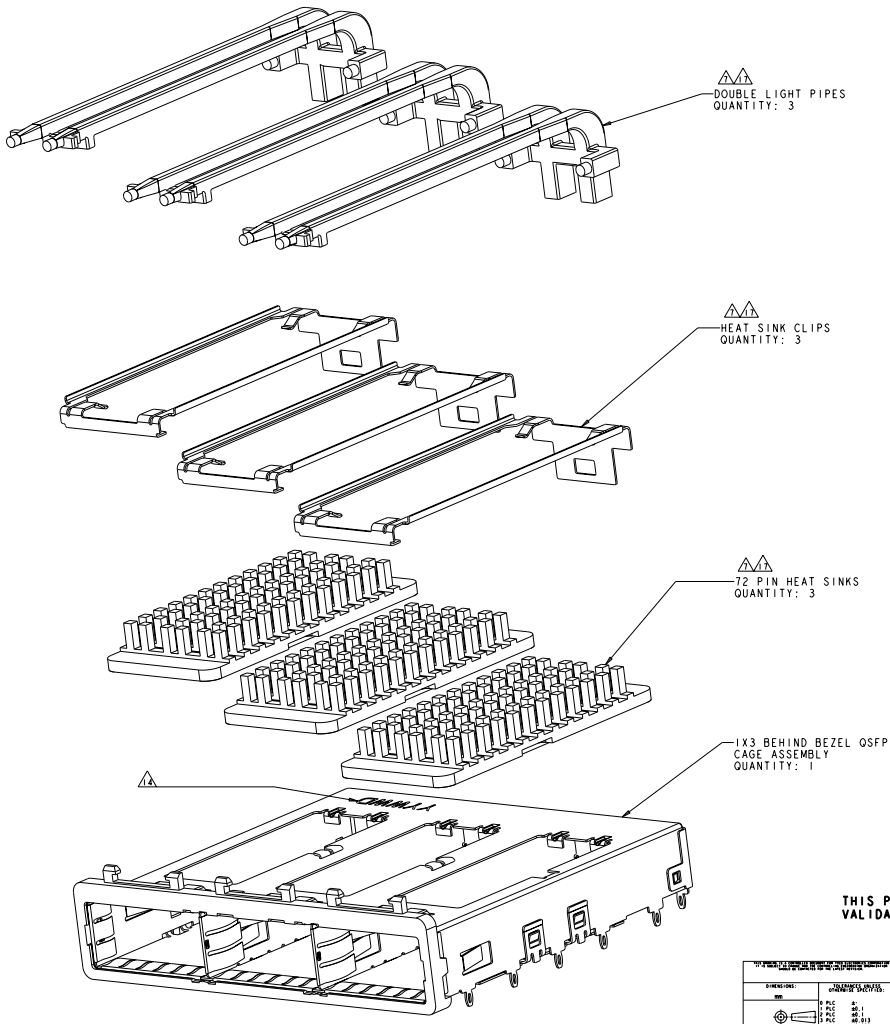
THIS PRODUCT HAS NOT COMPLETED VALIDATION/QUALIFICATION TESTING



△	0.8-1.1	2.0	1.70	23.0	NETWORKING	2057042-8
△	0.8-1.1	2.0	1.70	16.0	SAN	2057042-7
△	0.8-1.1	2.0	1.70	13.7	PCI	2057042-6
△	1.3-1.4	5.7	2.15	16.0	SAN	2057042-5
△	1.3-1.4	5.7	2.15	13.7	PCI	2057042-4
△	0.8-1.1	2.8	1.70	23.0	NETWORKING	2057042-3
△	0.8-1.1	2.8	1.70	16.0	SAN	2057042-2
△	0.8-1.1	2.8	1.70	13.7	PCI	2057042-1
	E	D	C	B	HEAT SINK PROFILE	PART NUMBER

DATE: 02/25/2008 TIME: 10:00 AM USER: j... PROJECT: 114-13218 PART: 2057042-8	DATE: 02/25/2008 TIME: 10:00 AM USER: j... PROJECT: 114-13218 PART: 2057042-8	DATE: 02/25/2008 TIME: 10:00 AM USER: j... PROJECT: 114-13218 PART: 2057042-8	DATE: 02/25/2008 TIME: 10:00 AM USER: j... PROJECT: 114-13218 PART: 2057042-8	DATE: 02/25/2008 TIME: 10:00 AM USER: j... PROJECT: 114-13218 PART: 2057042-8	DATE: 02/25/2008 TIME: 10:00 AM USER: j... PROJECT: 114-13218 PART: 2057042-8	DATE: 02/25/2008 TIME: 10:00 AM USER: j... PROJECT: 114-13218 PART: 2057042-8	DATE: 02/25/2008 TIME: 10:00 AM USER: j... PROJECT: 114-13218 PART: 2057042-8
---	---	---	---	---	---	---	---

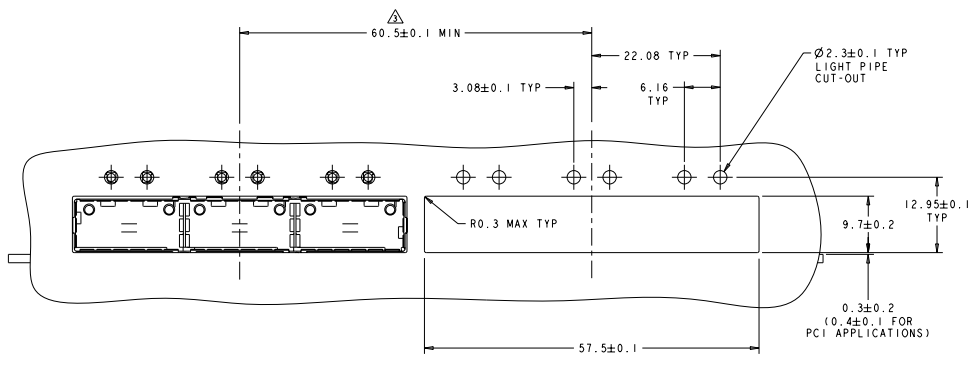
REVISOR		REVISIONS	
NO.	DATE	DESCRIPTION	BY
GP	00	SEE SHEET 1	



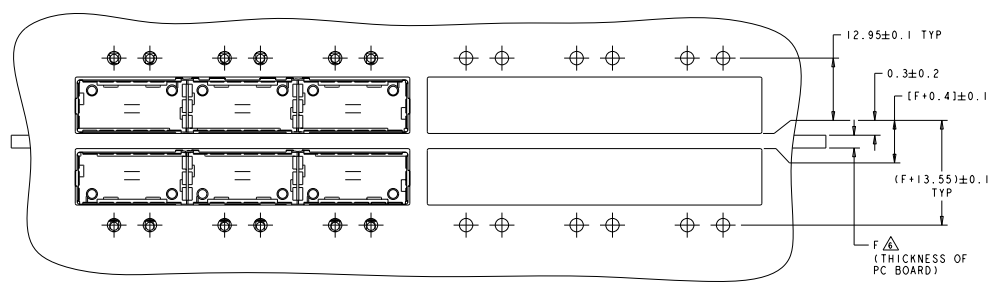
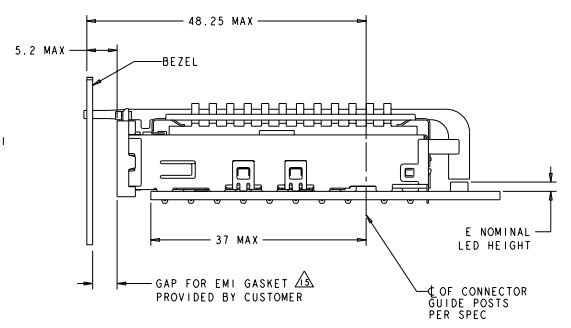
**THIS PRODUCT HAS NOT COMPLETED
 VALIDATION/QUALIFICATION TESTING**

REV: 00 DATE: 08/20/2018 BY: [Signature] TITLE: [Title]		PART: 100-2286 QTY: 3 SPECIFICATION: OSFP		CUSTOMER DRAWING: A PART NO: 00779 REV: 2057042	
DRAWN: [Name] CHECKED: [Name]		DATE: 08/20/2018 TIME: 10:00 AM		SHEET: 2 OF 5 SCALE: 1:1	

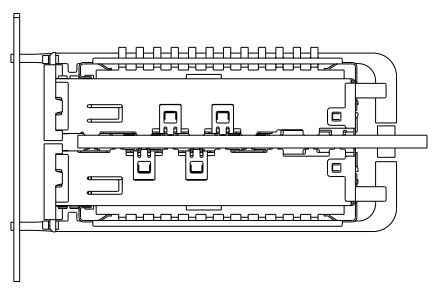
REV	DATE	DESCRIPTION	BY	CHK	APP
GP	00	SEE SHEET 1			



ONE SIDED CONFIGURATION
 SCALE 3:1



BELLY TO BELLY CONFIGURATION SIMILAR TO ONE SIDED EXCEPT WHERE NOTED
 SCALE 3:1

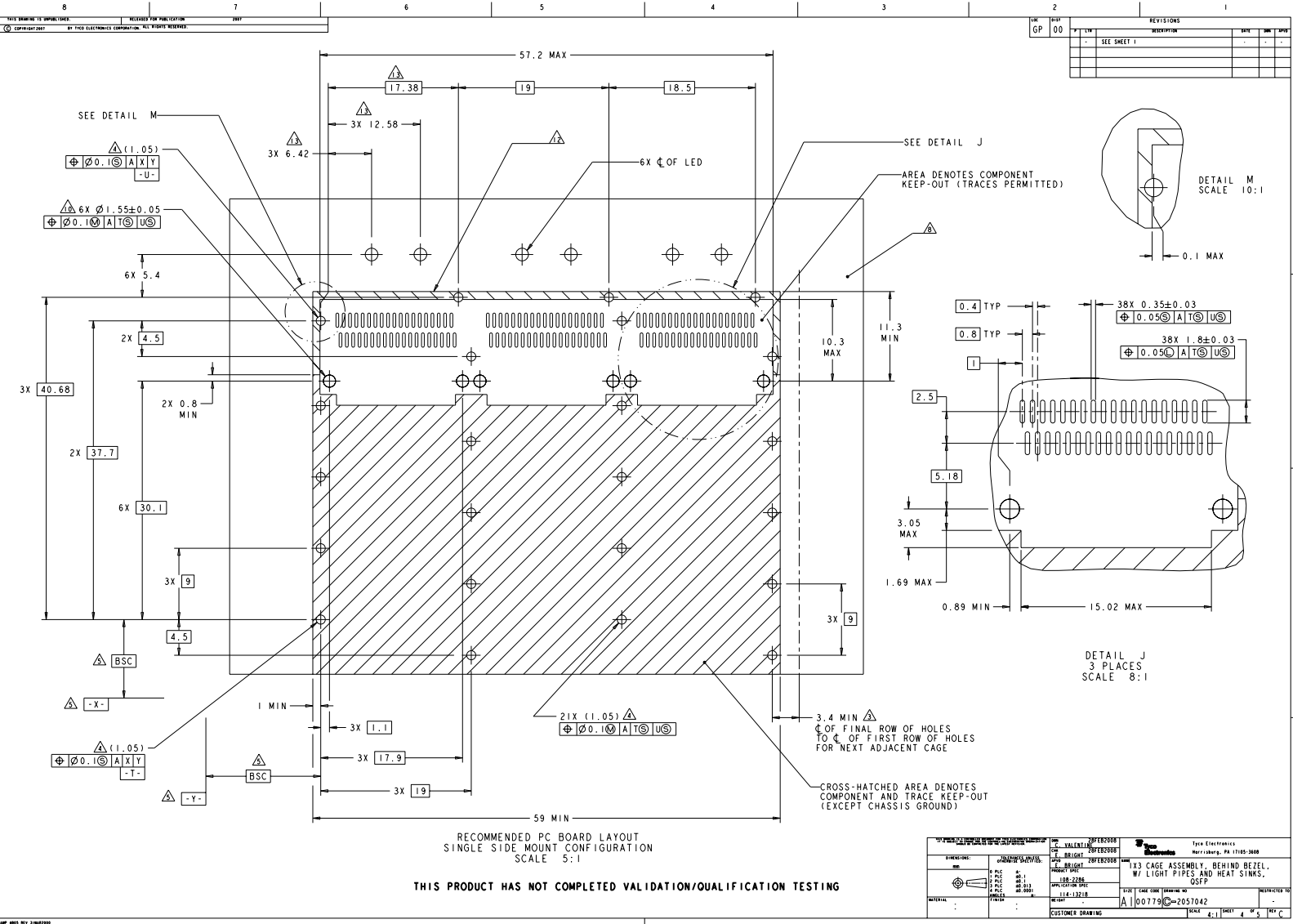


THIS PRODUCT HAS NOT COMPLETED VALIDATION/QUALIFICATION TESTING

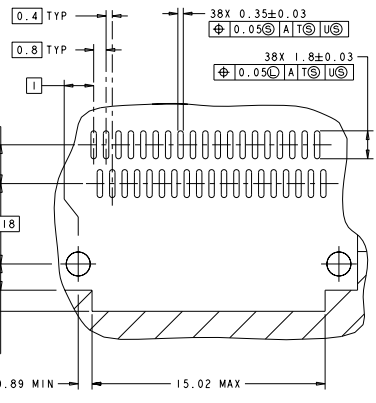
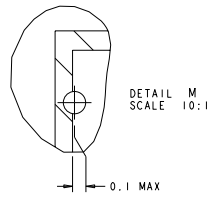
REV	DATE	DESCRIPTION	BY	CHK	APP
GP	00	SEE SHEET 1			

DATE	REV	DESCRIPTION	BY	CHK	APP
02/02/07	01	REVISED TO ADD LIGHT PIPE CUT-OUT	JL	JK	JK
02/02/07	02	REVISED TO ADD BEZEL	JL	JK	JK
02/02/07	03	REVISED TO ADD LEDS	JL	JK	JK
02/02/07	04	REVISED TO ADD HEAT SINKS	JL	JK	JK
02/02/07	05	REVISED TO ADD EMI GASKET	JL	JK	JK

DATE	REV	DESCRIPTION	BY	CHK	APP
02/02/07	06	REVISED TO ADD LIGHT PIPE CUT-OUT	JL	JK	JK
02/02/07	07	REVISED TO ADD BEZEL	JL	JK	JK
02/02/07	08	REVISED TO ADD LEDS	JL	JK	JK
02/02/07	09	REVISED TO ADD HEAT SINKS	JL	JK	JK
02/02/07	10	REVISED TO ADD EMI GASKET	JL	JK	JK



REV	DATE	DESCRIPTION	BY	CHK	APP
00		SEE SHEET 1			



RECOMMENDED PC BOARD LAYOUT
SINGLE SIDE MOUNT CONFIGURATION
SCALE 5:1

THIS PRODUCT HAS NOT COMPLETED VALIDATION/QUALIFICATION TESTING

REV	DATE	DESCRIPTION	BY	CHK	APP
00		SEE SHEET 1			

DATE	REV	DESCRIPTION	BY	CHK	APP
11-16-13	00	REVISED TO ADD DIMENSIONS FOR LIGHT PIPES AND HEAT SINKS.			

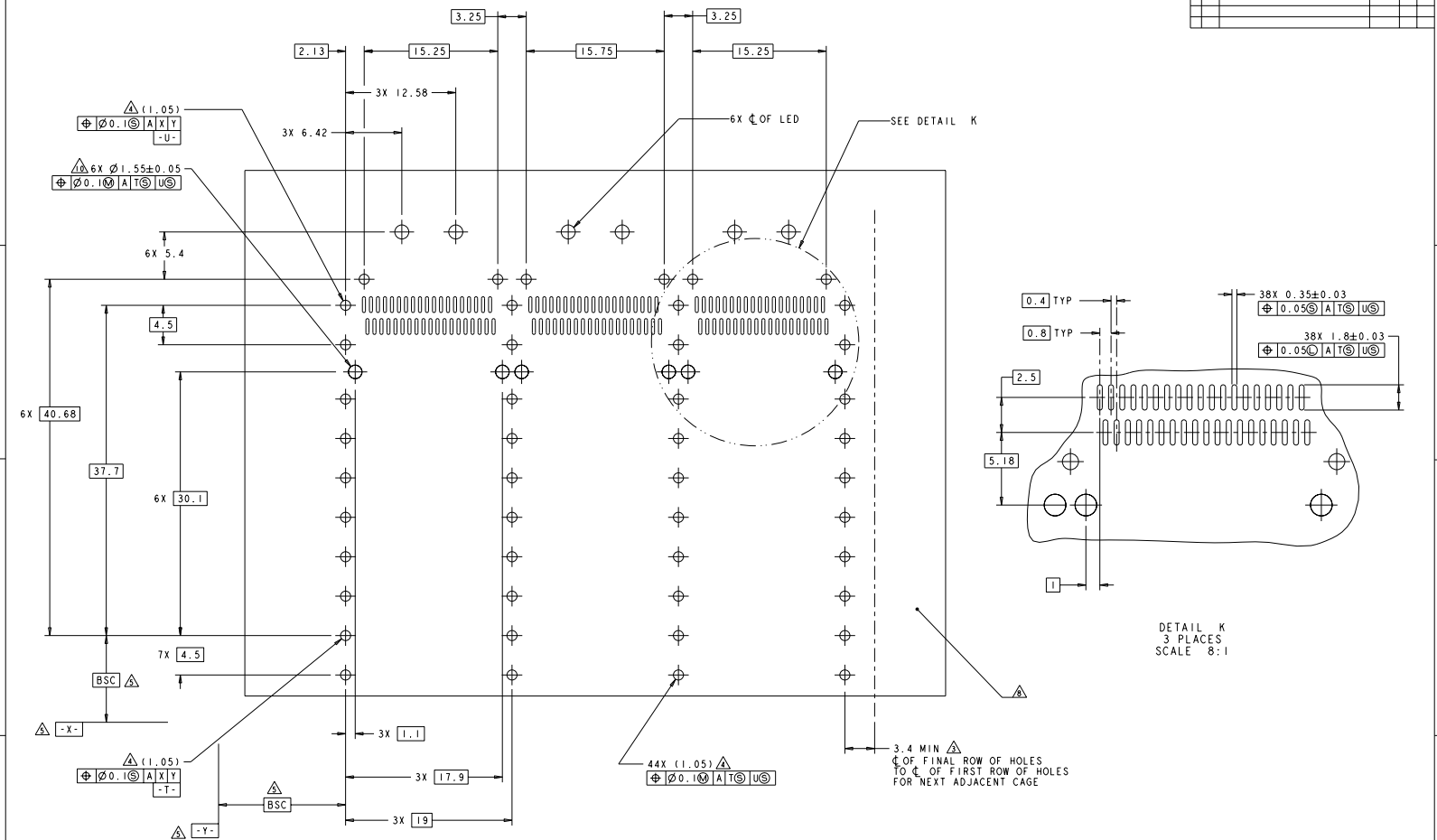
DATE	REV	DESCRIPTION	BY	CHK	APP
11-16-13	00	REVISED TO ADD DIMENSIONS FOR LIGHT PIPES AND HEAT SINKS.			

DATE	REV	DESCRIPTION	BY	CHK	APP
11-16-13	00	REVISED TO ADD DIMENSIONS FOR LIGHT PIPES AND HEAT SINKS.			

DATE	REV	DESCRIPTION	BY	CHK	APP
11-16-13	00	REVISED TO ADD DIMENSIONS FOR LIGHT PIPES AND HEAT SINKS.			

DATE	REV	DESCRIPTION	BY	CHK	APP
11-16-13	00	REVISED TO ADD DIMENSIONS FOR LIGHT PIPES AND HEAT SINKS.			

REV	DATE	DESCRIPTION	BY	CHK	APP
00		SEE SHEET 1			



RECOMMENDED PC BOARD LAYOUT
 BELLY TO BELLY CONFIGURATION
 SEE SHEET 4 FOR COMPONENT
 AND TRACE KEEP-OUTS
 SCALE 5:1

THIS PRODUCT HAS NOT COMPLETED VALIDATION/QUALIFICATION TESTING

DATE: 02/25/2015 TIME: 10:55 AM USER: J...		DATE: 02/25/2015 TIME: 10:55 AM USER: J...		DATE: 02/25/2015 TIME: 10:55 AM USER: J...	
PART: 100-2286 REV: 1 QTY: 1000	PART: 100-2286 REV: 1 QTY: 1000	PART: 100-2286 REV: 1 QTY: 1000	PART: 100-2286 REV: 1 QTY: 1000	PART: 100-2286 REV: 1 QTY: 1000	PART: 100-2286 REV: 1 QTY: 1000
CUSTOMER DRAWING: 100-2286-01			SCALE CODE: 2051042		