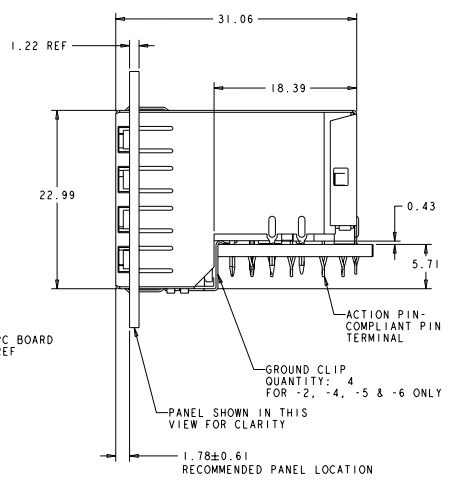
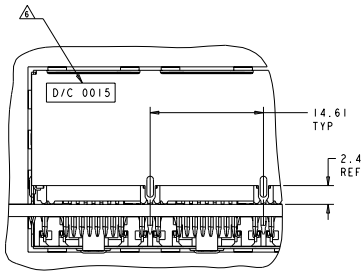


P/N 6368062-2 SHOWN

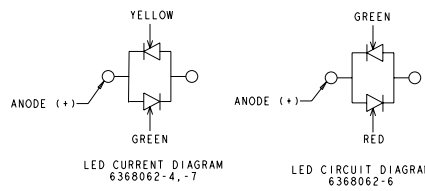


REV	DATE	DESCRIPTION	BY	CHK	APP
AA	22				
C4	ECR-12-003280		SPINNO	JJ	AC

- MATERIAL: HOUSING: PBT POLYESTER, BLACK, UL 94V-0. TERMINALS: 0.33 THICK PHOSPHOR BRONZE PLATED WITH 1.27µm MINIMUM THICK HARD GOLD IN LOCALIZED AREA AND 3.81µm MINIMUM THICK MATTE TIN IN ACTION PIN COMPLIANT PIN TERMINAL AREA OVER 1.27µm MINIMUM THICK NICKEL UNDERPLATE. SHIELD: 0.25 THICK COPPER ALLOY PLATED WITH 2.03µm MINIMUM BRIGHT TIN OVER 1.27µm MINIMUM NICKEL. LIGHT EMITTING DIODE (LED): DIFFUSED EPOXY LENS, 12.95 CARBON STEEL WIREFRAME LEADS PREPLATED WITH 8.89µm THICK Sn/Cu OVER 2.03µm THICK Ag OVER 1.02µm THICK Cu OVER 3.56µm THICK Ni OVER 1.02µm THICK Cu UNDERPLATE. LED ACTION PIN - COMPLIANT PIN CONTACTS: 0.3 THICK BRASS PLATED WITH 2.4µm BRIGHT TIN.
- JACK CAVITY CONFORMS TO FCC RULES AND REGULATIONS, PART 68 SUBPART F.
- ALL DIMENSIONS ARE NOMINAL UNLESS OTHERWISE SPECIFIED.
- DRILLED HOLE DIA = 1.02±.025. COPPER THICKNESS = 0.025-0.075. TIN LEAD THICKNESS = 0.008 MIN.
- DATUMS AND BASIC DIMENSIONS ESTABLISHED BY CUSTOMER.
- DATE CODE LOCATED ON REAR OF PART APPROXIMATELY AS SHOWN.
- CONTACTS ARE NOT INTENDED TO BE ALIGNED WITH EACH OTHER.
- SUGGESTED OPERATING CURRENT FOR LEDs IS 20 mA.
- TWO LEDs PER PORT, SIZE .079 X .118, SEE TABLE FOR COLOR.
- CLEAR 0.038 MIN THICK SURFACE PROTECTION TAPE APPLIED TO SHIELD SURFACE. FILM DOES NOT HAVE CUTOUPS IN EACH PORT. REMOVE TAPE PRIOR TO MATING A MODULAR PLUG TO THE JACK.
- MATERIAL: SHIELD: 0.25 THICK COPPER ALLOY PLATED WITH 1.27µm MINIMUM SATIN NICKEL.
- THE PART NUMBER 6368062-7 IS PRELIMINARY.
- ONLY FOR 6368062-8 CONTACT AREA LUBRICATED WITH BELLCORE APPROVED LUBRICANT TECHNICAL REFERENCE GR-1217-CORE ISSUE 1, NOVEMBER 1995.

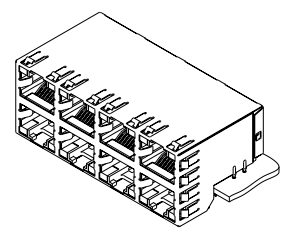


PARTIAL BACK VIEW

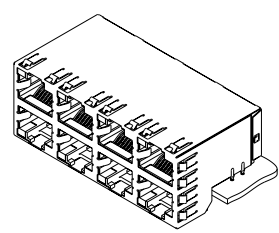


LED CURRENT DIAGRAM 6368062-4, -7

LED CIRCUIT DIAGRAM 6368062-6



P/N 6368062-1, -2, -3, -4, -5, -6, -8 AND 1'-6368062-6 SCALE 2:1



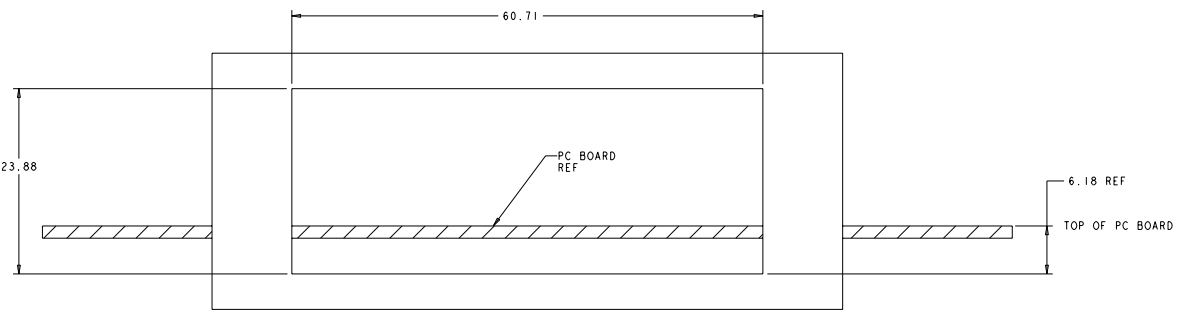
P/N 6368062-7 SCALE 2:1

REMARKS	LED #4 (LOWER-RIGHT)	LED #3 (UPPER-RIGHT)	LED #2 (UPPER-LEFT)	LED #1 (LOWER-LEFT)	DESCRIPTION	PART NUMBER
	GREEN	GREEN	GREEN	GREEN	WITHOUT GROUND CLIP	6368062-8
	YELLOW	YELLOW	GREEN	GREEN	WITHOUT GROUND CLIP	1-6368062-6
	-	N/A	GREEN/YELLOW	GREEN/YELLOW	WITHOUT GROUND CLIP	6368062-7
	RED/GREEN	RED/GREEN	RED/GREEN	RED/GREEN	WITH GROUND CLIP	6368062-6
	GREEN	GREEN	GREEN	GREEN	WITH GROUND CLIP	6368062-5
	GREEN/YELLOW	GREEN/YELLOW	GREEN/YELLOW	GREEN/YELLOW	WITH GROUND CLIP	6368062-4
	YELLOW	YELLOW	GREEN	GREEN	WITHOUT GROUND CLIP	6368062-3
	GREEN	GREEN	GREEN	GREEN	WITH GROUND CLIP	6368062-2
	GREEN	GREEN	GREEN	GREEN	WITHOUT GROUND CLIP	6368062-1

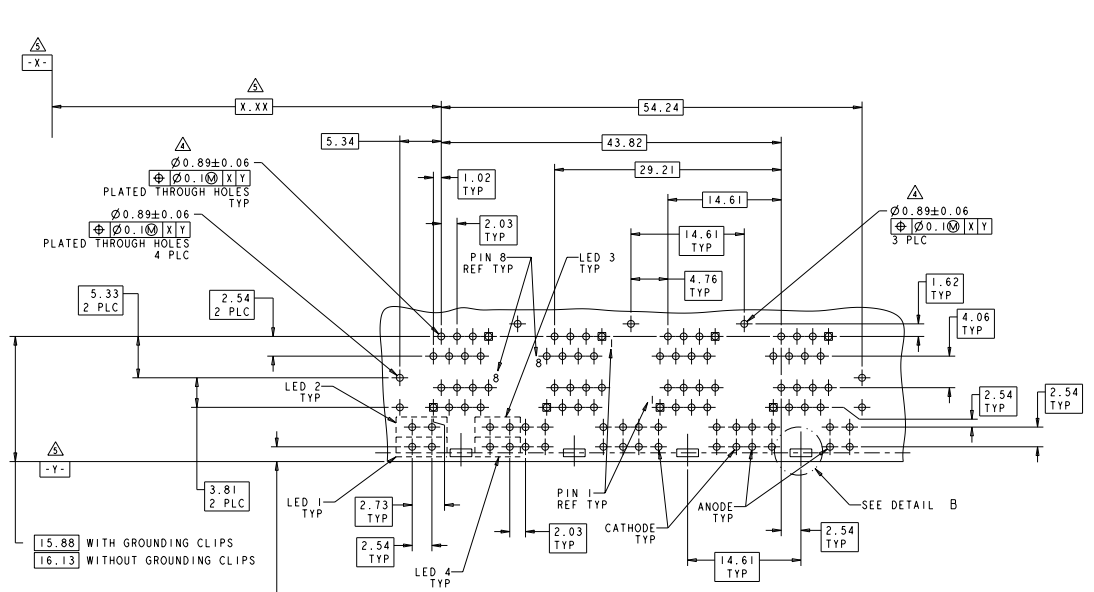
THIS DRAWING IS A CONTROLLED DOCUMENT. DATE: 12/22/05. DRAWN BY: J. WELSH. CHECKED BY: J. WELSH. APPROVED BY: J. WELSH. PART: 6368062-6. TITLE: STACKED MODULAR JACK ASSEMBLY, 2x4 OFFSET, WITH LEADS, 8 POSN, RJ45 SHIELDED, PANEL GROUND, CAT 5. MATERIAL: 158-1854. SIZE: 158-1854. SHEET: 1 OF 1. CUSTOMER DRAWING: A100779-6368062. SCALE: 2:1. SHEET: 1 OF 2. DATE: 12/22/05.

FILE NUMBER TO SUBMITTER		REVISIONS FOR PUBLICATION	
02	6368062-2	AA	ALL RIGHTS RESERVED

REVISIONS			
REV	DATE	DESCRIPTION	BY
AA	22	SEE SHEET 1	

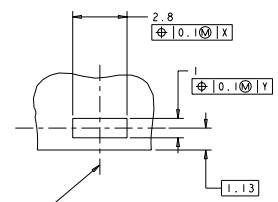


RECOMMENDED PANEL CUT-OUT



PARTS WITH GROUNDING CLIPS = 1.65
PARTS WITHOUT GROUNDING CLIPS = 1.91

PC BOARD LAYOUT
(COMPONENT SIDE)
LED #3, #4 NOT REQUIRED FOR 6368062-7



DETAIL B
PLATED PADS REQUIRED FOR 6368062-2, -4, -5 & -6
(PRODUCT WITH GROUNDING CLIPS)
SCALE 10:1
4 PLACES

THIS DRAWING IS A CONTROLLED DOCUMENT.		REV. NUMBER: 53PZ2005	 TE Connectivity
DRAWING TITLE: STACKED MODULAR JACK ASSEMBLY, 2x4 OFFSET, WITH LEADS, 8 POSN, RJ45 SHIELDED, PANEL GROUND, CAT 5		REV. DESCRIPTION: 53PZ2005	
DATE: 108-1854	DESIGNED BY: 134-2169	DATE: 108-1854	
APPROVED BY:	DATE:	DATE:	
CUSTOMER DRAWING		PART NUMBER: A1007790-6368062	DRAWN BY: 2