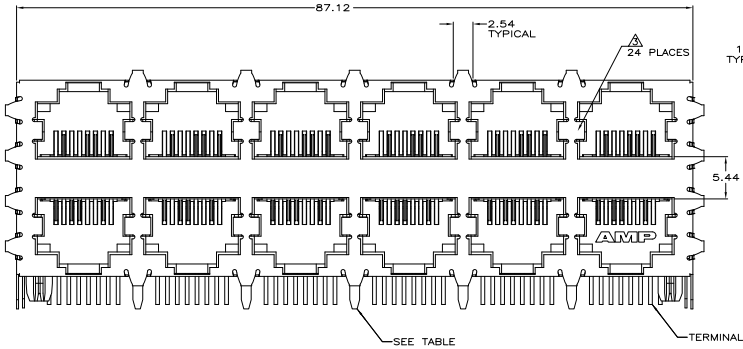
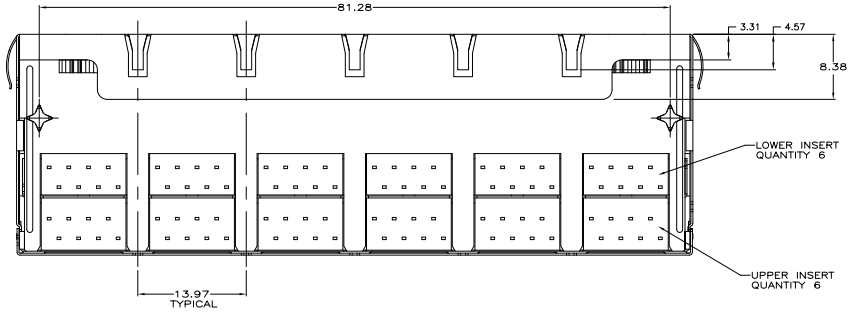


THIS DRAWING IS UNPUBLISHED
 ALL RIGHTS RESERVED

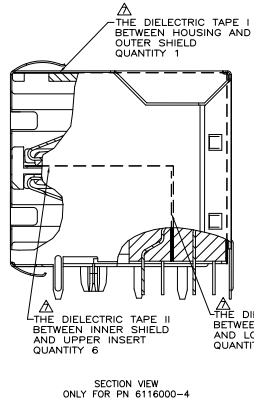
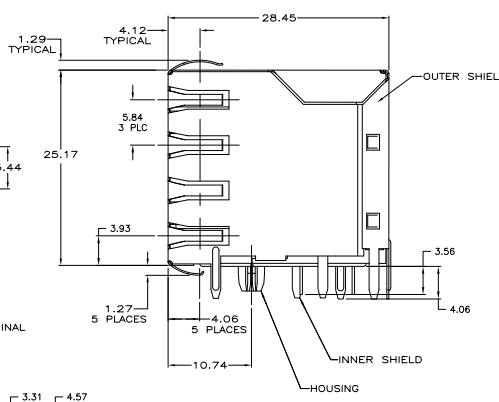
REV	DATE	DESCRIPTION	BY	APP'D
AA	22			
C	EDS-11-020728			190CT2011 JJ MQW



PN 6116000-2 & -3 SHOWN

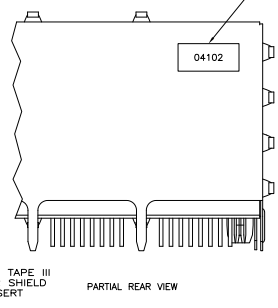


PN 6116000-1 & -4 SHOWN
 (WITH SHORT BOTTOM PANEL GROUND TABS AND 3 REAR TABS)



SECTION VIEW ONLY FOR PN 6116000-4

- △ MATERIAL: HOUSING - PCT POLYESTER, BLACK, UL 94V-0. OVERMOLDED TERMINAL ARRAY - PIST, BROWN. TERMINALS - 0.33 [.013] THICK PHOSPHOR BRONZE PLATED WITH 1.27µm [.000050] MIN THICK HARD GOLD IN LOCALIZED AREA AND 3.81µm [.000150] MIN THICK MATTE TIN IN SOLDER AREA OVER 1.27µm [.000050] MIN THICK NICKEL UNDERPLATE. OUTER SHIELD: 0.196 [.0077] THICK COPPER ALLOY PLATED 1.27µm [.000050] MIN NICKEL, PCB GROUND TABS DIPPED WITH 2.03µm [.000080] MIN TIN.
- △ JACK CAVITY CONFORMS TO FCC RULES AND REGULATIONS, PART 68 SUBPART F.
- △ INNER SHIELD TABS FINAL FORMED AND SIZED BY MATING WITH MODULAR PLUGS TO REDUCE INITIAL MATING INSERTION FORCE. APPLIES TO PN 6116000-1 & -4 ONLY.
- △ USE #30 DRILL BIT OR 3.25mm DRILL BIT WHEN PRODUCING THESE PCB HOLES.
- 5. ALL DIMENSIONS NOMINAL UNLESS OTHERWISE SPECIFIED.
- △ DATE CODE LOCATED ON REAR OF PART APPROX AS SHOWN: FIRST 2 DIGITS ARE LAST 2 DIGITS OF YEAR, SECOND 2 DIGITS ARE MANUFACTURING WORK WEEK, LAST DIGIT IS DAY OF WEEK, WITH SUNDAY=1.
- △ THE DIELECTRIC TAPES ARE ONLY FOR PN 6116000-4.
- △ THE PN 6116000-4 IS PRELIMINARY.
- △ DIELECTRIC WITHSTANDING VOLTAGE: 2250 VDC BETWEEN CONTACT AND SHIELD.
- △ WITH IMPROVED CONTACT, REDUCING CONFLICTS WITH PLUG.



PARTIAL REAR VIEW

NICKEL	A,C,E	3	△△△6116000-4
NICKEL	A,B,C,D,E	5	6116000-3
NICKEL	A,B,C,D,E	5	6116000-2
NICKEL	A,C,E	3	△△△6116000-1

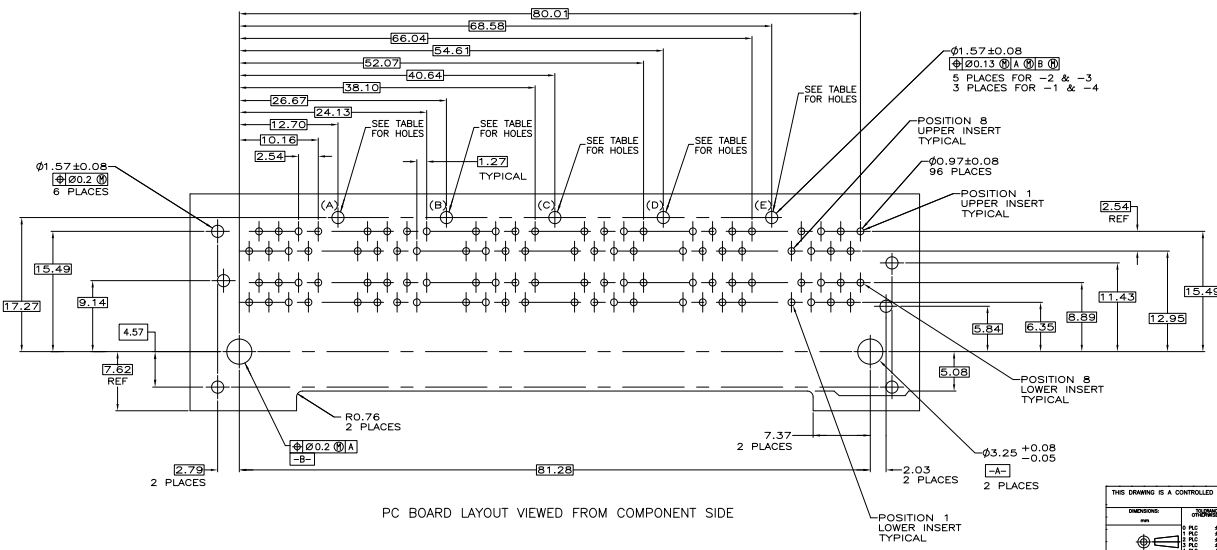
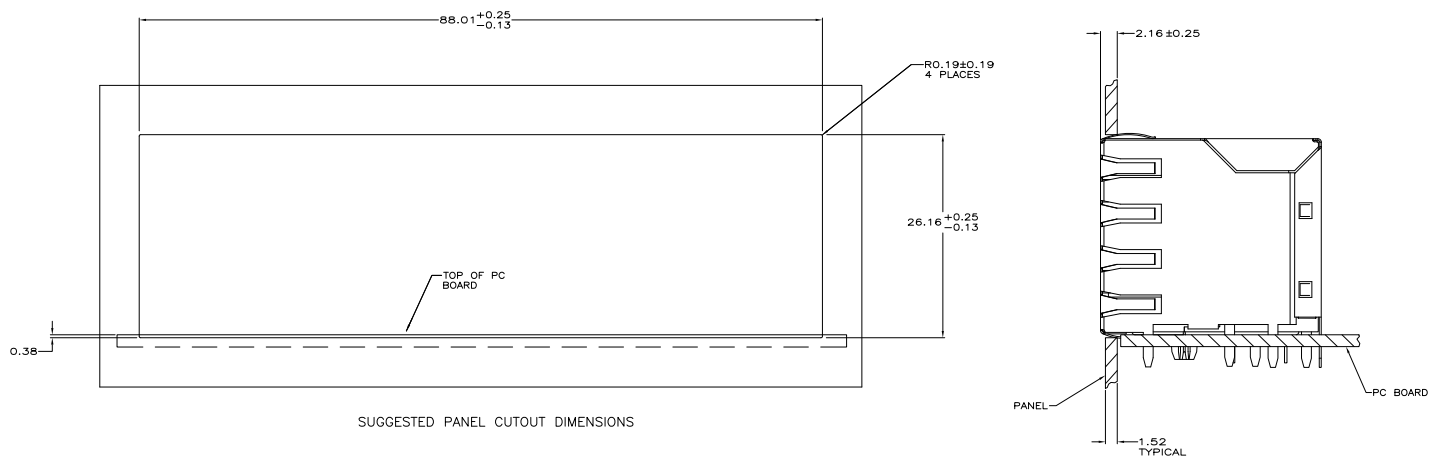
SHIELD PLATING	HOLES USED	NO. OF REAR TABS	PART NUMBER
△			

DESIGNER	APPROVED	DATE	REV

REV	DATE	DESCRIPTION	BY	APP'D
1				

THIS DRAWING IS UNPUBLISHED
 ALL RIGHTS RESERVED

REV	DATE	DESCRIPTION	BY	APP
AA	22			
		SEE SHEET 1		



THIS DRAWING IS A CONTROLLED DOCUMENT.		DRAWN BY: J. VARELA - JORDAN CHECKED BY: G. WILSON DATE: 10/20/11		TE Connectivity STACKED MODULAR JACK ASSEMBLY, 2x6 PORT, RJ45, SHIELDED, WAVE PANEL, GROUNDED, CAT 5/GIGABIT ETHERNET	
DIMENSIONS: mm UNLESS OTHERWISE SPECIFIED	TOLERANCES: mm FRACTIONAL DECIMALS DECIMALS ANGLES HOLE POSITIONING	DRAWING NO: 108-1163-2 REV: 114-2048 DATE: 10/20/11	PART NO: 100779 QTY: 6116000	SHEET: 4.1 OF: 2	REVISIONS: 1 DATE: 10/20/11