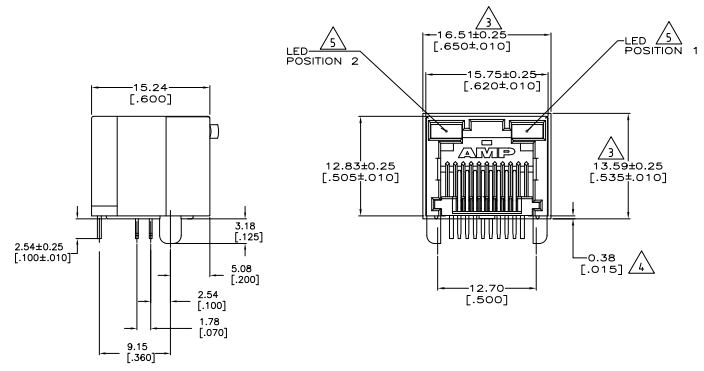


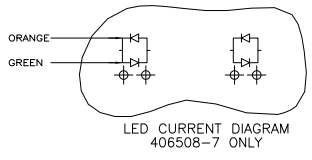
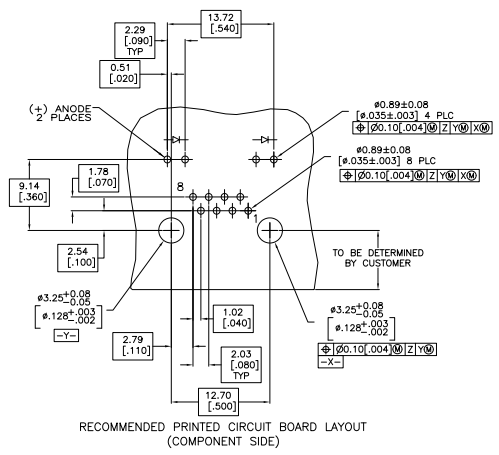
THIS DRAWING IS UNPUBLISHED. ALL RIGHTS RESERVED.
 © 2008 Tyco Electronics Corporation. ALL RIGHTS RESERVED.

REV	DATE	DESCRIPTION	BY	CHK
AA	00			
C	02-07-2013		03NOV07	LAM JW
C1	REVISED PER ECU-09-021510		11SEP08	KK AEG



- MATERIAL:
 HOUSING - HIGH TEMPERATURE THERMOPLASTIC, BLACK, UL94V-0.
 TERMINALS - 0.36[.014] THICK PHOS BRONZE PLATED WITH 3.81µm[.000150] MINIMUM THICK BRIGHT TIN LEAD IN LOCALIZED PLATE AREA. ENTIRE TERMINAL PLATED WITH 1.27µm [0.00050] MINIMUM THICK NICKEL.
 LIGHT EMITTING DIODE (LED) - DIFFUSED EPOXY LENS, 0.51 x 0.51 [0.020 x 0.020] CARBON STEEL WIREFRAME LEADS PLATED WITH 8.89µm[.000350] TIN/COPPER OVER 2.03µm[.000080] SILVER OVER 1.02µm[.000040] NICKEL UNDERPLATE OVER 2.03µm[.000080] COPPER UNDERPLATE.
 - JACK CAVITY CONFORMS TO FCC RULES AND REGULATIONS PART 68, SUBPART F.
- ▲ SUGGESTED PANEL OPENING DIMENSIONS.
- ▲ SUGGESTED CLEARANCE BETWEEN BOTTOM OF CONNECTOR AND BOTTOM PANEL OPENING.
- ▲ SEE TABLE FOR COLOR OF LEDS AND NUMBER REQUIRED.
- THIS MODULAR JACK WITH INTEGRATED LED IS NOT IR REFLOW SOLDERING PROCESS COMPATIBLE.
- ▲ OBSOLETE PARTS: OBSOLETE CIS STREAMLINING PER D.RENAUD/D.SINISI

-Z-



INDICATOR COLOR	POSITION 2	POSITION 1	PART NUMBER
▲ OBSOLETE	ORANGE/GREEN	ORANGE/GREEN	406508-7
	YELLOW	YELLOW	406508-6
	GREEN	GREEN	406508-5
▲ SUPERSEDED	GREEN	YELLOW	406508-4
	YELLOW	-	406508-3
▲ OBSOLETE	-	GREEN	406508-2
	YELLOW	GREEN	406508-1

THIS DRAWING IS A CONTROLLED DOCUMENT.		REV	DATE	BY	CHK	DESCRIPTION
1	108-1163-4	114-2154	11-21-15	A1	00779	406508

INCHES	MILLIMETERS	UNITS	SCALE	DATE	BY	CHK	DESCRIPTION
1/16	1.588	INCHES	1:1	11-21-15	A1	00779	406508

REV	DATE	BY	CHK	DESCRIPTION
1	11-21-15	A1	00779	406508