

4

3

2

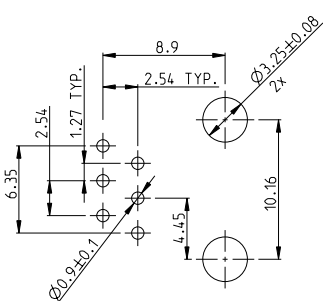
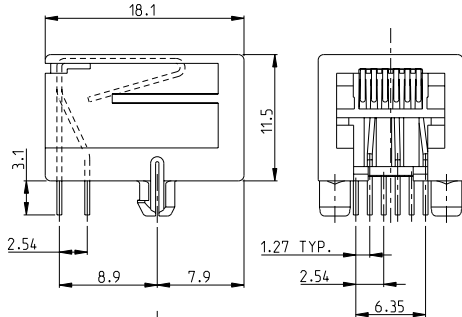
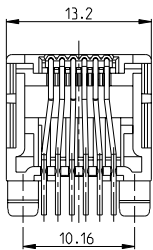
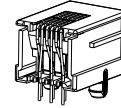
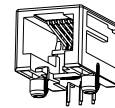
1

THIS DRAWING IS UNPUBLISHED. RELEASED FOR PUBLICATION 2000  
 ALL RIGHTS RESERVED. COPYRIGHT 2000

- 1 SEE SHEET 2 FOR MODULAR JACK 6 POS./4 CONTACTS
- 2 FOR APPLICATION INFORMATION SEE SPEC. 114-19019.
- 3 FOR PERFORMANCE REQUIREMENTS SEE SPEC. 108-19064.
- 4 TOLERANCES UNLESS OTHERWISE SPECIFIED: ± 0.15mm.

△ TRUE POSITIONING WILL NOT BE GUARANTEED USING THIS PACKAGING TYPE.

REV	LYR	DESCRIPTION	DATE	BY	APPV
AA	ECR-10-020218		28DEC2010	PS	RRP
AA1	ECR-10-026537		08AUG11	KK	HMR



PRINTED CIRCUIT BOARD LAYOUT (6 POS./6 CONTACTS)

[VIEW SHOWN IS CIRCUIT (NON-COMPONENT) SIDE OF BOARD]  
 PRINTED CIRCUIT BOARD THICKNESS: 1.6mm NOMINAL.  
 TOLERANCES UNLESS OTHERWISE SPECIFIED: ± 0.05

PACKAGING	REMARKS	FINISH	MATERIAL	P/N
TAPE MOUNTED 800 PCS/REEL			HOUSING COLOR BLACK	2-215876-3
BULK PACKED 1000 PCS IN A BOX △			HOUSING AND CONTACT INSERT: UL 94-V0	2-215876-1
240 PIECES IN A TRAY	6 POS./ 6 CONTACTS	OVERALL: Ni 1.27 µm MIN. ALL OVER THE CONTACTS	HOUSING PA 4.6 CONTACT INSERT: PCT	OBsolete 2-215876-0
BULK PACKED 1000 PCS IN A BOX △		SOLDER ZONE: Sn 2.5 µm MIN. ON THE SOLDER ZONE OF THE CONTACT	CONTACTS: PH-BRONZE	3-215876-1
240 PIECES IN A TRAY		MATING ZONE: PLATING CONFIRMS TO PRODUCT REQUIREMENTS AS PER SPECIFICATION 108-19064	HOUSING COLOR BLACK PBT, UL 94 V-0	1-215876-3
100 PCS IN A MULTI-TUBE	SUPERSEDED BY 1-215876-3		CONTACT INSERT: PBT, UL 94 V-0	1-215876-1
TAPE MOUNTED 800 PCS/REEL	6 POS./ 6 CONTACTS		CONTACTS: PH-BRONZE	215876-1

THIS DRAWING IS A CONTROLLED DOCUMENT. DATE: 24 SEP 96  
 BY: G. CONSTANT  
 CHECKED BY: G. CONSTANT  
 DATE: 24 SEP 96

TE Connectivity

MODULAR JACK, SIDE ENTRY, 6/6  
 FOR PRINTED CIRCUIT BOARD

8 SHEETS  
 PRODUCT SPEC: 108-19064  
 APPLICATION SPEC: 114-19019

SIZE: A2  
 CAGE CODE: -  
 DRAWING NO: -  
 ©=215876

RESTRICTED TO: -  
 CUSTOMER DRAWING  
 SCALE: 4:1 SHEET 1 OF 8 REF: AA1

4

3

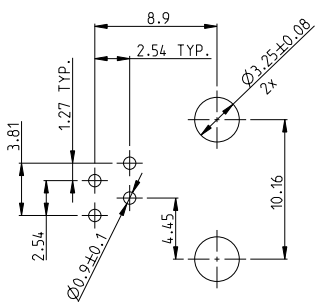
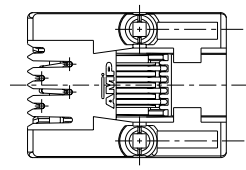
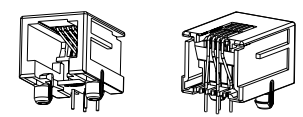
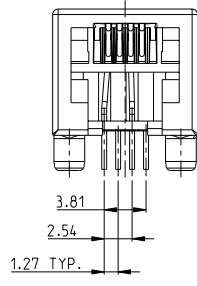
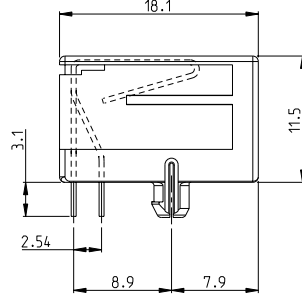
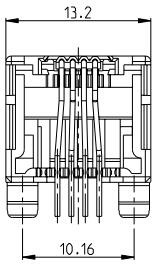
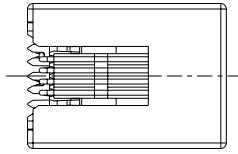
2

1

THIS DRAWING IS UNPUBLISHED. RELEASED FOR PUBLICATION 2000  
 ALL RIGHTS RESERVED. COPYRIGHT 2000

REVISONS		DATE	BY	APPROV
P	LYR			
-	SEE SHEET 1	-	-	-

- 1 SEE SHEET 1 FOR MODULAR JACK 6 POS./6 CONTACTS.
- 2 FOR APPLICATION INFORMATION SEE SPEC. 114-19019.
- 3 FOR PERFORMANCE REQUIREMENT SEE SPEC. 108-19064.
- 4 TOLERANCES UNLESS OTHERWISE SPECIFIED: ±0.15.



PRINTED CIRCUIT BOARD LAYOUT (6 POS./4 CONTACT)  
 (VIEW SHOWN IS CIRCUIT (NON-COMPONENT) SIDE OF BOARD)  
 PRINTED CIRCUIT BOARD THICKNESS: 1.6mm NOMINAL.  
 TOLERANCES UNLESS OTHERWISE SPECIFIED: ± 0.05.

TAPE MOUNTED 800 PCS/REEL	6 POS./ 4 CONTACTS	OVERALL: Ni 1.27 µm MIN. ALL OVER THE CONTACTS  SOLDER ZONE: Sn 2.5 µm MIN. ON THE SOLDER ZONE OF THE CONTACT  MATING ZONE: PLATING CONFIRMS TO PRODUCT REQUIREMENTS AS PER SPECIFICATION 108-19064	HOUSING COLOR BLACK: PBT, UL 94 V-0  CONTACT INSERT: PBT, UL 94 V-0  CONTACTS: Ph-BRONZE	215876-2
PACKAGING	REMARKS	FINISH	MATERIAL	P/N
	SUPERSEDED BY 215876-2			1-215876-2
THIS DRAWING IS A CONTROLLED DOCUMENT. DATE: 24 SEP 96		TE Connectivity		
DIMENSIONS: mm		MODULAR JACK, SIDE ENTRY, 6/4 FOR PRINTED CIRCUIT BOARD		
MATERIAL		RESTRICTED TO		
CUSTOMER DRAWING		SCALE 4:1 SHEET 2 OF 4 REF AA1		

4

3

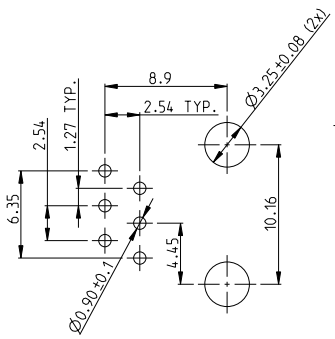
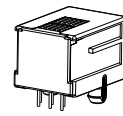
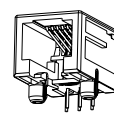
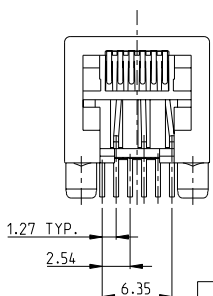
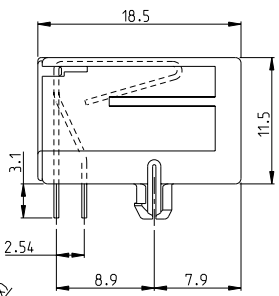
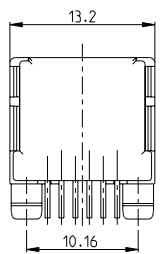
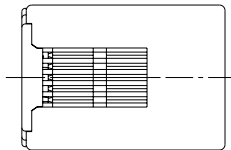
2

1

THIS DRAWING IS UNPUBLISHED. RELEASED FOR PUBLICATION 2000  
 ALL RIGHTS RESERVED. COPYRIGHT 2000

REV	DATE	BY	APPV
-	-	-	-
-	-	-	-
-	-	-	-

- SEE SHEET 4 FOR MODULAR JACK 6 POS./4 CONTACTS WITH CONTACT COVER.
  - FOR APPLICATION INFORMATION SEE SPEC. 114-19019.
  - FOR PERFORMANCE REQUIREMENTS SEE SPEC. 108-19064.
  - TOLERANCES UNLESS OTHERWISE SPECIFIED:  $\pm 0.15\text{mm}$ .
- $\triangle$  TRUE POSITIONING WILL NOT BE GUARANTEED USING THIS PACKAGING TYPE.



PRINTED CIRCUIT BOARD LAYOUT (6 POS./6 CONTACTS)

[VIEW SHOWN IS CIRCUIT (NON-COMPONENT) SIDE OF BOARD]  
 PRINTED CIRCUIT BOARD THICKNESS: 1.6mm NOMINAL.  
 TOLERANCES UNLESS OTHERWISE SPECIFIED:  $\pm 0.05$

OBSOLETE  
 OBSOLETE  
 OBSOLETE

PACKAGING	REMARKS	FINISH	MATERIAL	P/N
BULK PACKED 1000 PCS IN A BOX			HOUSING COLOR: BLACK PBT, UL94 V-0	5-215876-4
240 PIECES IN A TRAY	6 POS./6 CONTACTS	IN CONTACT AREA: 1.2 $\mu\text{m}$ MIN. SEL. GOLD OVER 1.2 $\mu\text{m}$ MIN. NICKEL	CONTACT INSERT: PBT, UL94 V-0	5-215876-3
TAPE MOUNTED 800 PCS/REEL		SOLDER TINES: 2.5 $\mu\text{m}$ MIN. TIN OVER 1.2 $\mu\text{m}$ MIN. NICKEL	CONTACT COVER: PBT, UL94 V-0	5-215876-1

THIS DRAWING IS A CONTROLLED DOCUMENT.

DESIGNED BY: J. Willems	DATE: 10-OCT-05	
DESIGNED BY: J. Willems	DATE: 10-OCT-05	
DESIGNED BY: J. Broeksteeg	DATE: 10-OCT-05	<b>TE Connectivity</b> MODULAR JACK, SIDE ENTRY, 6/6 FOR PRINTED CIRCUIT BOARD WITH CONTACT COVER
DESIGNED BY: J. Broeksteeg	DATE: 10-OCT-05	

APPLICATION SPEC: 114-19019

SIZE: A2 CAGE CODE: 215876 DRAWING NO: 215876 RESTRICTED TO: AA1

CUSTOMER DRAWING SCALE: 4:1 SHEET 3 OF 4

4

3

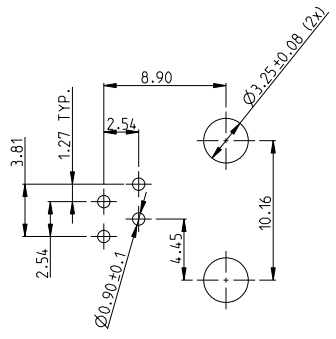
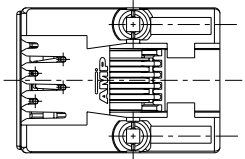
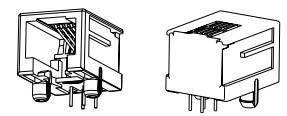
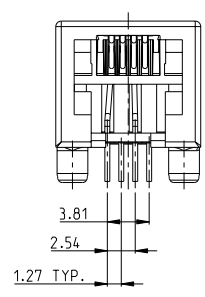
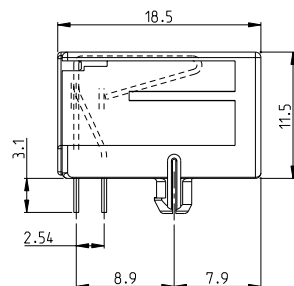
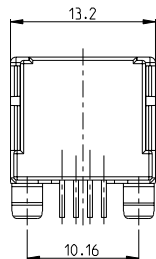
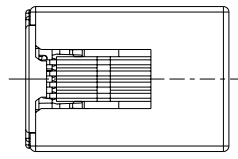
2

1

THIS DRAWING IS UNPUBLISHED. RELEASED FOR PUBLICATION. 2000  
 ALL RIGHTS RESERVED. COPYRIGHT 2000

REVISONS		DATE	BY	APPROV
P	LYA			
-	SEE SHEET 1	-	-	-

- 1 SEE SHEET 3 FOR MODULAR JACK 6 POS./6 CONTACTS WITH CONTACT COVER.
- 2 FOR APPLICATION INFORMATION SEE SPEC. 114-19019.
- 3 FOR PERFORMANCE REQUIREMENT SEE SPEC. 108-19064.
- 4 TOLERANCES UNLESS OTHERWISE SPECIFIED: ±0.15.



PRINTED CIRCUIT BOARD LAYOUT (6 POS./4 CONTACT)

(VIEW SHOWN IS CIRCUIT (NON-COMPONENT) SIDE OF BOARD)  
 PRINTED CIRCUIT BOARD THICKNESS: 1.6mm NOMINAL.  
 TOLERANCES UNLESS OTHERWISE SPECIFIED: ± 0.05.

OBSELETE

TAPE MOUNTED 800 PCS/REEL	6 POS./ 4 CONTACTS	IN CONTACT AREA: 1.2 µm MIN. SEL. GOLD OVER 1.2 µm MIN. NICKEL	HOUSING COLOR BLACK PBT, UL94 V-0 CONTACT INSERT: PBT, UL94 V-0	5-215876-2
PACKAGING	REMARKS	FINISH	MATERIAL	P/N
THIS DRAWING IS A CONTROLLED DOCUMENT. DWG: P.W. Willems 10-OCT-05 CD: P.W. Willems 10-OCT-05 NAME: J. Broeksteeg 10-OCT-05 PRODUCT SPEC: 108-19064 APPLICATION SPEC: 114-19019 WEIGHT: - CUSTOMER DRAWING				
DIMENSIONS: mm		TE Connectivity		RESTRICTED TO
MATERIAL: -		MODULAR JACK, SIDE ENTRY, 6/4 FOR PRINTED CIRCUIT BOARD WITH CONTACT COVER		SCALE: 4:1 SHEET 4 OF 4 REF: AA1