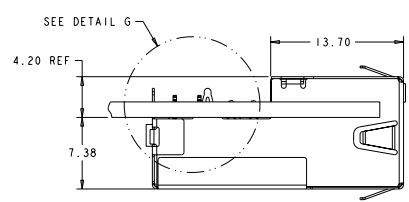
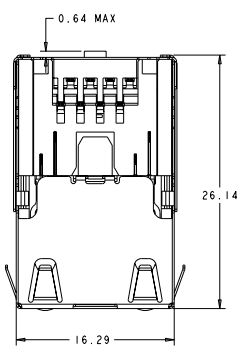
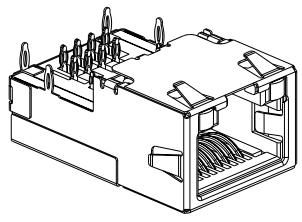
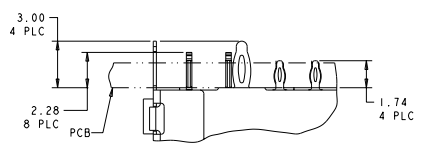
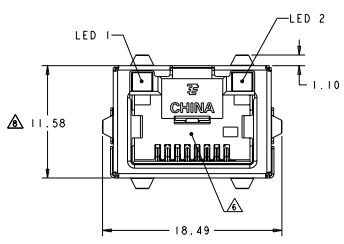


REV	DATE	DESCRIPTION	BY	CHK	APP
B5	ECR-11-008822		11082011	JJ	MDR
C	ECR-12-002445		09082012	JJ	AC

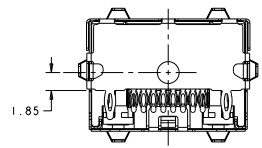
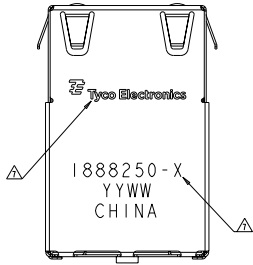


VIEW SHOWN ASSEMBLED TO PCB ONLY



DETAIL G
SCALE 8:1

- MATERIALS:**
 HOUSING: BLACK THERMOPLASTIC, 94V-0.
 SHIELD: COPPER ALLOY WITH 0.76µm MIN NICKEL PLATE
 CONTACTS: PHOSPHOR BRONZE WITH 1.27µm MIN GOLD AT MATING INTERFACE OVER 1.27µm MIN NICKEL UNDERPLATE.
- PERFORMANCE:**
 INSERTION LOSS: 0.4dB @ 100 MHz.
 RETURN LOSS: 12.0dB @ 100 MHz.
 CROSSTALK ATTENUATION: -43dB MINIMUM @ 100 MHz
 CURRENT: 0.6 AMPERE MAXIMUM PER SINGAL CONTACT.
- LED'S COMPLIANT WITH IEC60825-1 SAFETY OF LASER PRODUCTS WHEN OPERATED AT CURRENT OF 20mA.
- ALL DIMENSIONS NOMINAL.
- RECOMMENDED MOTHERBOARD PCB THICKNESS: 1.60±0.16.
- RJ45 PORT CONFORMS TO FCC RULES AND REGULATIONS PART 68 SUB-PART F.
- TE LOGO, PART NUMBER, DATE CODE AND COUNTRY OF ORIGIN TO BE MARKED IN APPROXIMATE LOCATION SHOWN.
- THIS DIMENSION MEETS THE ADVANCED MEZZANINE CARD (AMC) SPECIFICATION.
- PIN 9, 10, 11, 12 ARE LED LEAD PINS. For 1888250-3, NO LED INTEGRATED, HOLES ON PCB FOR THESE PINS ARE ONLY OPTIONAL.



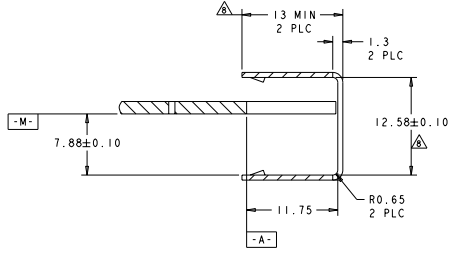
LED #1	LED #2	PART NUMBER
YELLOW	GREEN	1888250-5
GREEN	GREEN	1888250-4
		1888250-3
GRN/YEL	GRN/YEL	1888250-2
GREEN	YELLOW	1888250-1

THIS DRAWING IS A CONTROLLED DOCUMENT.

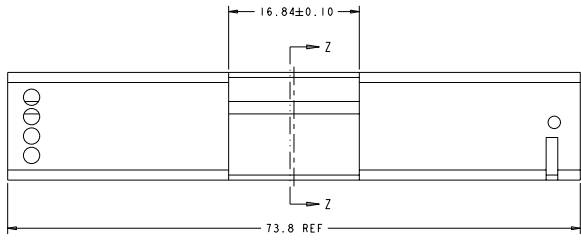
REV	DATE	DESCRIPTION	BY	CHK	APP
AA	00				

TE Connectivity
CONNECTOR ASSEMBLY, LOW PROFILE, PRESS FIT, MODULAR JACK, 1X1, RJ45
 PART NUMBER: 1888250-1
 DATE CODE (starting w/): 100779
 CUSTOMER DRAWING: 1888250

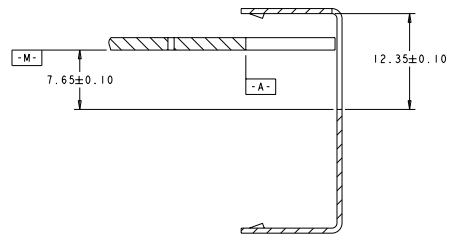
REV. NO.		REVISIONS	
DATE	BY	DESCRIPTION	DATE
00	AA	SEE SHEET 1	



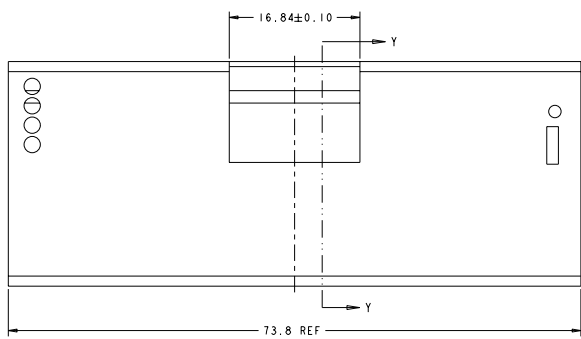
SECTION Z-Z



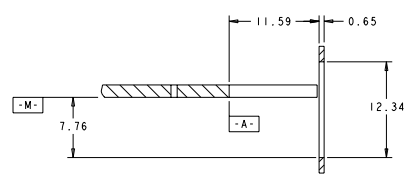
AMC SINGLE WIDTH, HALF HEIGHT MODULE FACE PLATE
SCALE 4:1



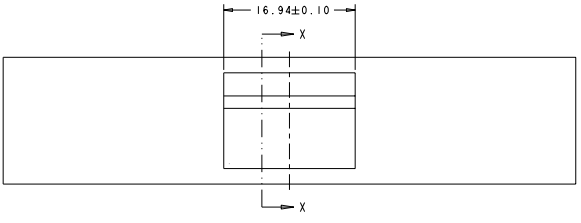
SECTION Y-Y



AMC SINGLE WIDTH, FULL HEIGHT MODULE FACE PLATE
SCALE 4:1



SECTION X-X



STANDARD FACE PLATE
SCALE 4:1

THIS DRAWING IS A CONTROLLED DOCUMENT.		SERIAL NO. 0000000000 DATE 01/11/2008 BY 0000000000 CHECKED BY 0000000000 APPROVED BY 0000000000 DRAWING NO. 188-2214 REVISION NO. 0000000000 WEIGHT 0.0000 MATERIAL 0000000000 PART NO. 0000000000 CUSTOMER DRAWING	SERIAL NO. 0000000000 DATE 01/11/2008 BY 0000000000 CHECKED BY 0000000000 APPROVED BY 0000000000 DRAWING NO. 188-2214 REVISION NO. 0000000000 WEIGHT 0.0000 MATERIAL 0000000000 PART NO. 0000000000 CUSTOMER DRAWING	SERIAL NO. 0000000000 DATE 01/11/2008 BY 0000000000 CHECKED BY 0000000000 APPROVED BY 0000000000 DRAWING NO. 188-2214 REVISION NO. 0000000000 WEIGHT 0.0000 MATERIAL 0000000000 PART NO. 0000000000 CUSTOMER DRAWING	SERIAL NO. 0000000000 DATE 01/11/2008 BY 0000000000 CHECKED BY 0000000000 APPROVED BY 0000000000 DRAWING NO. 188-2214 REVISION NO. 0000000000 WEIGHT 0.0000 MATERIAL 0000000000 PART NO. 0000000000 CUSTOMER DRAWING
--	--	--	--	--	--

TE Connectivity
 CONNECTOR ASSEMBLY, LOW PROFILE,
 PRESS FIT, MODULAR JACK, 1X1, RJ45
 SIZE SCALE CODE DRAWING NO. PART NUMBER TO
 A 00779 1888250
 SHEET 5 OF 3