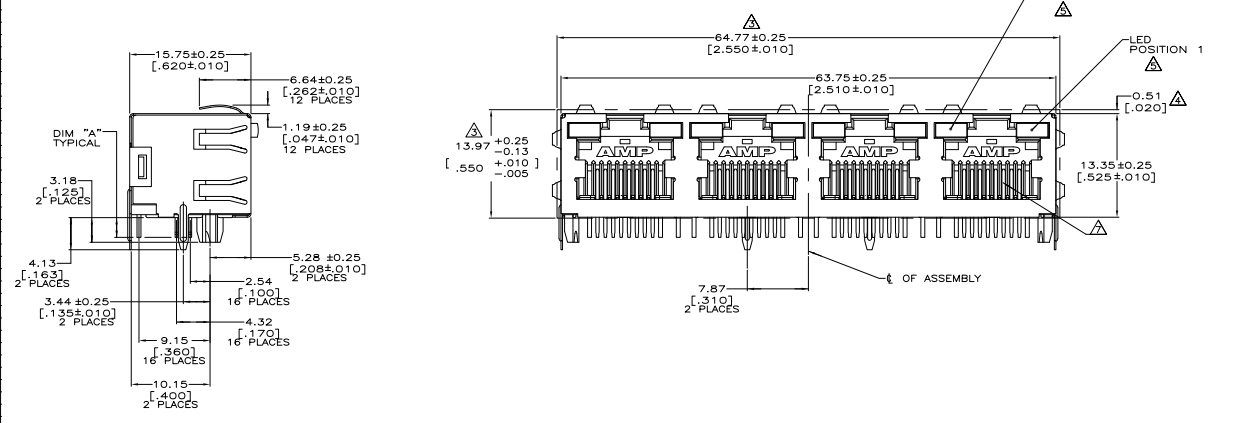
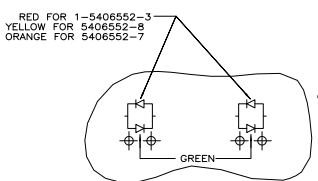


THIS DRAWING IS UNPUBLISHED  
 ALL RIGHTS RESERVED

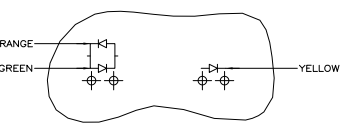
| REV | DATE | DESCRIPTION               | BY | CHK | APP              |
|-----|------|---------------------------|----|-----|------------------|
| AA  | 00   | REVISED PER EDR-11-004564 |    |     |                  |
| E1  |      |                           |    |     | 11MAR2011 DZ MQW |



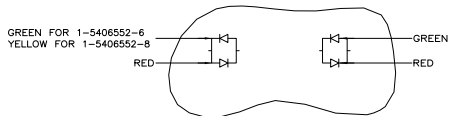
- MATERIAL:  
 HOUSING - HIGH TEMPERATURE THERMOPLASTIC, BLACK, UL94V-0.  
 TERMINALS - 0.36[.014] THICK PHOS BRONZE PLATED WITH 3.81µm[.000150] MINIMUM THICK MATTE TIN IN SOLDER AREA, 1.27µm[.000050] MINIMUM GOLD IN LOCALIZED PLATE AREA. ENTIRE TERMINAL PLATED WITH 1.27µm[.000050] MINIMUM THICK NICKEL.  
 SHIELD - 0.19µ[.007] THICK COPPER ZINC ALLOY PREPLATED WITH 1.27µm[.000050] MINIMUM SATIN NICKEL WITH 2.03µm[.000080] MINIMUM TIN POST DIPPED ON PCB GROUND TABS.  
 LIGHT EMITTING DIODE (LED) - DIFFUSED EPOXY LENS, 0.51 x 0.51[.020 x .020] CARBON STEEL WIREFRAME LEADS PREPLATED WITH 8.89 µm THICK Sn/Cu OVER 2.03 µm THICK Ag OVER 1.02 µm THICK Cu OVER 3.56 µm THICK Ni OVER 1.02 µm THICK Cu UNDERPLATE.
  - JACK CAVITY CONFORMS TO FCC RULES AND REGULATIONS PART 68, SUBPART F.
- ▲ SUGGESTED PANEL OPENING DIMENSIONS.  
 ▲ SUGGESTED CLEARANCE BETWEEN TOP OF CONNECTOR AND TOP PANEL OPENING.  
 ▲ SEE TABLE FOR COLOR OF LEDS AND NUMBER REQUIRED.  
 6. THIS MODULAR JACK WITH INTEGRATED LED IS NOT IR REFLOW SOLDERING PROCESS COMPATIBLE.  
 ▲ CONTACT AREA LUBRICATED WITH BELLOCO APPROVED LUBRICANT, TECHNICAL REFERENCE GR-1217-CORE, ISSUE 1, NOVEMBER 1995. ONLY FOR 1-5406552-7  
 ▲ THE PART IS PRELIMINARY  
 ▲ OBSOLETE PARTS: OBSOLETE CIS STREAMLINING PER D.RENAUD/D.SINISI



BI-COLOR LED CURRENT DIAGRAM



LED CURRENT DIAGRAM  
5406552-9 ONLY



BICOLOR LED CURRENT DIAGRAM

|                    |                      |                                  |             |
|--------------------|----------------------|----------------------------------|-------------|
| .146               | RED/GREEN            | RED/GREEN                        | 1-5406552-9 |
| .100               | RED/YELLOW           | RED/GREEN                        | 1-5406552-8 |
| .100               | GREEN                | -                                | 1-5406552-7 |
| .126               | RED/GREEN            | RED/GREEN                        | 1-5406552-6 |
| .100               | SEE VIEW A (SHEET 2) | SEE VIEW A (SHEET 2)             | 1-5406552-5 |
| .100               | RED                  | GREEN                            | 1-5406552-4 |
| .100               | GREEN/RED            | GREEN/RED                        | 1-5406552-3 |
| .120               | YELLOW               | GREEN                            | 1-5406552-1 |
| .100               | GREEN/ORANGE         | YELLOW                           | 5406552-9   |
| .100               | GREEN/YELLOW         | GREEN/YELLOW                     | 5406552-8   |
| .100               | GREEN/ORANGE         | GREEN/ORANGE                     | 5406552-7   |
| ▲ OBSOLETE         | .100                 | YELLOW                           | 5406552-6   |
| .100               | GREEN                | GREEN                            | 5406552-5   |
| .100               | GREEN                | YELLOW                           | 5406552-4   |
| ▲ OBSOLETE         | .100                 | YELLOW                           | 5406552-3   |
| .100               | YELLOW               | GREEN                            | 5406552-2   |
| .100               | YELLOW               | GREEN                            | 5406552-1   |
| DIM A              |                      | POSITION 2                       | POSITION 1  |
| SOLDER TAIL LENGTH |                      | INDICATOR COLOR FOR EACH HOUSING |             |
|                    |                      | PART NUMBER                      |             |

THIS DRAWING IS A CONTROLLED DOCUMENT

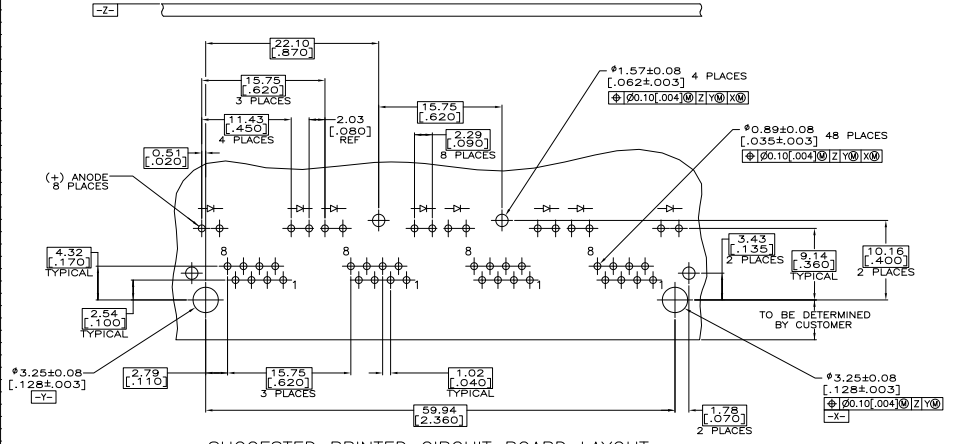
INVENTOR: [Signature]  
 DESIGNER: [Signature]  
 CHECKED: [Signature]  
 DATE: 108-1163-4  
 REVISED: 114-2154  
 CUSTOMER DRAWING: [Signature]

TE Connectivity  
 INVERTED MODULAR JACK ASSEMBLY,  
 1X4, SHELDED,  
 PANEL GROUND, WITH LED

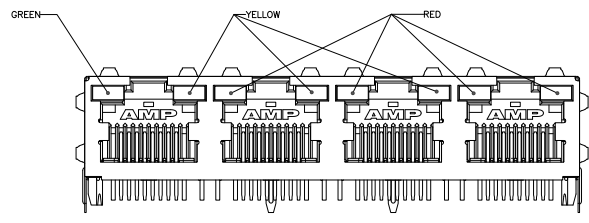
SEE NOTE 1  
 SEE NOTE 1  
 SEE NOTE 1

THIS DRAWING IS UNPUBLISHED  
 ALL RIGHTS RESERVED

| REV | DATE | DESCRIPTION | BY | APP |
|-----|------|-------------|----|-----|
| AA  | 00   | SEE SHEET 1 | -  | -   |



SUGGESTED PRINTED CIRCUIT BOARD LAYOUT  
 (COMPONENT SIDE)



VIEW A  
 (1-5406552-5 ONLY)

|   |   |  |  |
|---|---|--|--|
| THIS DRAWING IS A CONTROLLED DOCUMENT.  |   | 100% SHIPMENT (A, B, C, D, E)<br>BY WESTMAN<br>DATE 11/14/03 | <b>TE Connectivity</b><br>INVERTED MODULAR JACK ASSEMBLY,<br>1X4, SHIELDED,<br>PANEL GROUNDING, WITH LED |
| DIMENSIONS: mm<br>UNLESS OTHERWISE SPECIFIED<br>DEC: ±.005 (0.2)<br>FRA: ±.0005 (0.0125)<br>MIL: ±.0002 (0.005) | DRAWING NO: 108-1163-4<br>REV: 114-2154<br>DATE: 11/14/03 | SEE NOTE 1<br>SEE NOTE 1<br>CUSTOMER DRAWING                 | DRAWING NO: A100779<br>DATE: 11/14/03<br>REV: 2<br>SHEET: 2 OF 2   |